







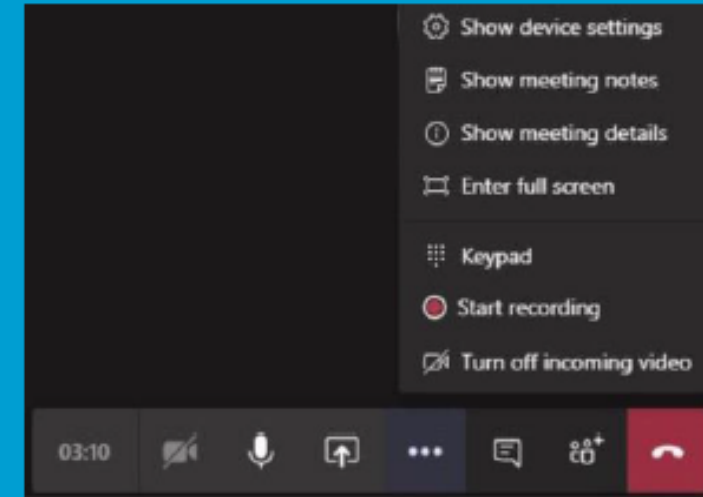
# Microsoft Teams for Meeting Guests

## Workstation



### MEET

-  Camera: Mute/unmute camera
-  Microphone: Mute/unmute microphone
-  Ellipsis: Additional Controls
-  Group Chat: Access & join group chat
-  Participant List: View/mute participants
-  Disconnect: Disconnect from meeting



Meeting Control Taskbar

### TIPS & TRICKS

- ✓ Setup: For best results, download Microsoft Teams application for free. Internet browsers should be on most recent version.
- ✓ Computer: Plug-in power cord to ensure enough charge to last meeting.
- ✓ Network: Connect to a wired network connection for best results.
- ✓ Devices: External mic & speakers OR office phone are recommended.
- ✓ Phone - \*1 lists commands, \*6 unmutes the phone.
- ✓ Etiquette: Mute when not speaking.



Sept 9, 2020

# The San Gabriel Valley Greenway Network Strategic Implementation Plan



# Welcome

- Introductions and Welcoming Remarks
  - Recap of the July Steering Committee meeting
  - The purpose of today's meeting
- Presentation
  - Schedule
  - Questions/comments related to July meeting
  - Update on Channel Information Study
  - Eaton Wash Example
- Next Steps
  - October 14, 2020, 2PM to 5PM



### Plan Development – Efforts & Studies

*Aug 2019 - June 2020*

- Existing Studies & Plan Compilation

### Plan Development - Existing Conditions

*Jan 2020-Feb 2021*

- Database of Projects, As-Builts, and Potential Gaps
- Channel Geometric Characteristics and Design Flows
- County Channels GIS mapping

### Database & GIS Map

*March 2020-Feb 2021*

- GIS Database
- Regulatory Roadmap
- GIS Mapping

### Develop Greenway Network Plan

*April 2020-Fall 2021*

- Tributary Maps
- Project Priority Matrix
- Bike Path Alternatives
- Potential Project List
- Conceptual Designs for Each Watershed
- Guidelines & Standards
- Greenway Network Plan

### Plan Development – Environmental Documents

*Aug 2020 - April 2022*

- Environmental Strategy
- EIR/EIS



### Public Engagement & Community Meetings

*April 2020-Fall 2021*

- Graphic Standards
- Community Engagement Plan
- Community Workshops
- Audience Messaging
- Website



### Steering and Technical Advisory Meeting

*Today-Project Completion*

**San Gabriel Valley  
Greenway Network  
Strategic  
Implementation Plan**

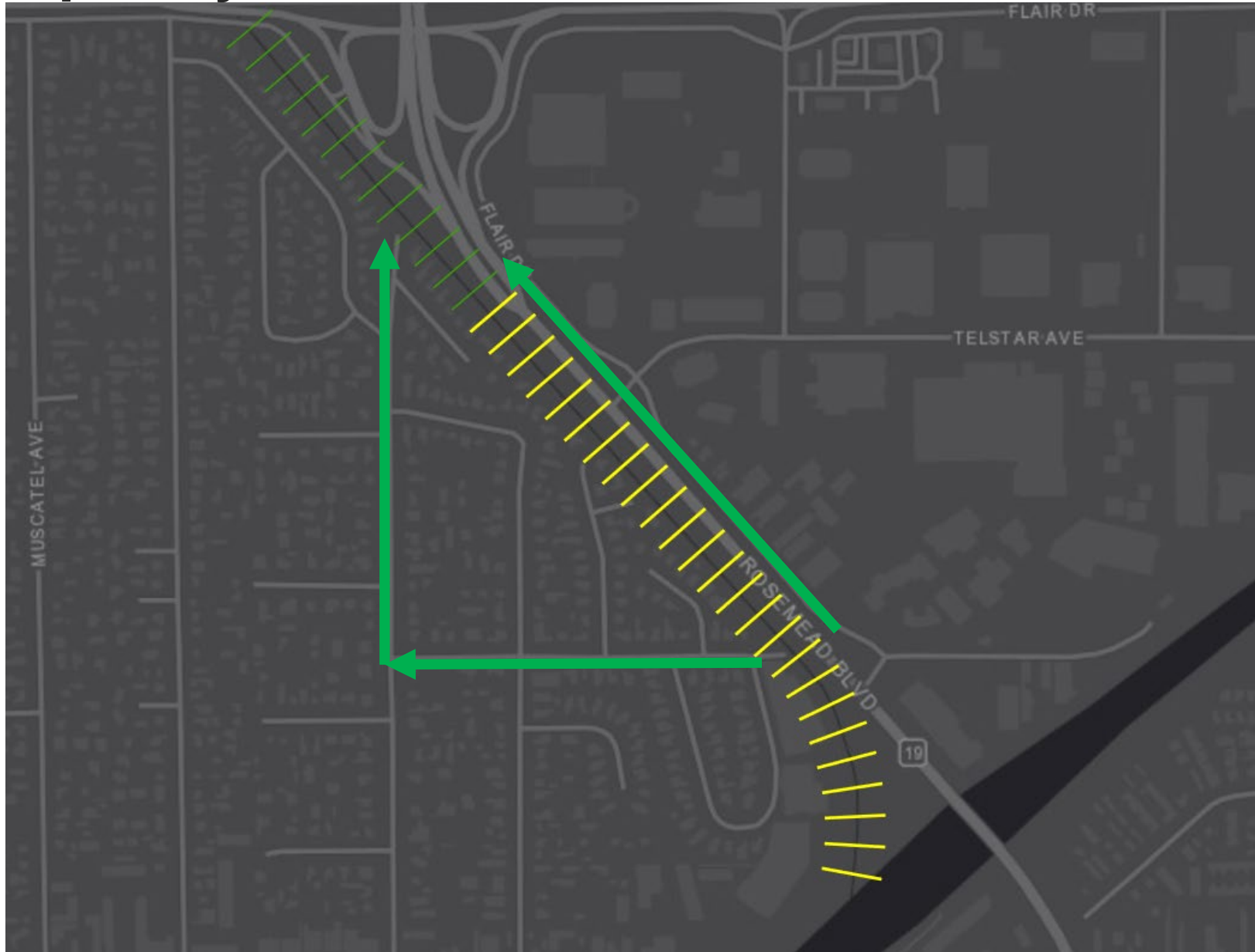


[illegible]

# Channel Capacity Results based on As-built Data

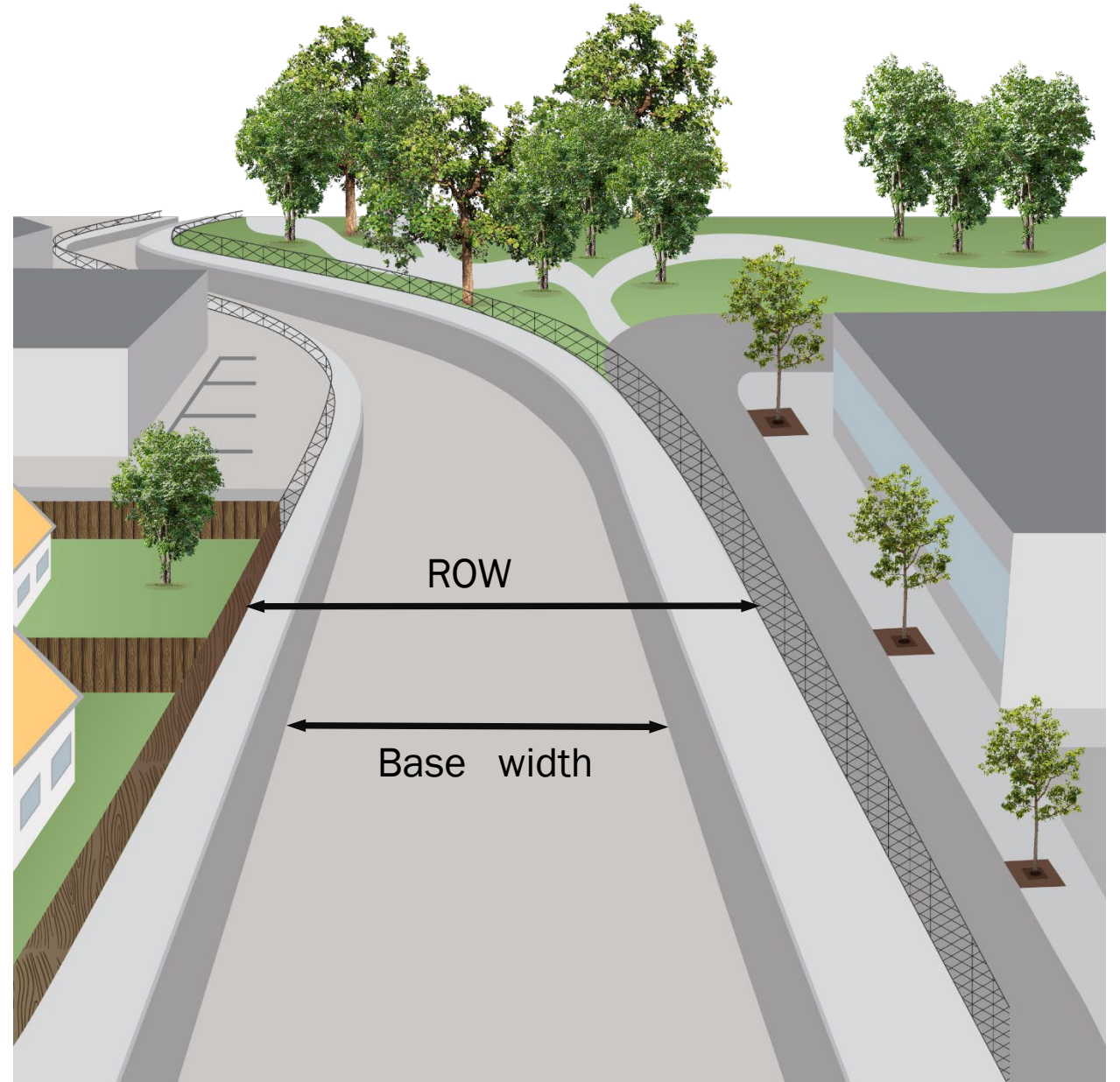
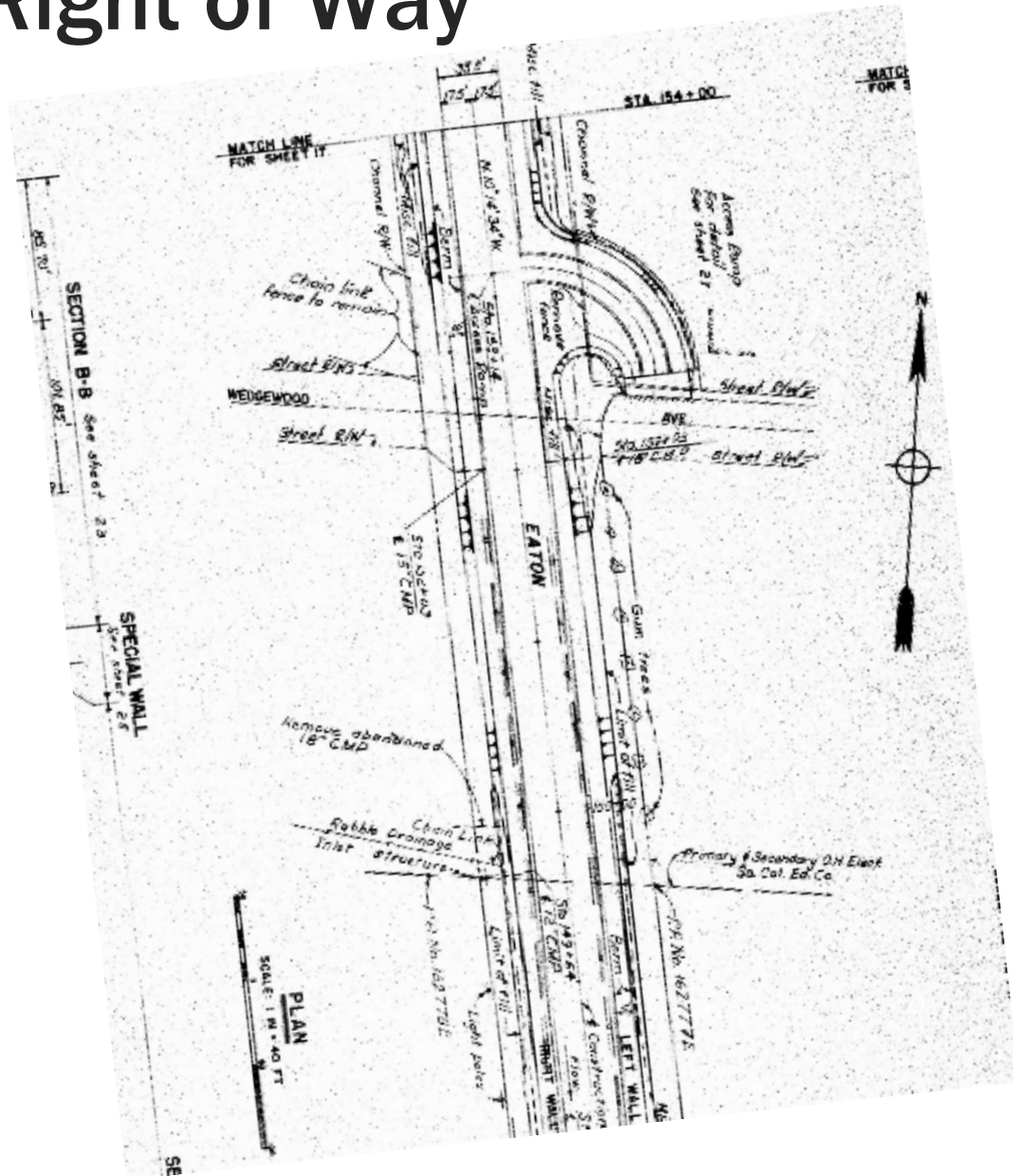


# Channel Capacity Results



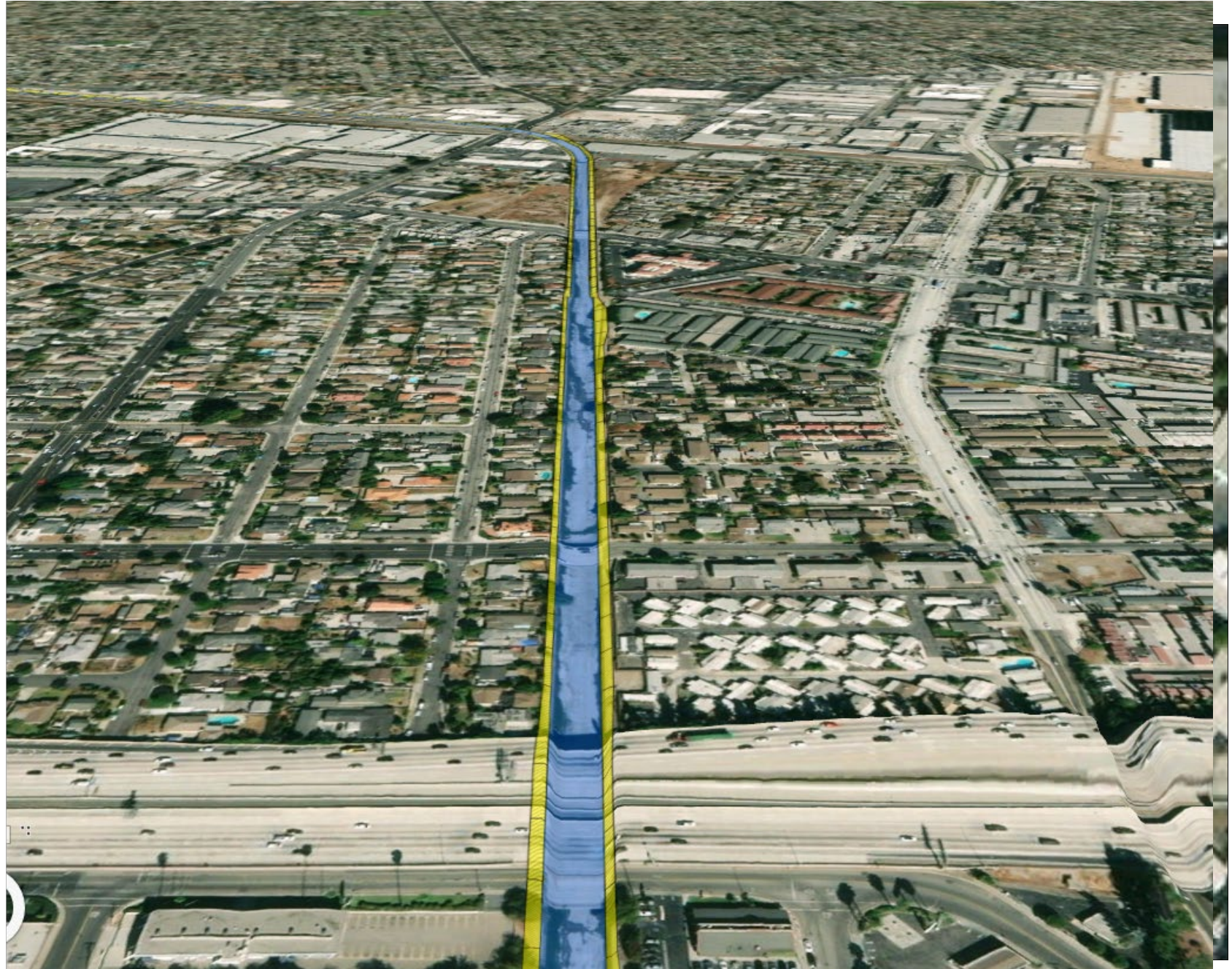


# Right of Way





# Right-of-Way



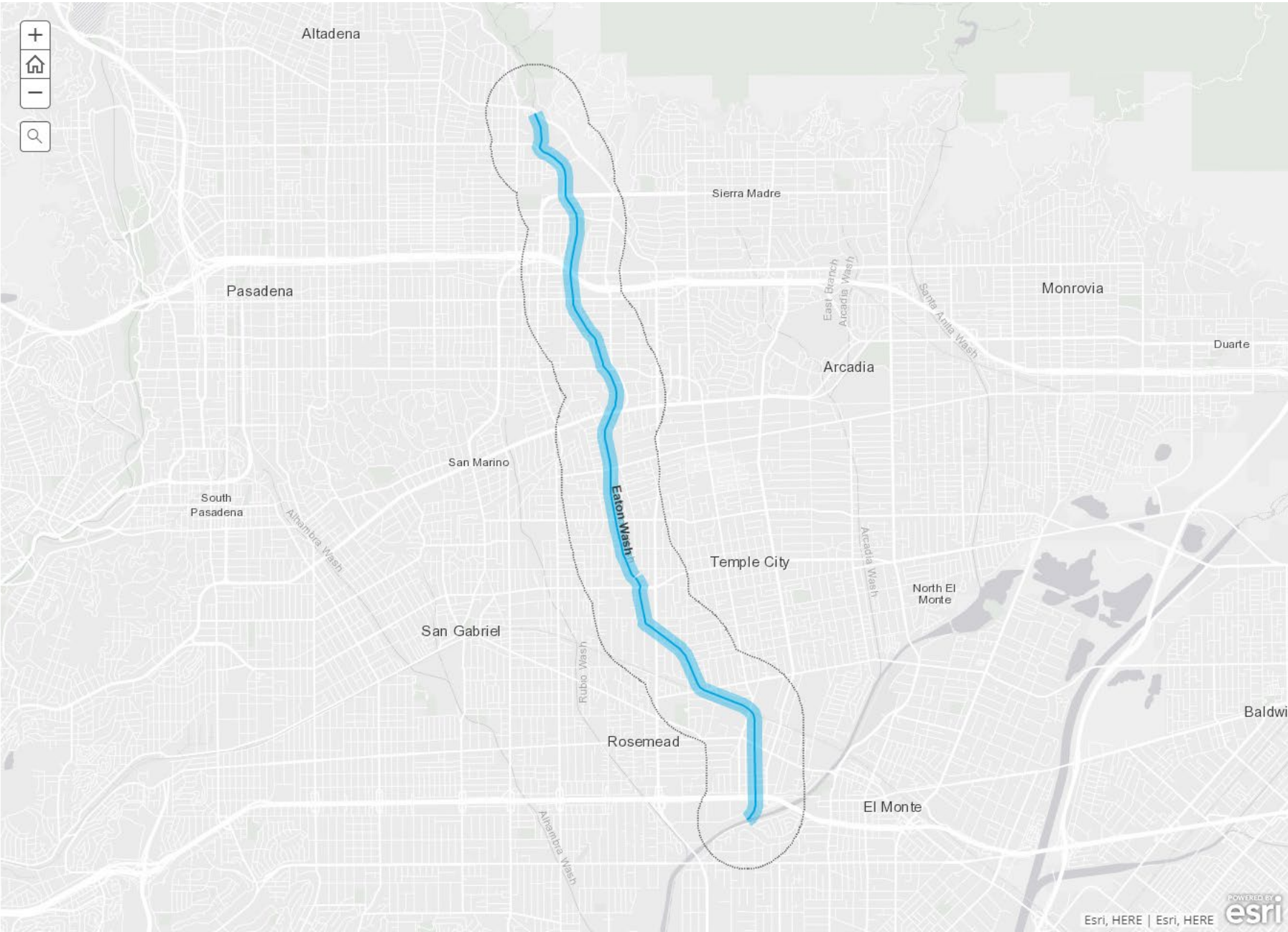
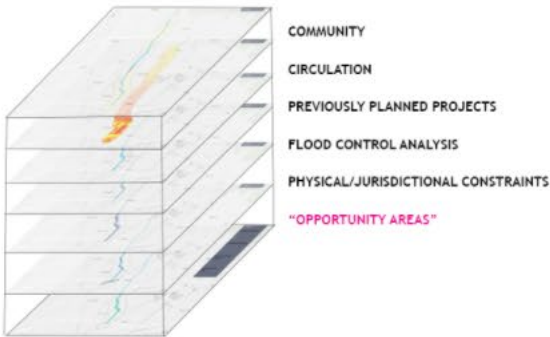


# Eaton Wash

This interactive mapping exercise will demonstrate how opportunity areas will be identified throughout the SGVGSIP process.

Based on committee feedback, opportunity areas will then be ranked and clarified into projects

This map will also be shared with the STAC as a live resource



## Eaton Wash

### Overview

- 8.19 miles
- 7 incorporated cities

### Community

#### Population Density:

- Around **150,000 people** live adjacent to Eaton Wash
- **Finding:** The most dense areas are: **El Monte, San Gabriel, and parts of Pasadena** (Census 2010)

### Community

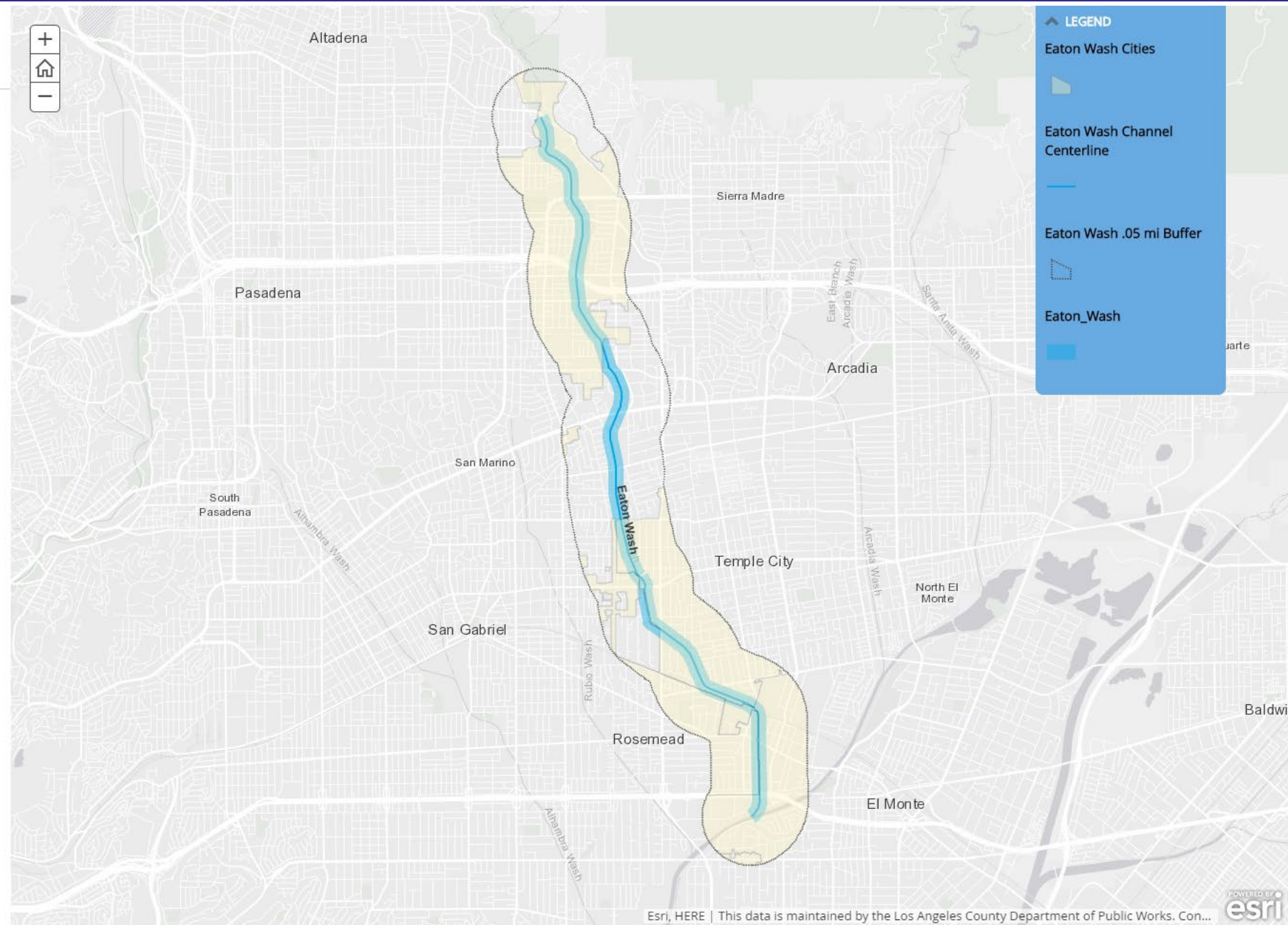
#### Environmental Burden:

- Environmental burden scores ([CalEnviroScreen](#)) vary greatly throughout the corridor
- **Finding:** The most environmentally burdened populations are in the southern portion of the Wash; **Rosemead, El Monte, and San Gabriel**

### Community

#### Park Need:

- Based on demographics and park density, the Department of Parks and Recreation's **Park Needs Assessment** assigns scores to different areas between "Low" (1) and "Very High" (5)
- **Finding:** According to the study; the areas with





## Eaton Wash

### Community

#### Population Density:

- Around **150,000 people** live adjacent to Eaton Wash
- **Finding:** The most dense areas are: **El Monte, San Gabriel, and parts of Pasadena** (Census 2010)

### Community

#### Environmental Burden:

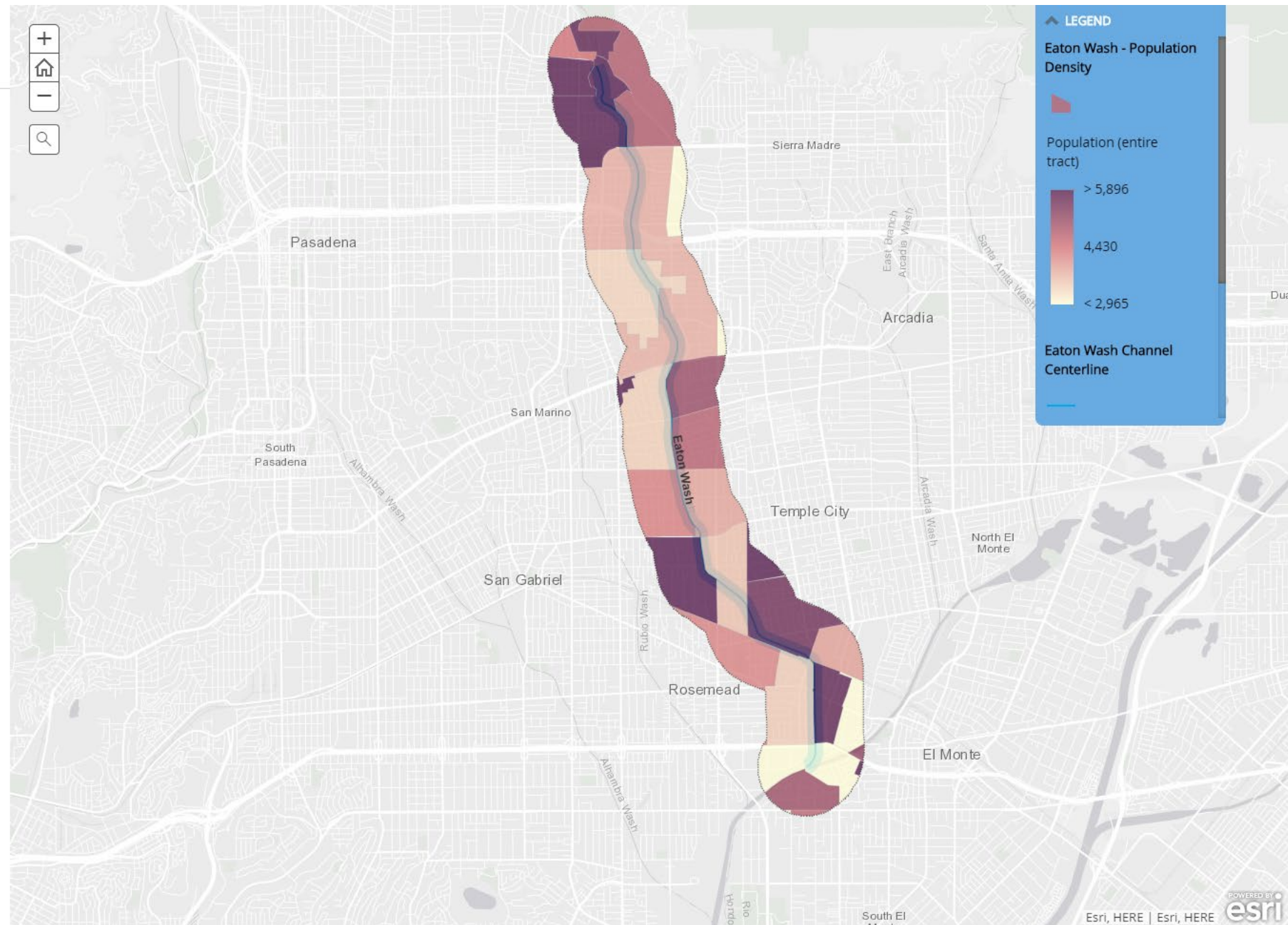
- Environmental burden scores ([CalEnviroScreen](#)) vary greatly throughout the corridor
- **Finding:** The most environmentally burdened populations are in the southern portion of the Wash; **Rosemead, El Monte, and San Gabriel**

### Community

#### Park Need:

- Based on demographics and park density, the Department of Parks and Recreation's [Park Needs Assessment](#) assigns scores to different areas between "Low" (1) and "Very High" (5)
- **Finding:** According to the study; the areas with greatest park need are in the southern communities along Eaton Wash; **Temple City, El Monte, and parts of East San Gabriel**

### Circulation



## Eaton Wash

### Community

#### Environmental Burden:

- Environmental burden scores (**CalEnviroScreen**) vary greatly throughout the corridor
- **Finding:** The most environmentally burdened populations are in the southern portion of the Wash; **Rosemead, El Monte, and San Gabriel**

### Community

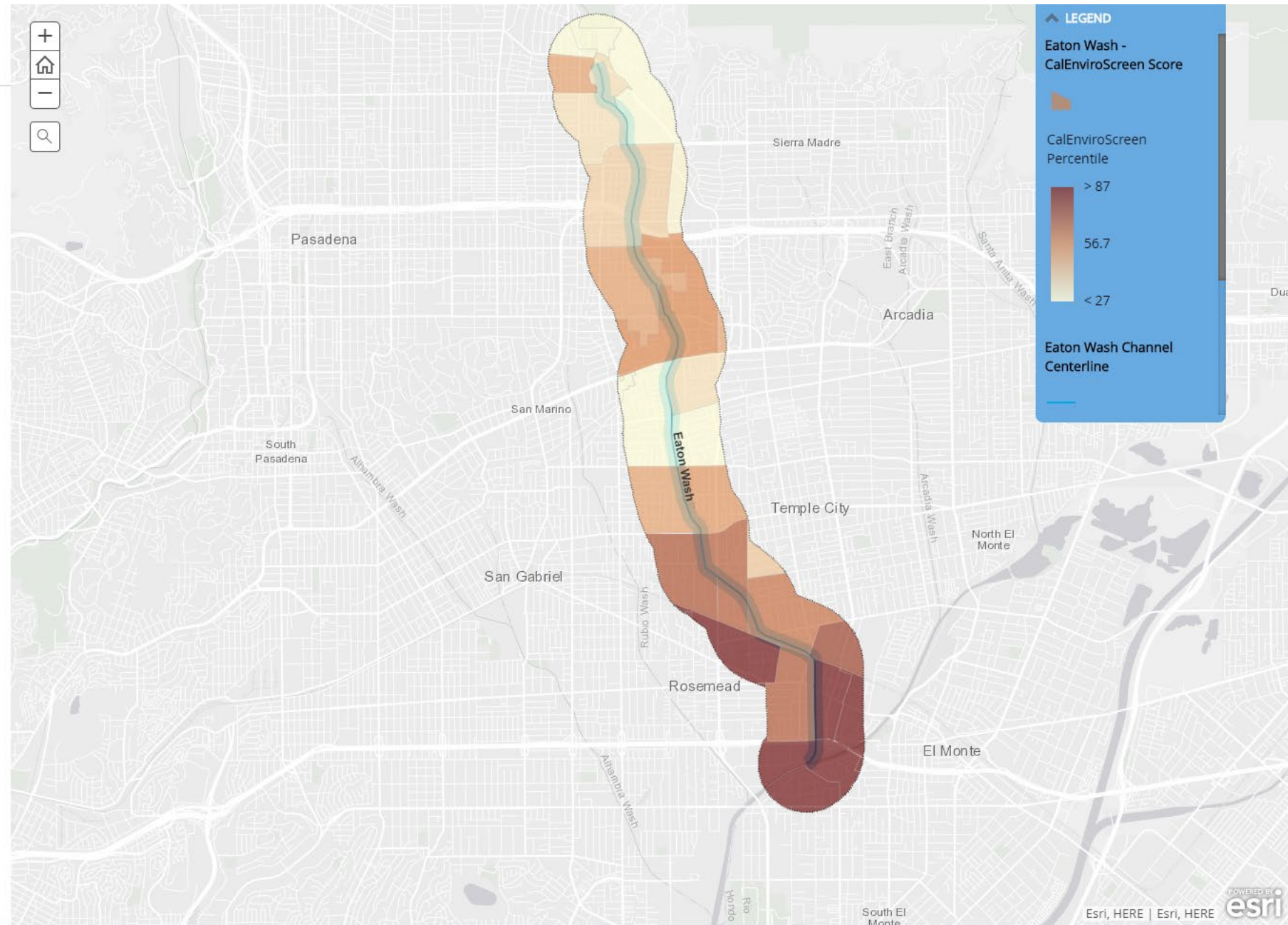
#### Park Need:

- Based on demographics and park density, the Department of Parks and Recreation's **Park Needs Assessment** assigns scores to different areas between "Low" (1) and "Very High" (5)
- **Finding:** According to the study; the areas with greatest park need are in the southern communities along Eaton Wash; **Temple City, El Monte, and parts of East San Gabriel**

### Circulation

#### Activity Generators:

- Data compiled from County Records and Open Street map data
- **Finding:** Eaton Wash is Adjacent to **11 Schools**
- There are **Industrial, Commercial, and Retail** land use areas throughout the corridor
- **Finding:** There are **fewer** activity generators between **Muscatel Ave. and Colorado Blvd**





## Eaton Wash

### Community

#### Park Need:

- Based on demographics and park density, the Department of Parks and Recreation's **Park Needs Assessment** assigns scores to different areas between "Low" (1) and "Very High" (5)
- Finding:** According to the study; the areas with greatest park need are in the southern communities along Eaton Wash; **Temple City, El Monte, and parts of East San Gabriel**

### Circulation

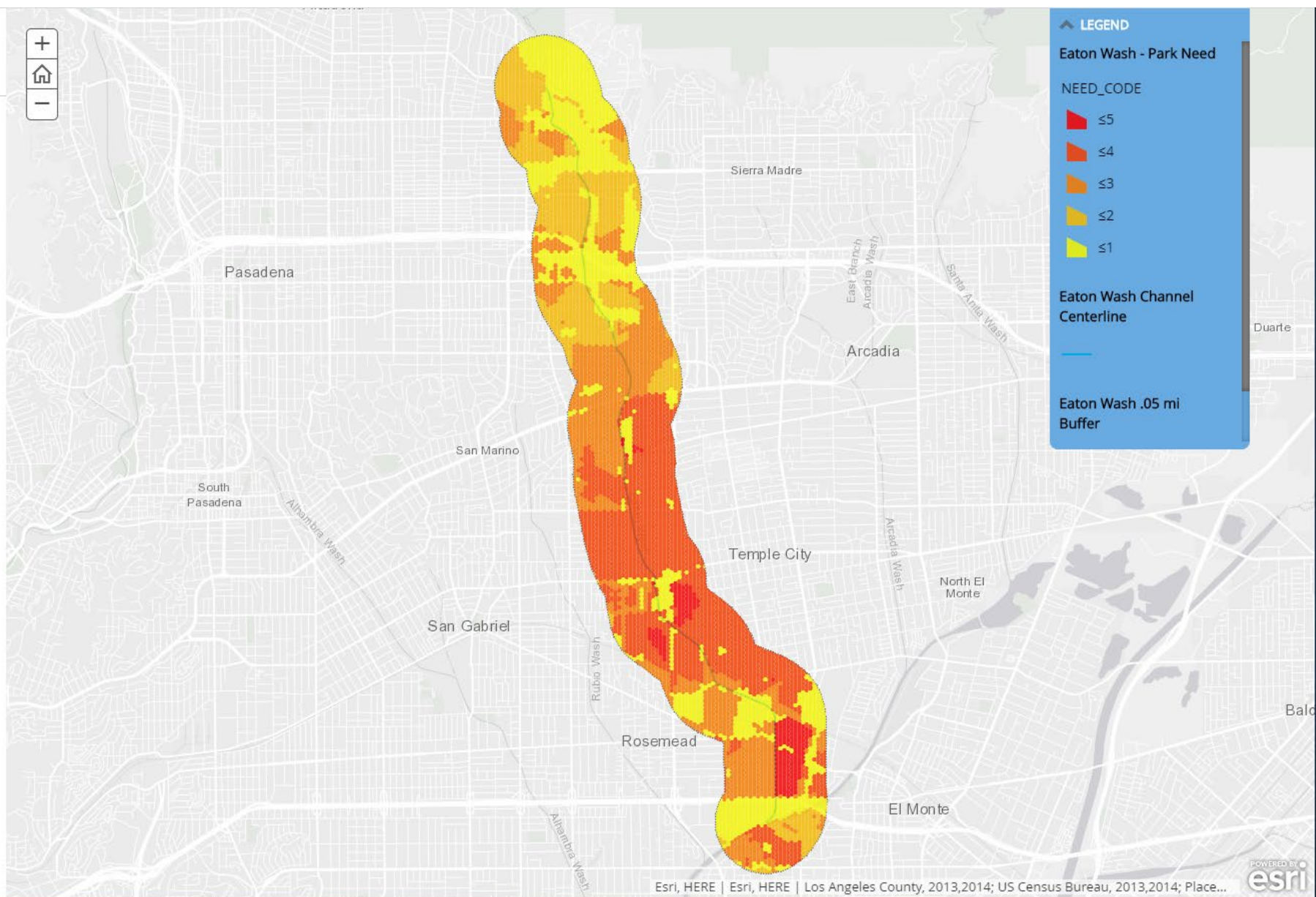
#### Activity Generators:

- Data compiled from County Records and Open Street map data
- Finding:** Eaton Wash is Adjacent to **11 Schools**
- There are **Industrial, Commercial, and Retail** land use areas throughout the corridor
- Finding:** There are **fewer** activity generators **between Muscatel Ave, and Colorado Blvd**
- Finding:** There are a number of small parks throughout the corridor

### Circulation

#### Bikeway Connectivity:

Existing Bikeway Data compiled by the Metro



## Eaton Wash

### Circulation

#### Activity Generators:

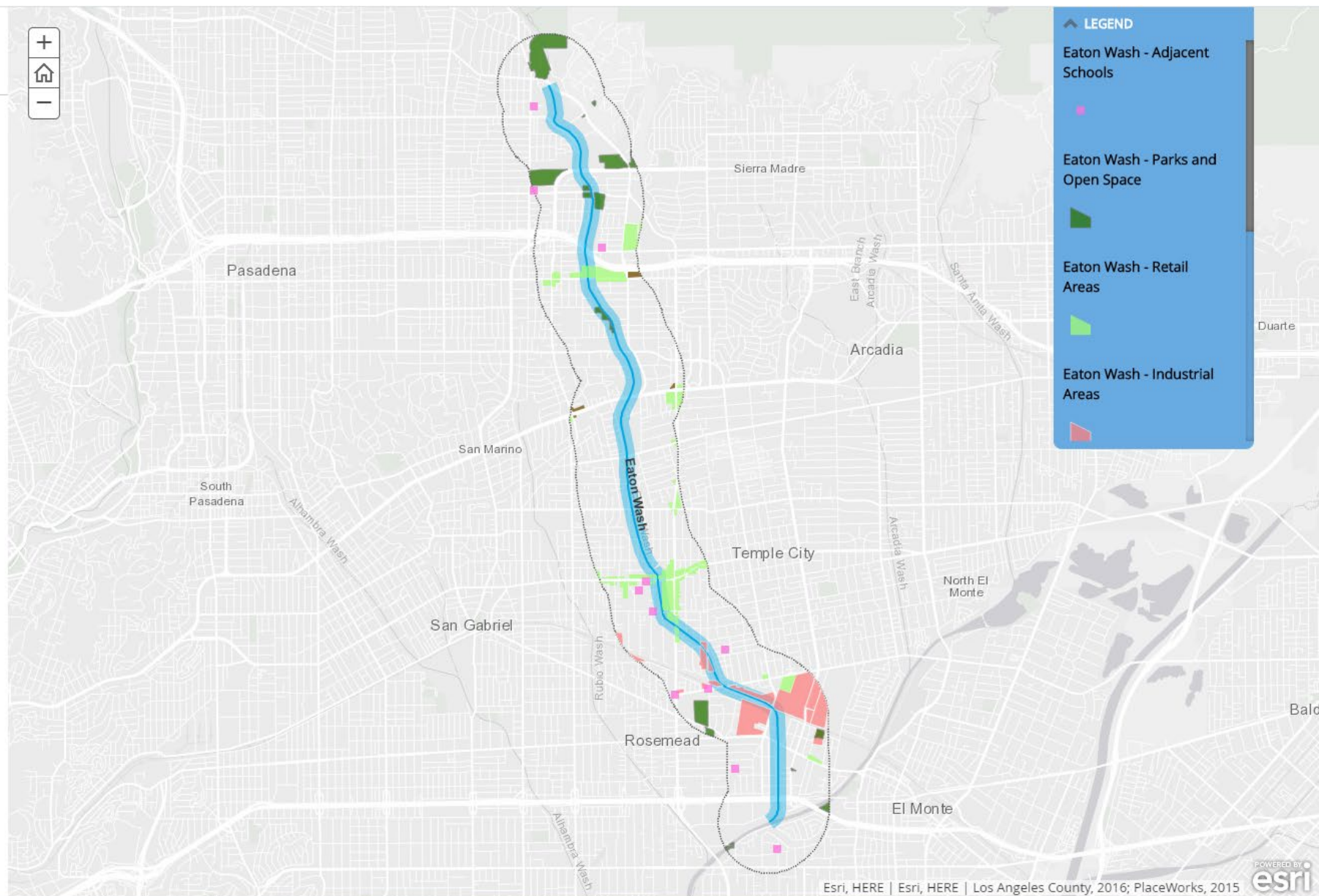
- Data compiled from County Records and Open Street map data
- **Finding:** Eaton Wash is Adjacent to **11 Schools**
- There are **Industrial, Commercial, and Retail** land use areas throughout the corridor
- **Finding:** There are **fewer** activity generators **between Muscatel Ave, and Colorado Blvd**
- **Finding:** There are a number of small parks throughout the corridor

### Circulation

#### Bikeway Connectivity:

- Existing Bikeways Data compiled by the [Metro Active Transportation Strategic Plan](#) data
- Existing Trail data from County DPR
- **Finding:** There are **major gaps** in the area's bikeway network
- **Finding:** There is also a lack of **trails** in the area, the nearest being **Santa Anita Wash**.
- **Finding:** Pasadena is the most well connected with bikeways

### Circulation





## Eaton Wash

### Circulation

#### Bikeway Connectivity:

- Existing Bikeways Data compiled by the **Metro Active Transportation Strategic Plan** data
- Existing Trail data from County DPR
- Finding:** There are **major gaps** in the area's bikeway network
- Finding:** There is also a lack of **trails** in the area, the nearest being **Santa Anita Wash**.
- Finding:** Pasadena is the most well connected with bikeways

### Circulation

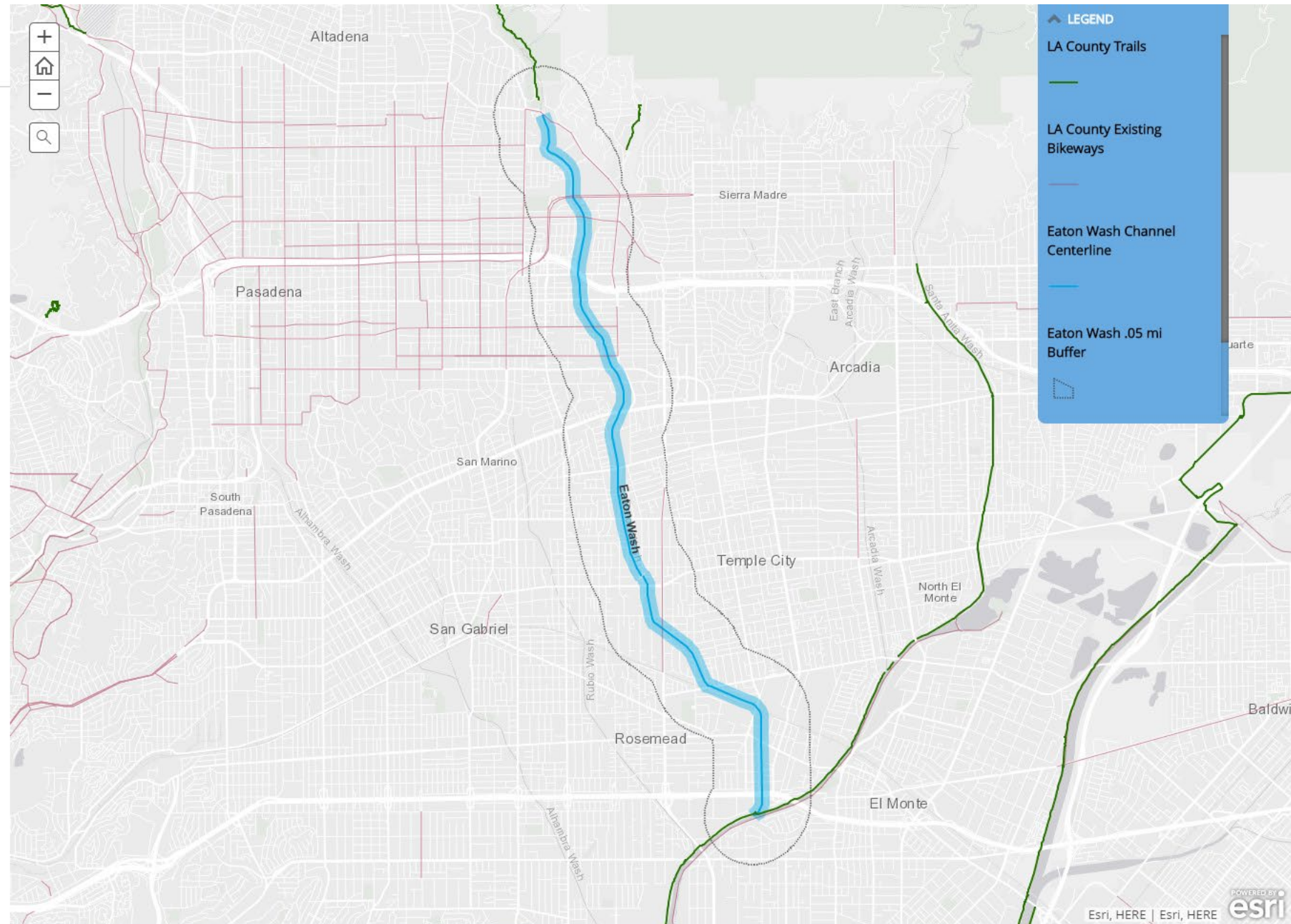
#### Intersections:

- Data coded from Street Center lines data and Open Street Maps
- Finding:** Eaton Wash crosses underneath a roadway **27 times**
- Finding:** Conditions at each intersection vary, click the pop-up link for **street-views**

### Previously Planned Projects

#### Previous Planning Efforts:

- Eaton Wash area project compiled through the Existing Efforts and Studies Technical Memo
- Finding:** Eaton Wash was identified for Greenway development within multiple documents:
  - The **LA County Bicycle Master Plan 2012** identified the wash for a Greenway (minus the





## Eaton Wash

### Circulation

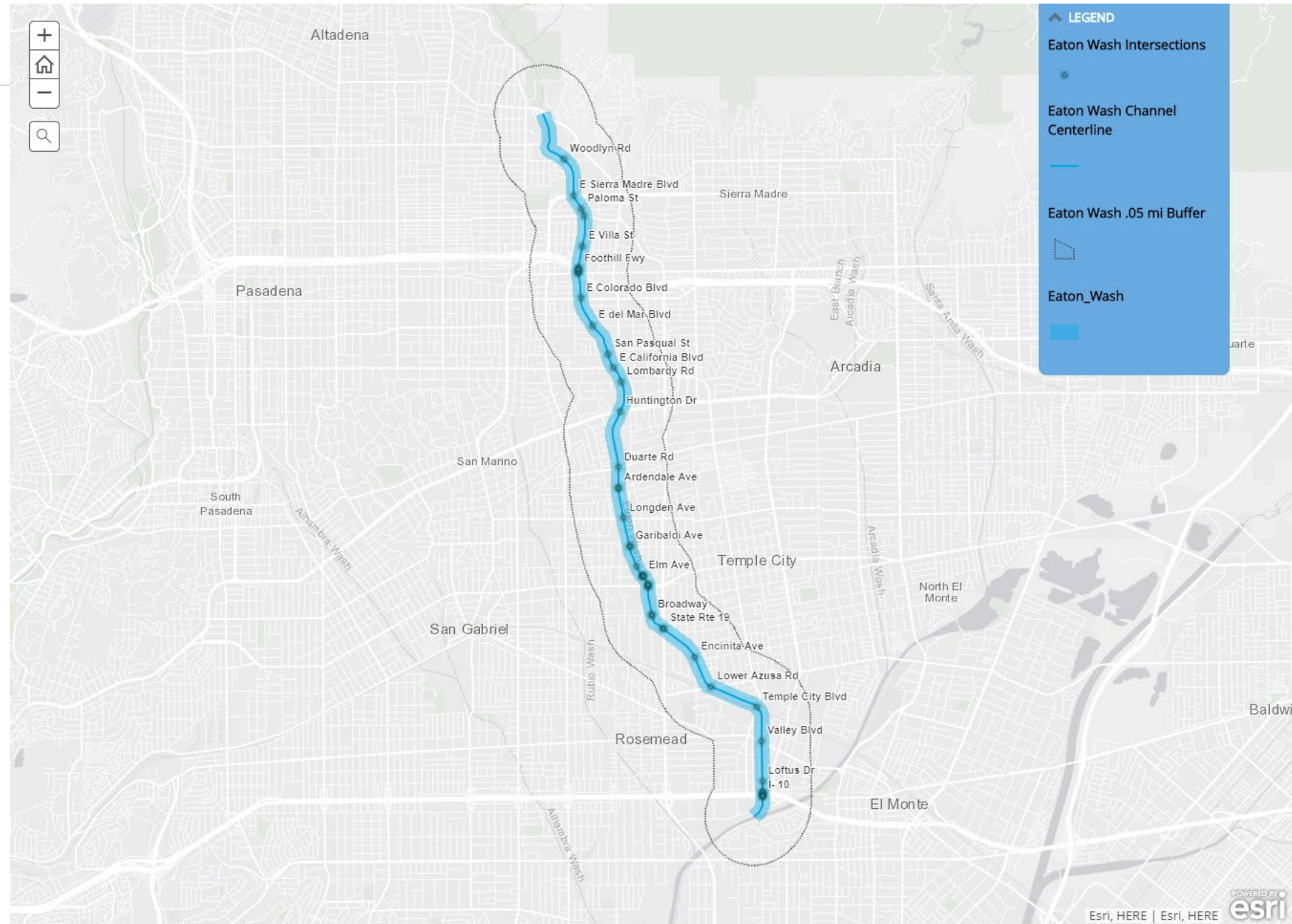
#### Intersections:

- Data coded from Street Center lines data and Open Street Maps
- **Finding:** Eaton Wash crosses underneath a roadway **27 times**
- **Finding:** Conditions at each intersection vary, click the pop-up link for **street-views**

### Previously Planned Projects

#### Previous Planning Efforts:

- Eaton Wash area project compiled through the Existing Efforts and Studies Technical Memo
- **Finding:** Eaton Wash was identified for Greenway development within multiple documents:
  - The **LA County Bicycle Master Plan 2012** identified the wash for a Greenway (minus the segment between Del Mar Blvd and Foothill Blvd)
  - The **SGVCOG Greenways Study 2018** ranked Eaton Wash among its "top 50 miles"
  - A Greenway along the southern portion of Eaton Wash has been **funded between Elm Ave and the Rio Hondo, starting with Phase 1 between Rosemead Ave and Longden Ave.**
  - Additionally, "constructing a park in the vicinity of Eaton Wash" was identified by the community as a high priority project during the Parks Needs Assessment outreach



## Eaton Wash

### Previously Planned Projects

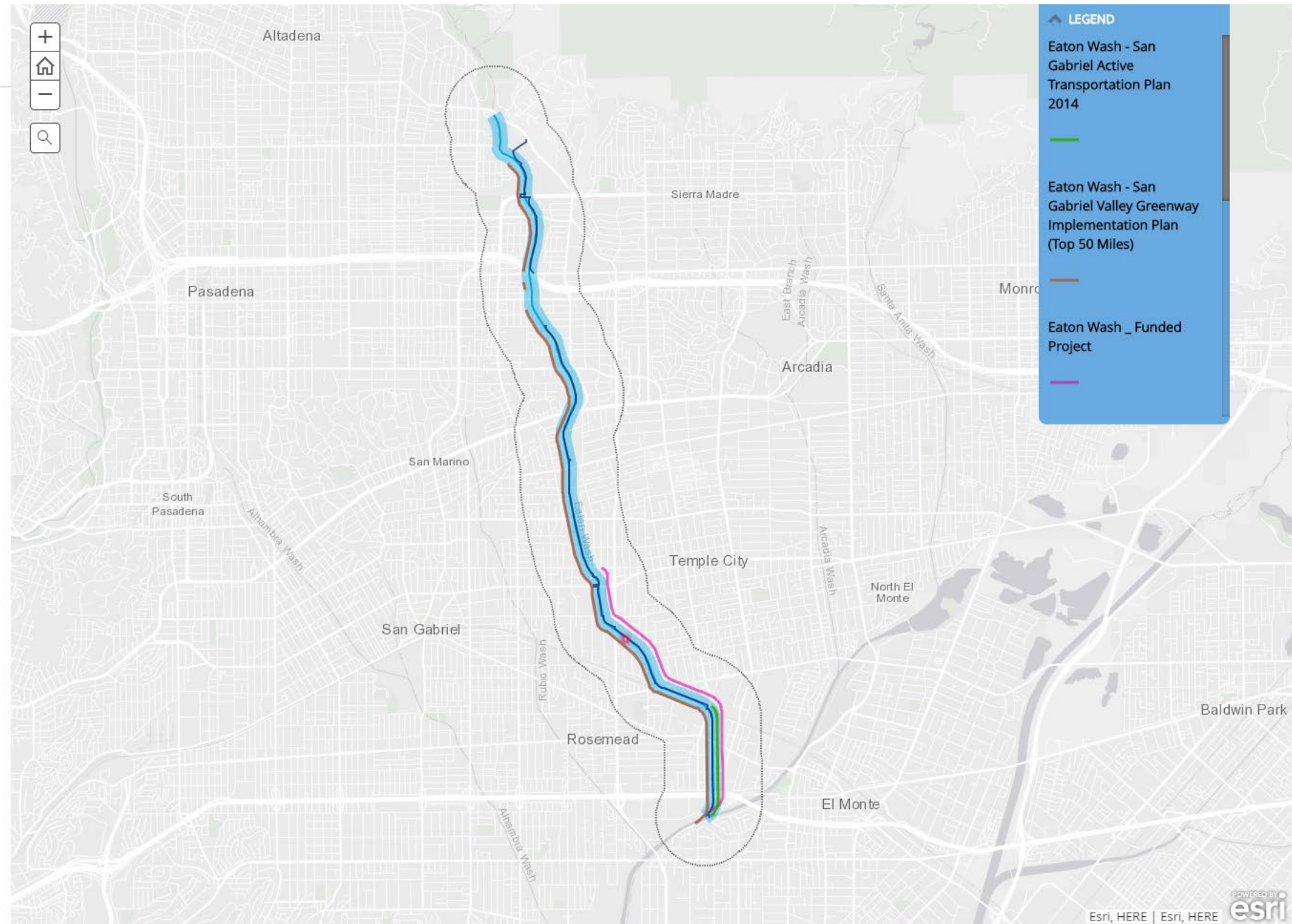
#### Previous Planning Efforts:

- Eaton Wash area project compiled through the Existing Efforts and Studies Technical Memo
- Finding:** Eaton Wash was identified for Greenway development within multiple documents:
  - The **LA County Bicycle Master Plan 2012** identified the wash for a Greenway (minus the segment between Del Mar Blvd and Foothill Blvd)
  - The **SGVCOG Greenways Study 2018** ranked Eaton Wash among its "top 50 miles"
  - A Greenway along the southern portion of Eaton Wash has been **funded between Elm Ave and the Rio Hondo, starting with Phase 1 between Rosemead Ave and Longden Ave.**
  - Additionally, "constructing a park in the vicinity of Eaton Wash" was identified by the community as a high priority project during the Parks Needs Assessment outreach

### Flood Control

#### Flood Capacity:

- Eaton Wash has been evaluated based on as-built data for **flood capacity**
- Finding:** Areas that warrant further analysis are mostly concentrated along the **southern** portion of the wash
  - Upon further analysis**, some areas *may* need to be widened in the future which would affect Greenway development





Eaton Wash

Flood Control

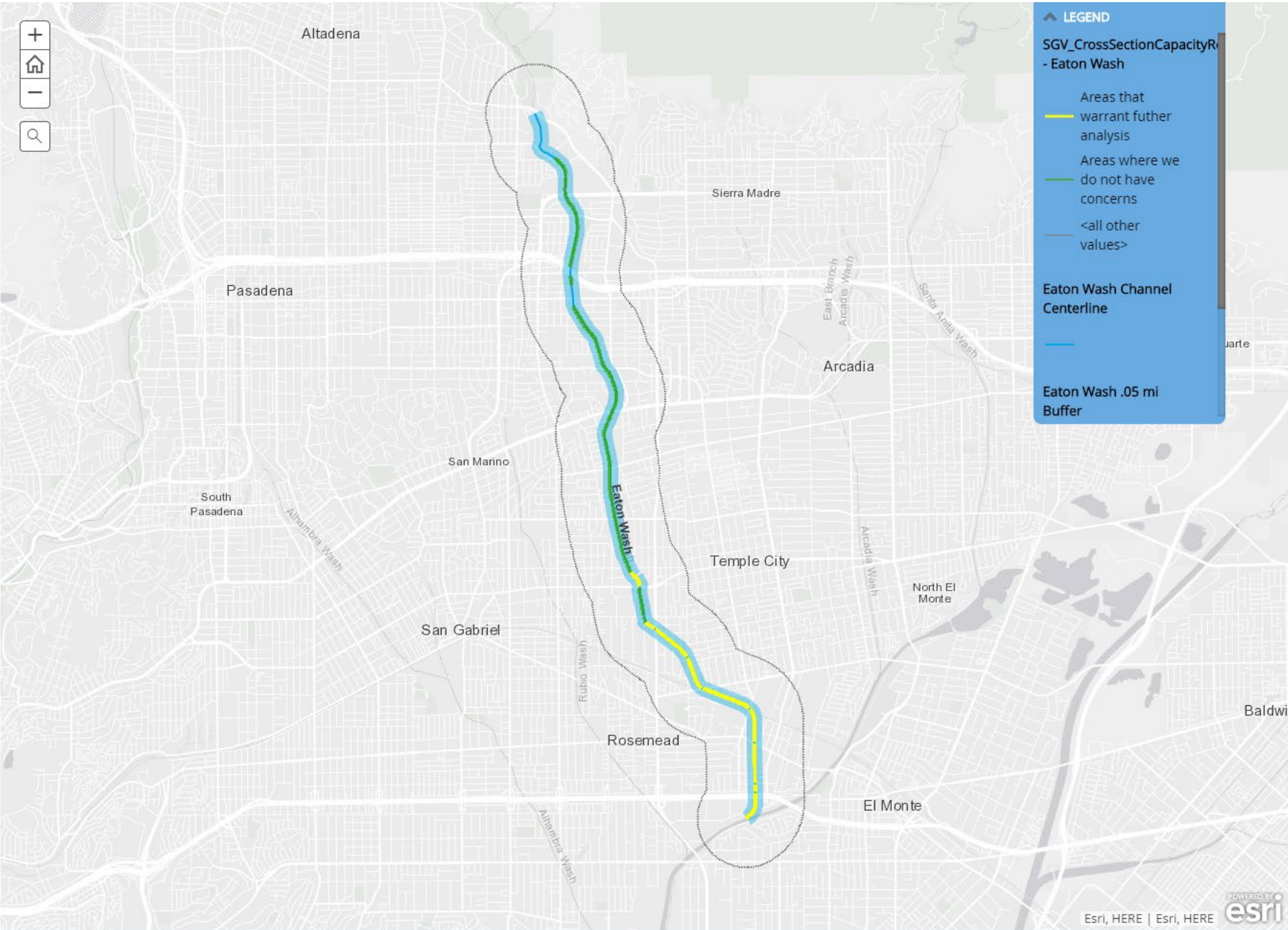
- Flood Capacity:
- Eaton Wash has been evaluated based on as-built data for **flood capacity**
  - Finding:** Areas that may warrant further analysis are mostly concentrated along the **southern** portion of the wash

Constraints and Opportunities

- Right-of-way Ownership:
- LACFD controls ROW through various agreements
  - Finding:** Eaton Canyon parcels are mostly fee property, with a few marginal quitclaims and 3+ easements along the channel
  - "Fee" parcels would require the least amount of regulatory approvals

Constraints and Opportunities

- Eaton Wash has been evaluated for ROW outside of the channel
- Finding:** Generally, Eaton Wash has over 10 feet of ROW available outside of the flood control channel
  - Finding:** Areas with 10 feet of available ROW are mostly concentrated between Acacia St and Encinita Ave



## Eaton Wash

### Constraints and Opportunities

#### Right-of-way Ownership:

- LACFD controls ROW through various agreements
- **Finding:** Eaton Canyon parcels are mostly fee property, with a few marginal quitclaims and 3+ easements along the channel
- "Fee" parcels would require the least amount of regulatory approvals

### Constraints and Opportunities

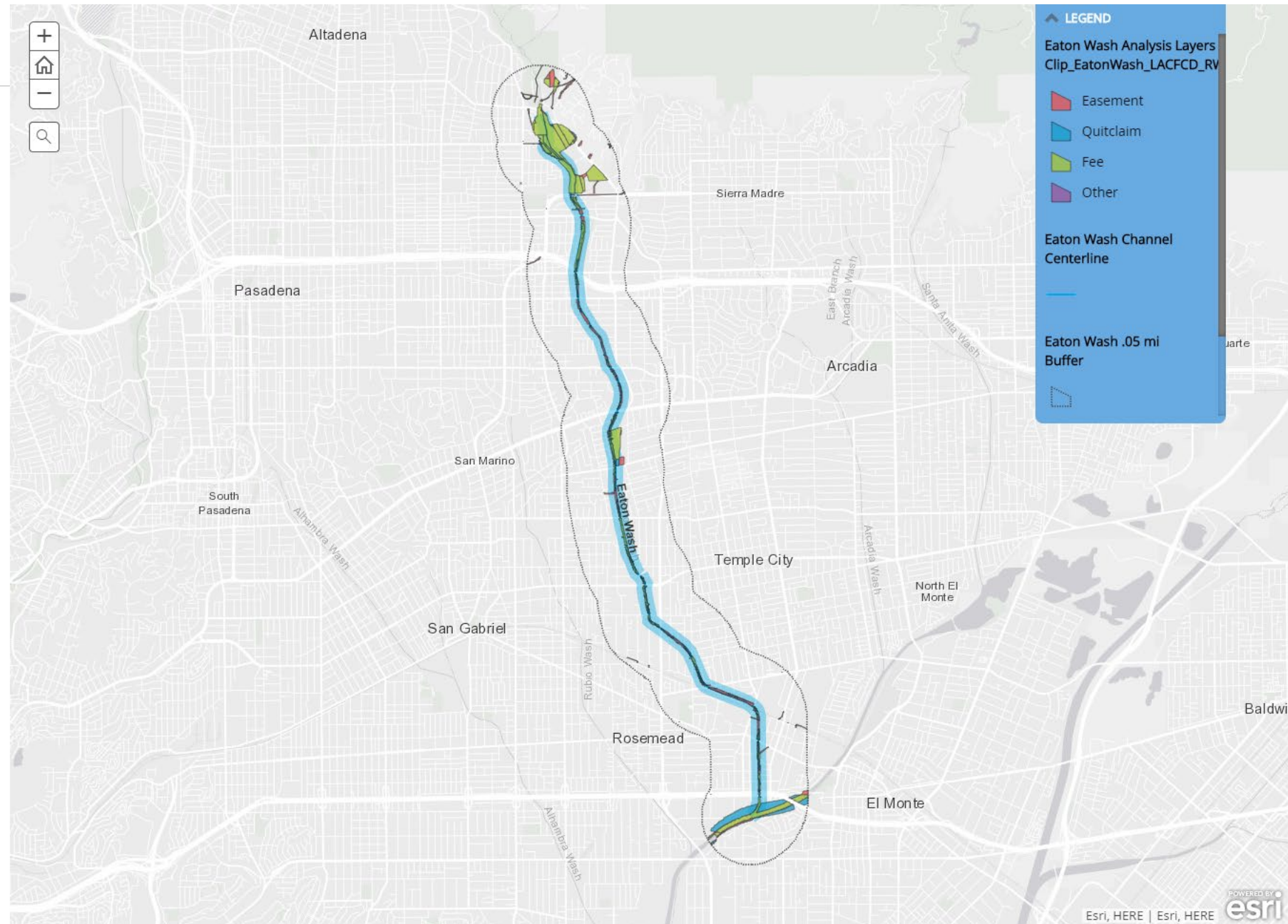
Eaton Wash has been evaluated for ROW outside of the channel

- **Finding:** Generally, Eaton Wash has over 10 feet of ROW available outside of the flood control channel
- **Finding:** Areas with 10 feet of available ROW are mostly concentrated between Acacia St and Encinita Ave

### Constraints and Opportunities

#### Vacant Parcels

- Vacant parcels represent potential opportunities for redevelopment
- Data referenced is from the County Assessors Office
- **Finding:** While there are many vacant areas adjacent to Eaton Wash, very few are owned by a





No issues detected x

Story not shared x

**LEGEND**

- Eaton Wash - Right of Way
  - ROW > 10ft
  - ROW < 10ft
- Eaton Wash - Available ROW dimensions
- Eaton Wash Channel Centerline
- Eaton Wash .05 mi Buffer

The map shows the Eaton Wash channel centerline (blue line) and its .05 mi buffer (light blue area). The Right of Way (ROW) is indicated by green lines for areas greater than 10ft and red lines for areas less than 10ft. The wash flows from the north (top) towards the south (bottom) through the cities of Altadena, Pasadena, San Marino, Temple City, San Gabriel, Rosemead, and El Monte. Other nearby features include the Alhambra Wash, Ruben Wash, and the San Gabriel River.

## Eaton Wash

No issues detected

Story not shared

vacant parcels are mostly concentrated between Acacia St and Encinita Ave

## Constraints and Opportunities

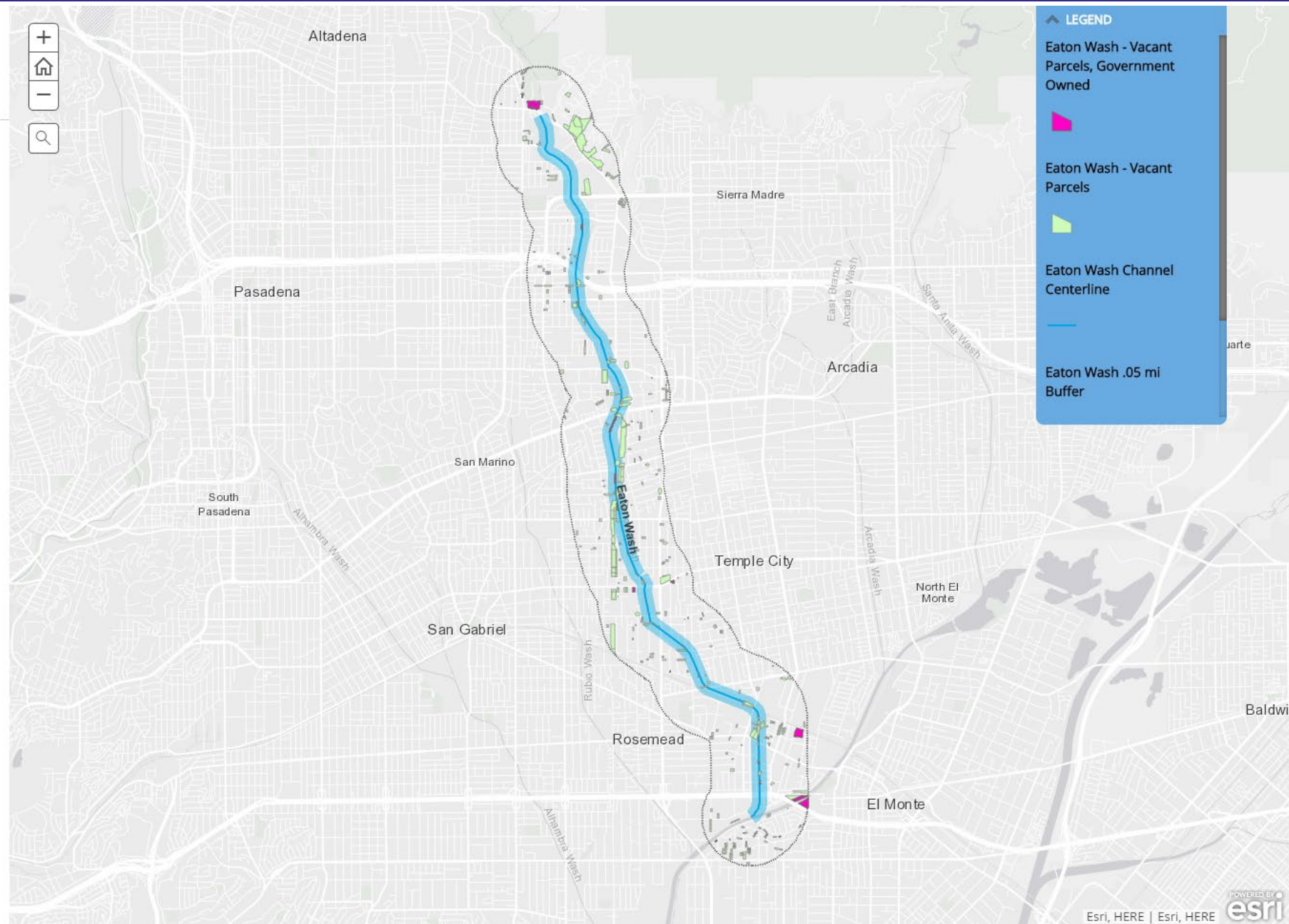
## Vacant Parcels

- Vacant parcels represent potential opportunities for redevelopment
- Data referenced is from the County Assessors Office
- **Finding:** While there are many vacant areas adjacent to Eaton Wash, very few are owned by a government agency

## Main Takeaways

## Potential Project Opportunities:

- Eaton Wash has potential for Greenway development which has been proposed by a number of other studies
- A Greenway is funded and being developed along the south end of Eaton Wash
  - The SGVGSIP could potentially focus on the area north of what is being currently being developed, or seek to inform the planning and design of what is currently underway
  - The Greenway currently in development is in the areas of greatest 'need' as well as some areas that need further flood capacity analysis





## Eaton Wash

### Constraints and Opportunities

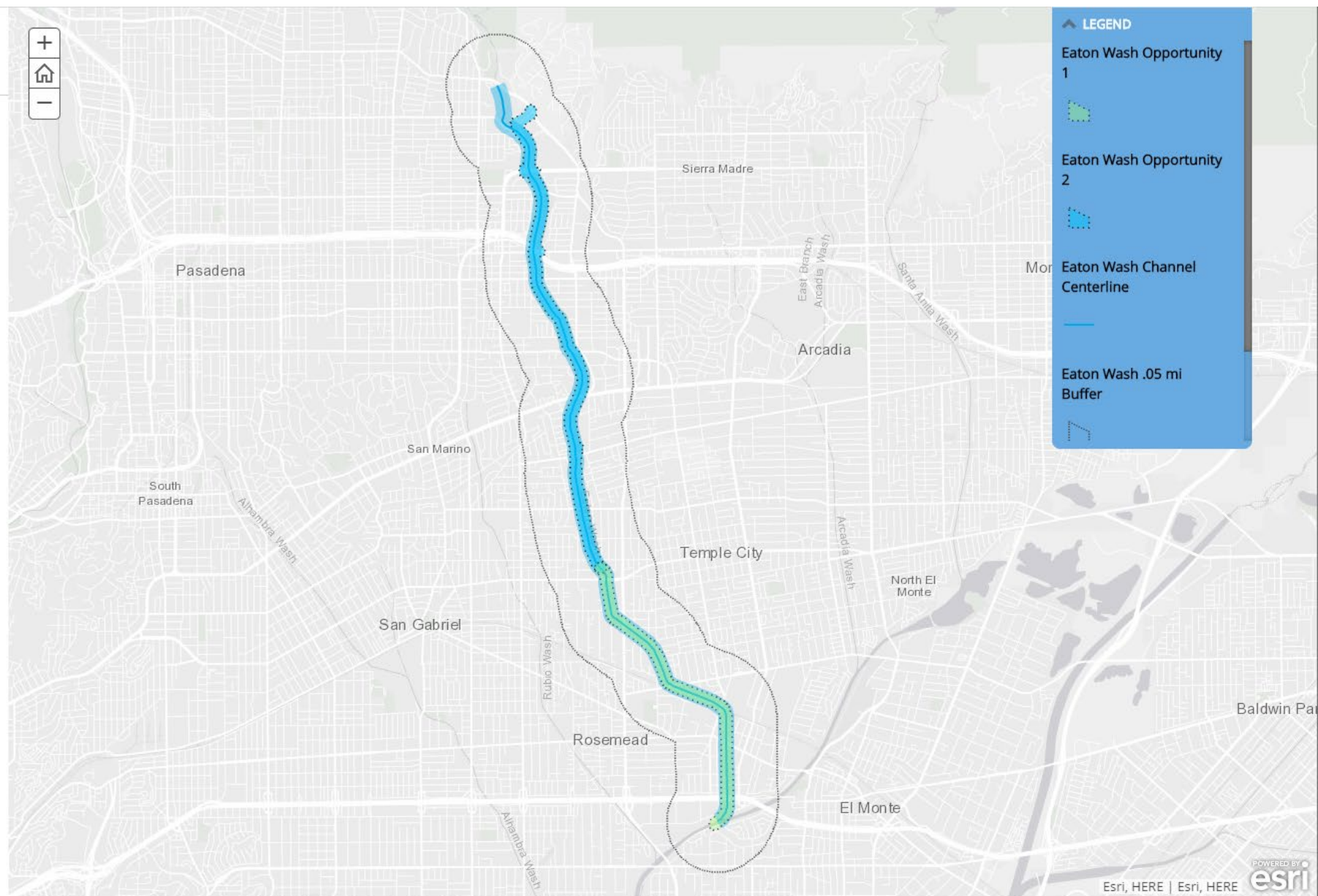
#### Vacant Parcels

- Vacant parcels represent potential opportunities for redevelopment
- Data referenced is from the County Assessors Office
- **Finding:** While there are many vacant areas adjacent to Eaton Wash, very few are owned by a government agency

### Main Takeaways

#### Potential Project Opportunities:

- Eaton Wash has potential for Greenway development which has been proposed by a number of other studies
- A Greenway is funded and being developed along the south end of Eaton Wash
  - The SGVGSIP could potentially focus on the area north of what is being currently being developed, or seek to inform the planning and design of what is currently underway
  - The Greenway currently in development is in the areas of greatest 'need' as well as some areas that need further flood capacity analysis



# Polling Instructions

- Step 1: Click on the link provided in the comments section  
<https://pollev.com/jessescolavi458>
- Step 2: Type in your name or organization when prompted (Do Not Skip)
- Step 3: Wait for polling to begin!

Scan to poll from  
your phone →



**Welcome to jessescolavi458's presentation!**

**Introduce yourself**  
Enter the screen name you would like to appear alongside your responses.

Continue

Skip

- Polling will be a series of ranking (drag and drop) and multiple-choice questions

# What factors are most important to best address COMMUNITY NEED?

Population Density

Environmental Burden

Economic Disadvantage

Park Need

Other (please provide  
context during discussion)



# How do we best connect the Greenway?

Connecting to existing bikeway and multi-use trail networks

Connecting activity generators such as commercial areas and parks

Fewer street crossings per mile

Other (please provide context during discussion)

# Where should this plan expend energies in relation to **PREVIOUSLY PLANNED PROJECTS?**

Align with and enhance  
existing and planned projects

Develop projects in areas not  
included in other plans

Both are equally important

**Our VACANT PARCEL analysis looks at vacant and government owned parcels in the adjacent area that may be available for park or open space development.**

**Opportunities to develop parks and open space adjacent to a Greenways are:**

Very Important (should contribute greatly to the overall priority score)

Somewhat Important (should contribute somewhat to the overall priority score)

Not Important (should not contribute to the overall priority score)

# Discussion



# Next Steps

Next October 14, 2020 Steering Committee Meeting  
Discussion of technical work:

- Constraints analysis/prioritization results
- Public engagement
- Engaging technical advisors

Meeting summary to be sent out after the meeting

- Comments due on October 2nd





Thank you. **Questions?**

		Eaton Wash OA1	Eaton Wash OA2
COMMUNITY	A. Population Density	0-5	0-5
	B. Environmental Burden	0-10	0-10
	C. Park Need	0-10	0-10
	D. Vacant Land	0-5	0-5
	E. Activity Generators	0-5	0-5
CIRCULATION	F. Trail Connectivity	0-5	0-5
	G. Existing Bikeway Connectivity	0-5	0-5
	H. Intersection Density	0-5	0-5
ENVIRONMENT	I. Tree Cover Need	0-5	0-5
	J. Significant Ecological Area*	0-5	0-5
	K. Previously Planned Projects	0-10	0-10
	L. Channel Capacity	0-15	0-15
	M. ROW Ownership	0-5	0-5
	N. ROW Availability	0-20	0-20
	<b>TOTAL SCORE</b>	<b>0-110</b>	<b>0-110</b>

\* within 0.5 miles of the tributary