







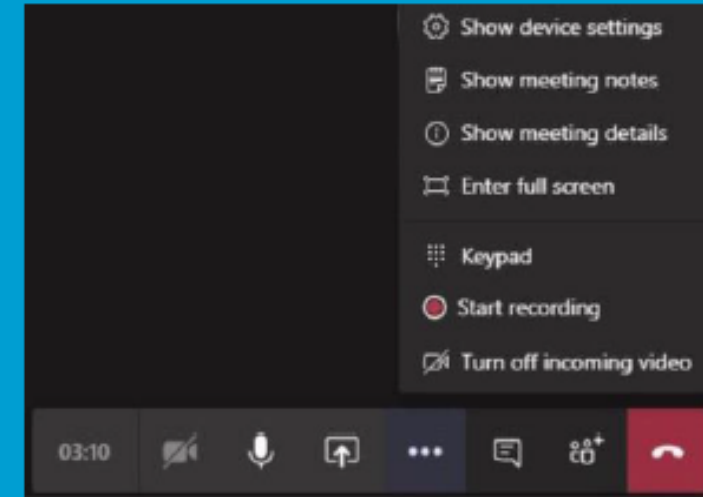
# Microsoft Teams for Meeting Guests

## Workstation



### MEET

-  Camera: Mute/unmute camera
-  Microphone: Mute/unmute microphone
-  Ellipsis: Additional Controls
-  Group Chat: Access & join group chat
-  Participant List: View/mute participants
-  Disconnect: Disconnect from meeting



Meeting Control Taskbar

### TIPS & TRICKS

- ✓ Setup: For best results, download Microsoft Teams application for free. Internet browsers should be on most recent version.
- ✓ Computer: Plug-in power cord to ensure enough charge to last meeting.
- ✓ Network: Connect to a wired network connection for best results.
- ✓ Devices: External mic & speakers OR office phone are recommended.
- ✓ Phone - \*1 lists commands, \*6 unmutes the phone.
- ✓ Etiquette: Mute when not speaking.



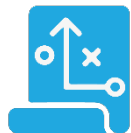
July 8, 2020

# The San Gabriel Valley Greenway Network Strategic Implementation Plan



# Welcome

- Introductions and Welcoming Remarks
  - Recap of the June Steering Committee meeting
  - The purpose of today's meeting
- Presentation
  - Schedule
  - Questions/comments related to June meeting
  - Example Story Maps
  - Draft Project Prioritization Poll
  - Update on Channel Information Study
- Next Steps
  - September 9, 2020, 2PM to 5PM



### Plan Development – Efforts & Studies

Aug 2019 - June 2020

- Existing Studies & Plan Compilation

### Plan Development - Existing Conditions

Jan 2020-Feb 2021

- Database of Projects, As-Builts, and Potential Gaps
- Channel Geometric Characteristics and Design Flows
- County Channels GIS mapping

### Database & GIS Map

March 2020-Feb 2021

- GIS Database
- Regulatory Roadmap
- GIS Mapping

### Develop Greenway Network Plan

April 2020-Fall 2021

- Tributary Maps
- Project Priority Matrix
- Bike Path Alternatives
- Potential Project List
- Conceptual Designs for Each Watershed
- Guidelines & Standards
- Greenway Network Plan

### Plan Development – Environmental Documents

Aug 2020 - April 2022

- Environmental Strategy
- EIR/EIS

## San Gabriel Valley Greenway Network Strategic Implementation Plan



### Public Engagement & Community Meetings

April 2020-Fall 2021

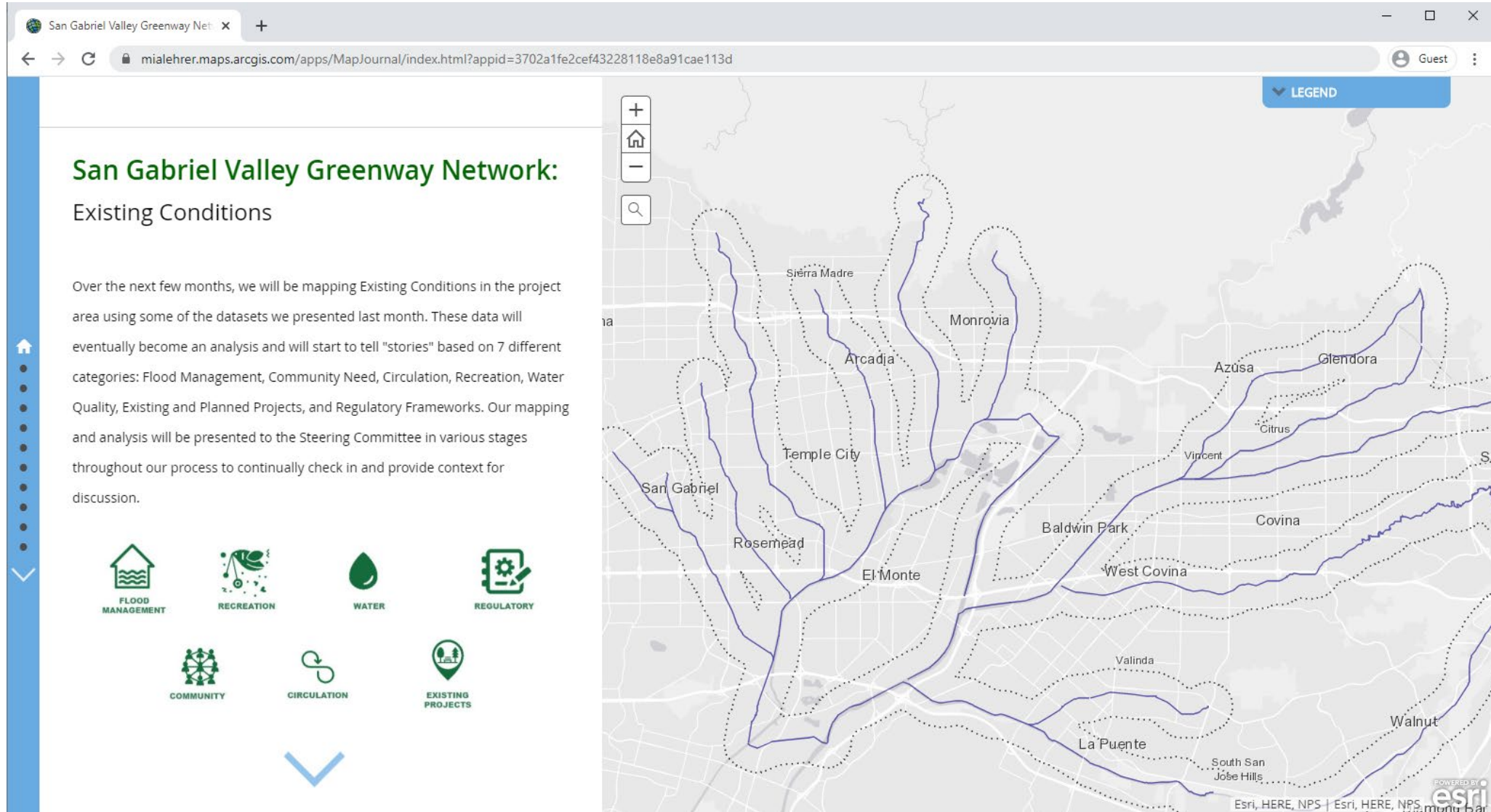
- Graphic Standards
- Community Engagement Plan
- Community Workshops
- Audience Messaging
- Website



### Steering and Technical Advisory Meeting

Today-Project Completion

# Preliminary Story Maps



# Live Teams Poll – Development of Prioritization Principles

- How to prioritize within our themes/big categories?
- Rank in your order of priority

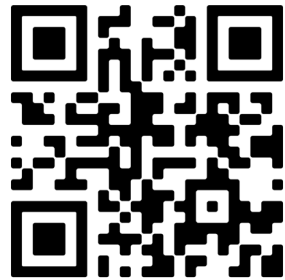
# Polling Categories

- **Recreation**, identifying projects or reaches that:
  - Add the most park acreage
  - Link or connect the highest number of parks
  - Serve the most park-poor areas
- **Water**, identifying projects or reaches that:
  - Confer the greatest stormwater quality benefits
  - Conserve the most water
  - Capture or reuse the most stormwater
  - Devote the most acres for wildlife habitat
  - Connect the most acres of wildlife habitat
- **Community**, identifying projects or reaches that:
  - Create recreation and mobility options for under-served communities
  - Have the most support with the community
  - Create the most opportunities for public art
  - Have the potential to address safety concerns
- **Circulation**, identifying projects or reaches that:
  - Create the greatest ease of connectivity
  - Best connect people to more modes of transit
  - Improve options of mobility for the greatest number of people
- **Planned Projects**, identifying projects or reaches that:
  - Can share funding across multiple project funding sources
  - Are the most cost effective per multi-benefit use
  - Are easy and fast to implement
  - Have the fewest regulatory concerns
  - Have the fewest operations and maintenance burdens

# Polling Instructions

- Step 1: Click on the link provided in the comments section <https://pollev.com/jessescolavi458>
- Step 2: Type in your name or organization when prompted (Do Not Skip)
- Step 3: Wait for polling to begin!

Scan to poll from  
your phone →



**Welcome to jessescolavi458's presentation!**

**Introduce yourself**

Enter the screen name you would like to appear alongside your responses.

Continue

Skip

- Polling will be a series of ranking (drag and drop) and open-ended questions

# Rank these ice cream flavors

Strawberry

Vanilla Bean

Chocolate Chip

Neapolitan

Cookies and Cream

# **In terms of RECREATION, it would be vital for my organization to identify projects or reaches that:**

add the most park  
acreage

link or connect the  
highest number of parks

serve the most  
park-poor areas

# Further comments about RECREATION themes/categories...

# In terms of WATER, it would be vital for my organization to identify projects or reaches that:

confer the greatest  
stormwater quality benefits

conserve the most water

capture or reuse the most  
stormwater

devote the most acres for  
wildlife habitat

connect the most acres of  
wildlife habitat

# Further comments about WATER themes/categories...

# **In terms of COMMUNITY, it would be vital for my organization to identify projects or reaches that:**

create recreation and mobility  
options for under-served communities

have the most support with the  
community

create the most opportunities for  
public art

have the potential to address safety  
concerns



# Further comments about **COMMUNITY** themes/categories...

# **In terms of CIRCULATION, it would be vital for my organization to identify projects or reaches that:**

create the greatest ease of  
connectivity

best connect people to more  
modes of transit

improve options of mobility  
for the greatest number of  
people

# **Further comments about CIRCULATION themes/categories...**

# **In terms of EXISTING PROJECTS, it would be vital for my organization to identify projects of reaches that:**

can share funding across multiple  
project funding sources

are the most cost effective per  
multi-benefit use

are easy and fast to implement

have the fewest regulatory  
obstacles

have the fewest operations and  
maintenance burdens

# **Further comments about EXISTING PROJECT themes/categories...**

# Update on Channel Information Study



# Discussion



# Next Steps

September 9<sup>th</sup>, 2020 Steering Committee Meeting  
Discussion of technical work:

- Existing Conditions Mapping,
  - Constraints Analysis and
  - Site walks (pending)
- 
- Meeting summary to be sent out after the meeting
  - Comments on the data summaries due on August 3rd





Thank you. **Questions?**