







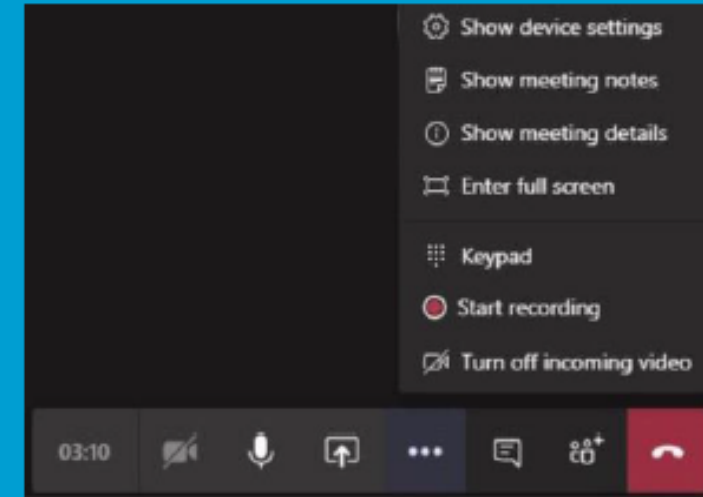
Microsoft Teams for Meeting Guests

Workstation



MEET

-  Camera: Mute/unmute camera
-  Microphone: Mute/unmute microphone
-  Ellipsis: Additional Controls
-  Group Chat: Access & join group chat
-  Participant List: View/mute participants
-  Disconnect: Disconnect from meeting



Meeting Control Taskbar

TIPS & TRICKS

- ✓ Setup: For best results, download Microsoft Teams application for free. Internet browsers should be on most recent version.
- ✓ Computer: Plug-in power cord to ensure enough charge to last meeting.
- ✓ Network: Connect to a wired network connection for best results.
- ✓ Devices: External mic & speakers OR office phone are recommended.
- ✓ Phone - *1 lists commands, *6 unmutes the phone.
- ✓ Etiquette: Mute when not speaking.



June 10, 2020

The San Gabriel Valley Greenway Network Strategic Implementation Plan



Welcome

- Introductions and Welcoming Remarks
- Powerpoint Presentation
 - Questions/comments related to May meeting
 - Community Engagement Update
 - Channel Information
 - Draft prioritization criteria
 - Schedule Review
- Next Steps
 - July 8, 2020, 2PM to 5PM
 - August 12, 2020, 2PM to 5PM
 - September 9, 2020, 2PM to 5PM



Plan Development – Efforts & Studies

Aug 2019 - June 2020

- Existing Studies & Plan Compilation

Plan Development - Existing Conditions

Jan 2020-Feb 2021

- Database of Projects, As-Builts, and Potential Gaps
- Channel Geometric Characteristics and Design Flows
- County Channels GIS mapping

Database & GIS Map

March 2020-Feb 2021

- GIS Database
- Regulatory Roadmap
- GIS Mapping

Develop Greenway Network Plan

April 2020-Fall 2021

- Tributary Maps
- Project Priority Matrix
- Bike Path Alternatives
- Potential Project List
- Conceptual Designs for Each Watershed
- Guidelines & Standards
- Greenway Network Plan

Plan Development – Environmental Documents

Aug 2020 - April 2022

- Environmental Strategy
- EIR/EIS



Public Engagement & Community Meetings

April 2020-Fall 2021

- Graphic Standards
- Community Engagement Plan
- Community Workshops
- Audience Messaging
- Website



Steering and Technical Advisory Meeting

Today-Project Completion

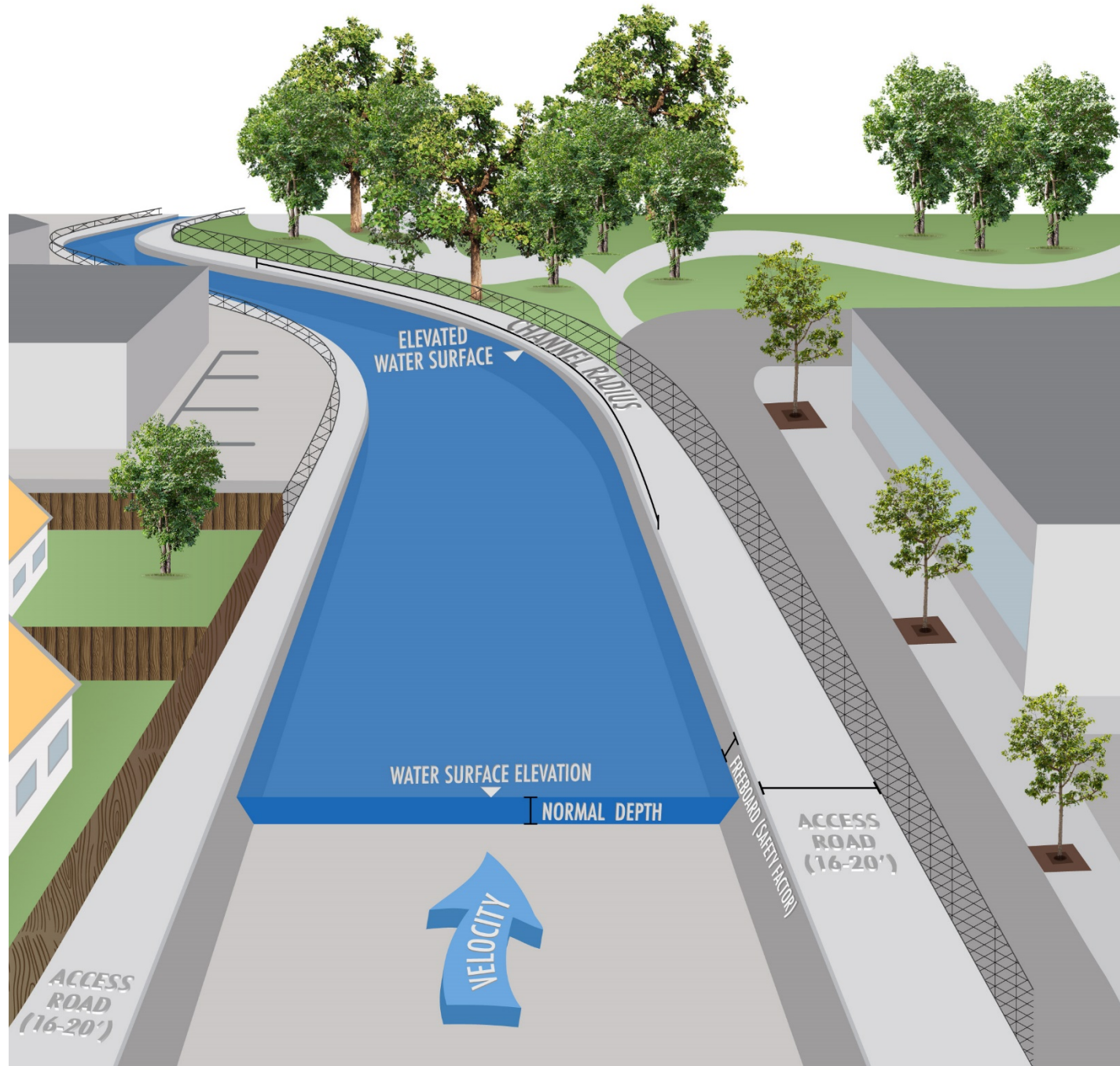
San Gabriel Valley Greenway Network Strategic Implementation Plan

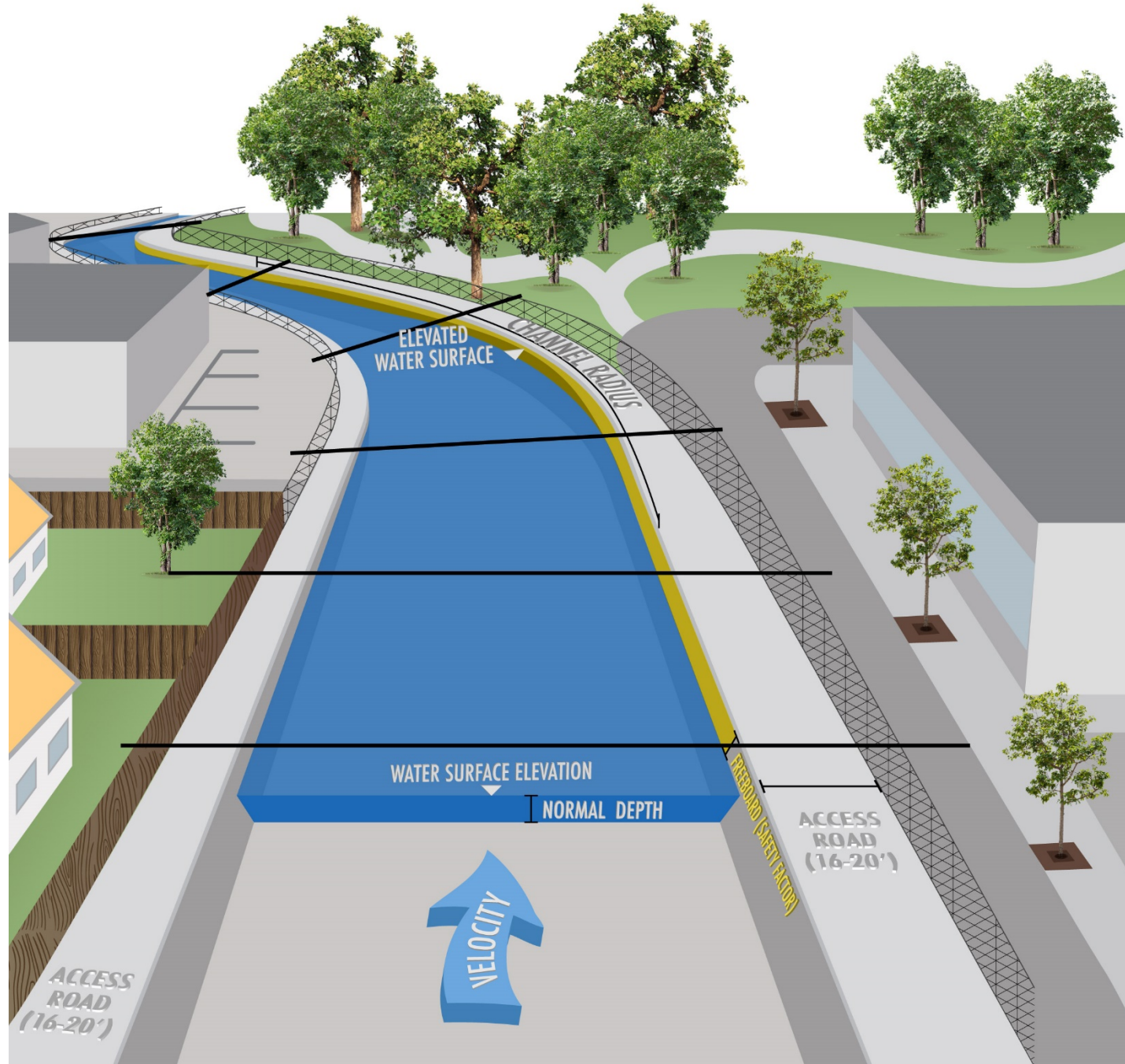
Community Engagement update

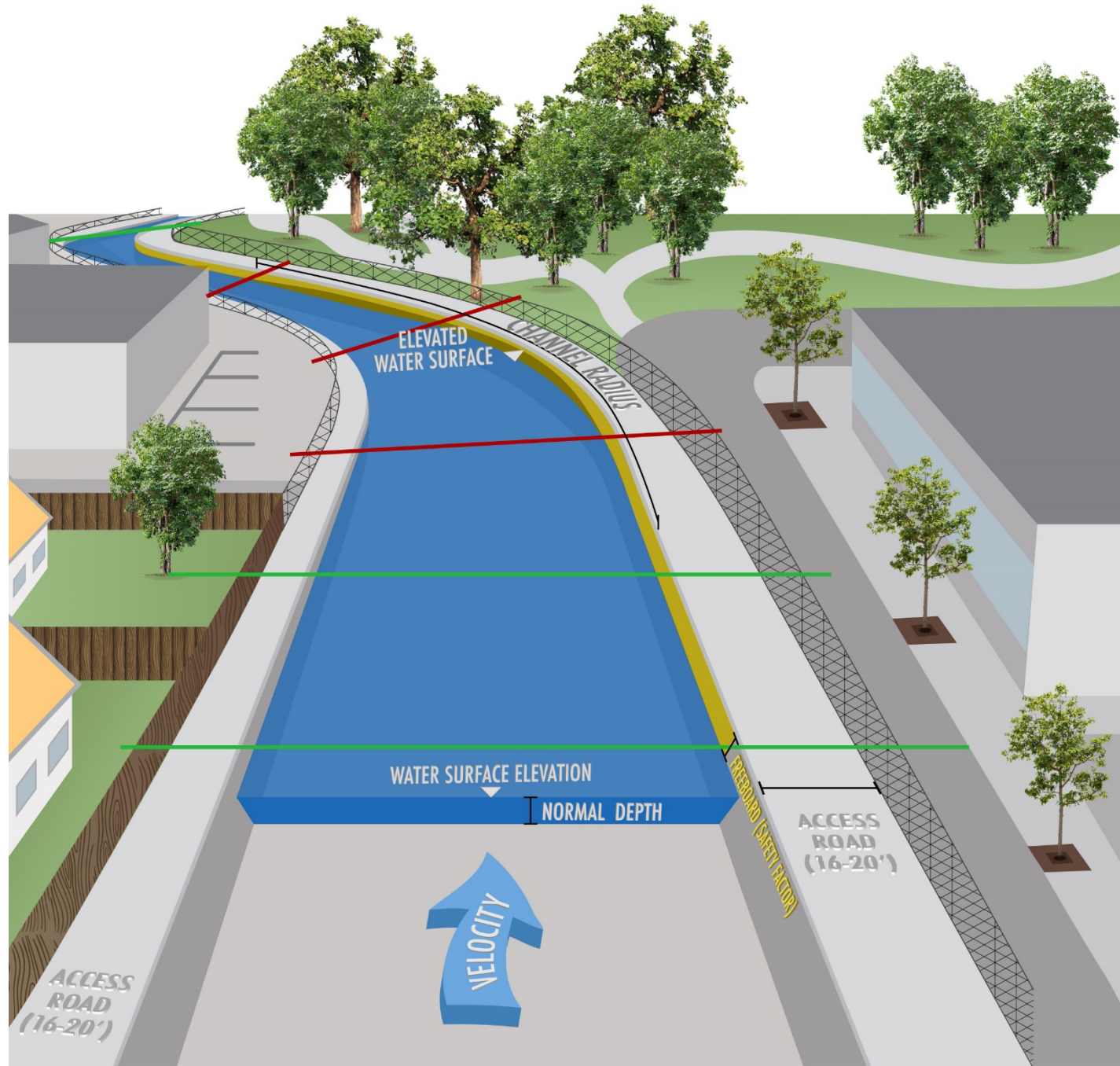
- Plan feedback
- Community status
 - County COVID 19 update
 - Virtual engagement

Review Channel Information



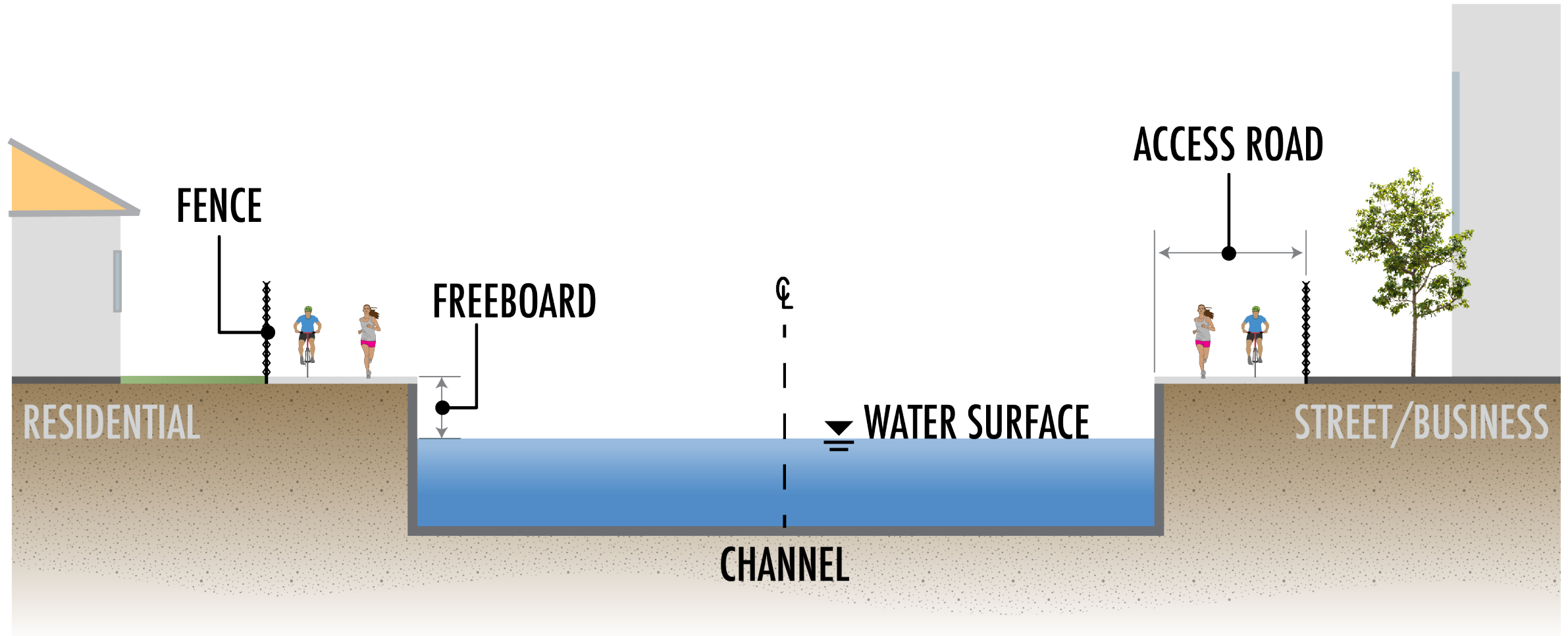




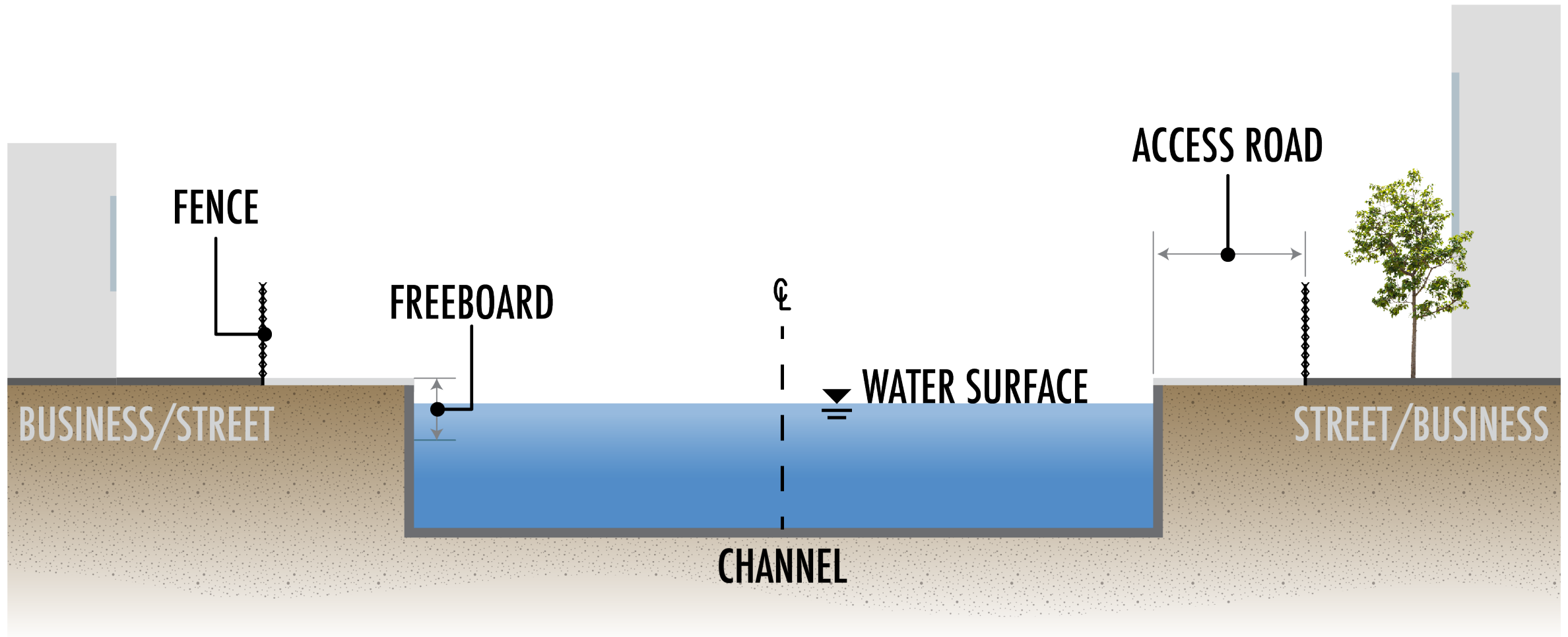




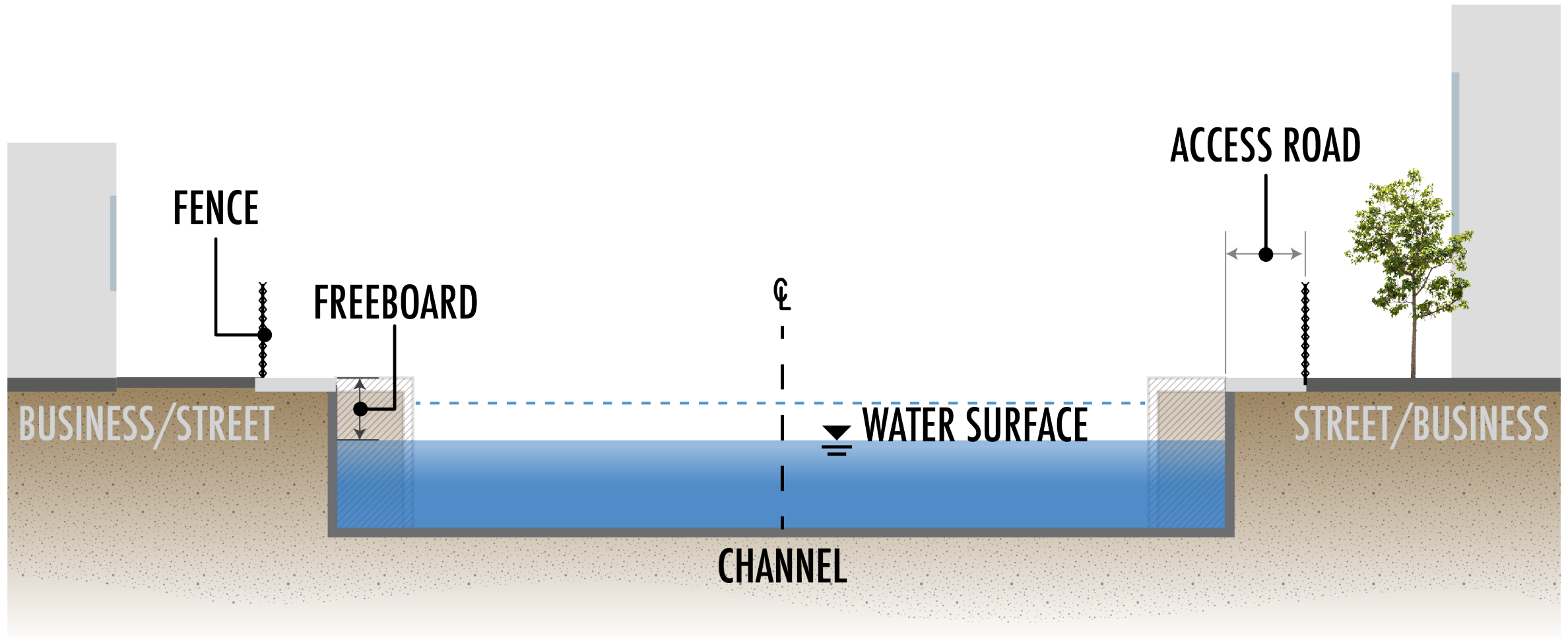
Channel with Adequate Capacity



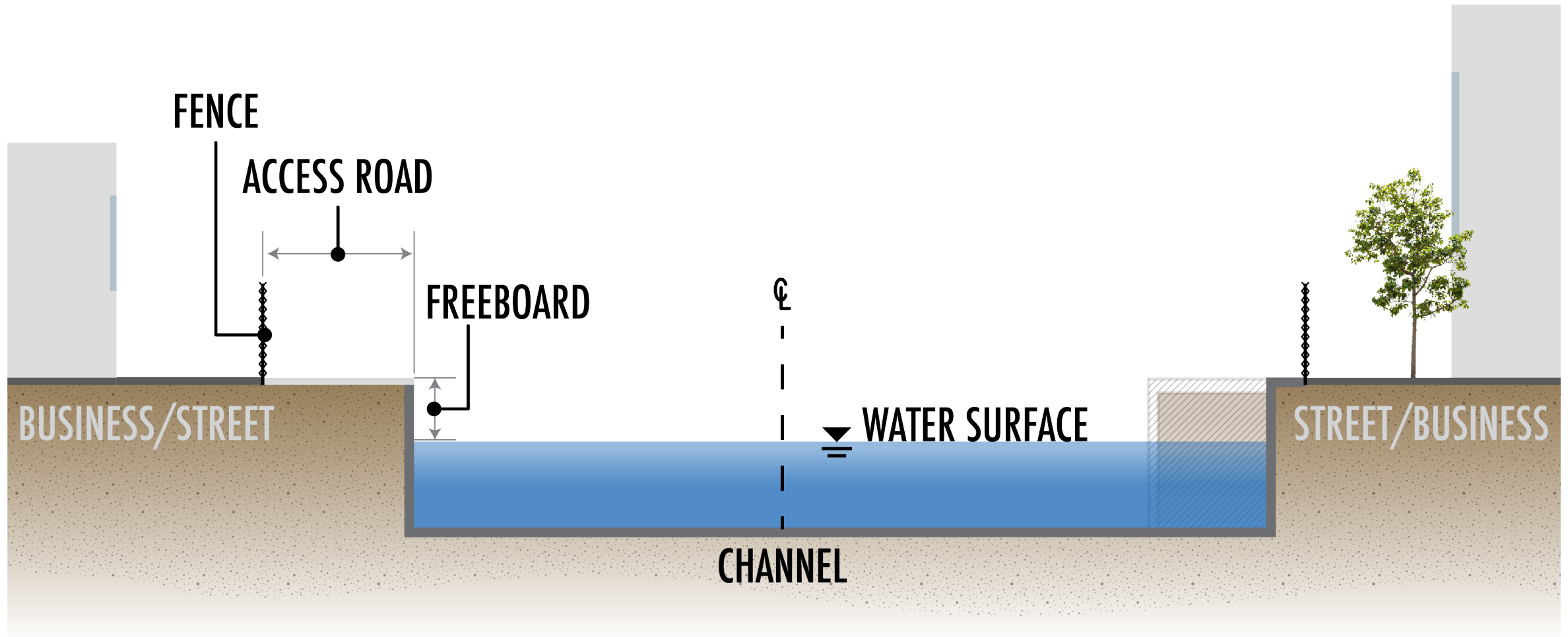
Channel with Inadequate Capacity



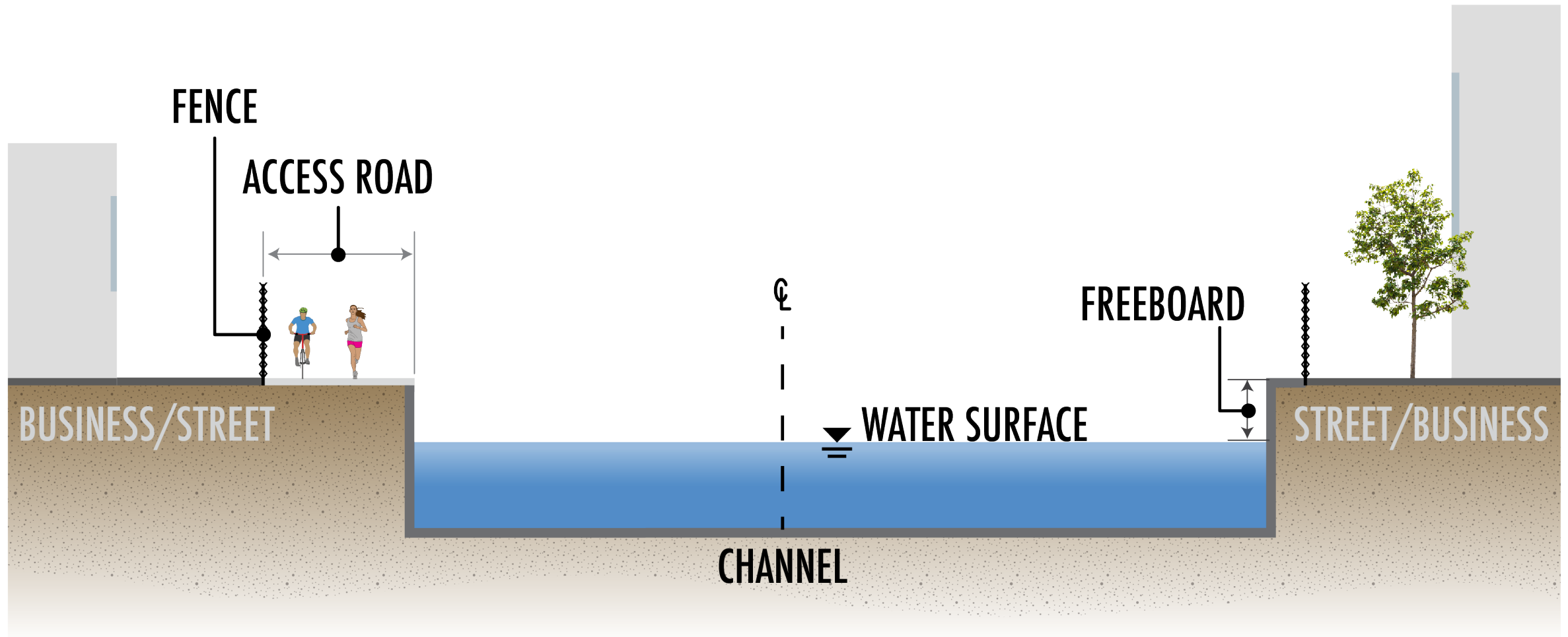
Channel Widened for Capacity (Both Sides)



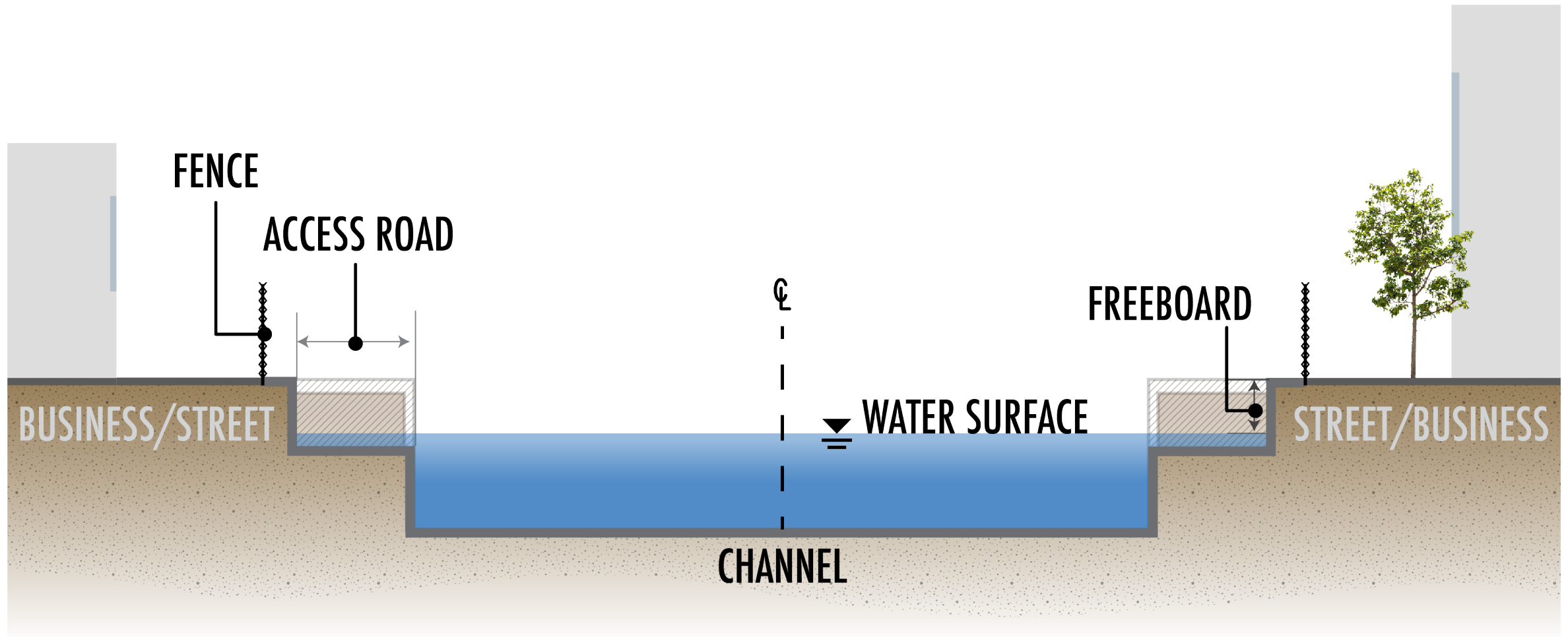
Channel Widened for Capacity (One Side)



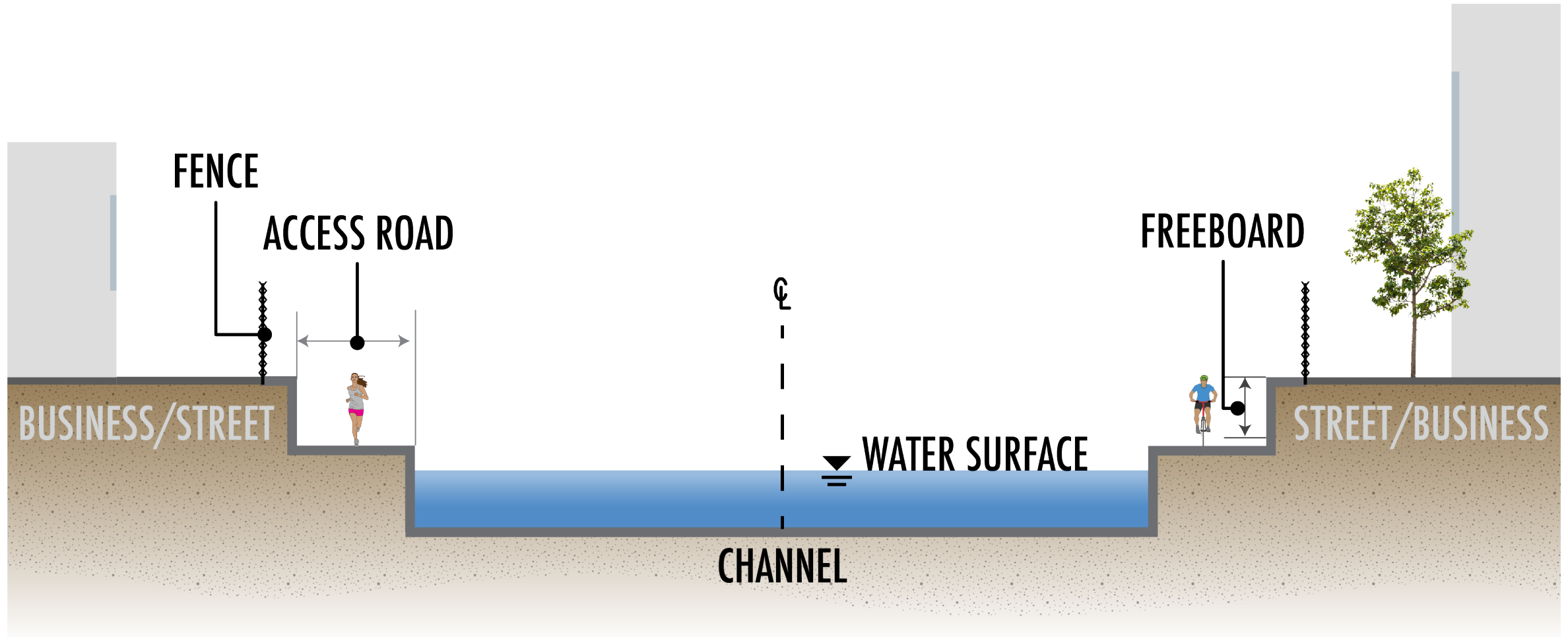
Channel Widened for Capacity (One Side)



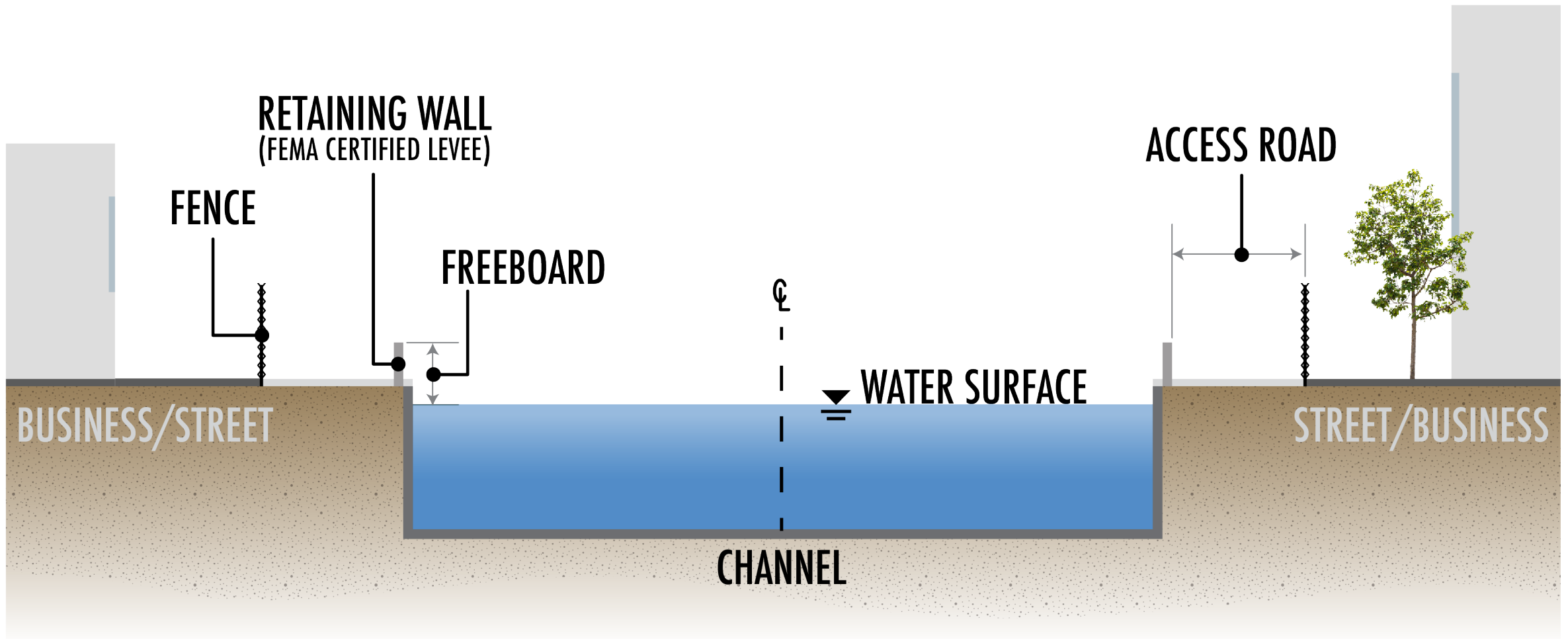
Channel Modified for Capacity (Irregular Channel)



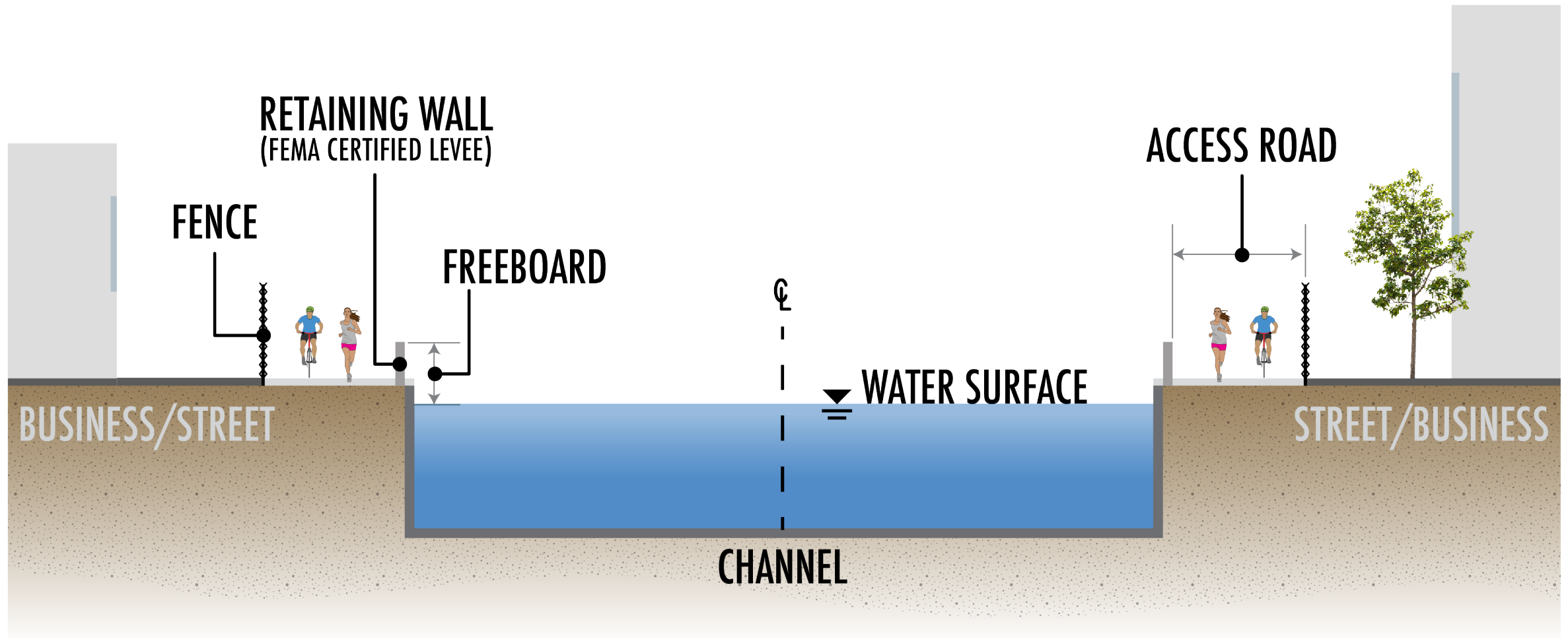
Channel Modified for Capacity (Irregular Channel)



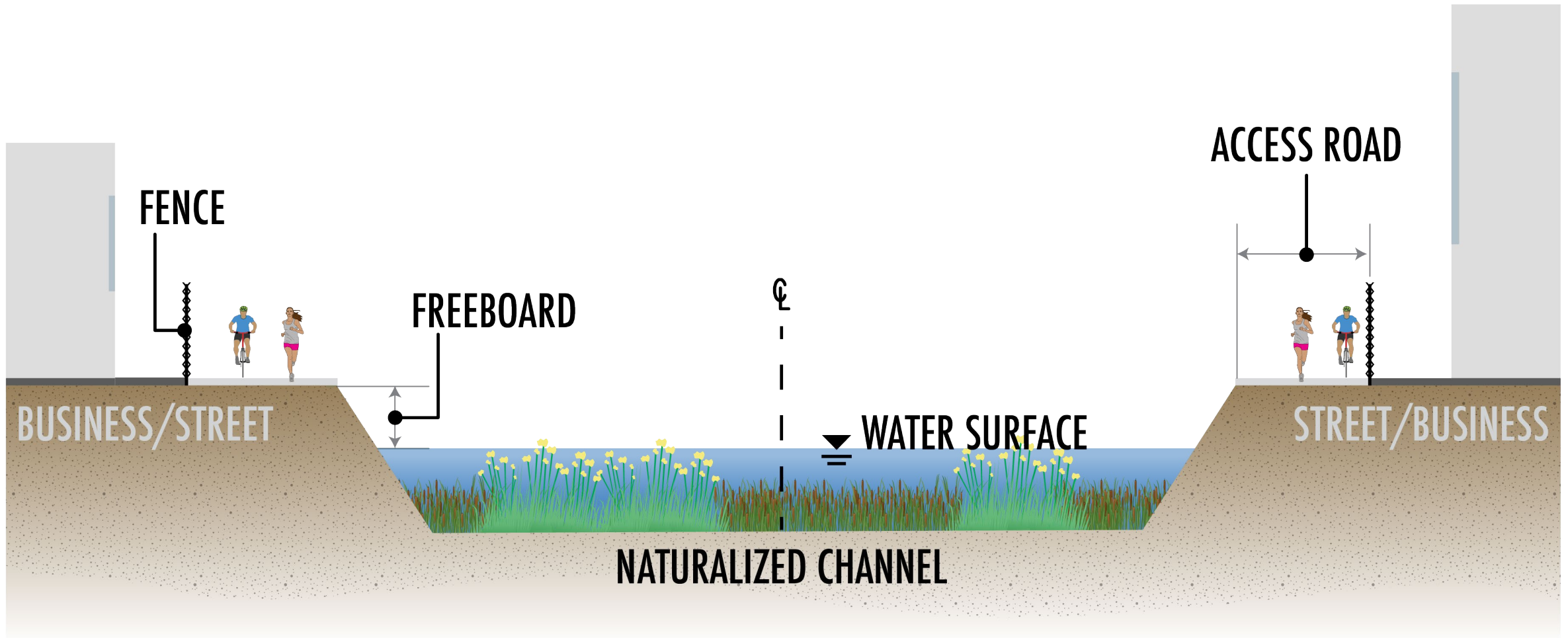
Channel Modified for Capacity (Retaining Wall)



Channel Modified for Capacity (Retaining Wall)



Naturalized Soft Bottom Channel Option



Discussion

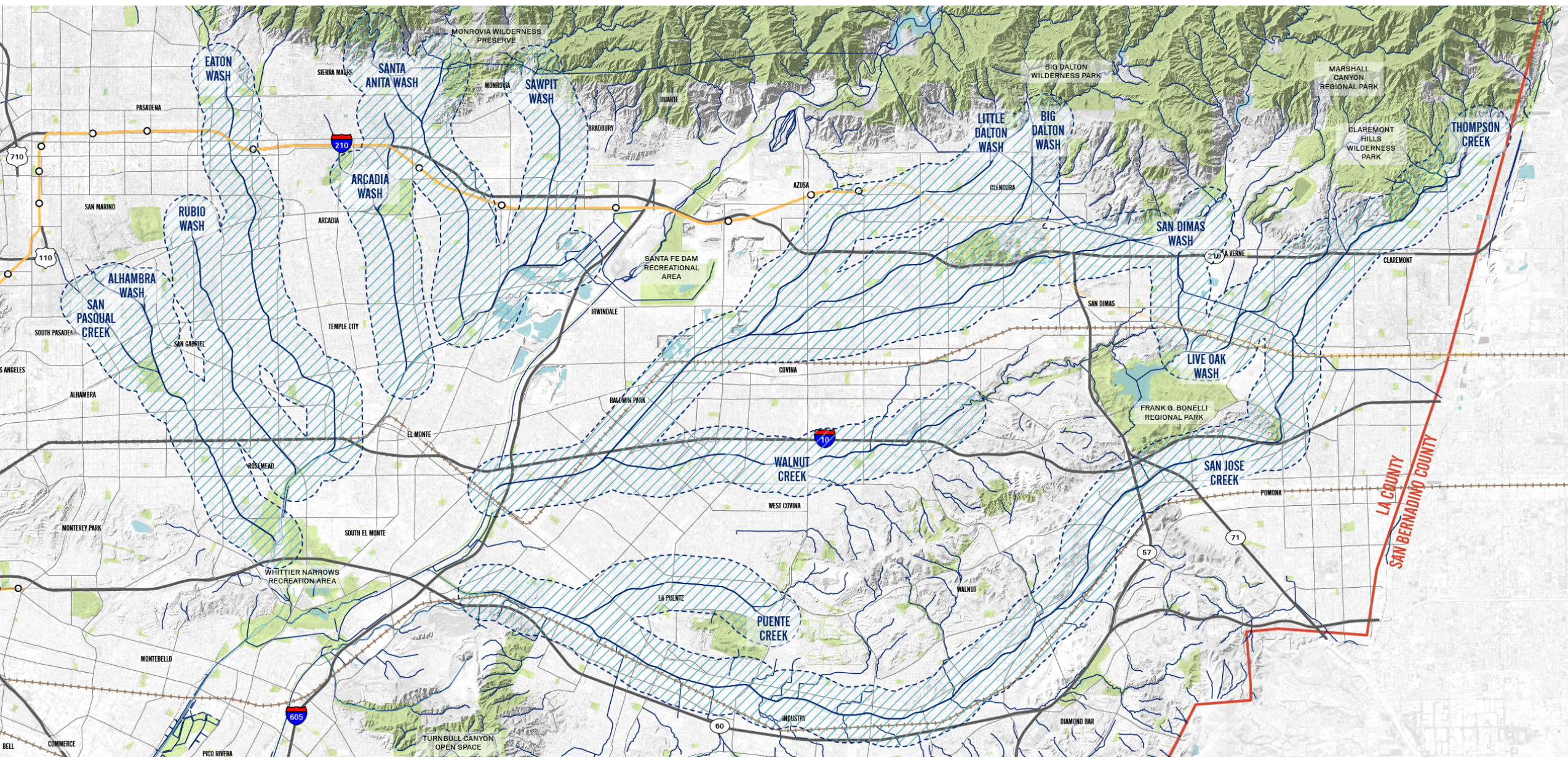


Draft Data Summary

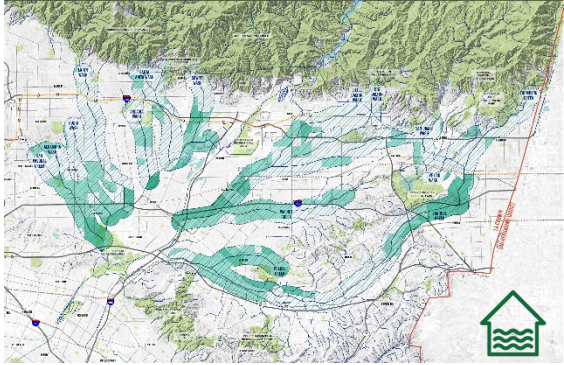


Data Summary – Study Area

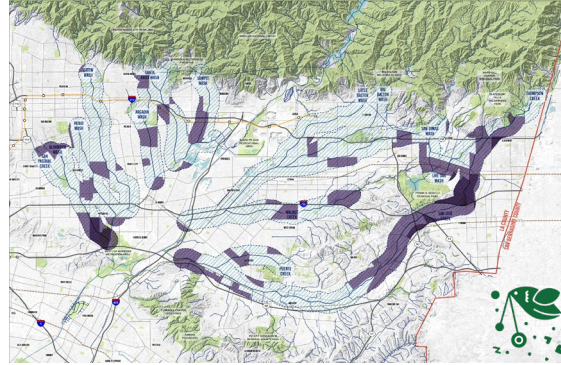
1/2 mile from waterways



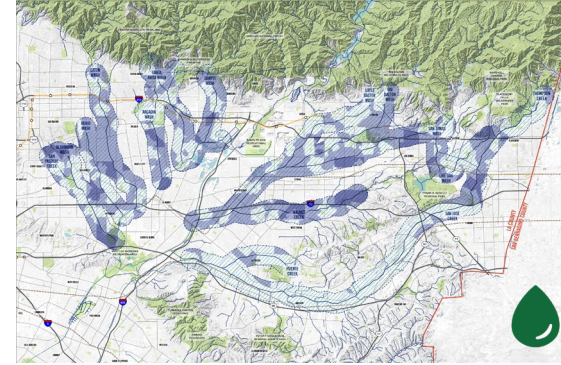
Data Categories



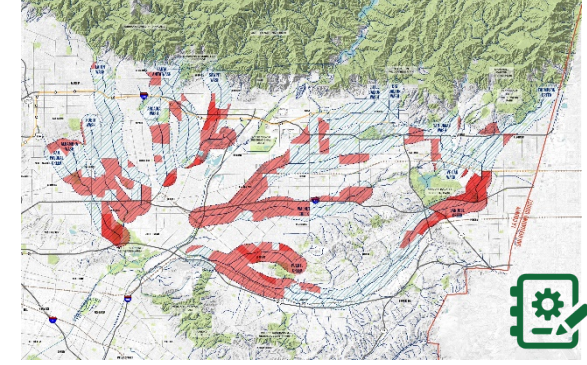
FLOOD MANAGEMENT



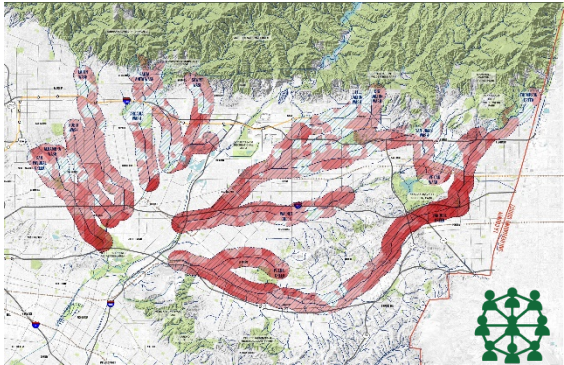
RECREATION



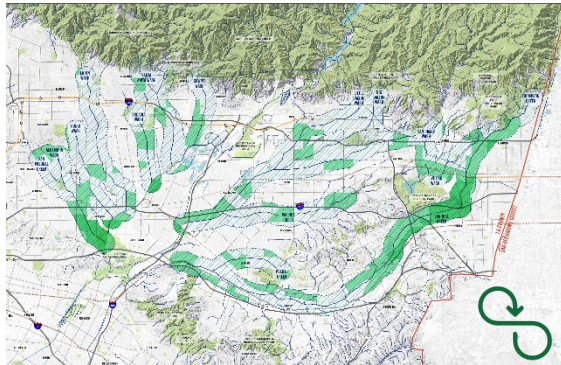
WATER



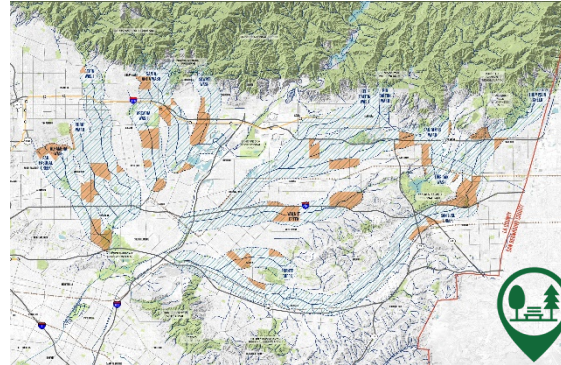
REGULATORY



COMMUNITY



CIRCULATION



EXISTING PROJECTS

The Flood Management Data Set

What we found



Existing Flood Risk

WHAT ARE... historical flooding patterns, unmet drainage needs, channel flood-capacity

Physical Feasibility for Flood Management Projects

IS THE AREA....complicated (traffic, topography, utilities, etc.), available (vacant/public/ open), next to critical land uses (hospitals, emergency routes, school yards, planned construction, etc.)

Partner Agency and Community Support

ARE THERE.... existing groups advocating for similar projects? Funding potential?

Existing Data Sources

Desktop Analysis, FEMA flood maps, Channel Analysis, LA County Unmet Drainage Needs, LA County Zoning, Existing Project Database, LA County Tax Assessors Parcel Data, LAUSD,, Google Earth, County Staff Evaluation

The Flood Management Data Set

What do we need to know?



Gaps. Is there additional data on Flood Management, that you have access to, that you suggest that we look at?

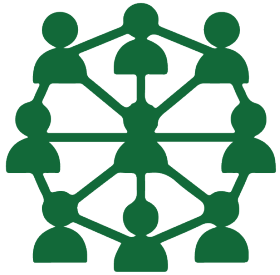
Nuance. From being on the ground, what do you know about Flood Management, that we should know?

Key Areas. Are there specific geographic areas & audiences for Flood Management that we should know about?

Leadership. What is the political landscape that effects Flood Management ? What are key Flood Management plans? Who are the key players? Who should we talk to?

The Community Data Set

What we found



Existing Community Needs

HOW MANY PEOPLE .. live in the area, can't walk to a local park, are in disadvantaged communities, are economically insecure, are exposed to pollution, have sensitive health conditions, are homeless?

Physical Feasibility for Community Projects

IS THE AREA....complicated (traffic, topography, utilities, etc), available (vacant/public/ open), next to critical land uses (hospitals, emergency routes, school yards, planned construction, etc.)

Partner Agency and Community Acceptance

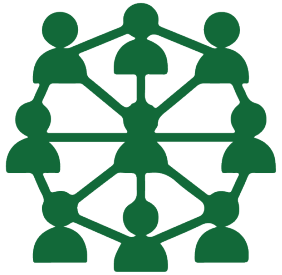
ARE THERE.... existing groups advocating for similar projects? Funding potential?

Existing Data Sources

2010 US Census, 2010 Census Data, LA County Park Needs Assessment, CalEnviro Screen, California Air Resources Board, California Department of Public Health, LAHSA Homeless Count, Public meetings, Discussions with council members, County staff evaluation

The Community Data Set

What do we need to know?



Gaps. Is there additional data on the Community, that you have access to, that you suggest that we look at?

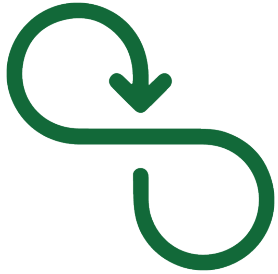
Nuance. From being on the ground, what do you know about the Community, that we should know?

Key Areas. Are there specific geographic areas & audiences in the Community? Who is coming to the area? What connections need to be made?

Leadership. What is the political landscape that effects the Community? What are key community plans? Who are the key players? Who should we talk to?

The Circulation Data Set

What we found



Existing Circulation

IS THE AREA...Transit-adjacent, next to key destinations, within a bikeway gap, connected to planned projects, within spaces that aren't shaded, within areas that lack access to the waterways?

ARE THERE... a high number of traffic related accidents, zero-vehicle households, residents needing alternative transit

Physical Feasibility for Circulation Projects

IS THE AREA....complicated (traffic, topography, utilities, etc), available (vacant/public/ open)

Partner Agency and Community Support

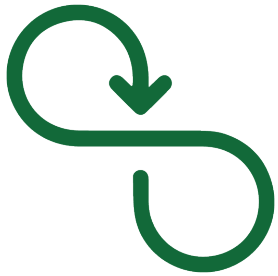
ARE THERE.... existing groups advocating for similar projects? Funding potential?

Existing Data Sources

Desktop analysis, Vision Zero Collision Data. Community Survey, 2010 Census, Bike/Ped Counts, SWITRS collision data, Metro ATSP data, California Spatial Cover Tree Canopy, LA County Tax Assessors Parcel Data, County Staff Evaluation

The Circulation Data Set

What do we need to know?



Gaps. Is there additional data on Circulation, that you have access to, that you suggest that we look at?

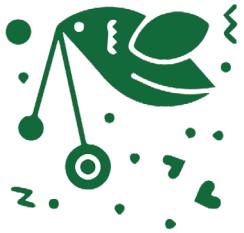
Nuance. From being on the ground, what do you know about Circulation, that we should know?

Key Areas. Are there specific geographic areas & audiences for Circulation that we should know about? Where are people coming from? What connections need to be made?

Leadership. What is the political landscape that effects Circulation? What are key Circulation plans? Who are the key players? Who should we talk to?

The Recreation Data Set

What we found



Existing Recreation

HOW MANY...people can't walk to park, acre are there per '000 people, quality parks are in the area, acres of significant land is there

Physical Feasibility

IS THE AREA....complicated (traffic, topography, utilities, etc), available (vacant/public/ open)

Partner Agency and Community Support

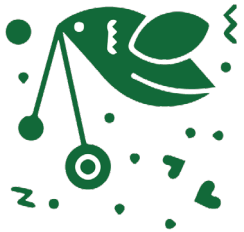
ARE THERE.... existing groups advocating for similar projects? Funding potential?

Existing Data Sources

Desktop analysis, 2010 Census Data, LA County Park Needs Assessment, LA County Significant Ecological Area, LA County Tax Assessors Parcel Data, County Staff Evaluation

The Recreation Data Set

What do we need to know?



Gaps. Is there additional recreation data, that you have access to, that you suggest that we look at.?

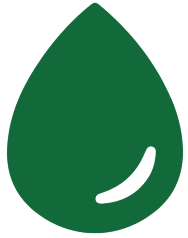
Nuance. From being on the ground, what do you know about recreation, that we don't know.

Key Areas. Are there specific geographic areas and audiences that we should know about when we think about Recreation? Who is coming to the space? What connections need to be made?

Leadership. What is the political landscape that effects Recreation? What are key recreation plans? Who are the key players? Who should we talk to?

The Water Data Set

What we found



Existing Water Conditions

What is the existing water quality? What is the volume of runoff in the area?

Physical Feasibility for Water Projects?

IS THE AREA....complicated (traffic, topography, utilities, etc), available (vacant/public/ open)

Partner Agency and Community Acceptance?

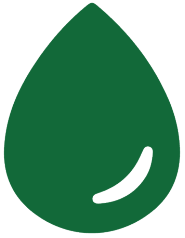
ARE THERE.... existing groups advocating for similar projects? Funding potential?

Existing Data Sets

State Water Resources Control Board, National Landcover Database, Desktop analysis, LA County Tax Assessors Parcel Data, County Staff Evaluation

The Water Data Set

What do we need to know?



Gaps. Is there additional water data, that you have access to, that you suggest that we look at?

Nuance. From being on the ground, what do you know about water, that we don't know.

Key Areas. Are there specific geographic areas and audiences that we should know about when we think about water?

Leadership. What is the political landscape that effects water? What are key plans that have support? Who are the key players? Who should we talk to?

Existing Projects Data Set

What we found



Existing Projects?

PAST planned and LID projects? Previous planning documents? Recent, dedicated outreach?

Partner Agency and Community Support

ARE THERE... existing groups advocating for these projects? Are they being funded?

Existing Data Sources

Literature review, Community input, CASQA

Existing Project Data Set

What do we need to know?



Gaps. Are there other existing projects that you suggest that we look at.?

Nuance. From being on the ground, what do you know about these projects, that we don't know.

Key Areas. Are there specific geographic areas and audiences that we should know about when we think about Existing Projects?

Leadership. What is the political landscape that effects Existing Projects? What are key plans that have support? Who are the key players? Who should we talk to?

The Regulatory Data Set

What we found



Regulatory Framework?

What projects have already had environmental analysis, regulatory constraints?

What are the regulatory jurisdictions in the planning area (City, County, Army Corps, Regional Board, SCAQMD, etc)?

What is the typical level of effort (time, cost, controversy) for regulatory approvals within each jurisdiction?

What additional regulatory requirements may be triggered?

What past projects have experienced regulatory challenges (challenge=legal challenge, or time and cost challenge)?

Physically Feasibility

Where are there ACOE flood control channels?

Where are fully protected species?

What past projects have failed, and for what reason?

Partner Agency and Community Acceptance?

Which jurisdictional areas have insurmountable requirements (insurmountable=many years or expensive studies)

Which areas may have regulatory feasibility, but low likelihood of gaining social license?

Existing Data Sources

County PEIR for Enhanced Watershed

Management Plans

Completed literature review

USACE National Wetland Inventory database

Los Angeles County Planning Department GIS
databases

County Staff experience

B&C Team experience

Los Angeles County Department of Public Works

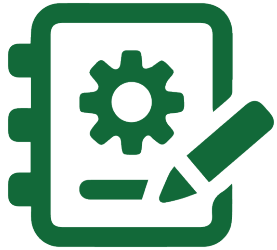
GIS data portal

Desktop analysis

California Natural Diversity Database

The Regulatory Data Set

What do we need to know?



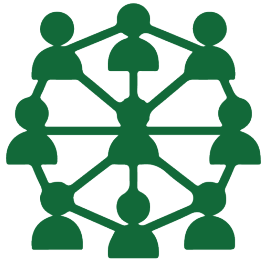
Gaps. Are there other existing regulations that you suggest that we look at.?

Nuance. From being on the ground, what do you know about these regulations, that we don't know.

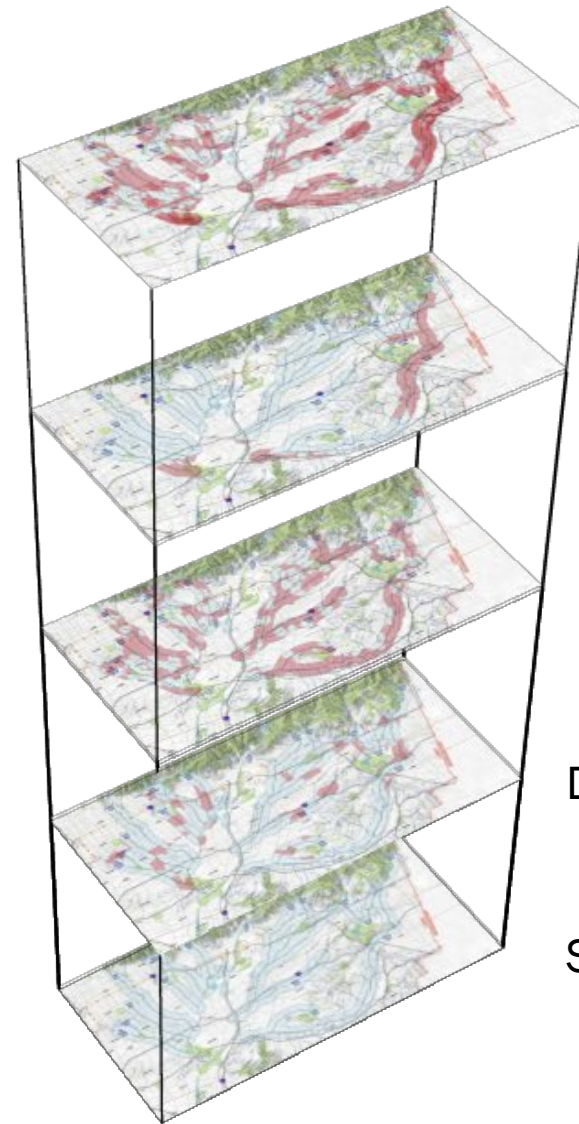
Key Areas. Are there specific geographic areas and audiences that we should know about when we think about regulations?

Leadership. What is the political landscape that effects regulations? What are key plans that have support? Who are the key players? Who should we talk to?

Mapping the Data Set



COMMUNITY



HEAT MAP

AIR POLLUTION

ACCESS TO PARKS

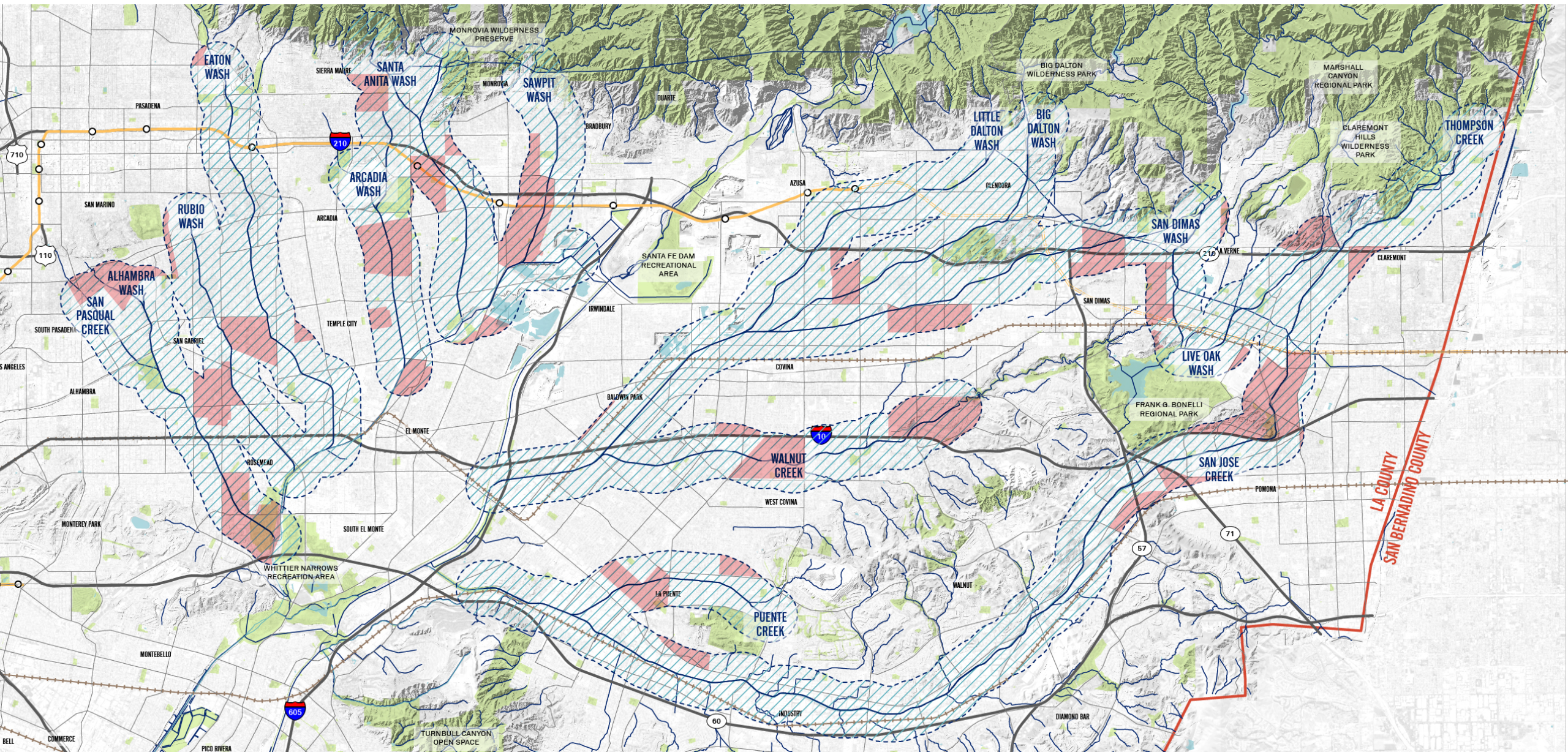
DENSE AREAS

STUDY AREA

Mapping the Community Data

HOW MANY PEOPLE LIVE IN THE AREA?

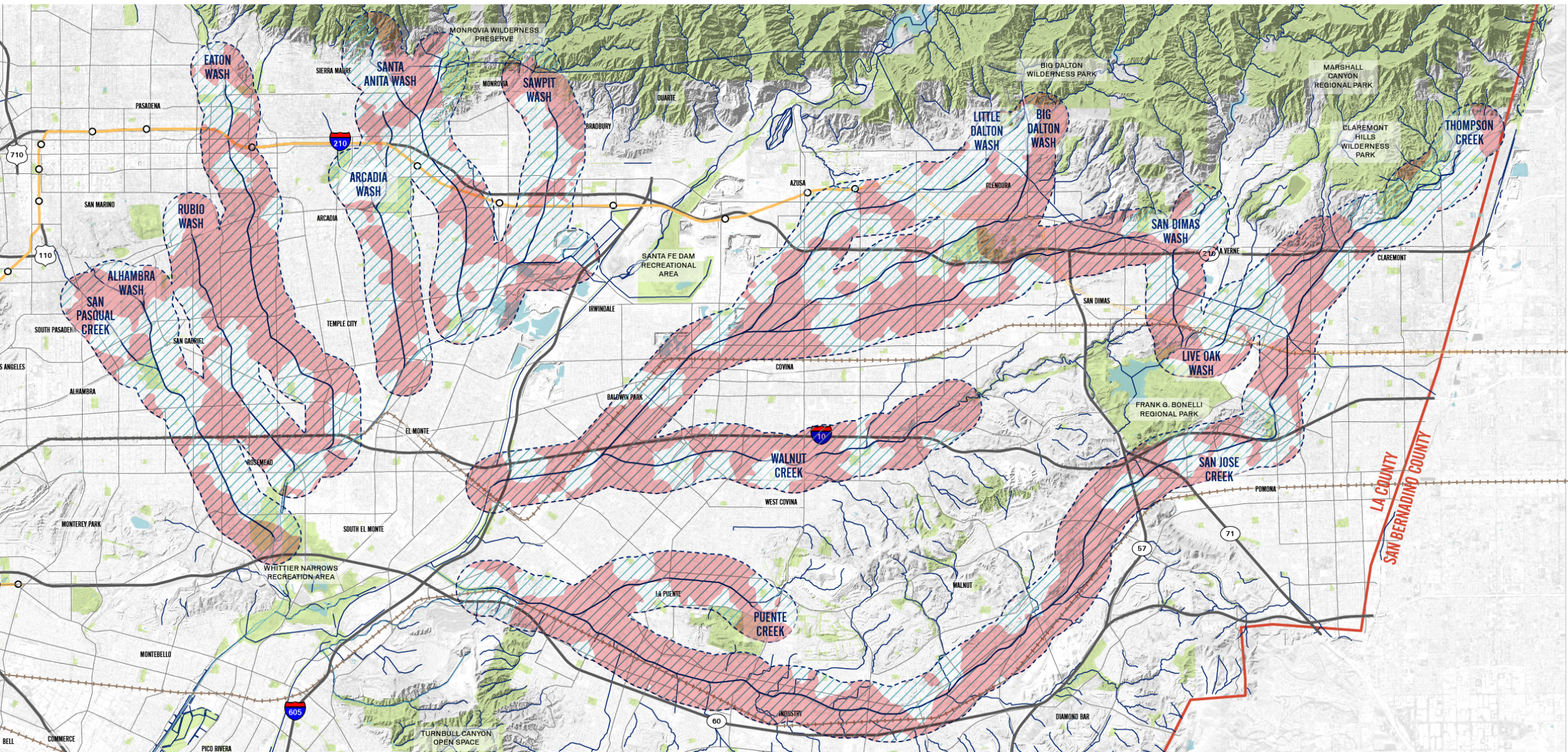
Top 25% most dense census tracts in LA County (2010 Census)



Mapping the Community Data

PARK ACCESS

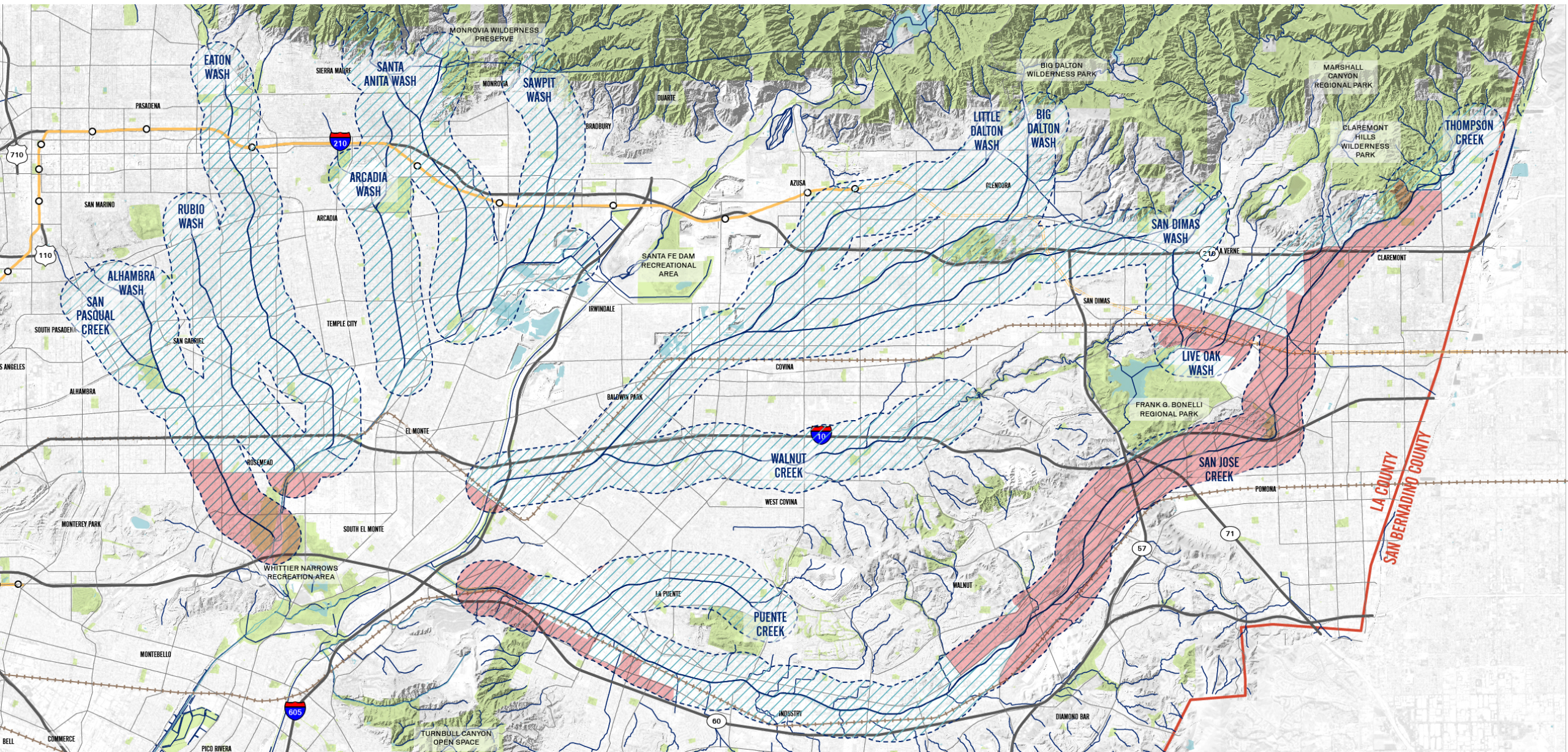
More than ½ mile from open space (Desktop Analysis)



Mapping the Community Data

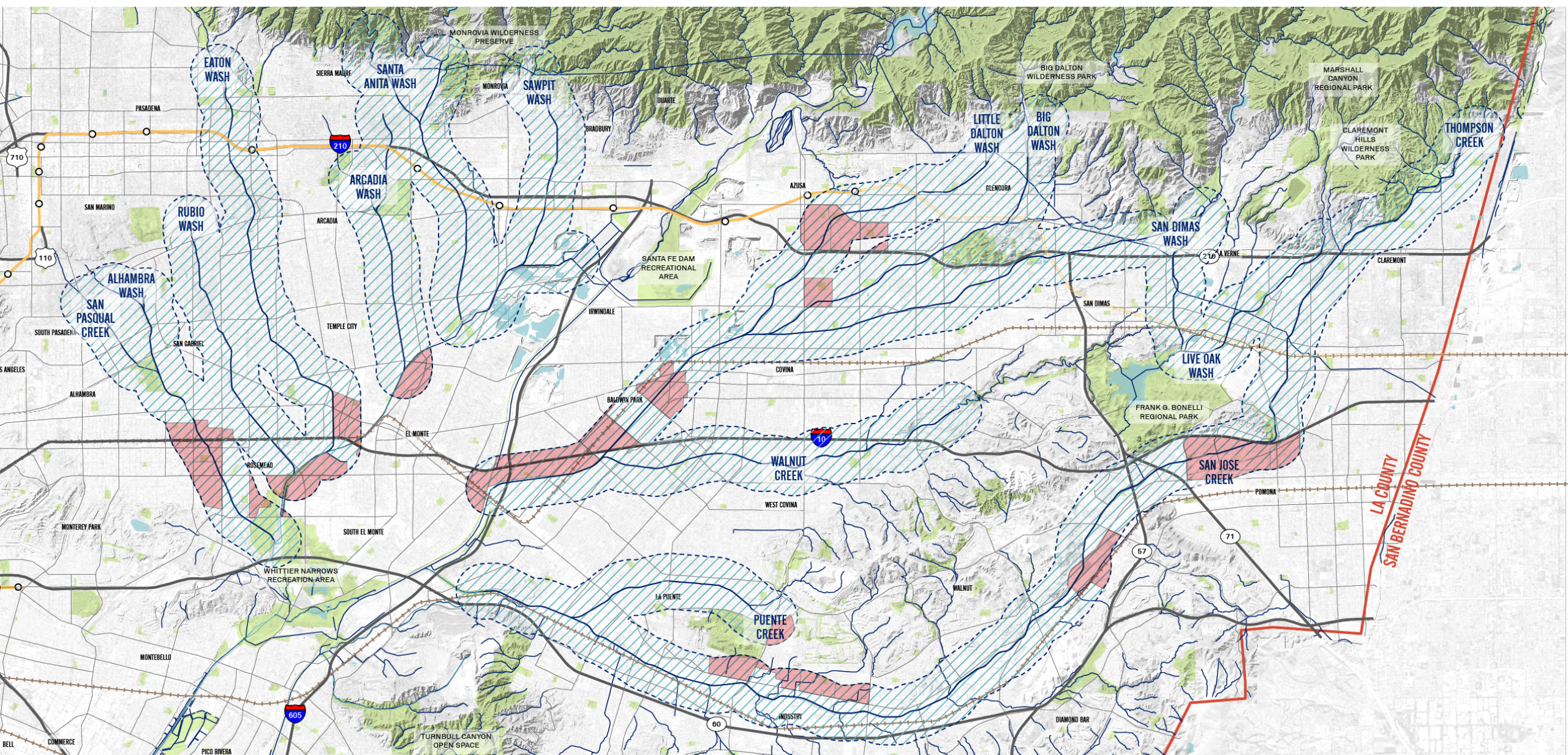
AIR POLLUTION EXPOSURE

Tracts that are in the top 25% for ozone, particulate mater, diesel, pesticide, and toxic release (California Air Resources Board)



Mapping the Community Data

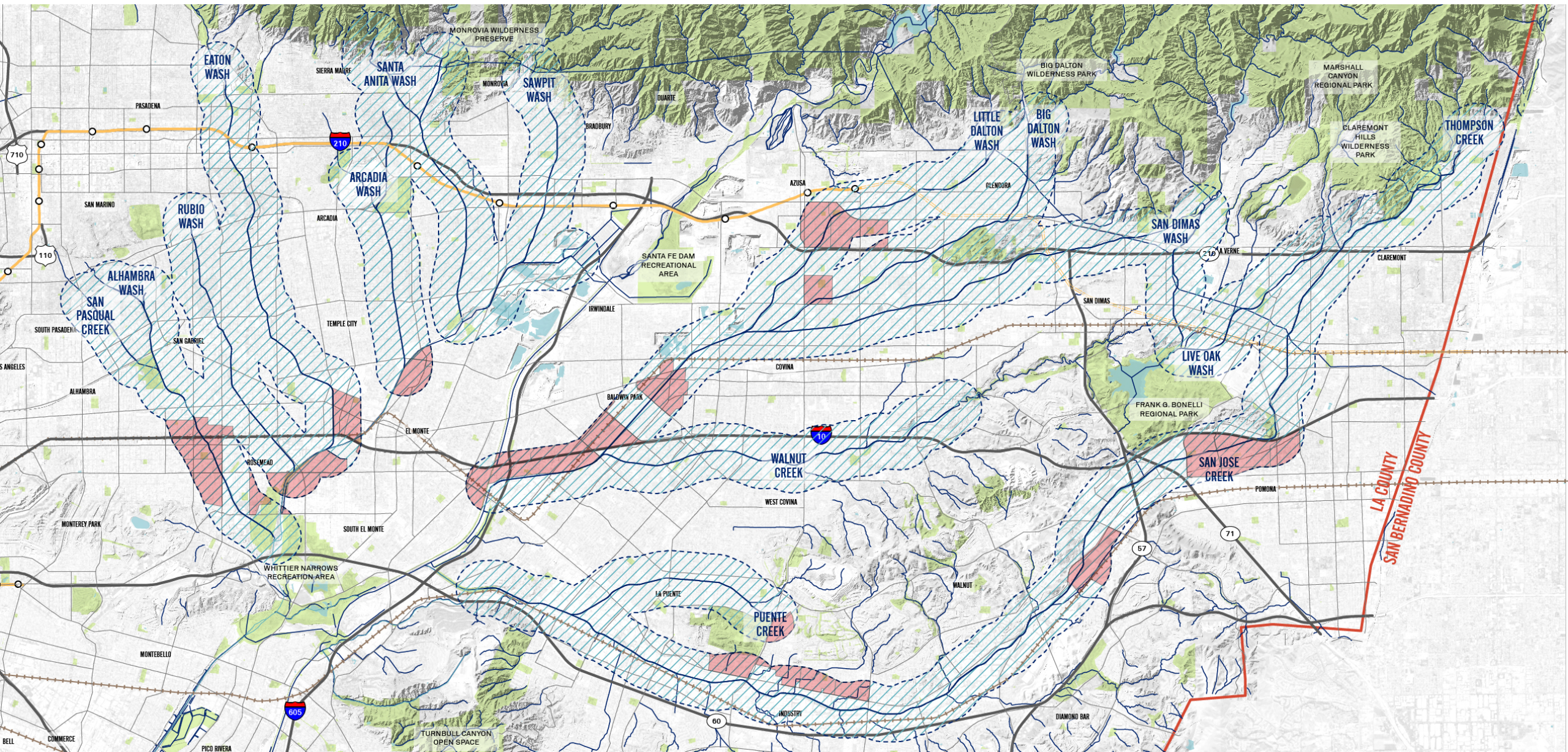
ECONOMIC FRAGILITY
Tracts that are in the top 25% for Housing Burden,
Household Income, and Unemployment (US Census)



Mapping the Community Data

SENSITIVE POPULATIONS

Tracts that are in the top 25% for Asthma, Cardiovascular Disease, Low Birth Weight (California Department of Public Health)

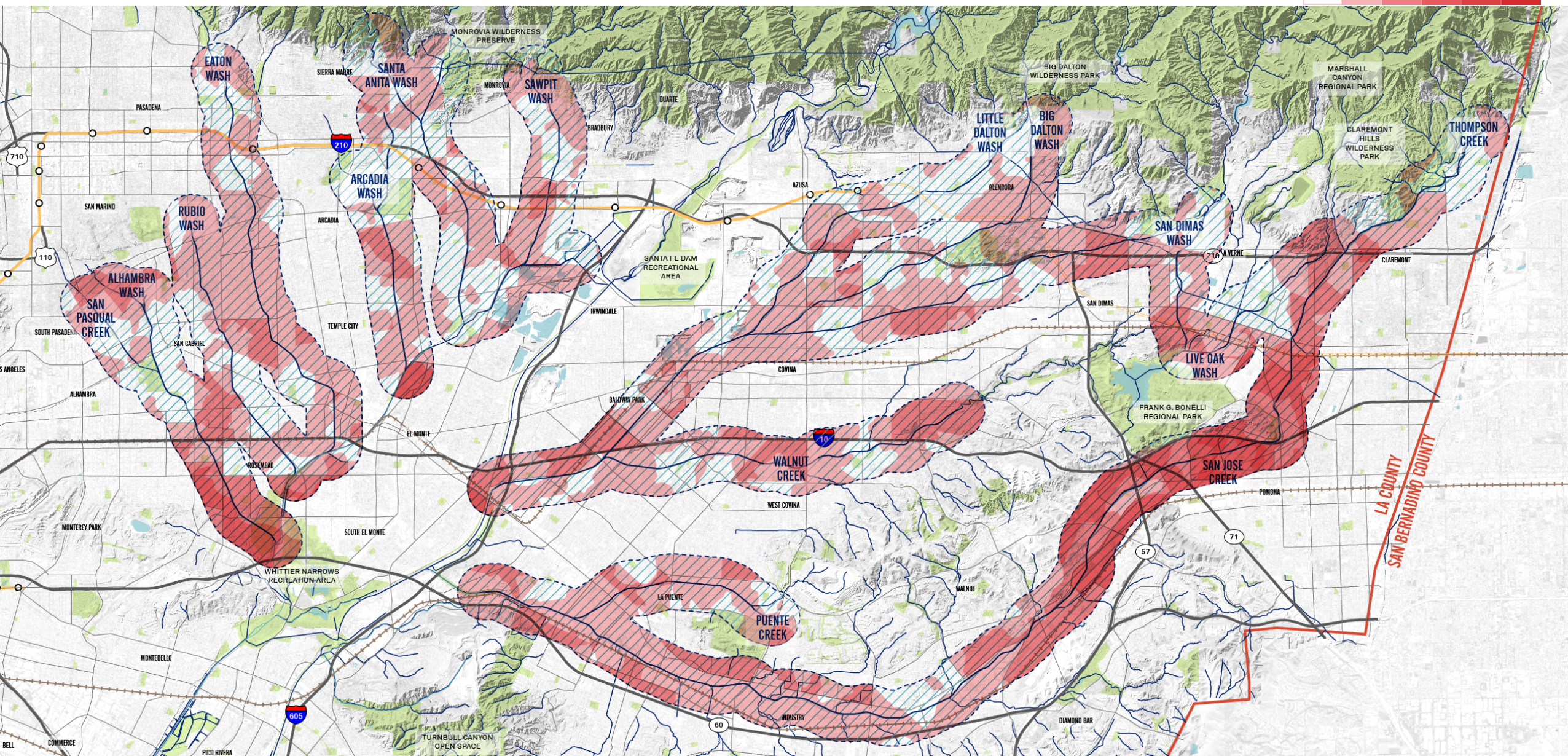
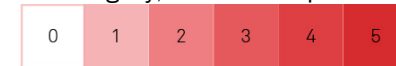


Mapping the Community Data

THE COMMUNITY HEAT MAP

Density, Park Access, Air Pollution, Economic Fragility, Sensitive Populations

NUMBER OF CRITERIA



Discussion



Next Steps

July 8, 2020 Steering Committee Meeting

Discussion of technical work:

- Existing Conditions Mapping,
 - Constraints Analysis and
 - Site walks (pending)
-
- Meeting summary to be sent out after the meeting
 - Comments on the data summaries due on July 1st
 - Future scheduled meetings: August 12th and September 9th





Thank you. **Questions?**