

April 15, 2020

# The San Gabriel Valley Greenway Network Strategic Implementation Plan



# Agenda







1. Microsoft Teams Orientation
2. Introductions and welcoming remarks from Public Works
3. PowerPoint Presentation
  - Scope of Project
  - Schedule of Project
  - Audience Messaging/Public Engagement
    - Strategies to address community engagement keeping in mind our new normal with social interaction and distancing.
  - Compilation of Task 3 Studies TM Overview
    - Presentation and discussion of map showing known projects in the area
    - Virtual participation by Stakeholder Committee members to address gaps
  - Task 4 Update
    - Presentation of a map displaying the results of channel information data review
    - Demonstration of the tool produced for compiling channel as-built information
4. Next Steps

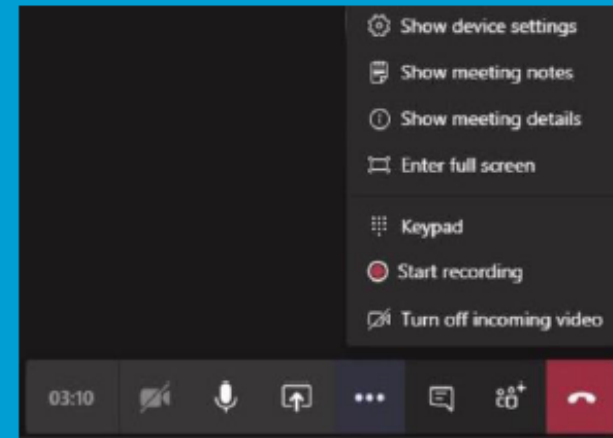
## Microsoft Teams for Meeting Guests

### Workstation



#### MEET

-  Camera: Mute/unmute camera
-  Microphone: Mute/unmute microphone
-  Ellipsis: Additional Controls
-  Group Chat: Access & join group chat
-  Participant List: View/mute participants
-  Disconnect: Disconnect from meeting



Meeting Control Taskbar

#### TIPS & TRICKS

- ✓ Setup: For best results, download Microsoft Teams application for free. Internet browsers should be on most recent version.
- ✓ Computer: Plug-in power cord to ensure enough charge to last meeting.
- ✓ Network: Connect to a wired network connection for best results.
- ✓ Devices: External mic & speakers OR office phone are recommended.
- ✓ Phone - \*1 lists commands, \*6 unmutes the phone.
- ✓ Etiquette: Mute when not speaking.



# Welcome and Introductions





# Welcoming Remarks

- Welcoming Remarks from LAC Flood Control District (Keith Lilley and Carolina Hernandez)
- SGV Greenway Project background and the role of the Steering Committee (Eric Baul)

# LACFCD Team and Steering Committee

## Steering Committee Members

Waqas Rehman, LAC B.O.S. SD1  
Martin Reyes (*alternate*)

Jocelyn Rivera-Olivas, LAC B.O.S. SD4  
Daritza Gonzalez (*alternate*)

Anish Saraiya, LAC B.O.S. SD5

Hannah Brunelle, SCAG  
Katie Ward, SGVCOG

Mark Stanley, RMC  
Sally Gee (*alternate*)

Keith Lilley, LACFCD  
Carolina Hernandez, LACFCD

Elaine Kunitake, LACPW TPP  
Andrew Ross (*alternate*)  
Wesley Reutimann, Active SGV  
David Diaz (*alternate*)

Rudy Ortega, Native American Indian Commission  
Alexandra Valdes (*alternate*)

Norma Quinones, SGV Conservation Corps  
Olga Duran (*alternate*)

Belinda Faustinos, Nature For All  
Bryan Matsumoto (*alternate*)

Robin Mark, Trust For Public Land  
Edna Robidas (*alternate*)

## Project Team

Dan Sharp, LACPW  
Enrique Baul, LACPW  
Jennifer Aborida, LACPW  
Lyndon Tat, LACPW  
Michelle O'Connor, LACDPR  
Natasha Krakowiak, LACDPR  
Sheela Mathai, LACDPR  
Loretta Quach, LACDPR  
Deborah Enos, WCA  
Jane Tsong, WCA  
Lisa Skutecki, Brown and Caldwell  
Rosey Jencks, Brown and Caldwell  
Jesse Scolavino, Brown and Caldwell

# Our Team is Structured to Support Your Vision for a Creative Network of Interconnected, Multi-use Community Greenways



PROJECT MANAGER, SUPERVISOR/ADMINISTRATOR  
*Lisa Skutecki, PE, ENV SP, IGP ToR, CPESC, QSD/P*

TECHNICAL SUPPORT

*Rosey Jencks*  
*Bill Leever, PG, CHG, ENV SP, QSP*  
*Brian Marengo, PE*

PROJECT ENGINEERS

*Mike Lin, PE*  
*Hamed Hakimelahi, PE, ENV SP*  
*Arvind Narayanan, PE, CFM*  
*Jesse Scolavino, EIT*

PLAN DEVELOPMENT – EXISTING  
PLANNING EFFORTS AND STUDIES

*Jan Dyer, PLA, ASLA, Studio-MLA*

PLAN DEVELOPMENT - EXISTING  
CONDITIONS

*Mark Krebs, PE, PACE*  
*Jose Cruz, MS, PE, PACE*  
*Bruce Philips, MS, PE*

GREENWAY NETWORK PLAN

*Rosey Jencks*  
*Jan Dyer, PLA, ASLA, Studio-MLA*

ENVIRONMENTAL  
DOCUMENTATION (CEQA/NEPA)

*Paul Leonard*  
*Dan Tormey, PhD, PG, Catalyst*  
*Environmental Solutions*

PUBLIC OUTREACH AND  
COMMUNITY MEETINGS

*Esmeralda Garcia, MIG*  
*Stephanie Pavon, MIG*  
*Noe Noyola, MIG*

TRAFFIC/BIKEWAY

*Carlos Velasquez, AICP, KOA*  
*Giuseppe Canzonieri, PE, KOA*

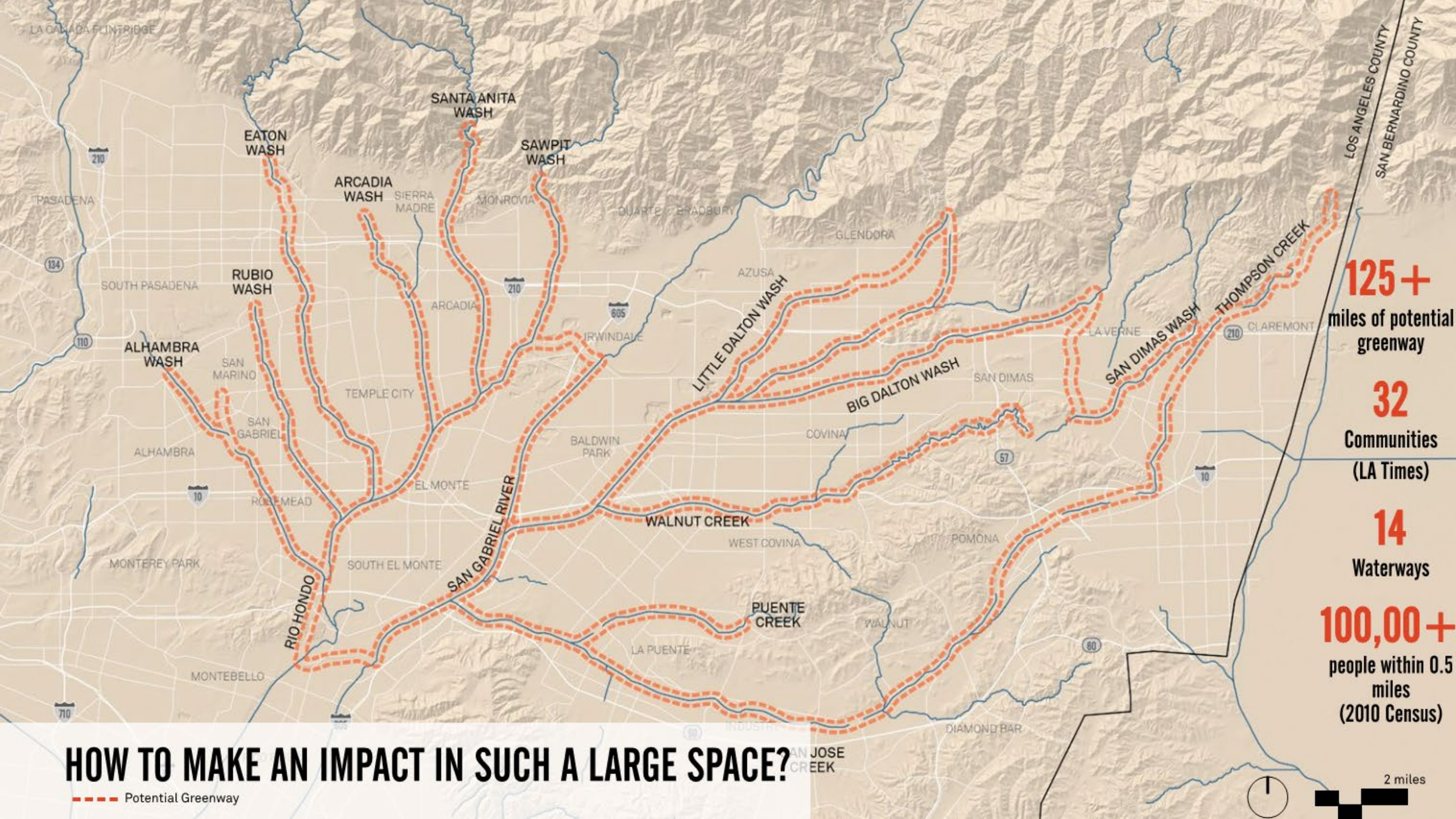
DATABASE/GIS MAP

*Jean Yang, Studio-MLA*  
*Kevin Johnson, Studio-MLA*  
*Mike Simms*  
*Tina Crawford*  
*Tony Howze, PACE*

# Scope of Work







**125+**  
miles of potential  
greenway

**32**  
Communities  
(LA Times)

**14**  
Waterways

**100,000+**  
people within 0.5  
miles  
(2010 Census)

# HOW TO MAKE AN IMPACT IN SUCH A LARGE SPACE?

--- Potential Greenway

2 miles



# Scope of Work

Task 1: Project Management.....	2	Task 6: Develop Greenway Network Plan .....	11
Task 001: Project Management and Coordination .....	2	Task 001: Greenway Network Plan .....	11
Task 002: Kick-Off Meeting.....	2	Task 7: Public Outreach and Community Meetings .....	14
Task 003: Monthly Progress Meetings .....	3	Task 001: Logo/Branding Package .....	14
Task 004: Project Close-Out Meeting .....	3	Task 002: Community Outreach Plan .....	15
Task 2: Steering Committee and Technical Advisory Committee Development.....	3	Task 003: Community Meetings .....	15
Task 001: Facilitation of Steering Committee and TAC Meetings .....	3	Task 004: Project Website.....	18
Task 3: Plan Development – Existing Planning Efforts and Studies .....	4	Task 8: Plan Development – Environmental Documentation.....	18
Task 001: Compilation of Studies .....	4	Task 001: Environmental Strategy and Roadmap .....	18
Task 4: Plan Development – Existing Conditions .....	5	Task 002: CEQA/NEPA Review and Draft EIR/EIS .....	19
Task 001: Data Research and Digital Database Development .....	6	Task 003: Final Programmatic EIR/EIS, Response to Comments, Record of Decision, and Mitigation Monitoring and Reporting Plan.....	20
Task 002: Channel Information Characteristics Dataset Development.....	7		
Task 003: GIS Analysis – Existing Channel Hydraulic Capacity .....	7		
Task 004: GIS Base Map Preparation .....	8		
Task 005: GIS Analysis – Additional Channel Improvements for Required Hydraulic Capacity.....	8		
Task 006: Existing Channel “Constraints” and Greenway “Opportunities” Analysis .....	8		
Task 5: Database and GIS Map.....	9		
Task 001: Database.....	10		
Task 002: GIS Mapping .....	10		



**ANALYZE**



**PRIORITIZE**



**GUIDE**



# Multi-use Greenway Development



## OUR APPROACH – Task 3

- Supporting Public Works to establish and facilitate the Steering Committee and Technical Advisory Committee (TAC)
- Review Literature
  - Provide a detailed list of all existing, and in development planning studies within the area
  - Identify and catalog projects, design standards, guidelines, and other relevant information
- Determine criteria for identification and prioritization of projects within the Greenway Network
  - Inform the criteria for identification and prioritization of projects within the area

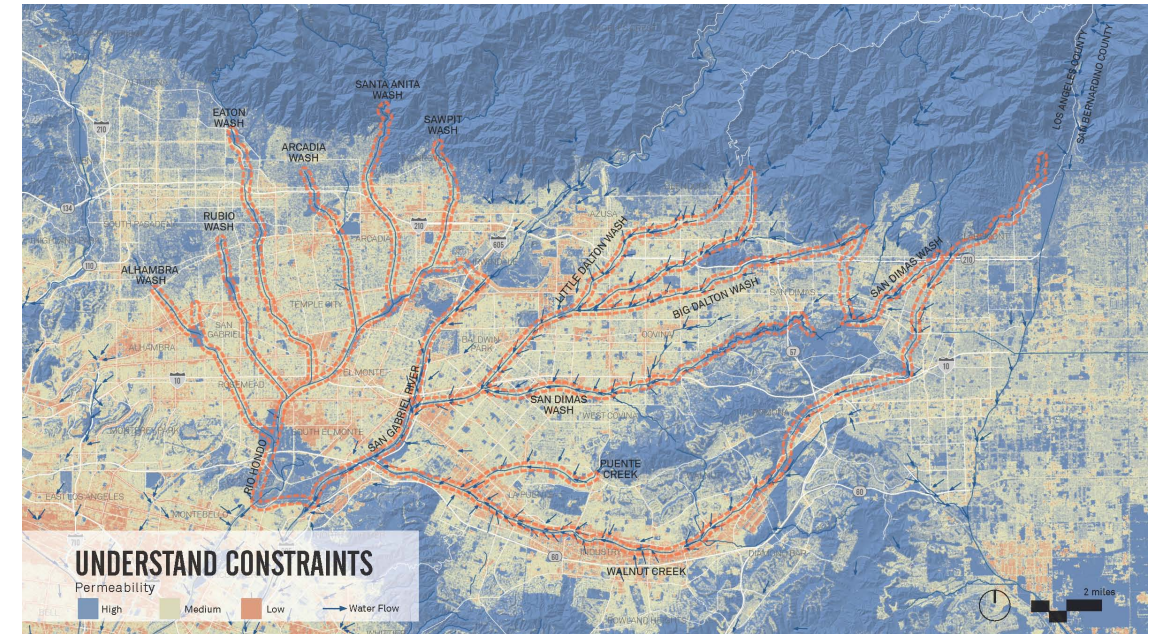
# Multi-use Greenway Development



## OUR APPROACH – Task 4

- **Determine Existing Conditions**

- Gather information from site visits, GIS data, the Los Angeles County Open Channel Condition Inspections, other project data, and input from the Steering Committee and TAC to determine:
  - Capacity deficiencies
  - Flood control and water conservation enhancement opportunities
  - Open space and parks opportunities
  - Existing and potential trails and access points
  - Safety and security concerns
  - Location of existing and potential crossings and bridges, utility corridors, vacant land, connections to community centers, schools and colleges



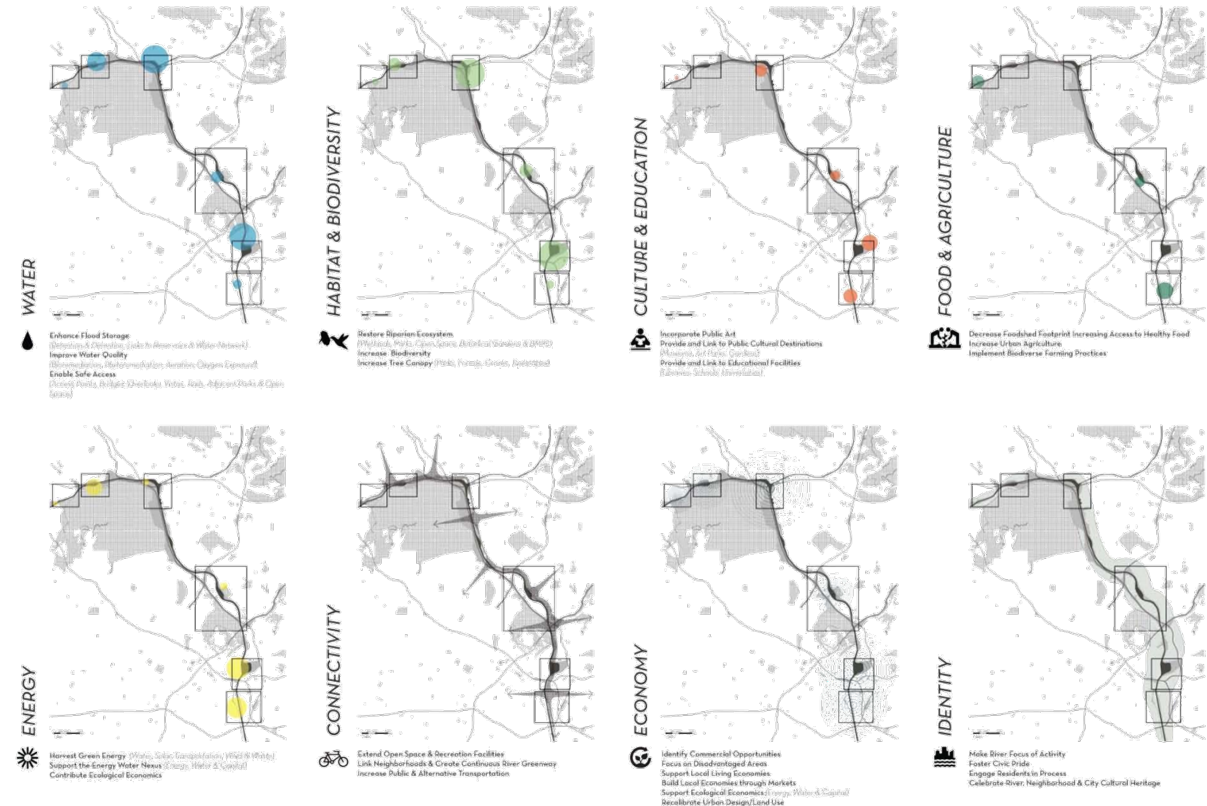


# Multi-use Greenway Development



## OUR APPROACH- Task 5

- **Develop a database** to map the Greenway Network GIS layers/mapping
- Each of the 30 cities and land uses along the flood control right-of-way presents a different texture, character, and setting. One size cannot fit all.
- Carefully study the local context to find suitable locations and strategies for:
  - Flood control
  - Trails and open space
  - Habitat
  - Ebbs and flows of water, food, waste, energy, commerce, people, and wildlife



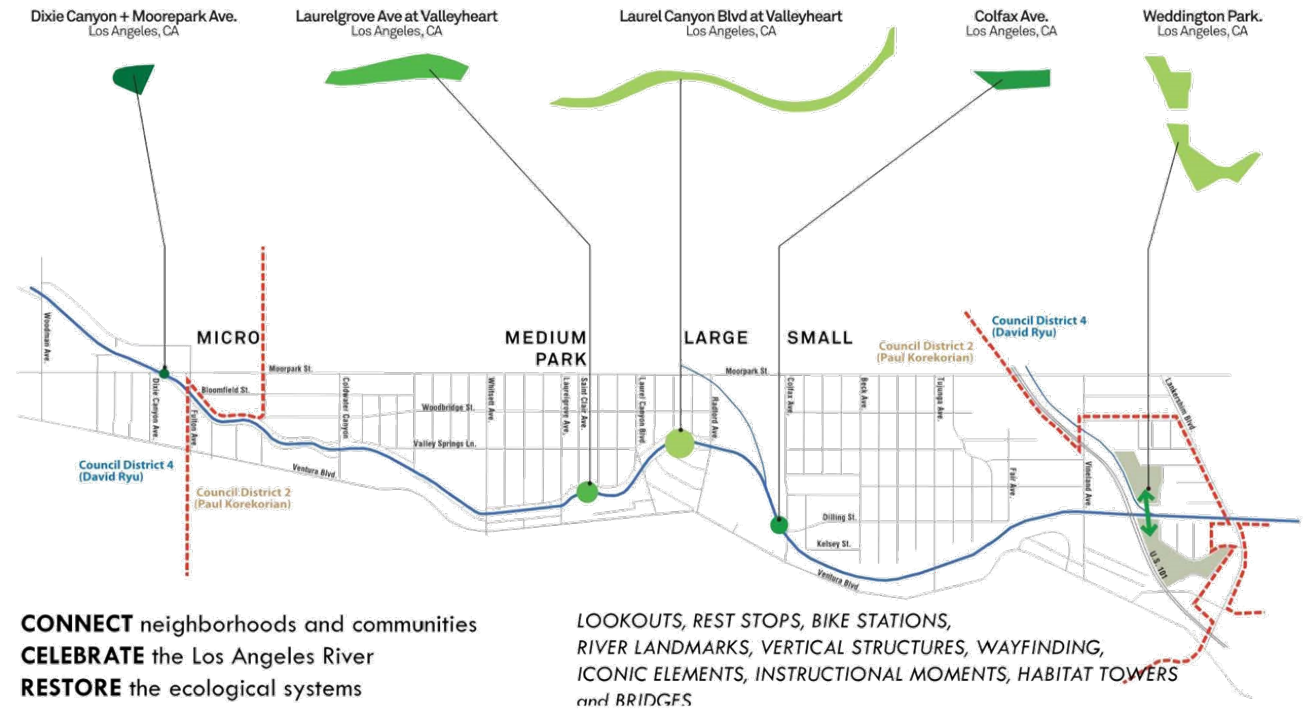


# Multi-use Greenway Development



## OUR APPROACH – Task 6

- Identify potential parks and open space projects, including multipurpose opportunities that incorporate green infrastructure and stormwater capture projects





# Multi-use Greenway Development



## OUR APPROACH

- Development of Guidelines



Directional signage doubles as footrest for bicyclists



Informational signage indicating location within overall corridor



Signage with corridor mileage markers

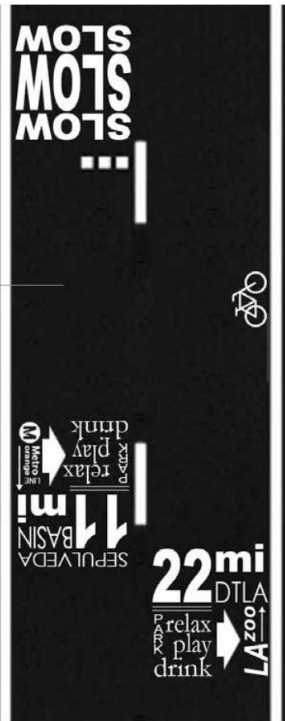


Fig 5.17 Bikeway embedded info-graphics



Existing LA River signage with local habitat and ecological information



Corten steel signage with plant species information



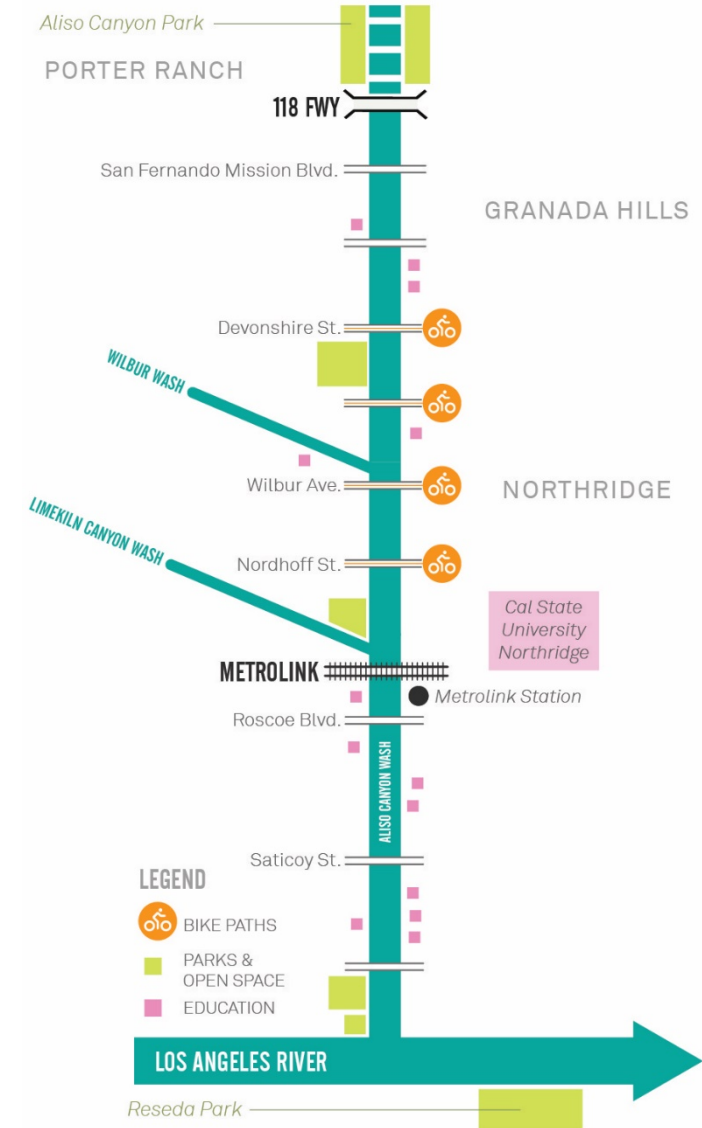
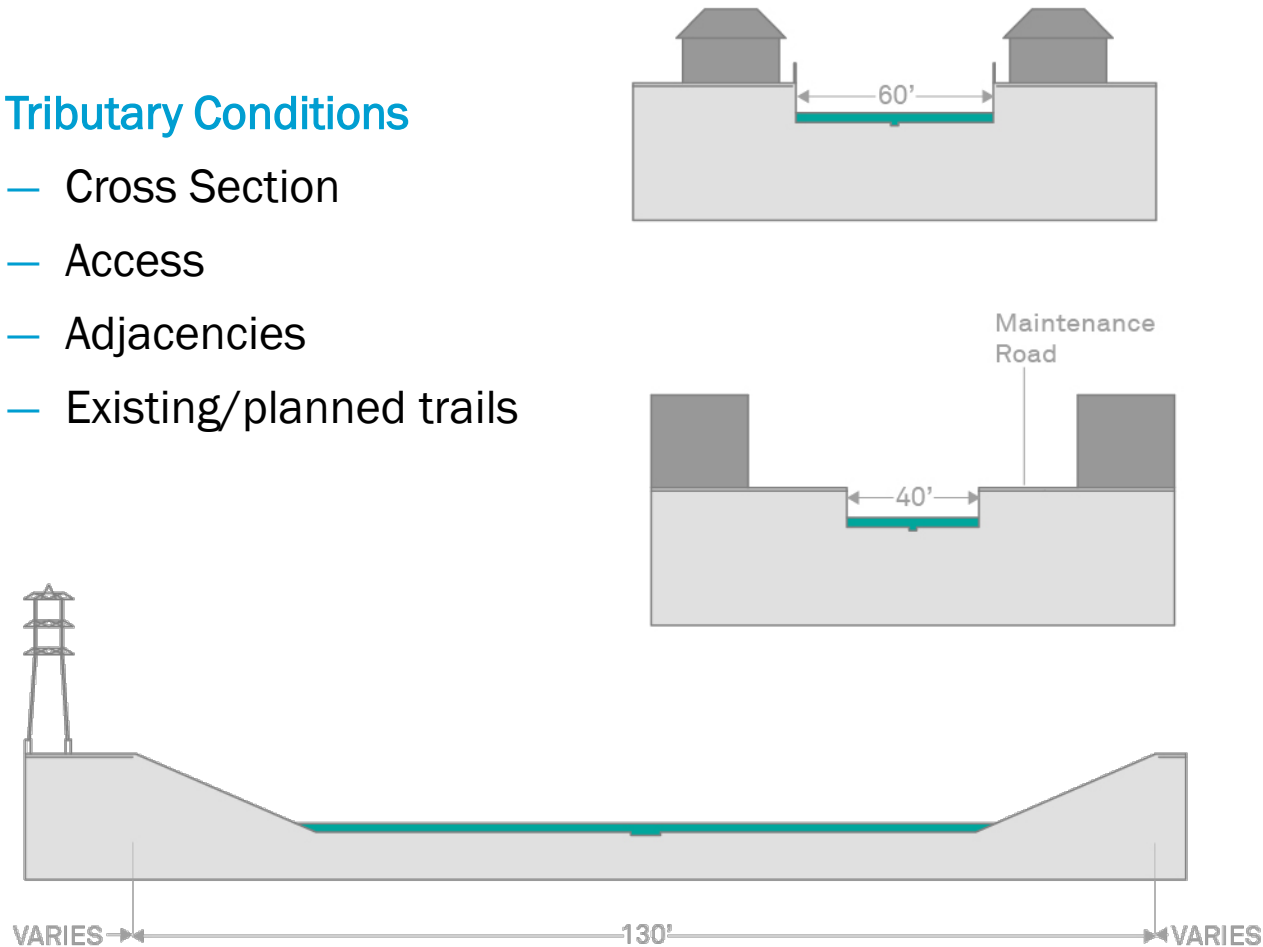
Directional signage with distance information

SOUTHERN COTTONWOOD-WILLOW RIPARIAN- BIOSWALE GARDEN									
<i>Rachilla cordifolia</i> Heart-leaved Pentstemon	<i>Achillea millefolium</i> Yarrow	<i>Mimulus cardinalis</i> Scarlet Mimulus	<i>Limonium carolinianum</i> California aster	<i>Muhlenbergia rigens</i> Desertgrass					
<i>Nassella pulchra</i> Purple needlegrass	<i>Carex crassifolia</i> California sedge	<i>Salvia spaldingii</i> Hummingbird sage	<i>Rhus virens</i> California blackberry	<i>Junonia juno</i> California butterfly					
ALLUVIAL FAN SAGE SCRUB									
<i>Artemisia californica</i> California sagebrush	<i>Dalea bicolor</i> California Poppy	<i>Dolichopus californicus</i> California hawkweed							
<i>Dalea imrayana</i> Lamb's ear	<i>Malva inaequalis</i> Cock's foot	<i>Penstemon spectabilis</i> Shrew catclaw							
COASTAL SAGE SCRUB - POLLINATOR HABITAT									
<i>Phacelia arguta</i> Lemoncello berry	<i>Dendromecon rigida</i> Bush poppy	<i>Eriogonum fasciculatum</i> California buckwheat	<i>Suaeda frutescens</i> Thick-leaved Yerba Santa						
<i>Ceanothus velutinus</i> Black sage	<i>Mimulus aurantiacus</i> California monkey flower	<i>Astragalus flexuosus</i> Narrow-leaved manzanita							
COAST LIVE OAK WOODLAND- NATIVE BIRD HABITAT									
<i>Quercus agrifolia</i> Coast Live Oak	<i>Berberis peninsularis</i> California barberry	<i>Salvia apicalis</i> White sage	<i>Baccharis scopulorum</i> Coastal sagebrush	<i>Ceanothus velutinus</i> Black sage	<i>Phacelia californica</i> California cocklebur				
<i>Ceanothus velutinus</i> California Bay Laurel	<i>Eriogonum fasciculatum</i> California buckwheat	<i>Suaeda frutescens</i> Thick-leaved Yerba Santa	<i>Larrea tridentata</i> Cholla	<i>Helianthus annuus</i> Sunflower	<i>Penstemon spectabilis</i> Shrew catclaw				

# Multi-use Greenway Development

- **Tributary Conditions**

- Cross Section
- Access
- Adjacencies
- Existing/planned trails





# Multi-use Greenway Development



## OUR APPROACH – Task 7

- Community Engagement – Branding/Web Tools/Workshops/Virtual





# Multi-use Greenway Development



## OUR APPROACH – Task 8

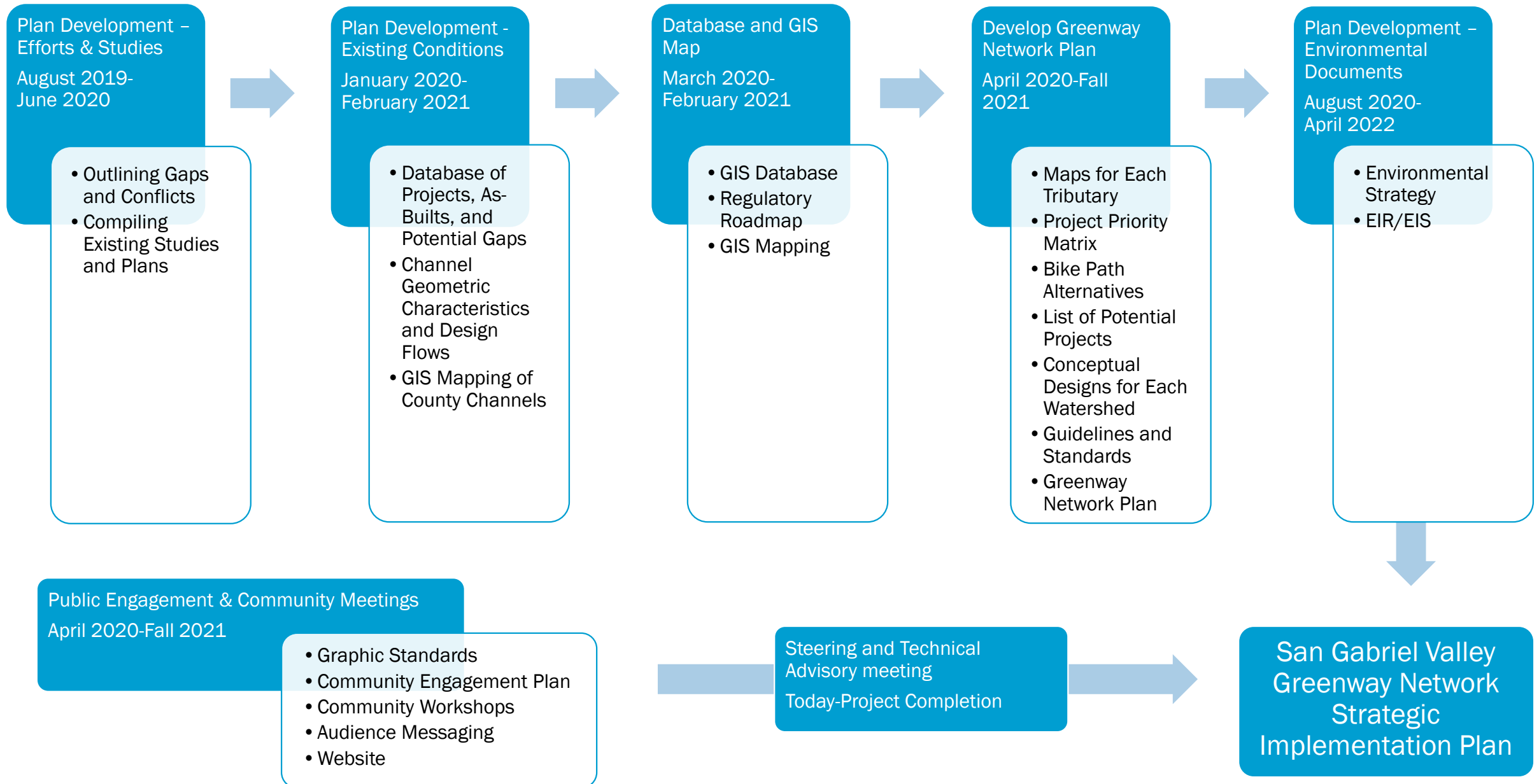


- Environmental Strategy and Roadmap
- Tiered environmental review from the Program EIR for EWMP implementation
- Draft Programmatic EIR/EIS
- Cultural resources consultation



# Project Schedule





# Virtual Engagement in the Age of COVID-19



# Community Engagement Goals



Equity in engagement, process, outcomes



Using metrics, relationships, capacity building to identify need



Ensure project outcomes reflect needs and prioritize benefits to underserved communities lacking connections to open space

# Community Engagement Process



## Three Engagement Phases





# WCA Slide

## Task 3: Plan Development – Existing Planning Efforts and Studies



# Task 3 TM: Compilation of Studies Overview



Document Review



Gap Analysis



Discussion of Gap  
Reconciliation

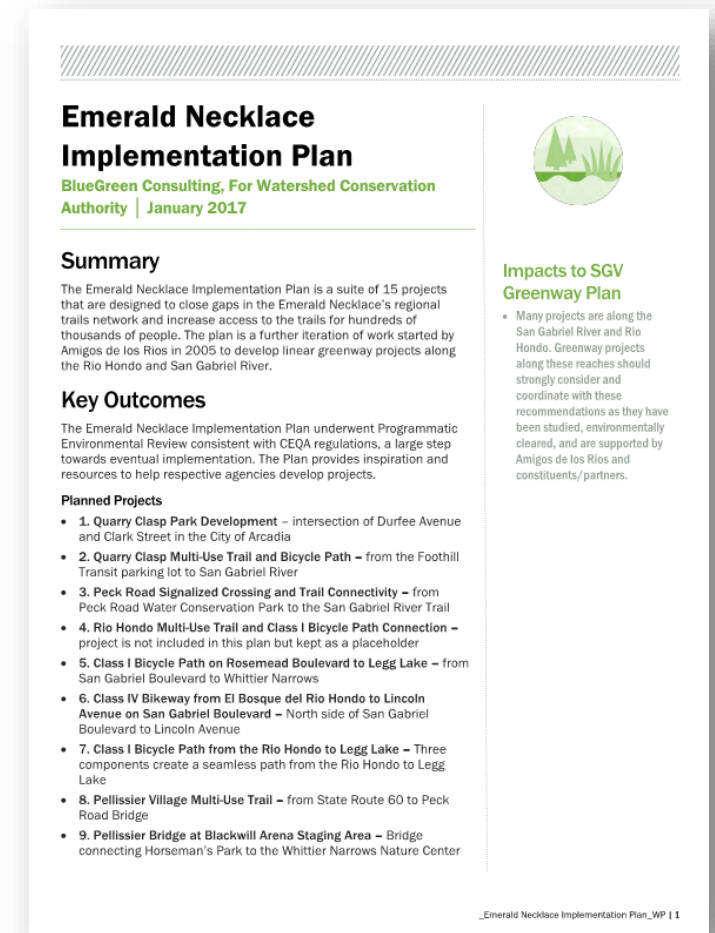


Recommendations of  
Gap Reconciliation

# Task 3 TM: Compilation of Studies Overview

## Document Review

- San Gabriel River Corridor Master Plan (Los Angeles County)
- Emerald Necklace Implementation Plan (Los Angeles County)
- Comprehensive Parks and Recreation Needs Assessment (Los Angeles County)
- Regional Trail System (Los Angeles County)
- 2012 Bicycle Master Plan (Los Angeles County)
- 2012-2035 Regional Transportation Plan (Southern California Association of Governments)
- Active Transportation Strategic Plan (Los Angeles County Metropolitan Transportation Association)
- San Gabriel Valley Greenway Network Feasibility Study (SGVCOG)
- Open Channel Condition Inspections (Los Angeles County)
- County of Los Angeles Enhances Watershed Management Programs (EWMP) Programmatic Environmental Impact Report (EIR)
- City of Los Angeles EWMP Programmatic EIR
- City of Los Angeles Ballona Creek Greenway Bacteria EIR
- Rio Hondo/San Gabriel River Revised Watershed Management Plan (rWMP)
- San Gabriel River Watershed Management Plan
- Lower San Gabriel River Watershed Management Plan
- East San Gabriel Valley Watershed Management Plan
- Upper San Gabriel River Enhanced Watershed Management Plan

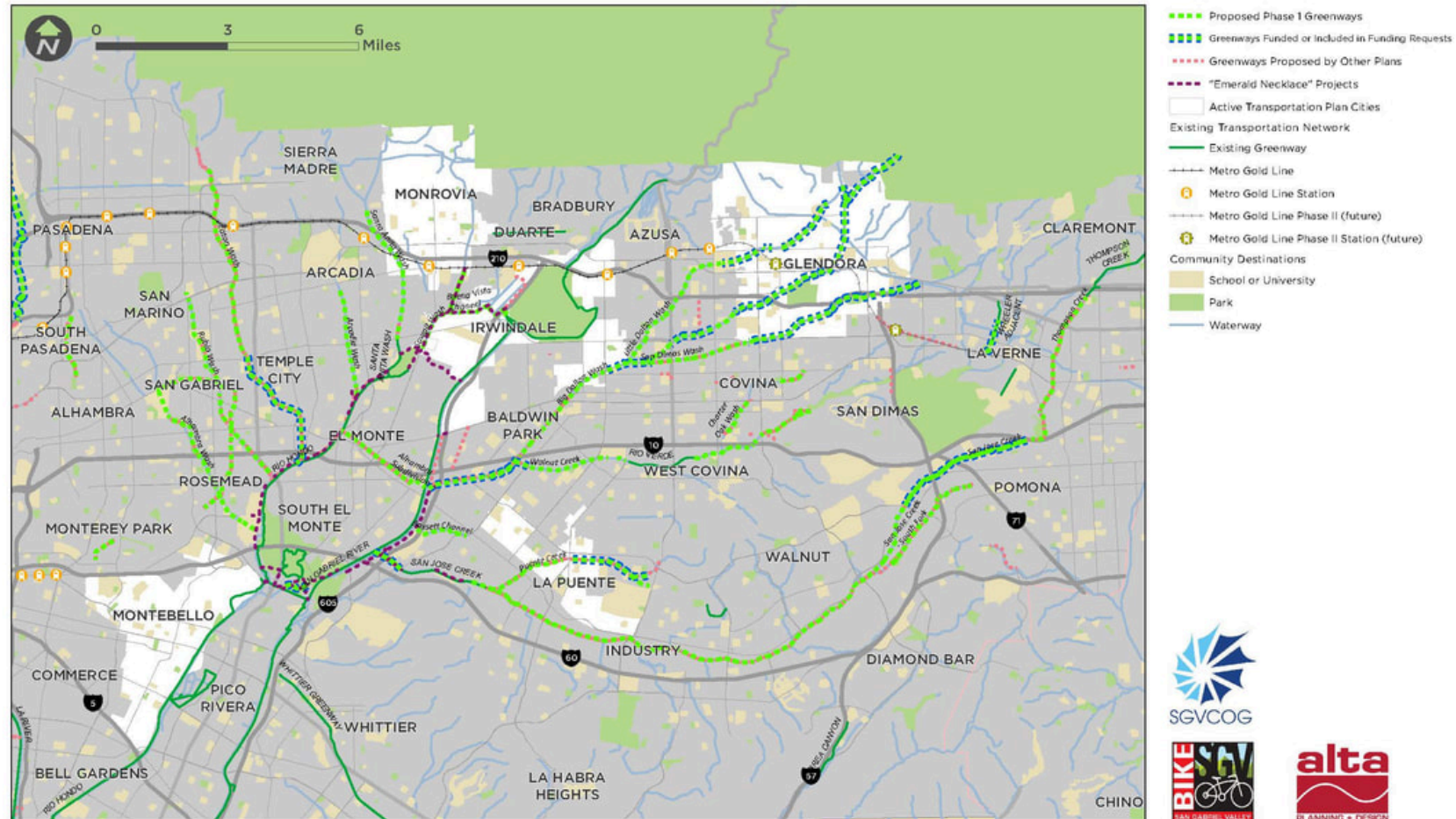




# San Gabriel Valley Regional Active Transportation Plan #ActiveSGV



## SGV Regional Greenways Study



April 2018



# LA County Parks Needs Assessment



## PARKS & OPEN SPACE INVENTORY

Four types of parks and open spaces were identified as means to categorize the facilities inventoried during the Parks Needs Assessment. This uniform categorization system ensured an “apples to apples” comparison among facilities and Study Areas. The four categories are specific to the Parks Needs Assessment, and differ from the categories used in cities and by other agencies in the County. For the inventory, specialized facilities serving the entire County or specific sub-regions, such as arboreta, amphitheaters, and wilderness parks were included in the category that covered their specific characteristics, and only if they were part of a park or open space area.



**LOCAL PARKS** are under 100 acres and contain active amenities such as athletic courts and fields, playgrounds, and swimming pools. Local parks identified in the inventory are sometimes called community parks or regional parks by the agencies that operate them. These parks are included in the analysis of all park metrics. **1,602 INVENTORIED**



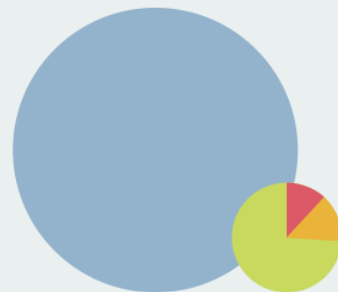
**REGIONAL RECREATION PARKS** are over 100 acres and contain active amenities such as athletic courts and fields, playgrounds, and swimming pools. Locally administered “regional parks” under 100 acres in size are not included in this category, and are included as local parks in the inventory instead. Regional Recreation Parks are included in the analysis of all park metrics, and were subject to a separate facility review process due to their large size and regional importance. **17 INVENTORIED**



**REGIONAL OPEN SPACE** includes facilities that are more than 5 acres and generally contain only passive amenities such as visitor centers, trails, picnic shelters, or restrooms. These facilities are not included in the analysis of any individual park metric, but are included in the analysis of park need. **329 INVENTORIED**



**NATURAL AREAS** are generally larger than 100 acres and contain no reported amenities. These facilities are not included in any of the needs analyses of the Parks Needs Assessment. **1,075 INVENTORIED**



- **LOCAL PARKS**  
15,723 acres
- **REGIONAL RECREATION PARKS**  
18,248 acres
- **REGIONAL OPEN SPACE**  
98,977 acres
- **NATURAL AREAS**  
768,699 acres



**1,068**  
Baseball Fields



**940**  
Basketball Courts



**424**  
Soccer Fields



**373**  
Fitness Zones



**51**  
Dog Parks



**1,190**  
Restrooms



**187**  
Gymnasiums



**218**  
Swimming Pools



**367**  
Unique Amenities\*



**1,022**  
Tennis Courts



**510**  
Multipurpose Fields



**1,452**  
Playgrounds



**96**  
Skate Parks



**1,251**  
Picnic Shelters



**518**  
Senior Centers



**90**  
Community Rec Centers



**82**  
Splash Pads

\* Unique amenities include equestrian arenas, volleyball courts, amphitheaters, community gardens, concession stands, gazebos, etc.

# Task 3 TM: Compilation of Studies Overview

- Design Standards
- and Guidelines

Relevant Standards		
Reference Document	Mon-Yr	Relevant Design Guidelines and Standards
San Gabriel River Corridor Master Plan (Los Angeles County)	Jun-06	Wayfinding and Signage, Branding and Identity, Maintenance, Safety and Security, Materials (for aesthetics), Forms (for aesthetics), Colors (for aesthetics), Native Plants (for aesthetics). References to the following for Guidelines: Los Angeles River Design Guidelines.
Emerald Necklace Implementation Plan (Los Angeles County)	Jan-17	References the following for guidelines: County of Los Angeles Department of Parks and Recreation Guidelines, County of Los Angeles Parks and Recreation Signage Guidelines, County of Los Angeles Trails Manual, County of Los Angeles Equestrian Design Guidelines, Caltrans Highway Design Manual, American Association of State Highway and Transportation Officials (AASHTO) Guidelines, Manual of Uniform Traffic Control Guidelines, and Emerald Necklace
Comprehensive Parks and Recreation Needs Assessment (Los Angeles County)	May-16	N/A
Regional Trail System (Los Angeles County)	Oct-16	N/A
2012 Bicycle Master Plan (Los Angeles County)	Mar-12	Including: AASHTO Policy on Geometric Design of Streets and Highways, AASHTO Guide for the Development of Bicycle Facilities, Manual on Uniform Traffic Control Devices (MUTCD), Public Rights-of-Way Accessibility Guidelines (PROWAG), California Manual on Uniform Traffic Control Devices (CA MUTCD) Part 9: Traffic Controls for Bicycle Facilities, California Highway Design Manual (HDM) Chapter 1000: Bikeway Planning and Design, CA DOT Pedestrian and Bicycle Facilities in California: A Technical Reference and Technology Transfer Synthesis for Caltrans Planners and Engineers, Los Angeles River Master Plan Landscaping Guidelines and Plant Palettes.
2012-2035 Regional Transportation Plan (Southern California Association of Governments)	Apr-12	References the following for guidelines: Highway Design Manual, Deputy Directive on Accommodating Non-motorized Transportation (DD64), Director's Policy on Context Sensitive Solutions (DP22), Main Streets: Flexibility in Design and Operations Assembly Concurrent Resolution 211, California Supplement to the MUTCD, California Blueprint for Bicycling and Walking, California Bicycle Transportation Act, California Vehicle Code, California Streets and Highway Code, and California Access Compliance Reference Manual.
Active Transportation Strategic Plan (Los Angeles County Metropolitan Transportation Authority)	Apr-16	Policy on Geometric Design of Streets and Highways, AASHTO Guide for the Development of Bicycle Facilities, National Association of City Transportation Officials (NACTO) Urban Design Guide, NACTO Urban Street Design Guide, California Manual on Uniform Traffic Control Devices (CA MUTCD), California Highway Design Manual (HDM), Complete Intersections: A Guide to Reconstructing Intersections and Interchanges for Bicyclists and Pedestrians, Caltrans Design Information Bulletin 89: Class IV Bikeway Guidance, Assembly Bill No. 1096, The Caltrans Memo: Design Flexibility in Multimodal Design.
San Gabriel Valley Greenway Network Feasibility Study (San Gabriel Valley Council of Governments)	Jun-16	design guidelines including: AASHTO Guidelines, National Association of City Transportation Officials (NACTO) Urban Street Design, AASHTO's Policy on Geometric Design of Highways and Streets, FHWA's Small Town and Rural Multimodal Networks Report, California Manual on Uniform Traffic Control Devices (CA MUTCD), California Highway Design Manual (HDM), Complete Intersections: A Guide to Reconstructing Intersections and Interchanges for Bicyclists and Pedestrians, Main Street, California: A Guide for Improving Community and Transportations Vitality, and The Caltrans Memo: Design Flexibility in Multimodal Design.
Open Channel Condition Inspections (Los Angeles County)	Varied	N/A
County of Los Angeles EWMP Programmatic EIR (Los Angeles County)	Apr-15	Aesthetic Guidance to follow local zoning codes and applicable design guidelines to minimize features contrast with neighboring development.
City of Los Angeles EWMP Programmatic EIR (City of Los Angeles)	May-15	Aesthetic Guidance to follow local zoning codes and applicable design guidelines to minimize features contrast with neighboring development.
City of Los Angeles Ballona Creek Greenway Bacteria EIR (City of Los Angeles)	Apr-18	N/A
Rio Hondo/San Gabriel River Enhanced Watershed Management Plan (City of Los Angeles)	Apr-16	N/A
East San Gabriel Valley Watershed Management Plan	Jun-15	N/A
Lower San Gabriel River Watershed Management Plan	Jun-15	N/A
Upper San Gabriel River Enhanced Watershed Management Plan	Jan-16	N/A

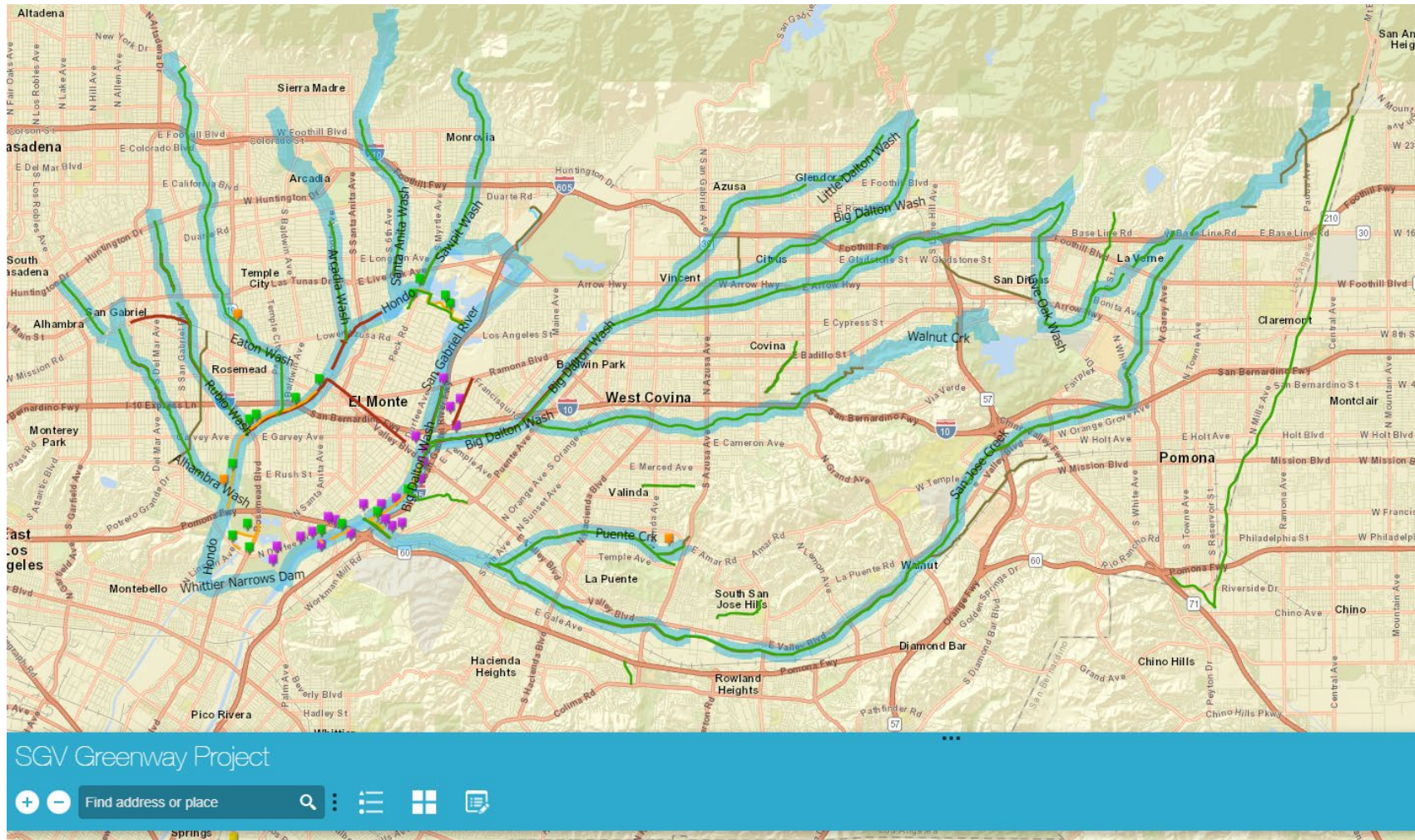
# Task 3 TM: Compilation of Studies Overview

- Design Standards and Guidelines Gaps and Overlaps

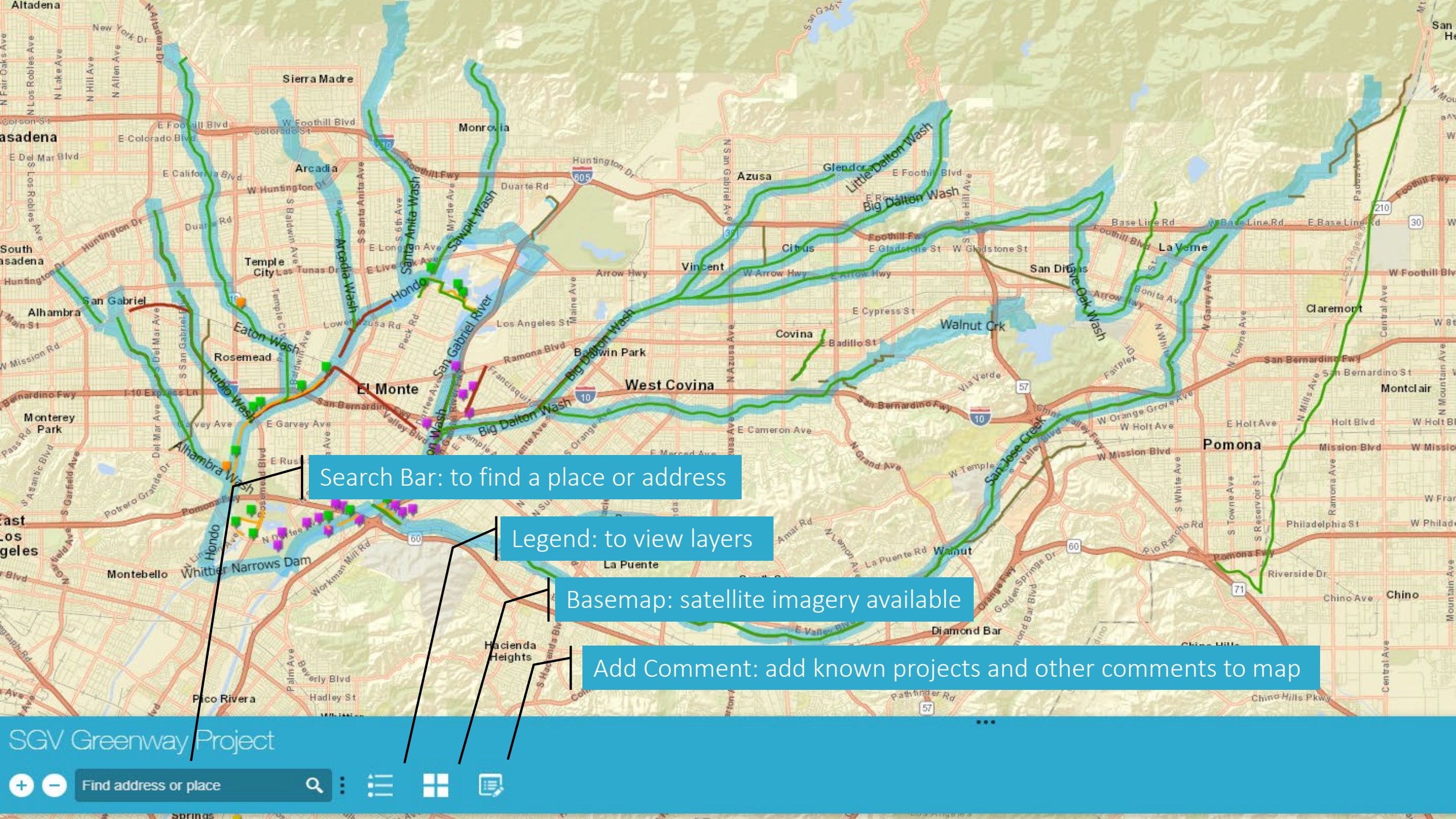
Reference Document	Wayfinding Standards								Bicycle Guide Signs	
	Wayfinding Colors	Community Wayfinding Standards	Map Kiosks Per ADA Standards	Pavement Markings	Emerald Necklace Signage Guidelines	Branding and Identity (to be included in signage)	Sign Programming (messages that appear on signage)	Bike Route Signage and Pavement Markings	California Manual on Uniform Traffic Control Devices (CA MUTCD)	Federal Highway Administration Manual on Uniform Traffic Control Devices (FHWA MUTCD)
San Gabriel Valley Greenway Network Feasibility Study (SGVCOG)	•	•	•	•		•	•		•	•
San Gabriel River Corridor Master Plan						•				
Emerald Necklace Implementation Plan (to follow Bicycle MP)					•				•	•
2012 Bicycle Master Plan	•							•	•	•
Metro Active Transportation Strategic Plan									•	
2012-2035 Regional Transportation Plan									•	



# Web App Introduction







Search Bar: to find a place or address

Legend: to view layers

Basemap: satellite imagery available

Add Comment: add known projects and other comments to map

SGV Greenway Project

Find address or place





Edit



Select a template to create features

Feature layers

All

Search templates

Make a Comment! (Point)



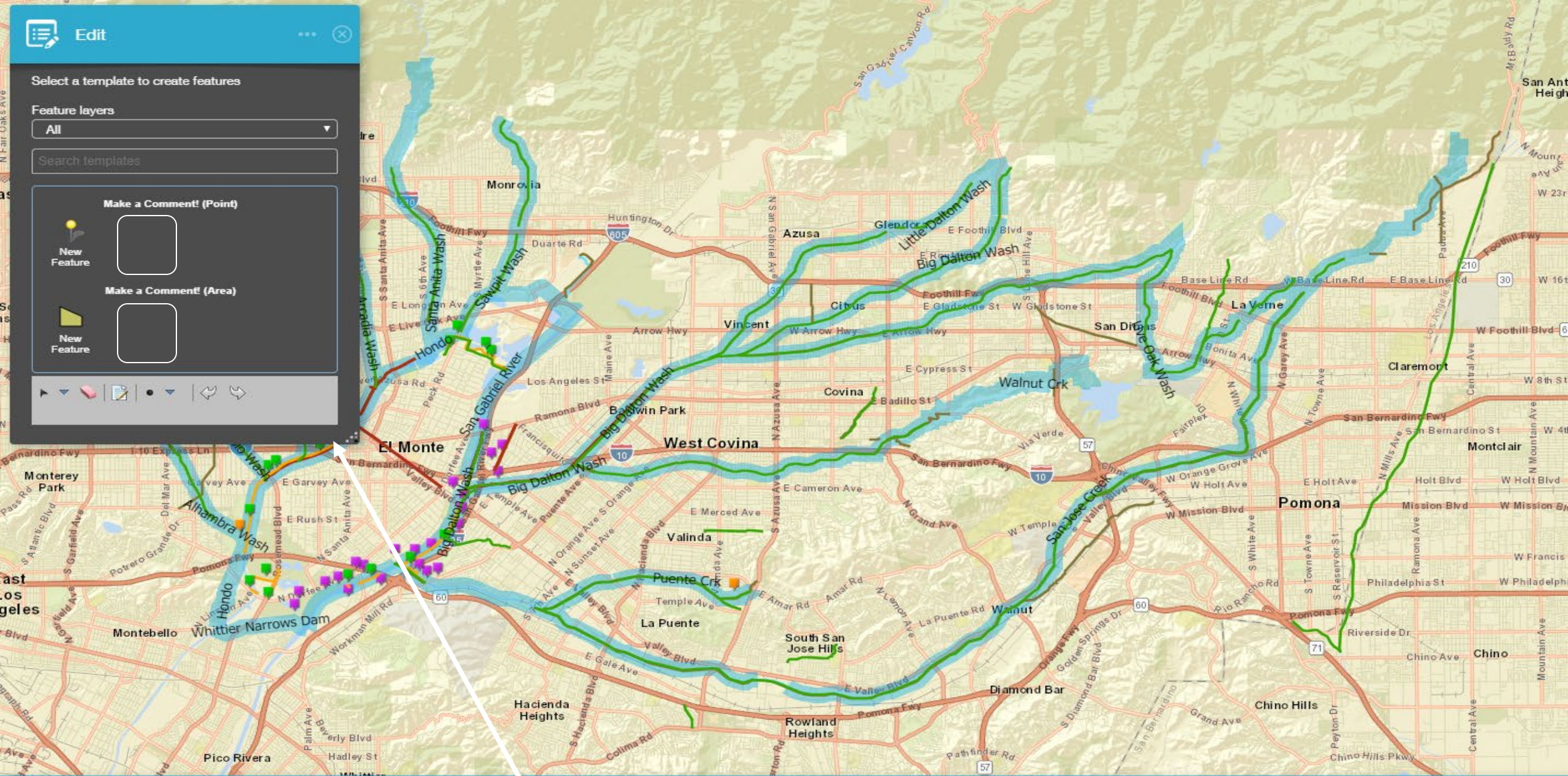
New Feature



Make a Comment! (Area)



New Feature



SGV Greenway Project



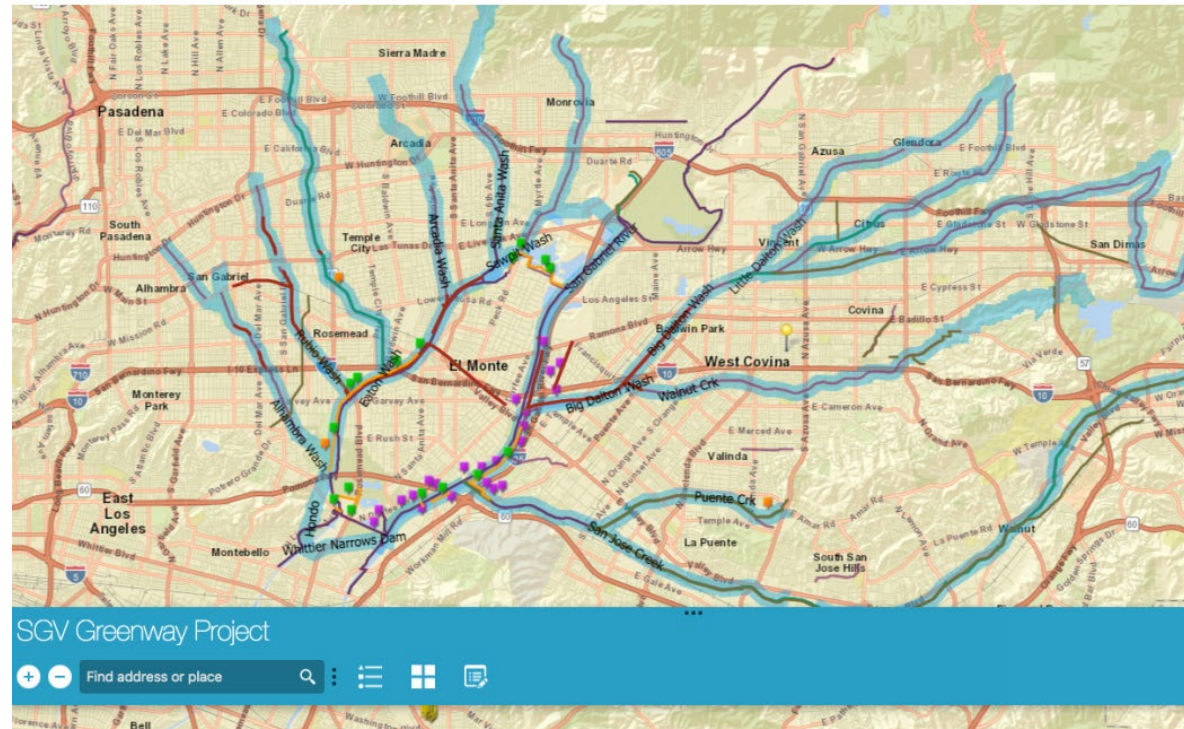
Find address or place





# Web App Introduction

- Live Demo
- <https://pace.maps.arcgis.com/apps/webappviewer/index.html?id=ad34512a41444372838eb37ca5de1dce>

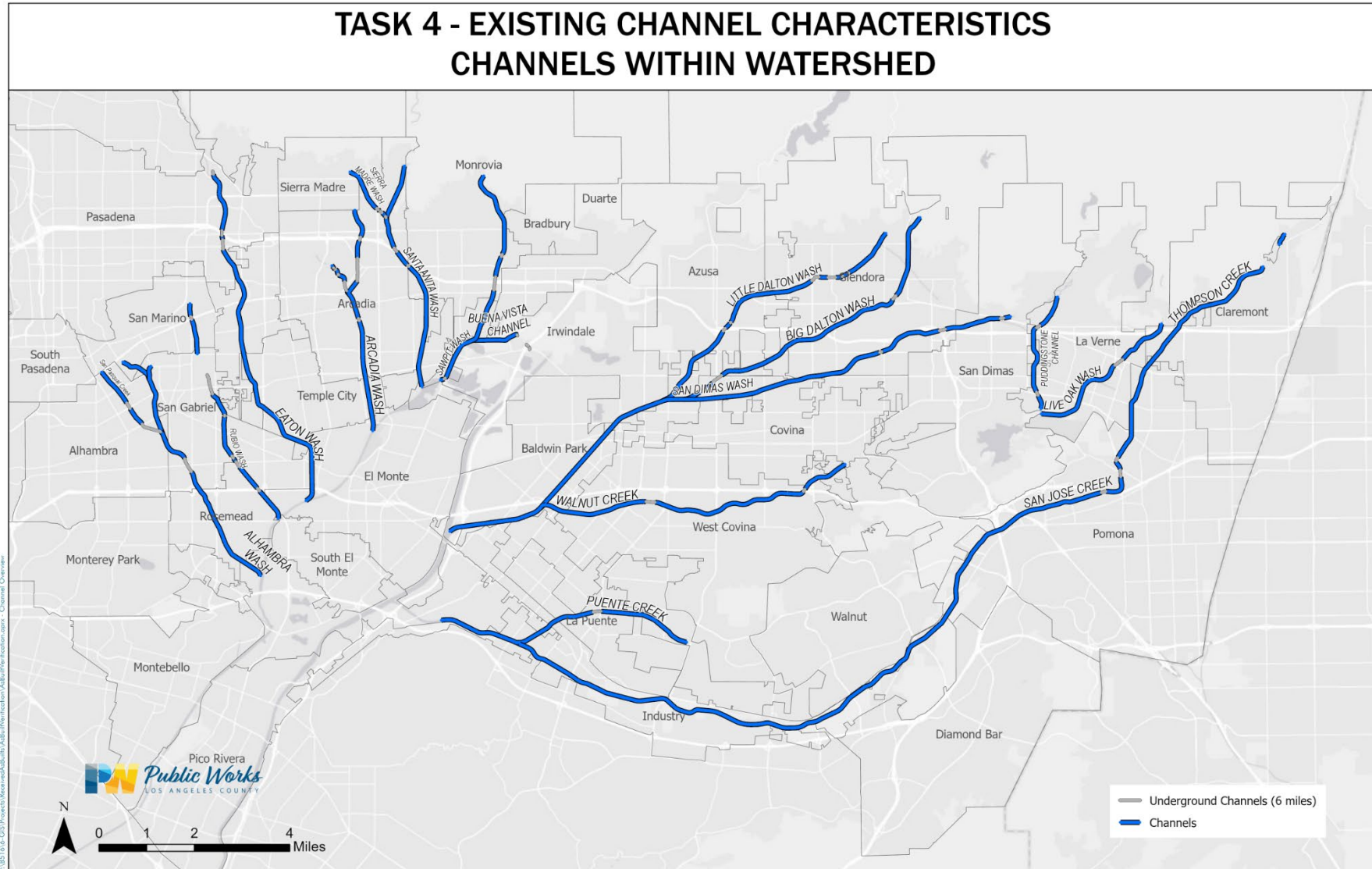




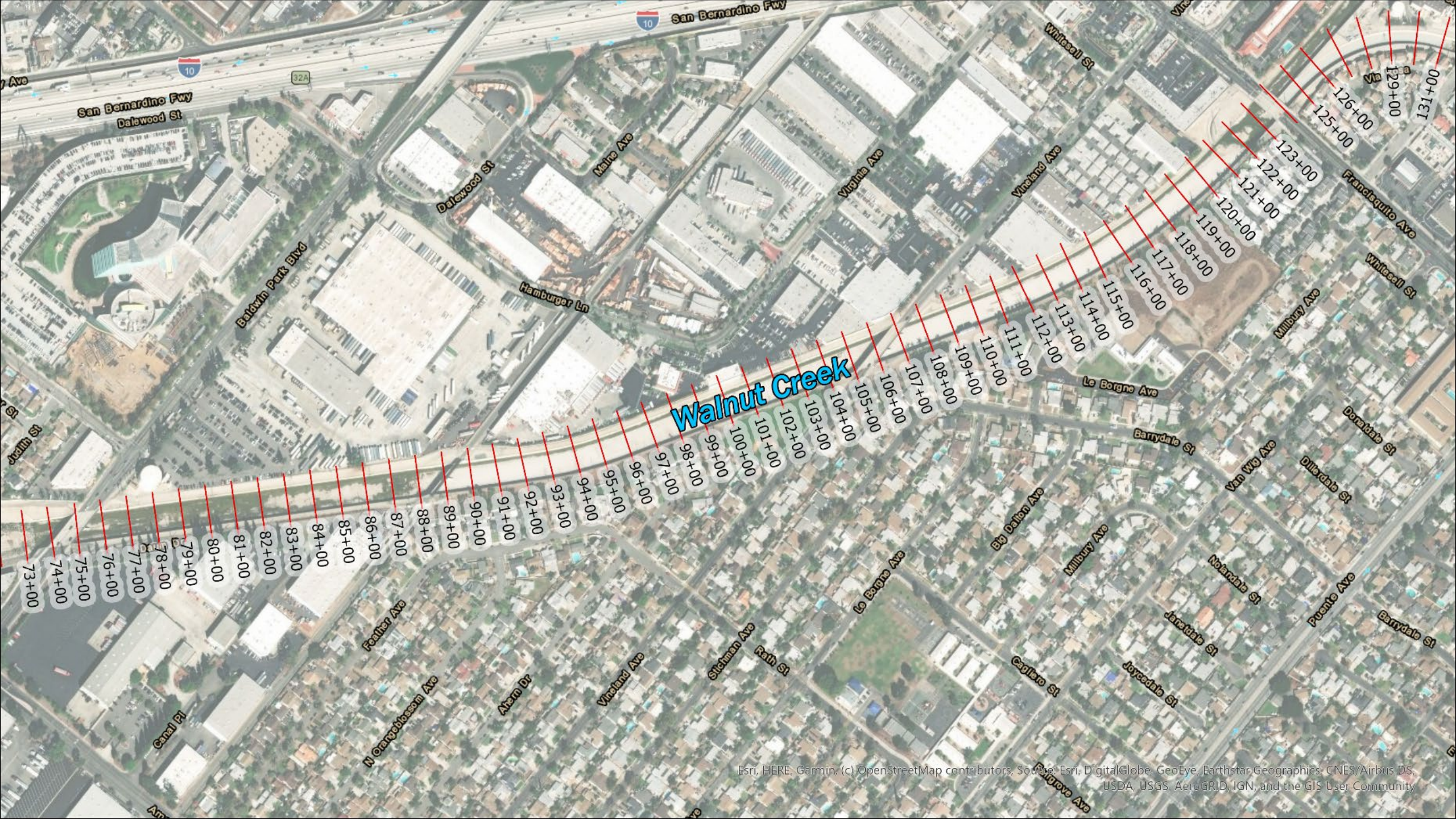
# Task 4: Plan Development – Existing Conditions



## Task 4: Plan Development – Existing Conditions Update



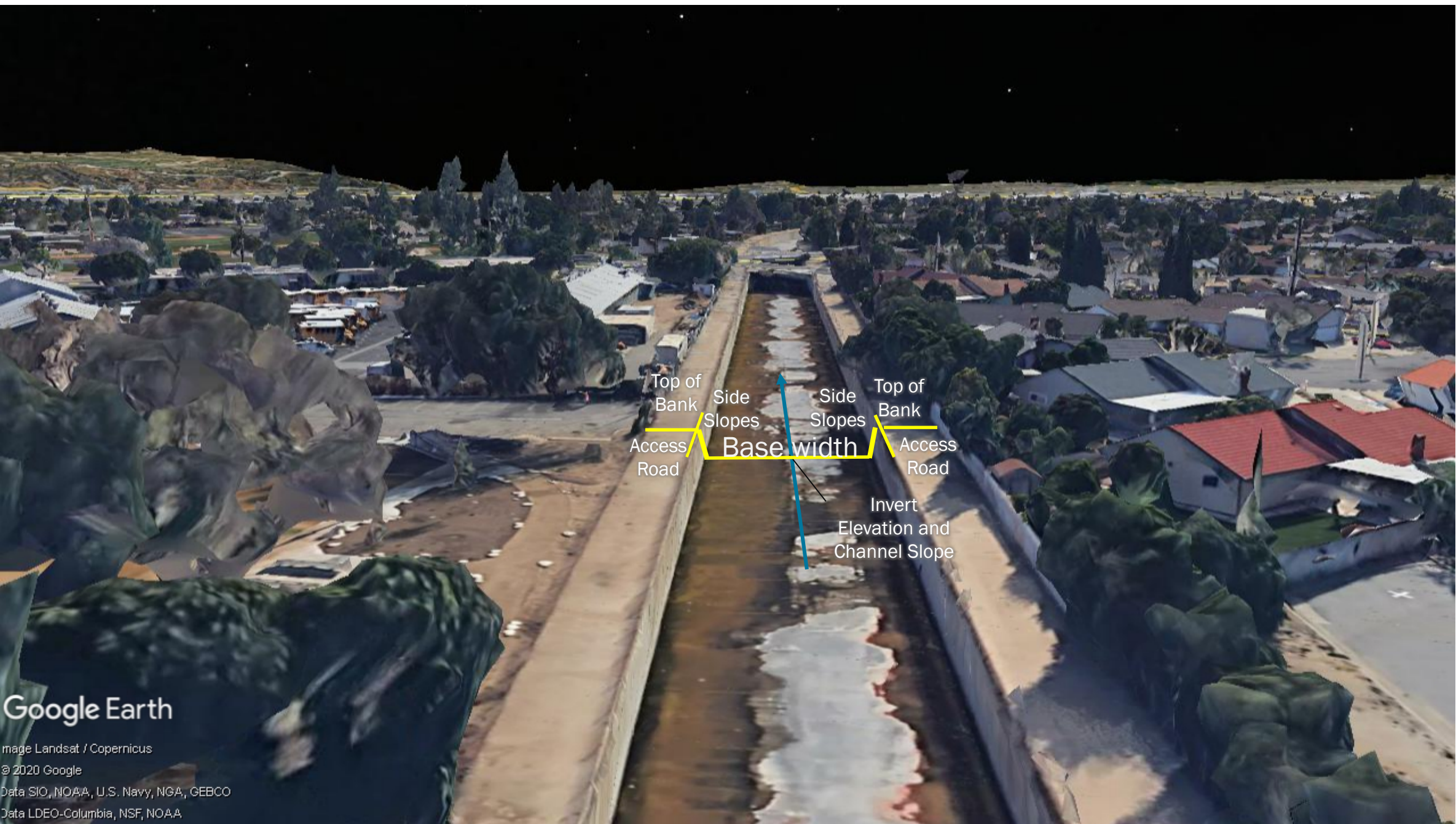




**Walnut Creek**

- 73+00
- 74+00
- 75+00
- 76+00
- 77+00
- 78+00
- 79+00
- 80+00
- 81+00
- 82+00
- 83+00
- 84+00
- 85+00
- 86+00
- 87+00
- 88+00
- 89+00
- 90+00
- 91+00
- 92+00
- 93+00
- 94+00
- 95+00
- 96+00
- 97+00
- 98+00
- 99+00
- 100+00
- 101+00
- 102+00
- 103+00
- 104+00
- 105+00
- 106+00
- 107+00
- 108+00
- 109+00
- 110+00
- 111+00
- 112+00
- 113+00
- 114+00
- 115+00
- 116+00
- 117+00
- 118+00
- 119+00
- 120+00
- 121+00
- 122+00
- 123+00
- 125+00
- 126+00
- 129+00
- 131+00





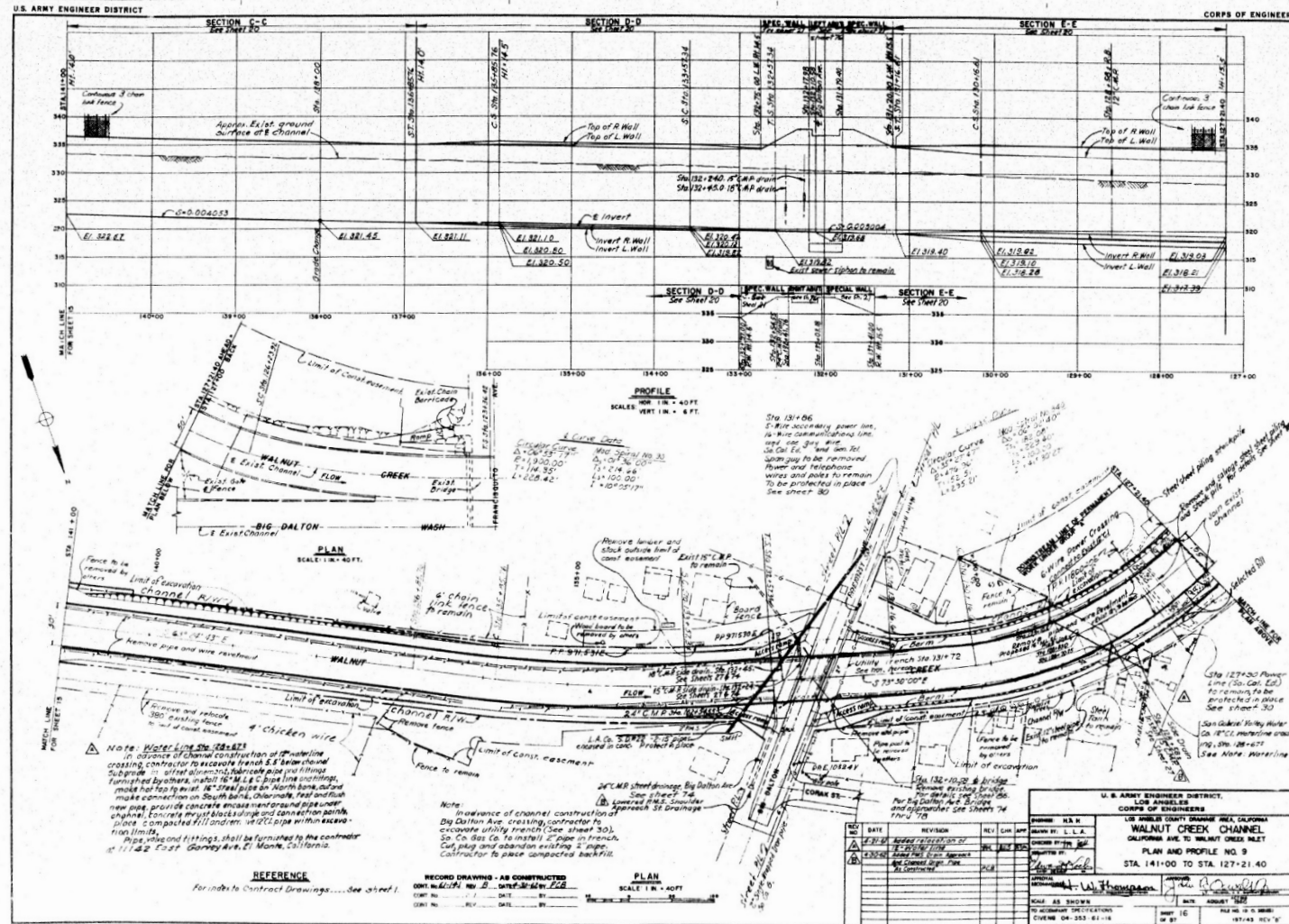
Google Earth

Image Landsat / Copernicus  
© 2020 Google  
Data SIO, NOAA, U.S. Navy, NGA, GEBCO  
Data LDEO-Columbia, NSF, NOAA



# Task 4: Plan Development – Existing Conditions Update

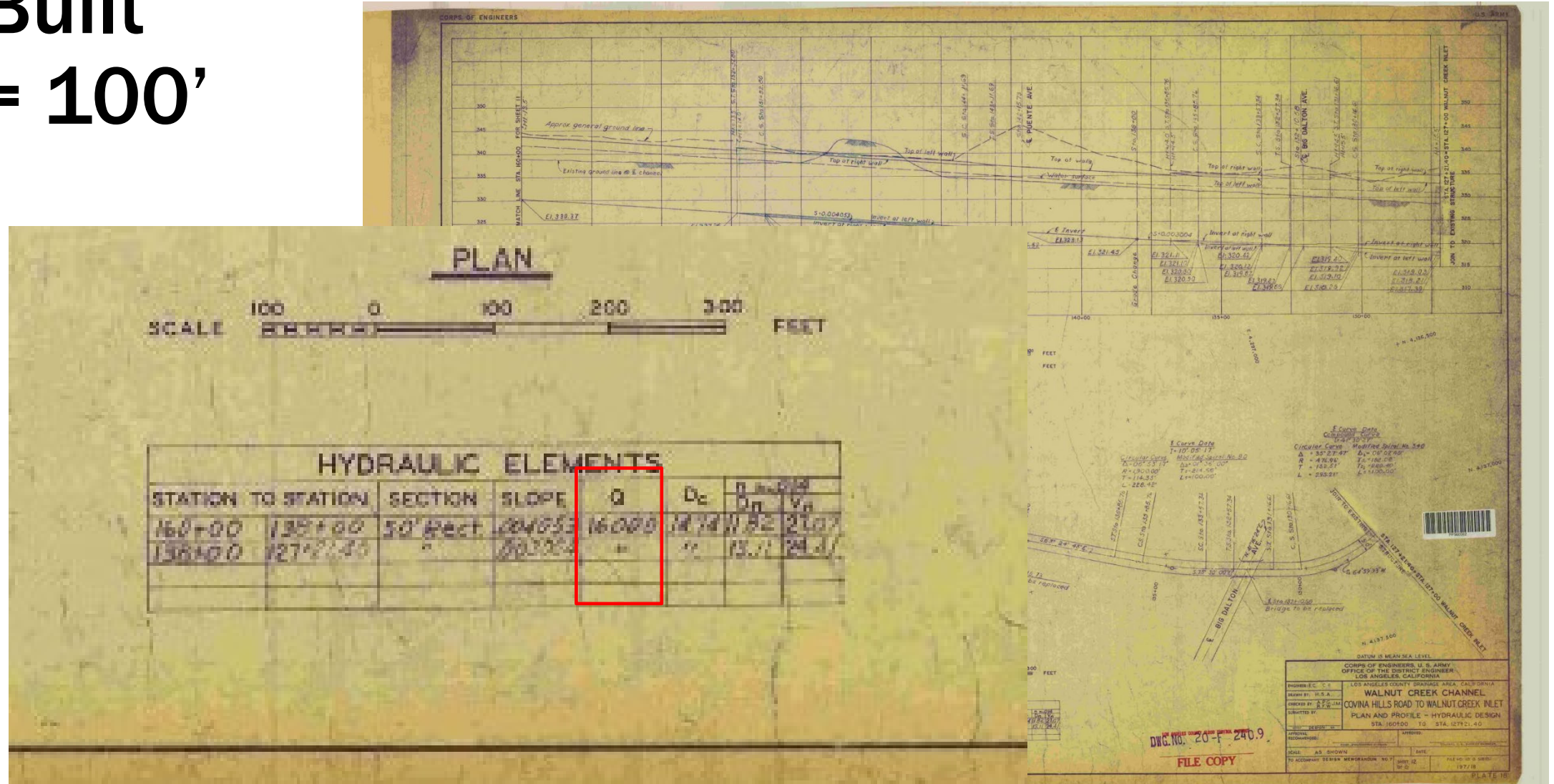
As-Built  
1" = 40'



# Task 4: Plan Development – Existing Conditions Update

## As-Built

### 1" = 100'



# Web Application Demo

- As-Built Database Input Application
- As-Built Status Web Application



AS-BUILT SELECTION

☒ STA288\_24ToSTA297\_78\_1960\_Pf533331.jpg

☒ STA276\_00ToSTA288\_24\_1960\_Pf533332.jpg

☒ STA263\_00ToSTA276\_00\_1960\_Pf533333.jpg

☒ STA260\_00ToSTA263\_00\_1960\_Pf533334.jpg

☒ STA236\_00ToSTA260\_00\_1960\_Pf533235.jpg

☒ STA222\_00ToSTA236\_00\_1960\_Pf533236.jpg

☒ STA208\_34ToSTA222\_00\_1960\_Pf533237.jpg

☒ STA195\_00ToSTA208\_34\_1960\_Pf533238.jpg

☒ STA182\_00ToSTA195\_00\_1960\_Pf533239.jpg

☒ STA169\_00ToSTA182\_00\_1960\_Pf533240.jpg

☒ STA155\_00ToSTA169\_00\_1960\_Pf533241.jpg

☒ STA141\_00ToSTA155\_00\_1960\_Pf533242.jpg

☐ STA127\_21ToSTA141\_00\_1960\_Pf533243.jpg

Select All

Deselect All

Channel Selection: Walnut

Toggle Cross Sections

Toggle Centerline

Toggle Aerial

WALNUT CREEK

CROSS SECTION

Q100 (CFS)

MATERIAL / MANNINGS

SIDE MATERIAL

BOTTOM MATERIAL

MANNINGS

GEOMETRY

BASE WIDTH

INVERT ELEVATION

LEFT BANK SLOPE

:1

CHANNEL SLOPE

RIGHT BANK SLOPE

:1

TOP OF BANK

LEFT ELEVATION

RIGHT ELEVATION

WIDTH

WATER SURFACE ELEVATION

RIGHT OF WAY

LEFT DISTANCE TO CENTERLINE

RIGHT DISTANCE TO CENTERLINE

TOTAL WIDTH

ACCESS ROAD / FENCE

WIDTH

ELEVATION

TYPE

FENCE

Save Section Data

0.6 mi

City of West Covina, County of Los Angeles, Bureau of Land Management, Esri, HERE, Garmin, INCREMENT P, USGS, METI/NASA, EPA, USDA

Powered by Esri



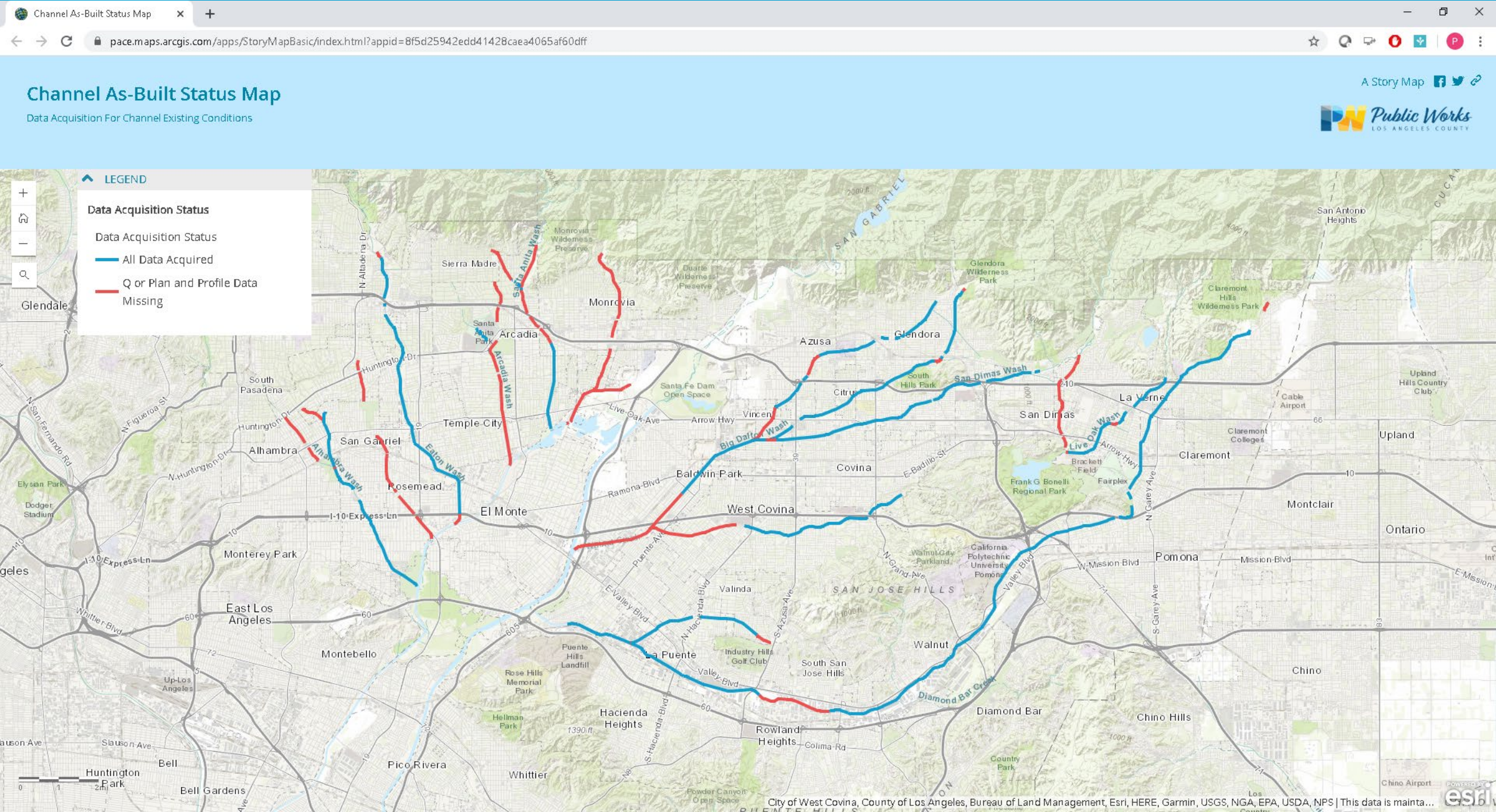
This map displays the status of stormwater infrastructure across various cities in Los Angeles County. The infrastructure is categorized by its Q Data Status and whether a plan and profile are available.

Category	Miles
Q Available	89 Miles
No Q data Available	10 Miles
Plan and Profile Available (Yes)	73 Miles
Data Unavailable	26 Miles
Underground Channels	6 miles

The map includes labels for numerous cities and specific waterways, such as Pasadena, San Marino, Alhambra, Rosemead, El Monte, South El Monte, Montebello, Pico Rivera, Industry, Diamond Bar, Walnut, West Covina, Covina, San Dimas, La Verne, Claremont, Pomona, San Gabriel, Temple City, Arcadia, Sierra Madre, Monrovia, Duarte, Bradbury, Azusa, Glendora, Irwindale, Baldwin Park, and San Jose Creek. Specific waterways labeled include SERRANO WASH, SANTA ANITA WASH, BUENA VISTA CHANNEL, SAN JUAN WASH, EATON WASH, ALHAMBRA WASH, RANCHO WASH, LITTLE DALTON WASH, BIG DALTON WASH, SAN DIMAS WASH, WALNUT CREEK, PUENTE CREEK, LIVE OAK WASH, THOMPSON CREEK, and PAIDUNGSTONE CHANNEL.

P:\B516\6-GIS\Projects\ReceivedAsBuilt\AsBuiltVerification\aprx - As Built Data Entry Status Plan and Profile1







# Next Steps

Project Team to email:

- SC KO meeting summary
- Scope of Work
- SGV Greenway SC Protocols and Operating Principles
- Community Engagement Plan
- Task 3 Draft TM for SC feedback regarding studies/projects
- Next SC meeting will be on May 21, 2020 via MS Teams





Thank you. **Questions?**