

# The San Gabriel Valley Greenway Network Strategic Implementation Plan

## A PATH FORWARD

### Mobility, recreation, and open spaces for the San Gabriel Valley

The San Gabriel Valley Greenway Network (SGV Greenway) Plan will help transform the existing watersheds (Creeks, Rivers, and Washes) into a modernized greenway network, providing residents with 130 miles of bike paths, trails, parks and open space. Established in 2017 by a Los Angeles County Board of Supervisors resolution to update these waterways and activate miles of underutilized rights-of-way into an interconnected network, the SGV Greenway will connect communities and improve access to open space and active recreation along the Rio Hondo and San Gabriel River watershed.

### Key goals



**IMPROVE RECREATION AND MOBILITY**  
opportunities for all abilities.



**INCREASE ACTIVE TRANSPORTATION**  
options to help reduce daily vehicle miles traveled (VMT).



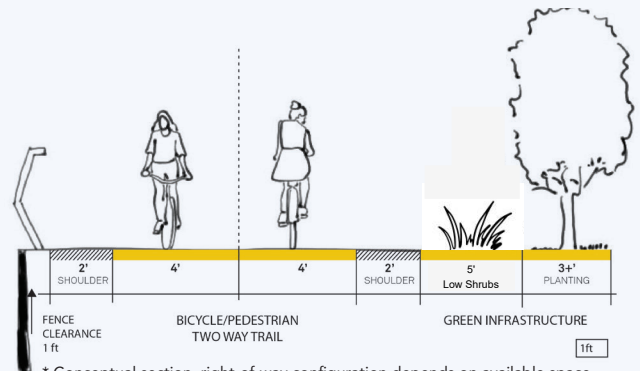
**BOLSTER EQUITY** by improving safe access to recreation, jobs, schools, and shopping.



**EXPAND ENVIRONMENTAL BENEFITS**  
through added green spaces that improve stormwater capture.



**CONNECT TO EXISTING GREENWAYS**  
and bike lanes, and build upon previous and existing projects.



\* Conceptual section, right-of-way configuration depends on available space.  
\*\*The Greenway may include equestrian usage where appropriate.



RIO HONDO BIKEWAY



SANTA FE DAM RECREATION AREA

**Share your thoughts now!**

Use the QR code or go to [SGVGreenway.org](https://sgvgreenway.org) to view and comment on the draft Plan! To contact someone about technical matters or additional planning issues please email:

[sgvgreenway@pw.lacounty.gov](mailto:sgvgreenway@pw.lacounty.gov)





## Community benefits



**Regional connections:** A regional, interconnected network creates options for people to get around without having to depend on cars.



**Environmental resiliency:** Protecting our watershed helps create a resilient and healthy environment and provides opportunities for environmental education and stewardship.

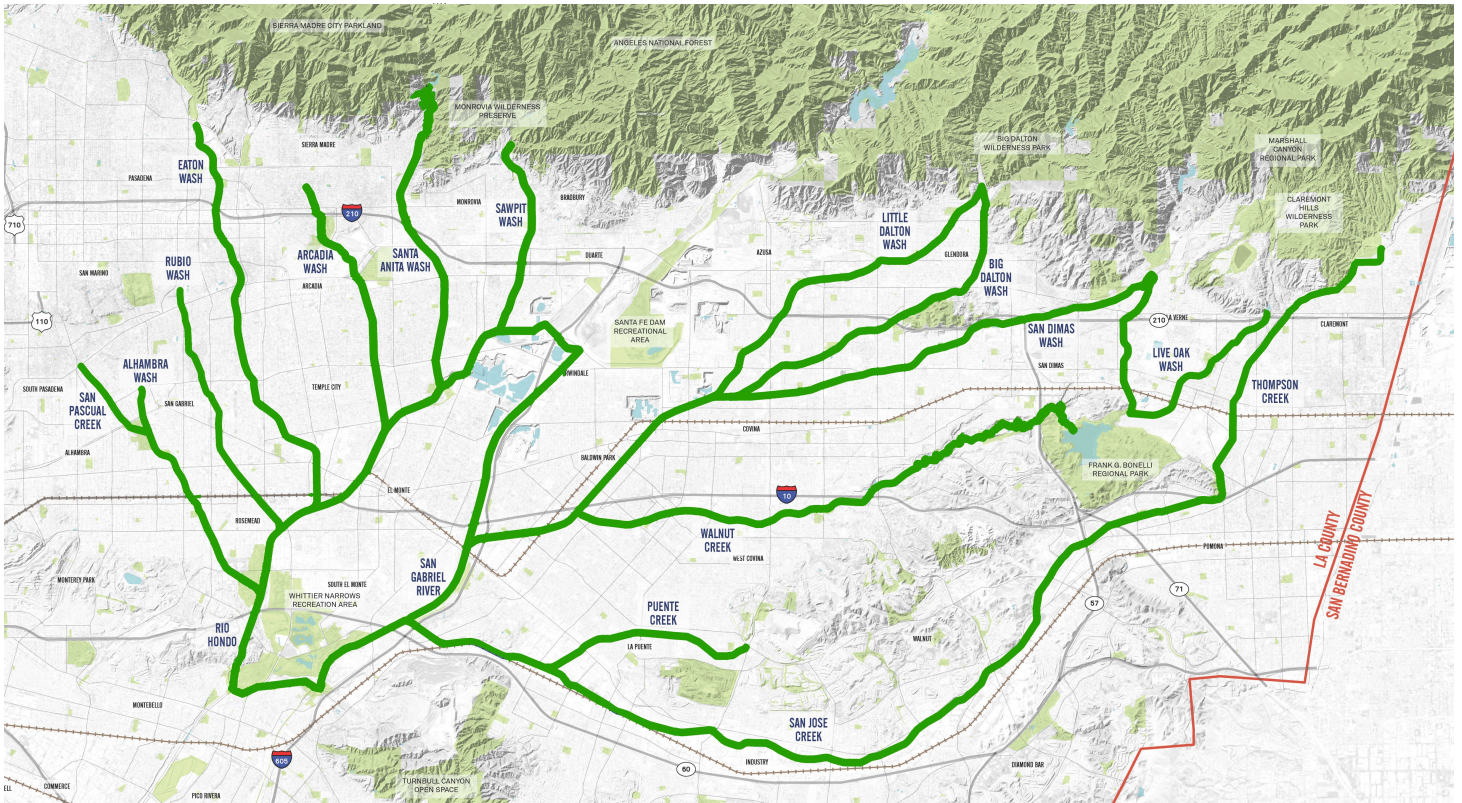


**Personal and community health:** Outdoor socializing, recreational activities, community events, engaging with nature, and other activities can improve the physical and mental health of all residents.



**Expanded local equity:** Enhancing the greenway network helps bolster access by traditionally under-resourced communities to open space, recreation and exercise, and improved active and low cost transportation options.

## Greenway network



## Implementation

The SGV Greenway Plan will introduce several recommended types of projects based upon land and watershed access and community preferences. As an implementation plan, the SGV Greenway Plan will identify reaches with the most regional benefit and will include a list of shovel-ready projects that meet specific criteria. Although this plan will not provide access to specific funding sources for implementation, it will help set up reaches for future consideration with supportive analysis. Additional areas and other less-ready segments will also be identified for communities that want to develop a future greenway project.

