



March 9, 2022

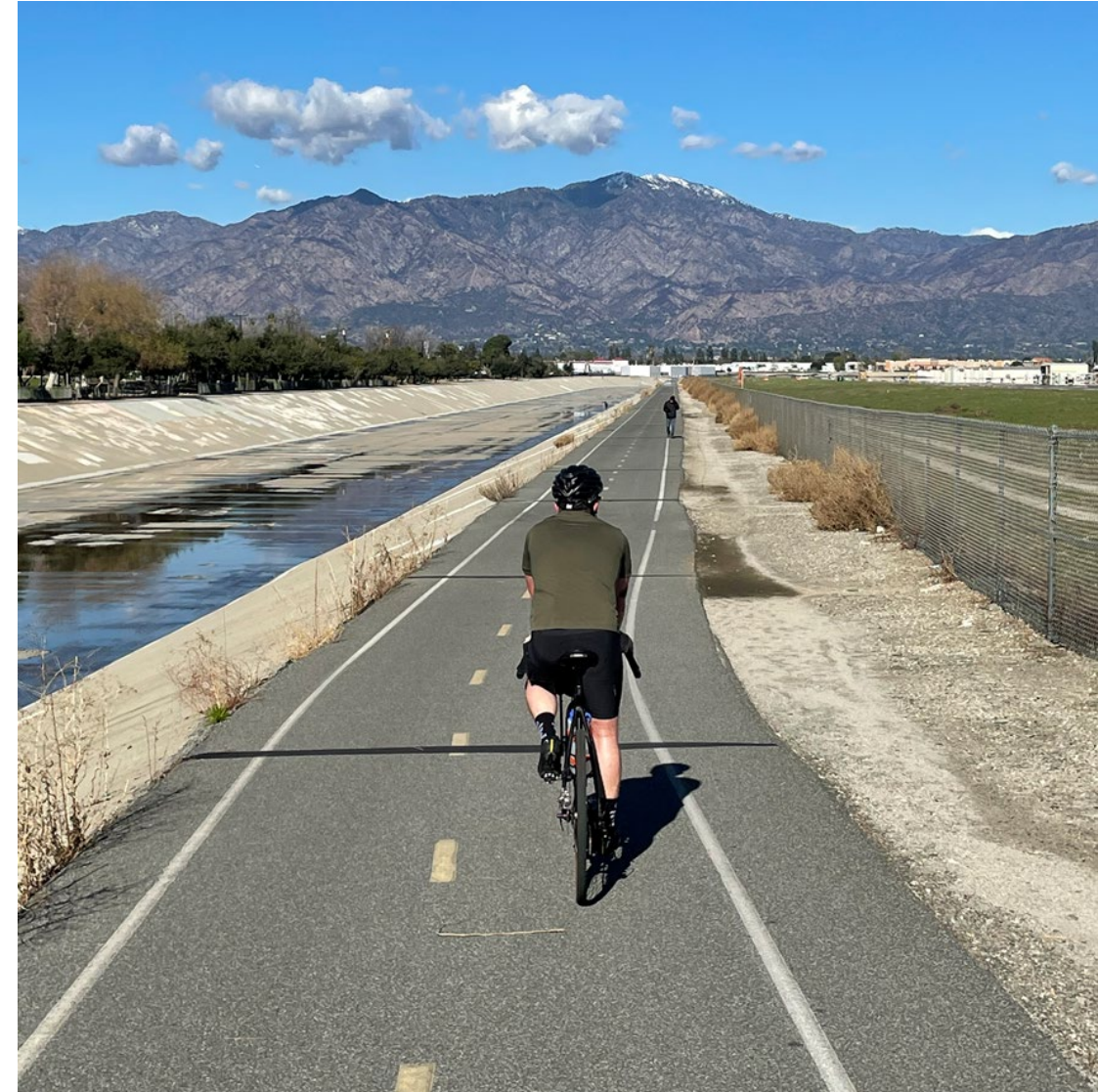
The San Gabriel Valley Greenway Network Strategic Implementation Plan



Welcome



- Agenda
 - Introduction
 - Schedule Update
 - Community Engagement Update
 - SGVGN Plan Update
 - Bike Path Alignments Overview
 - Project Components Overview
 - Small Group Discussion
 - Next Steps



Schedule Update





Plan Development – Efforts & Studies

Aug 2019 – Jul 2020

- Existing Studies & Plan Compilation

Plan Development - Existing Conditions

Jan 2020 – Jun 2022

- Database of Projects, As-Builts, and Potential Gaps
- Channel Geometric Characteristics and Design Flows
- County Channels GIS mapping

Database & GIS Maps

Apr 2020 – Nov 2021

- GIS Database
- Regulatory Roadmap
- GIS Mapping

Develop Greenway Network Plan

Apr 2020 – Summer 2022

- Tributary Maps
- Opportunities & Constraints Diagrams
- Project Priority Matrix
- Bike Path Alternatives
- Potential Project Components
- Conceptual Designs
- Guidelines & Standards
- Greenway NETWORK Plan

Plan Development – Environmental Documents

Nov 2021 – Winter 2022

- Environmental Strategy
- EIR/EIS



Public Engagement & Community Meetings

Nov 2019 – Summer 2022

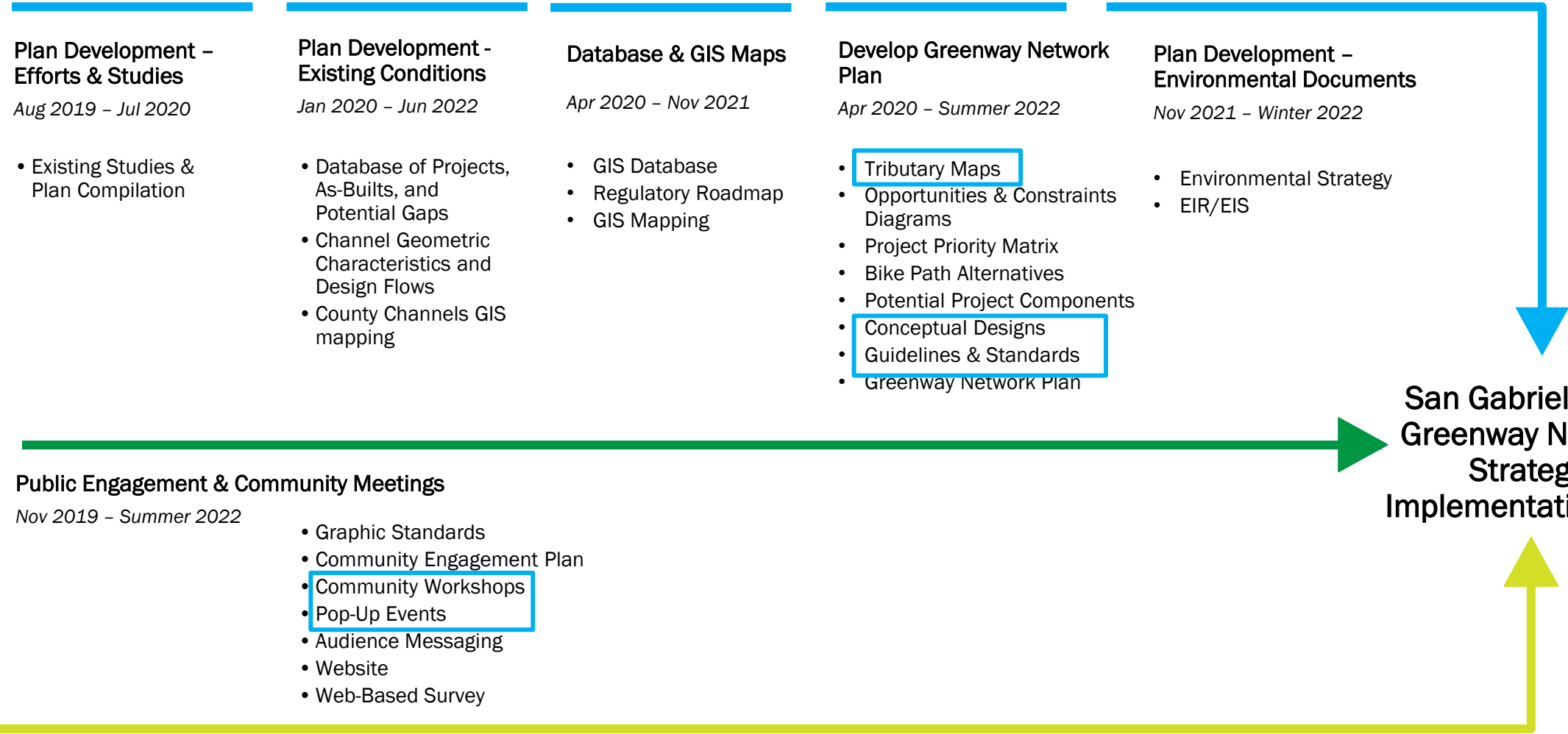
- Graphic Standards
- Community Engagement Plan
- Community Workshops
- Pop-Up Events
- Audience Messaging
- Website
- Web-Based Survey



Steering Committee Meeting

Today – Project Completion

San Gabriel Valley Greenway Network Strategic Implementation Plan



Community Engagement Update





Community Engagement Activities

- 01 Community Workshops: Round 2 – Design Alternatives
- 02 Map-Based Survey
- 03 Pop-Up Events
- 04 WCA Engagement
- 05 Community Workshops: Round 3

Community Workshops: Round 2

Workshop 1	February 16, 2022, 3:30 PM	15 Participants
Workshop 2	February 22, 2022, 6:00 PM	10 Participants

Community Workshops: Round 2

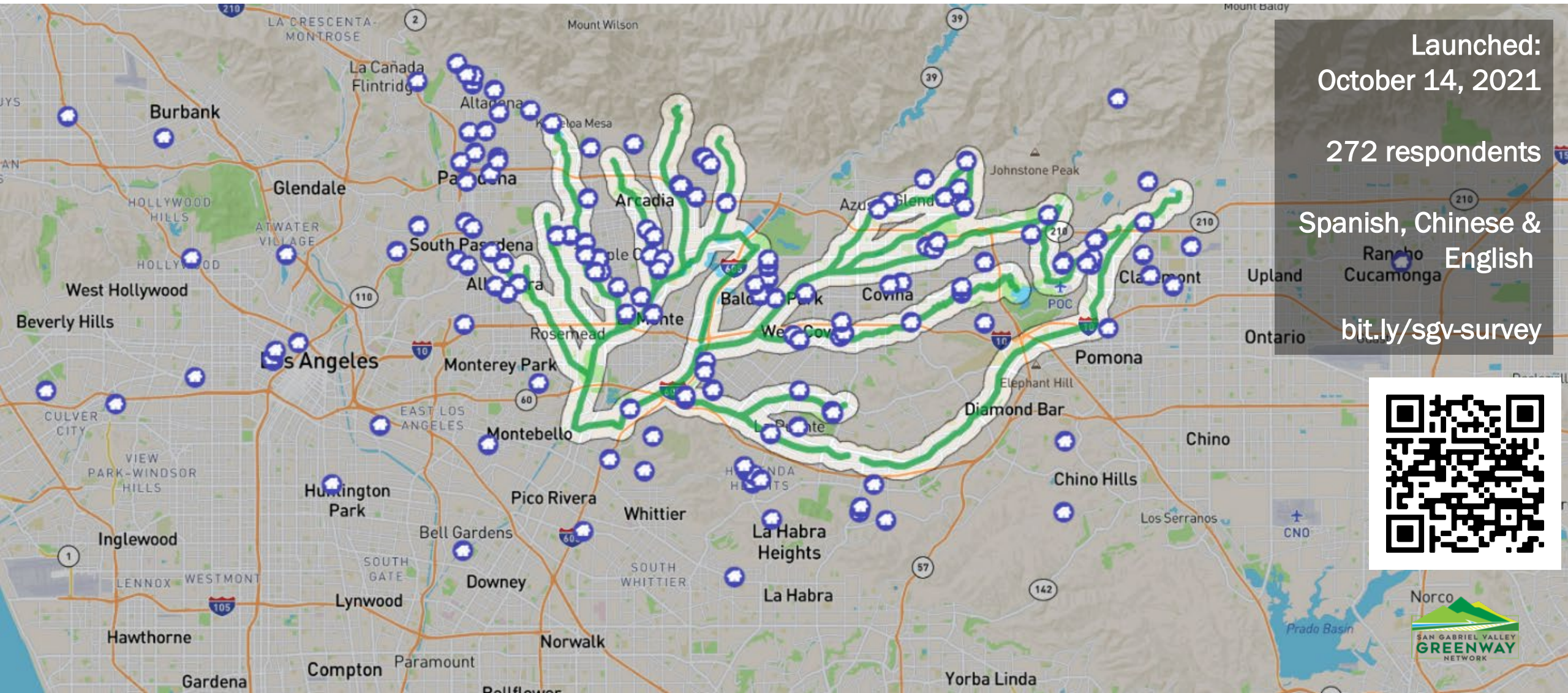
On-Street Alignments

- Wayfinding to main path/resources
- Pair with local pathways/corridors/plans
- Link with transit stops
- Avoid heavy traffic
- Avoid toxic/polluted areas
- Encampments

Adjacent Amenities

- Activities/amenities for families
- Historical stories/landmarks
- Waterway/ecological education
- Areas of rest/shade/greenery
- Bicycling events/amenities
- Safety features/lighting

Map-Based Survey



Launched:
October 14, 2021

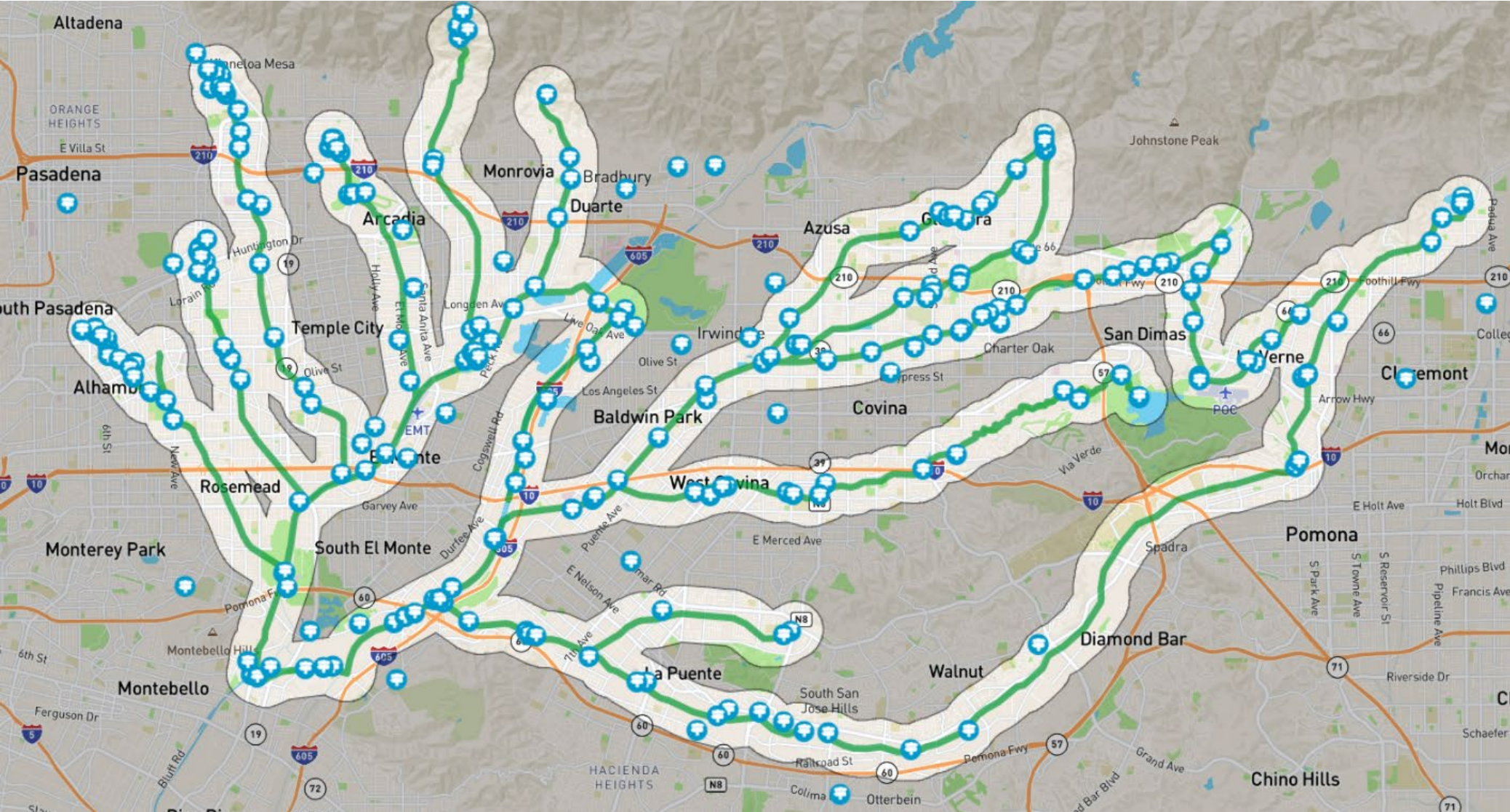
272 respondents

Spanish, Chinese &
English

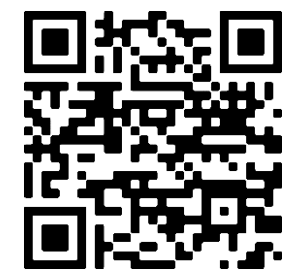
bit.ly/sgv-survey



Map-Based Survey



- MAP POINTS**
- Home:144
 - Uses: 240
 - Amenities:152
 - Access: 212
 - Destination: 184
 - Equestrian: 23
 - Concerns:68



Pop-Up Events



Pop-Up Events

#	Location	Date	Day	Time	Status
1	Whittier Narrows Recreation Area	12/18/2021	Saturday	9:00 AM – 2:00 PM	Completed
2	Peter Schabarum Regional Park	1/8/2022	Saturday	9:00 AM – 2:00 PM	Completed
3	Santa Fe Dam Recreation Area	1/15/2022	Saturday	9:00 AM – 2:00 PM	Completed
4	South Hills Park - City of Glendora	2/5/2022	Saturday	8:00 AM – 1:00 PM	Completed
5	Encanto Park - City of Duarte	3/5/2022	Saturday	8:00 AM - 1:00 PM	Completed
6	Expo Center Trail – City of Industry	3/12/2022	Saturday	8:00 AM - 1:00 PM	Confirmed

Pop-Up Events

#	Location	Date	Day	Time	Status
7	West Covina Farmers' Market	4/2/2022	Saturday	9:00 AM – 1:00 PM	Confirmed
8	Covina Farmers' Market	4/8/2022	Friday	5:00 PM – 9:00 PM	Confirmed
9	South Pasadena Farmers' Market	4/14/2022	Thursday	4:00 PM – 8:00 PM	Confirmed
10	Easter Egg Hunt – City of La Puente	4/16/2022	Saturday	10:00 AM – 1:00 PM	Pending
11	Arbor Day – San Dimas	4/30/2022	Saturday	10:00 AM - 1:00 PM	Pending
12	Bonelli Regional Park	TBD	TBD	TBD	Planned
13	Antonovich Trail	TBD	TBD	TBD	Planned
14	Walnut Creek Park	TBD	TBD	TBD	Planned
15	Peck Road Water Conservation Park	TBD	TBD	TBD	Planned

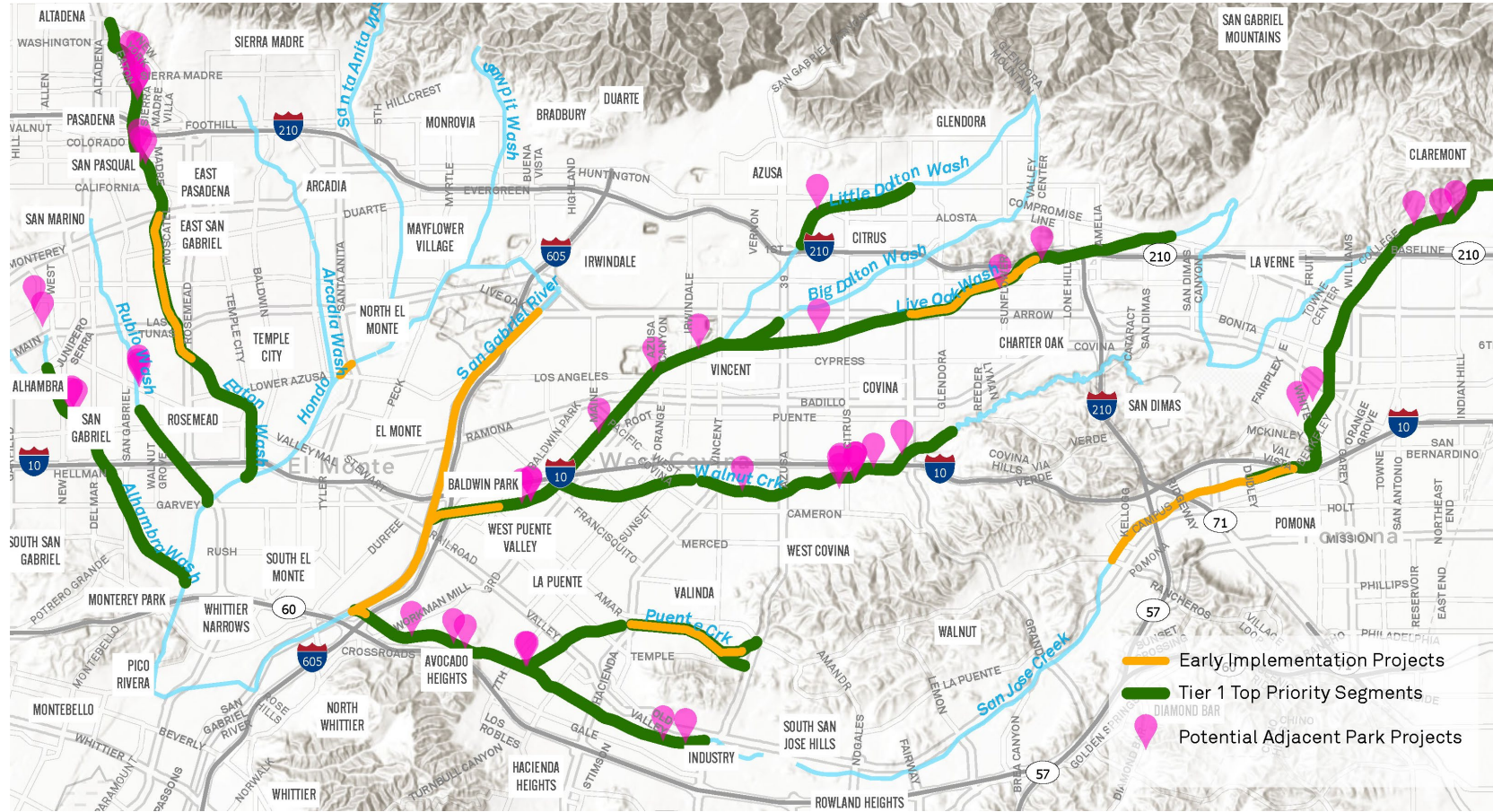
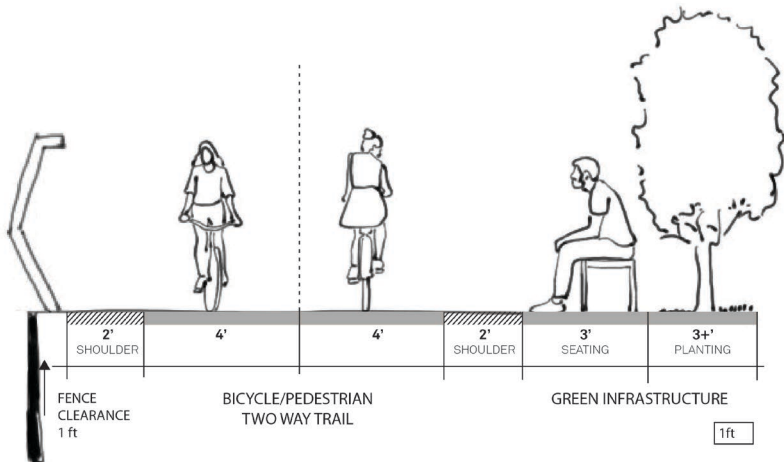
Watershed Conservation Authority (WCA) Engagement

- Conduct 16 workshops
 - Between March – July 2022
- Maximizing meaningful contacts with SGV entities to reach historically underserved communities
 - Partnering with:
 - Active SGV
 - Amigos de los Rios
 - Nature for All
 - Women's Clubs

Community Workshops: Round 3

Round 3

- May 2022 (tentative)
- Potential Topics:
 - Outreach Findings
 - Survey Findings
 - Proposed Conceptual Design Projects



SGVGN Plan Update





April 2022

- Tributary Narratives

May 2022

- Opportunities and Constraints Diagrams

September 2022

- SGV Greenway Network Plan

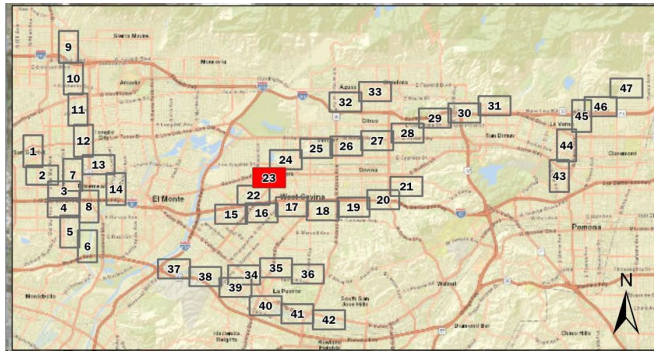
December 2022

- EIR/EIS

Bike Path Alignments Overview



Bike Path Alignment Example – Big Dalton Wash



PROPOSED BIKE PATH ALTERNATIVES

ROW WIDTH AVAILABILITY - ON CHANNEL

- LESS THAN 8 FEET ROW OR ROAD CROSSING
- 8-13
- 13-17
- 17-19
- 19-24
- GREATER THAN OR EQUAL 24

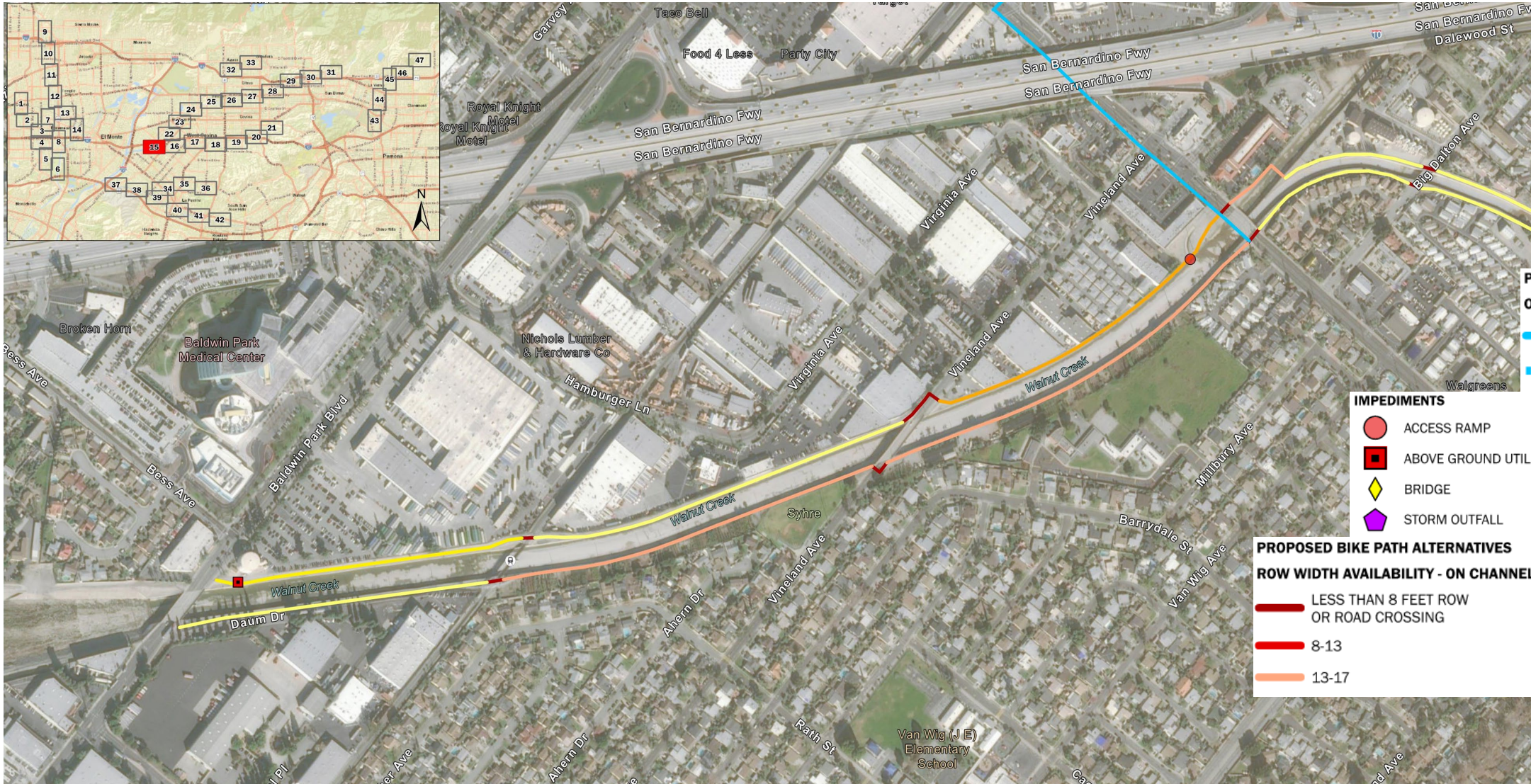
IMPEDIMENTS

- ACCESS RAMP
- ABOVE GROUND UTILITY BOX
- ◆ BRIDGE
- ◆ STORM OUTFALL
- ↔ PEDESTRIAN BRIDGE
- + PIPE CROSSING CHANNEL
- PUMP STATION
- ⚓ RAILROAD
- ▲ STRUCTURE

PROPOSED BIKE PATH ALTERNATIVES OFF CHANNEL ALIGNMENT

- OVERLAPS WITH AN EXISTING OR PROPOSED BIKE PATH
- - - DOESN'T OVERLAP WITH A BIKE PATH

Bike Path Alignment Example – Walnut Creek



PROPOSED BIKE PATH ALTERNATIVES OFF CHANNEL ALIGNMENT

- OVERLAPS WITH AN EXISTING OR PROPOSED BIKE PATH
- - - DOESN'T OVERLAP WITH A BIKE PATH

IMPEDIMENTS

- ACCESS RAMP
- ABOVE GROUND UTILITY BOX
- ◇ BRIDGE
- ◇ STORM OUTFALL

- ↔ PEDESTRIAN BRIDGE
- + PIPE CROSSING CHANNEL
- PUMP STATION
- RAILROAD
- ▲ STRUCTURE

PROPOSED BIKE PATH ALTERNATIVES

ROW WIDTH AVAILABILITY - ON CHANNEL

- LESS THAN 8 FEET ROW OR ROAD CROSSING
- 8-13
- 13-17

- 17-19
- 19-24
- GREATER THAN OR EQUAL 24

Bike Path Alignment Example – Alhambra Wash



Project Components Overview



Tier 1 Tributary	Initially Identified	After Screening	Selected for Further Review	Est. Tier 1 Length (mi)	Est. Project Components per Channel Mile (#/mi)
Alhambra Wash	23	3	3	5.3	0.6
Eaton Wash	16	9	7	7.5	0.9
Thompson Creek	16	14	5	5.9	0.9
Walnut Creek	58	19	7	7.7	0.9
Live Oak/San Dimas Wash	33	4	3	7.2	0.4
San Jose Creek	39	6	3	7.6	0.4
Little Dalton Wash	11	1	1	2.2	0.5
Big Dalton Wash	39	4	3	4.9	0.6
Rubio Wash	6	1	1	2.5	0.4
Puente Creek	27	3	1	3.9	0.3
Total	268	64	34	54.7	0.6 (average)



- POTENTIAL PROJECT LOCATION
- CREEK/WASH CENTERLINE

Project Component Example – Vincent Lugo Park

Vincent Lugo Park Retrofit and Enhancements

Channel: Alhambra

Reach: Alhambra Wash 2

Project ID: A15



WEIGHTED FEASIBILITY OF CHANNEL REACH					
Army Corps Channel	Community Score	Circulation Score	Environment Score	Synergy Score	Feasibility Score
Yes	1.2	1.4	0.3	0.3	12.1

Potential Project Elements

- Offsite stormwater management opportunities
- Neighborhood access to Channel ROW



Project Component Example – Alhambra Gateway

Future North Alhambra Wash Gateway Park at Alhambra Rd.

Channel: Alhambra

Reach: Alhambra Wash 1

Project ID: A22



WEIGHTED FEASIBILITY OF CHANNEL REACH

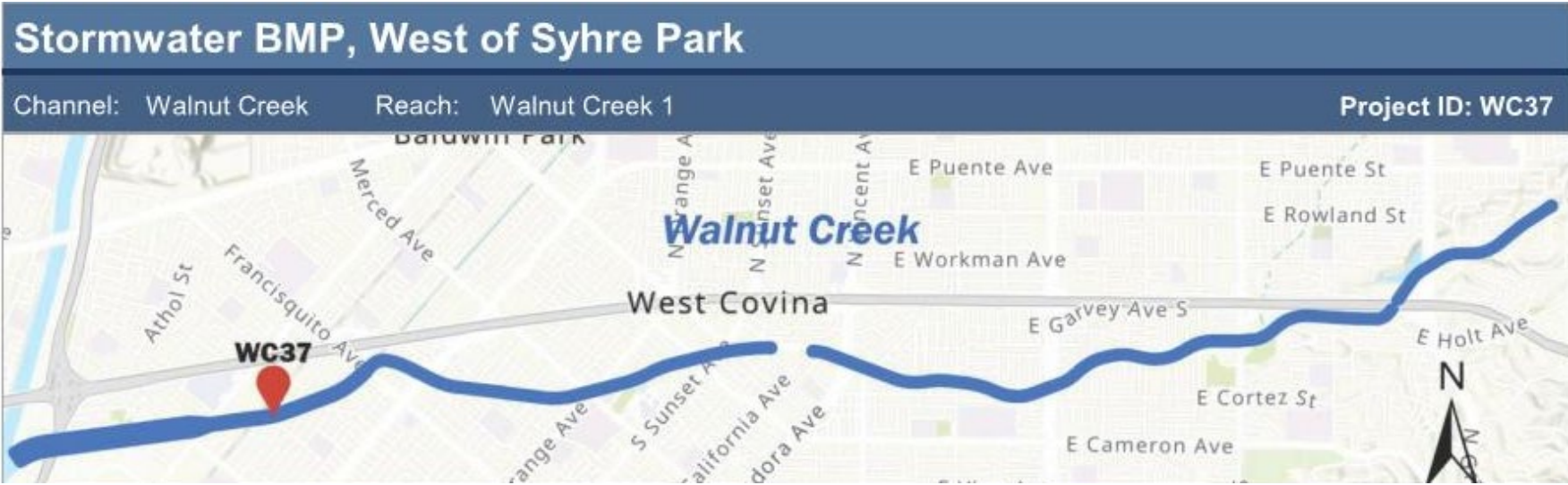
Army Corps Channel	Community Score	Circulation Score	Environment Score	Synergy Score	Feasibility Score
Yes	1.3	1.2	0.15	0.3	10.2

Potential Project Elements

- Park/greenspace construction
- Neighborhood access to Channel ROW



Project Component Example – Walnut Creek Park



WEIGHTED FEASIBILITY OF CHANNEL REACH					
Army Corps Channel	Community Score	Circulation Score	Environment Score	Synergy Score	Feasibility Score
No	1.2	3.05	0.5	1.1	20.6

Potential Project Elements

- Park/greenspace construction
- Neighborhood access to Channel ROW



Small Group Discussion



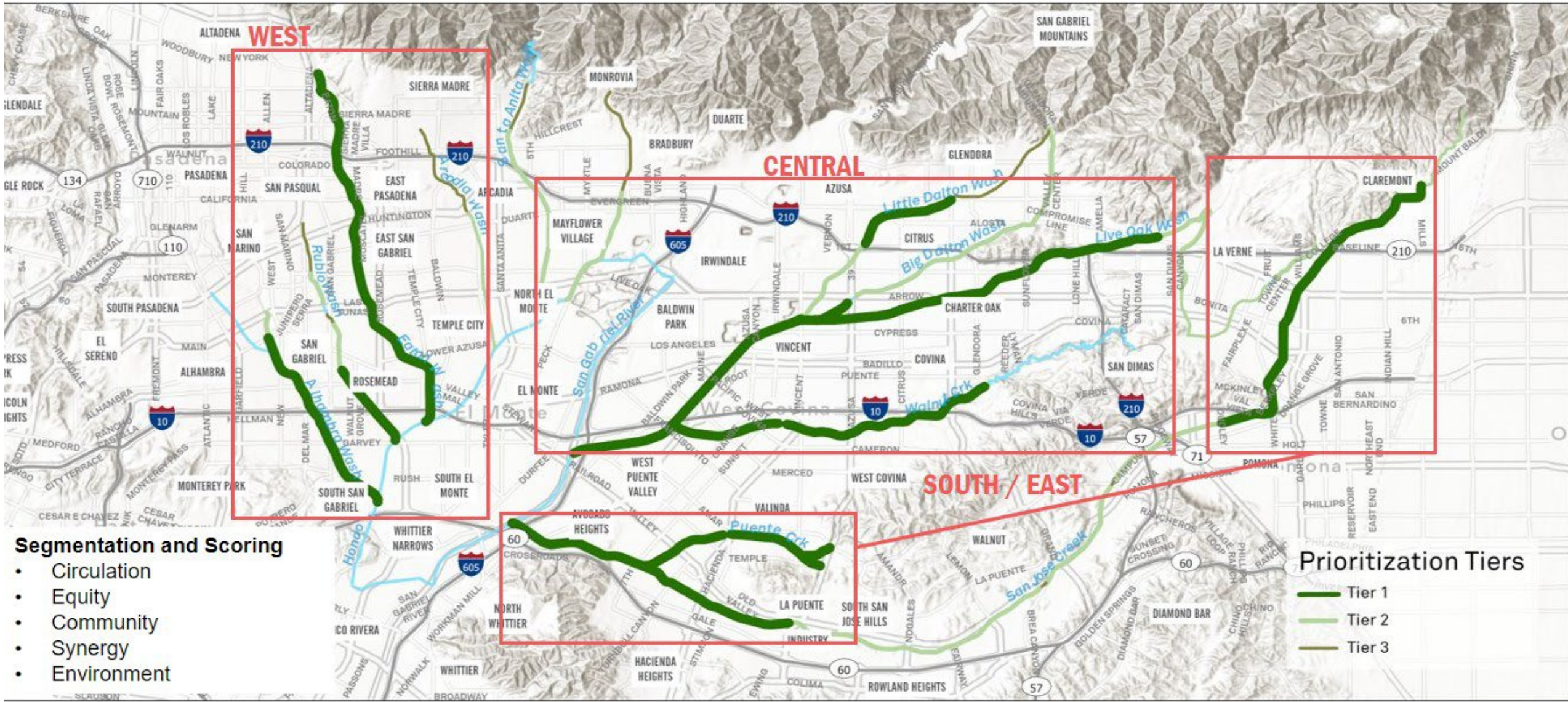
Breakout Rooms

The screenshot shows the Zoom desktop client interface. A large black box in the center contains the text "MIG - PPEC5". To the right, a white panel titled "Breakout Rooms - In Progress (00:29:38)" lists three rooms: "Room 1 - West", "Room 2 - Central", and "Room 3 - South", each with a "Join" button. At the bottom, a "Join a breakout room" button is highlighted with a yellow box, and the "Breakout Rooms" icon in the bottom toolbar is also highlighted with a yellow box.

Room Name	Participants	Action
Room 1 - West	0	Join
Room 2 - Central	0	Join
Room 3 - South	0	Join

The screenshot shows the Zoom mobile app interface. A "Join Breakout Room" dialog is open, showing "Room 1" selected with a checkmark and a "Join" button. The "Join Breakout Room" icon in the top left of the app is highlighted with a yellow box.

Determining Greenway Focus Areas



Segmentation and Scoring

- Circulation
- Equity
- Community
- Synergy
- Environment

Prioritization Tiers

- Tier 1
- Tier 2
- Tier 3

Discussion Questions

Potential Bike Path Alignments

- What are specific on-channel alignments that are potential bike path opportunities?
- How would you expect on-street alignments to impact the use of greenways? Please share your experiences with previous projects or proposals.

Potential Project Components and Park Opportunities

- What are specific parcel locations that are potential park opportunities?
- In your experience, what would you expect communities to request as far as amenities to be included or potential park locations? Have any of these requests caused concerns?



Asks of the Steering Committee



Provide feedback for the Community Workshops: Round 3.



Send of list of potential groups (names and emails) that would benefit and would have interest in joining the Community Workshops.



The Project Team's goal is to promote the workshops one month prior to the event.

Next Steps



- Meeting minutes summary to be sent after the meeting.
- SGVGN Plan Update
 - Opportunity and Constraints Diagrams – May 2022
- Community Engagement Update
 - Continue with planned Pop-Up Events
 - Continue efforts to plan future Pop-Up Events
 - Preparation for Community Workshops Round 3

Next Meeting:

- **May 11, 2022, 2:00 PM – 4:00 PM**
 - Community Engagement Update
 - SGVGN Plan Update
 - Environmental Documentation Update

