

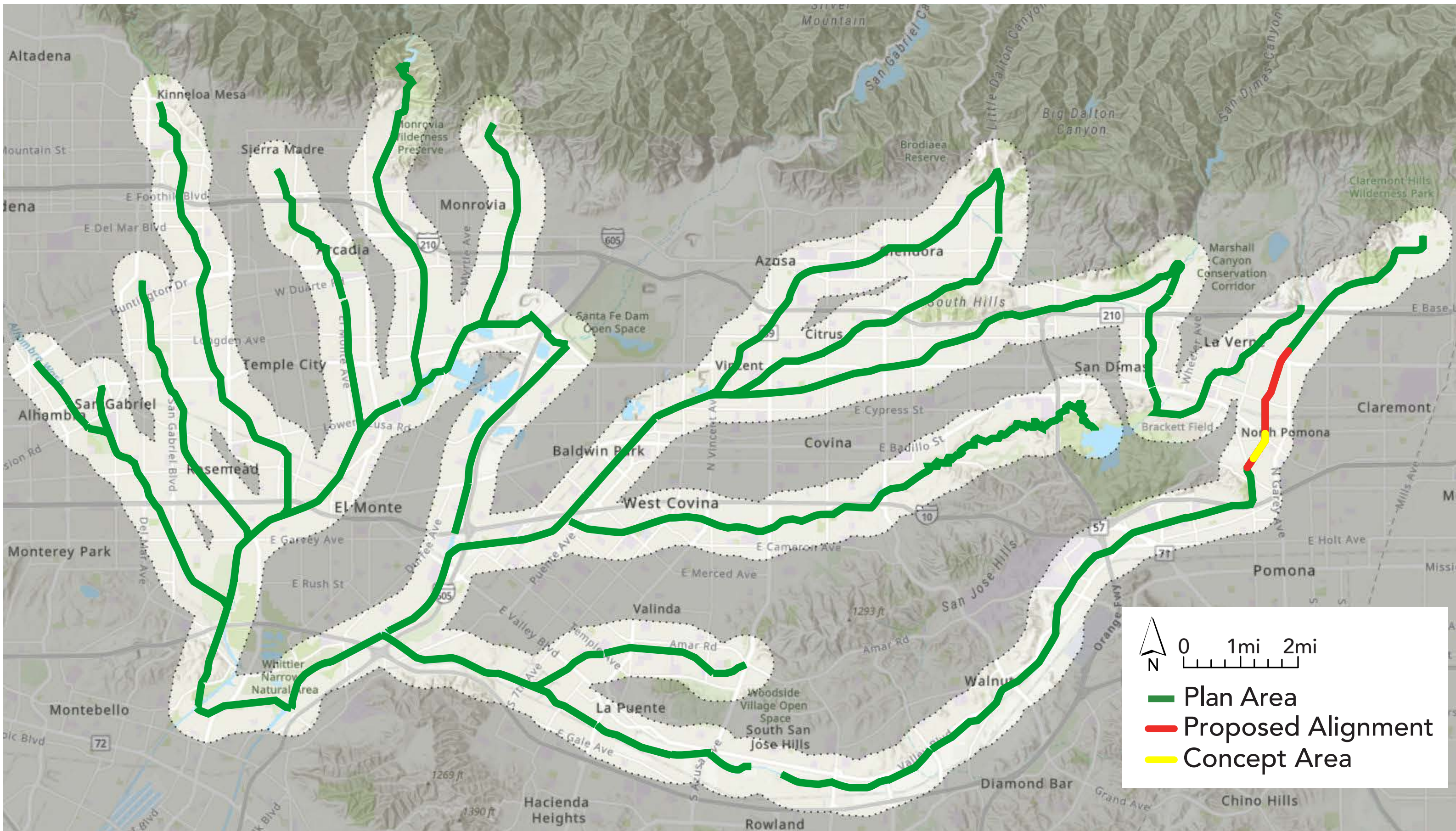
The San Gabriel Valley Greenway Network

4. THOMPSON CREEK

at the Fairplex in Pomona and La Verne



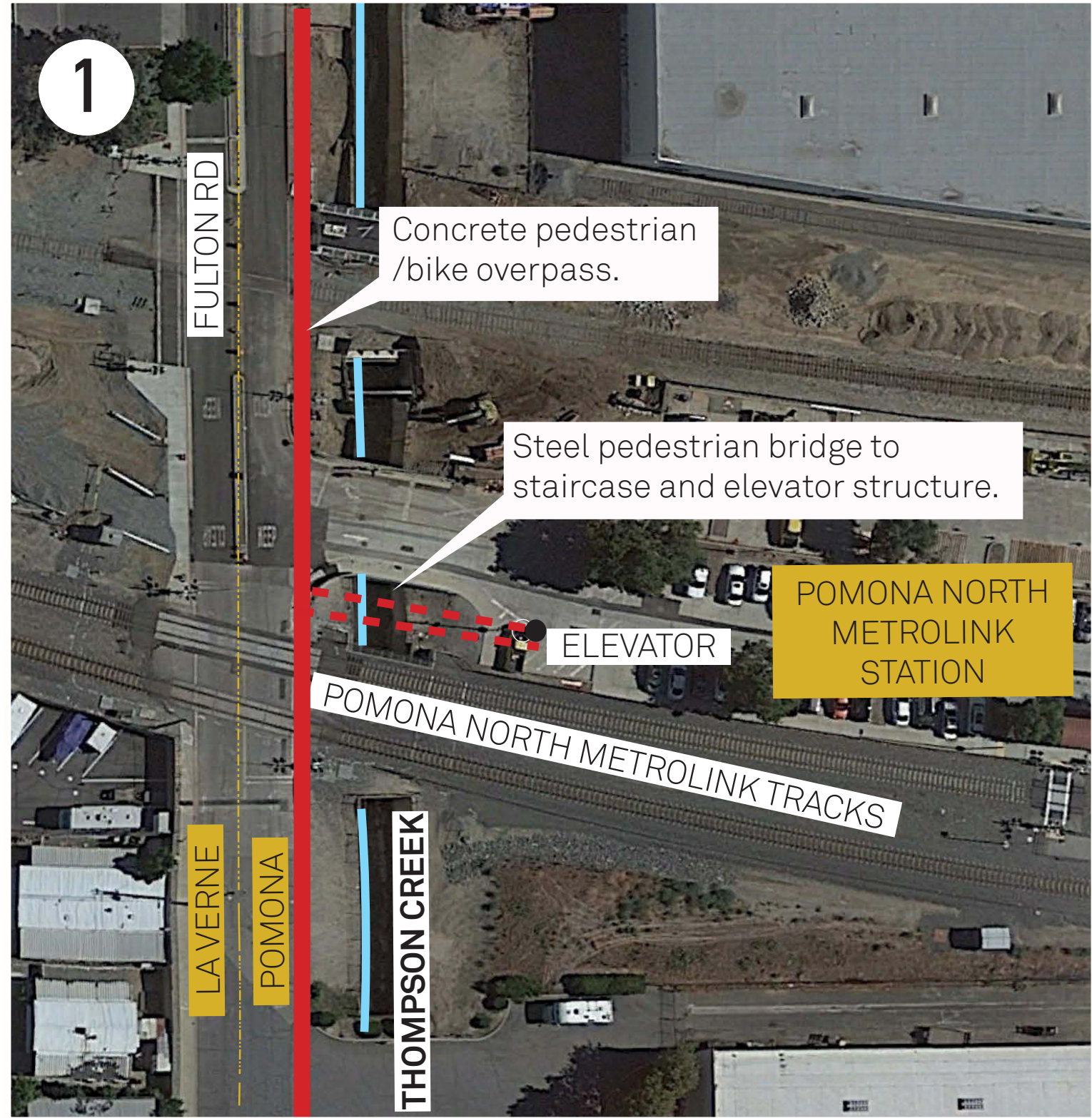
Vicinity Map



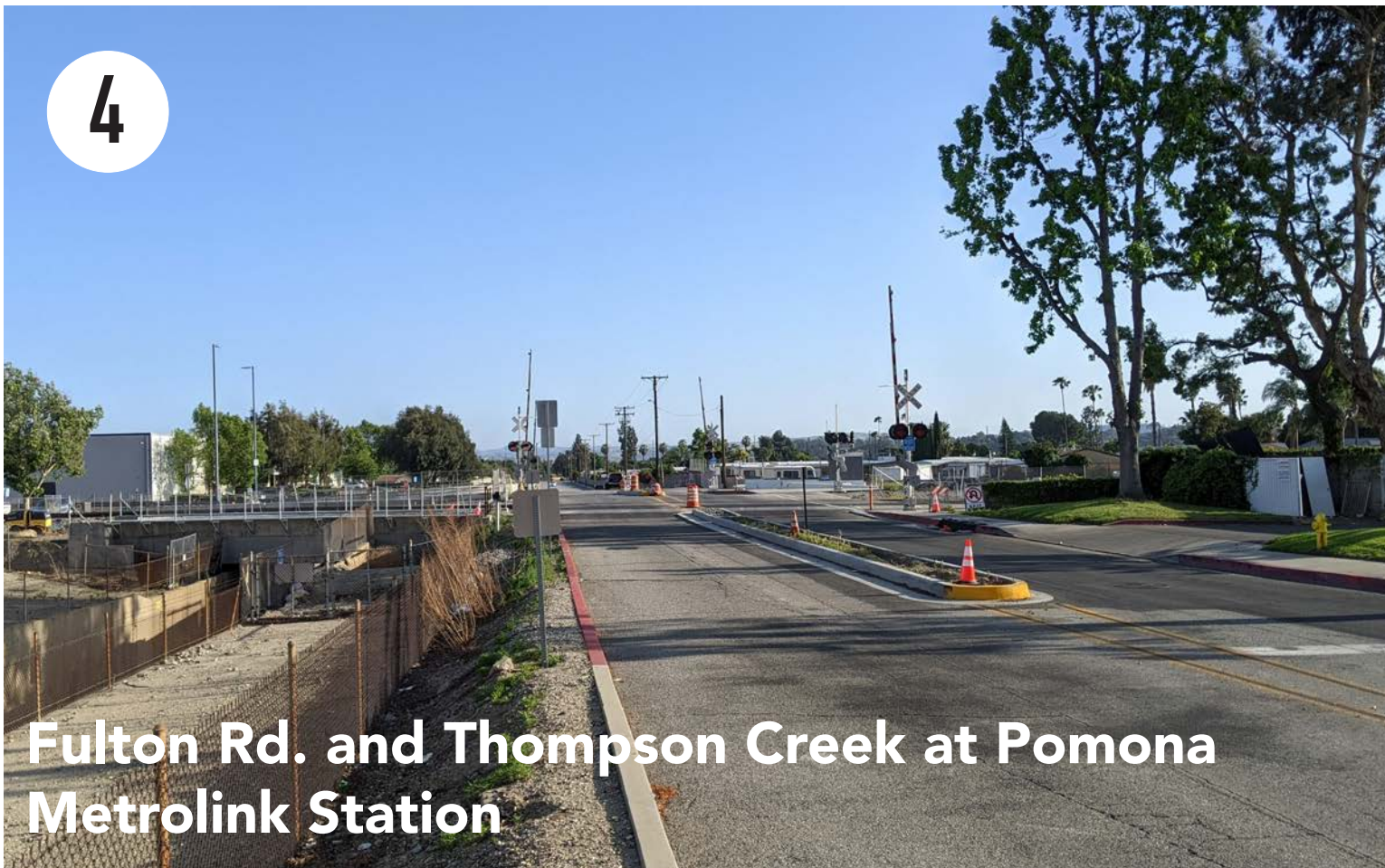
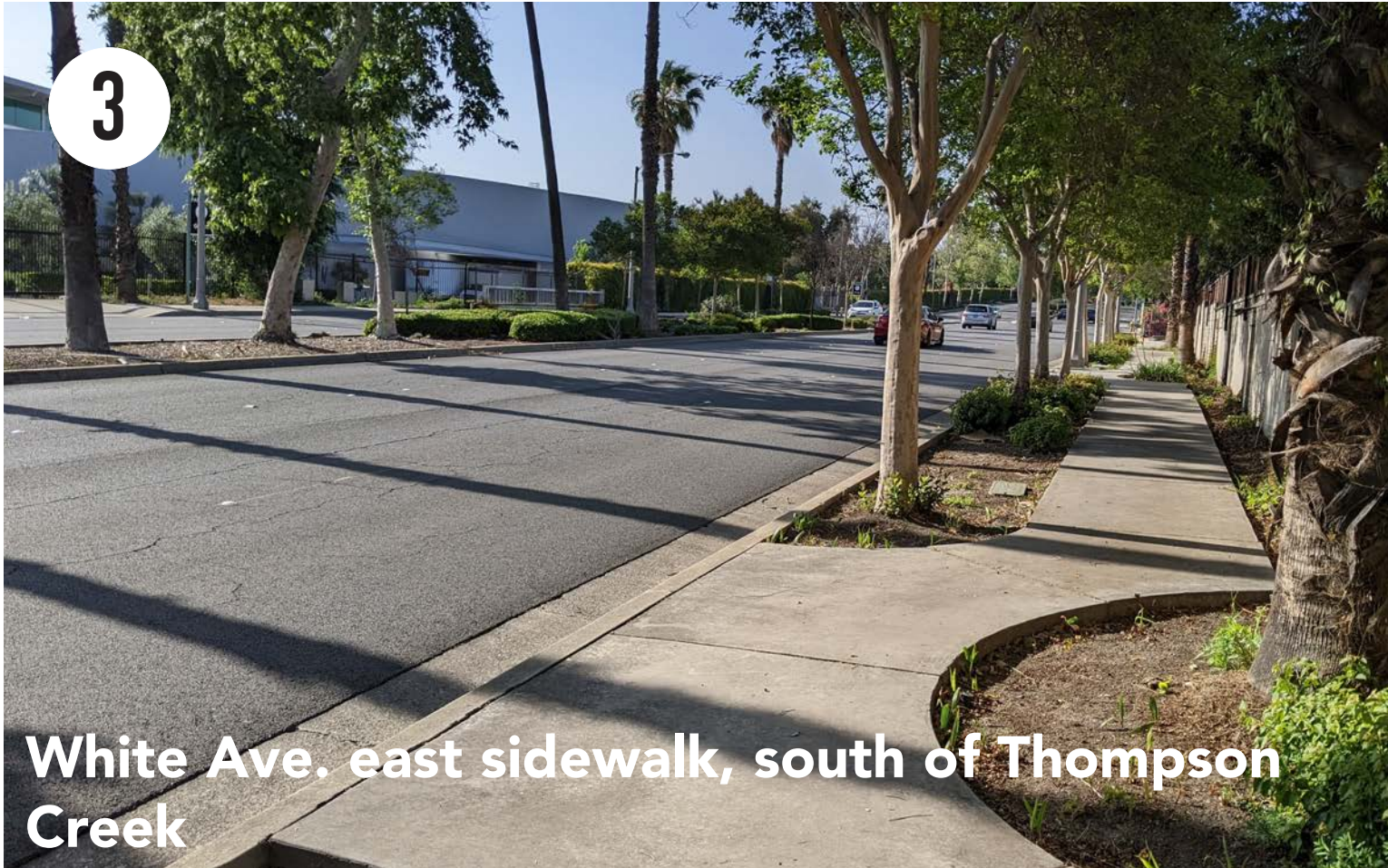
Learn More

For more information, please visit the website at SGVGreenway.org. To contact someone about technical matters or additional planning issues please email: sgvgreenway@pw.lacounty.gov

Improve Connections



Existing Conditions



Concept Possibilities

SIDEWALK EXPANSION

Expand the sidewalk by approximately 1460 FT for 6 to 6.5 FT wide sidewalk.

GREEN INFRASTRUCTURE

Reduce heat island effect with paint, permeable pavers. Capture and direct stormwater with bioretention basins.

PEDESTRIAN CROSSING

Connect a Steel pedestrian bridge to staircase and elevator structure at Pomona North Metrolink Station.

LIVING EDGE

Include character planting, shade, seating, gathering space, and other recreational amenities for greenway users.

GREENWAY OVERPASS

Provide a separated ADA- compliant route over the station entrance driveway and commuter rail, light rail transit, and freight rail.

