

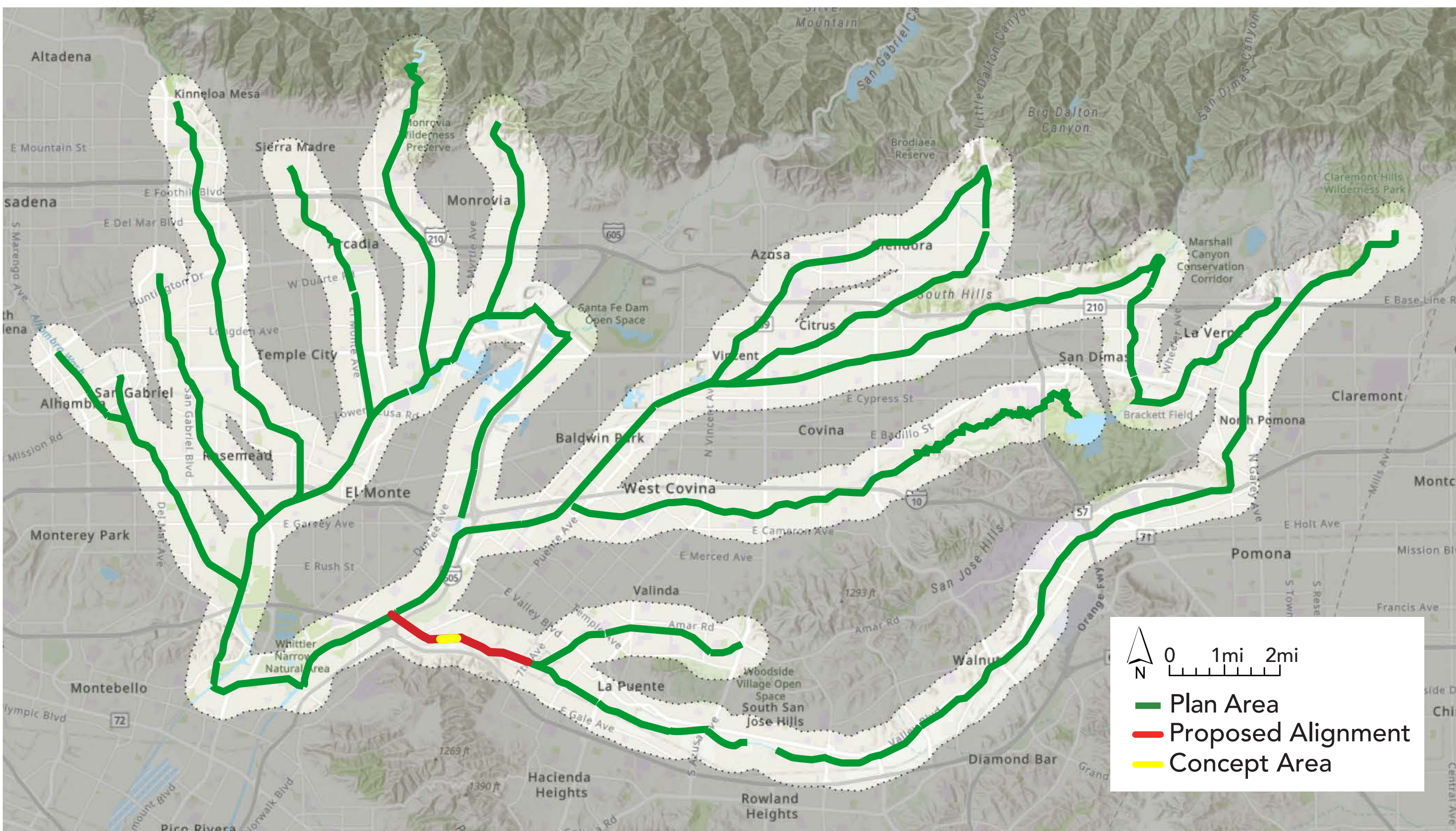
The San Gabriel Valley Greenway Network

9. SAN JOSE CREEK

at a Pocket Park in Unincorporated LA County, Avocado Heights



Vicinity Map



Learn More

For more information, please visit the website at SGVGreenway.org. To contact someone about technical matters or additional planning issues please email: sgvgreenway@pw.lacounty.gov

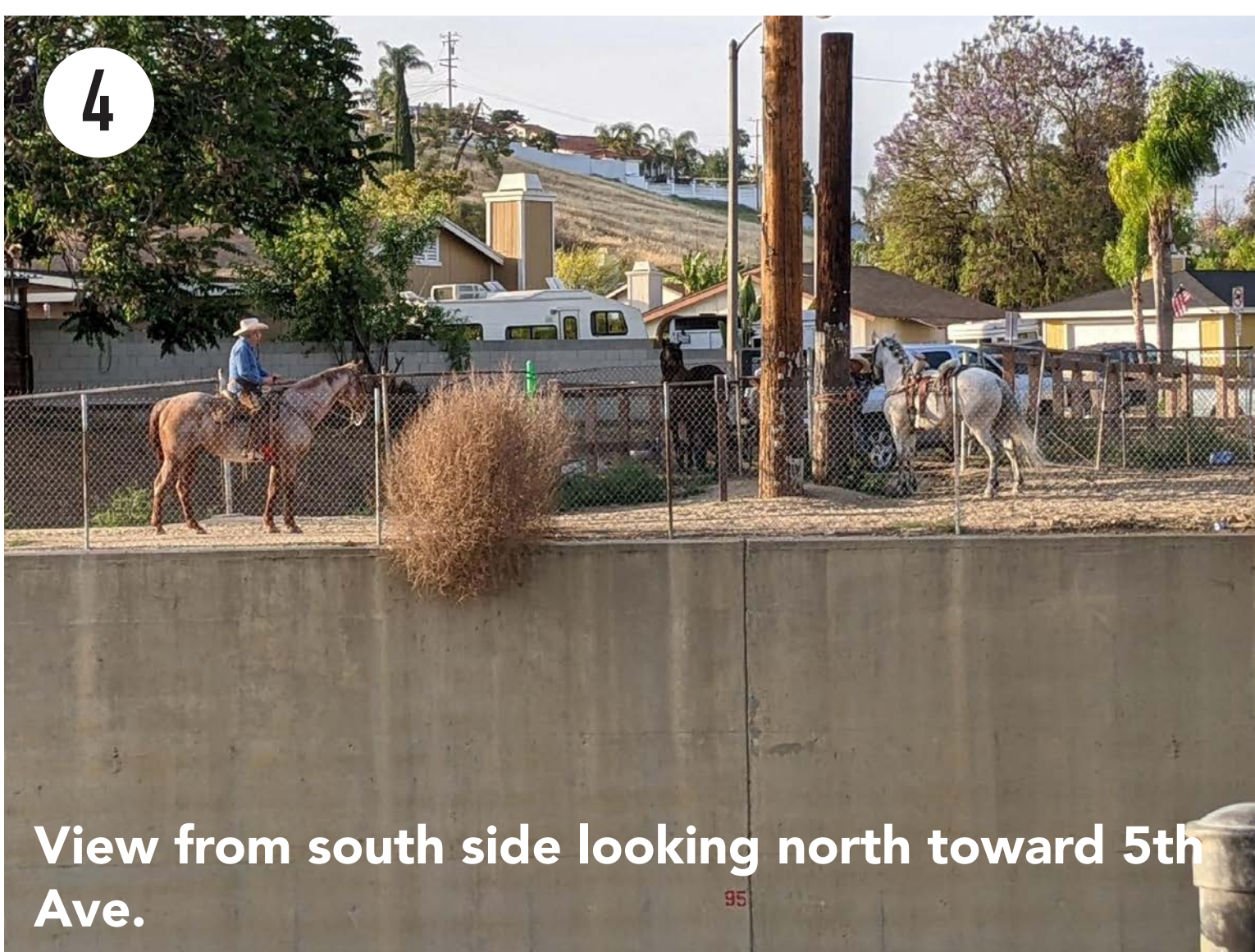
Concept Area



Improve Connections



Existing Conditions



Concept Possibilities

EXPANDED OPEN SPACE

Dedicate any part of the path greater than 12 feet to pocket park use, habitat corridors, and community garden space.

POCKET PARK

Add a small pocket park on the south bank with seating areas and shade overlooking the San Jose Creek to provide a moment of respite.

