

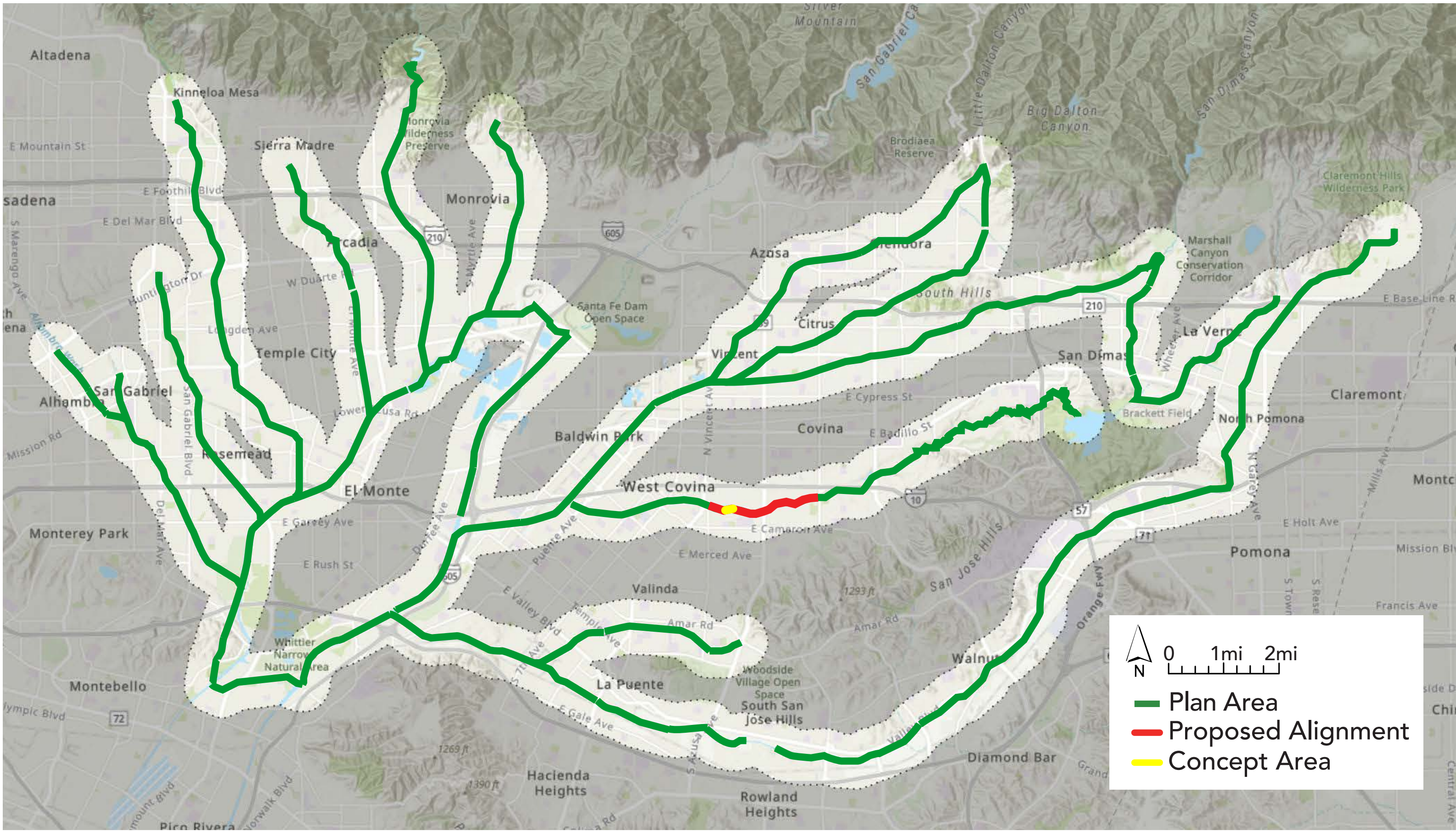
# The San Gabriel Valley Greenway Network

## 10. WALNUT CREEK

at Pocket Park in West Covina



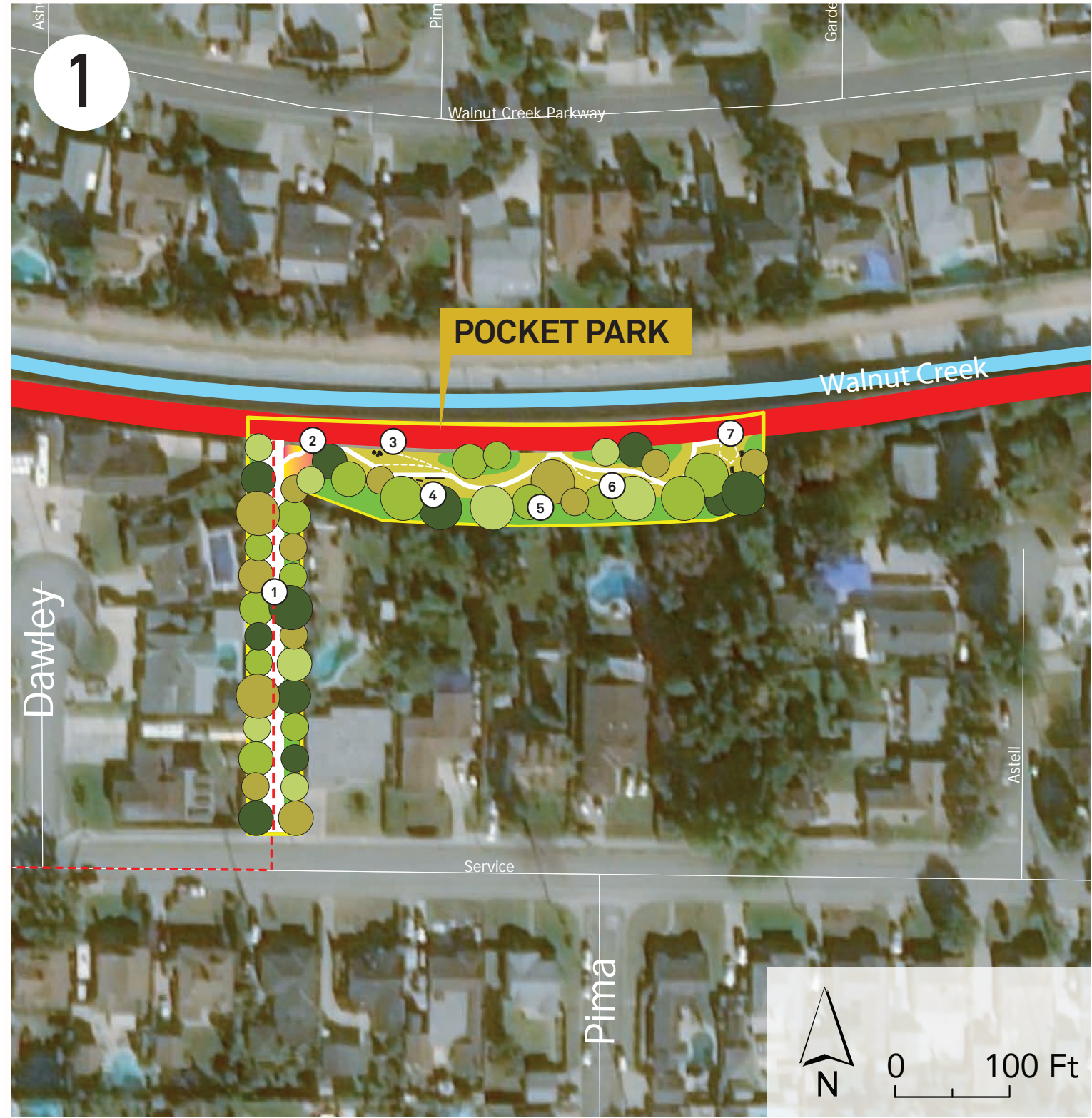
### Vicinity Map



### Learn More

For more information, please visit the website at [SGVGreenway.org](http://SGVGreenway.org). To contact someone about technical matters or additional planning issues please email: [sgvgreenway@pw.lacounty.gov](mailto:sgvgreenway@pw.lacounty.gov)

### Concept Area



### Improve Connections



### Existing Conditions



### Concept Possibilities

**STORMWATER APPROACH**  
Manage stormwater flows at the pocket park using nature-based stormwater controls like bioretention, subsurface infiltration, or an extended detention basin.

**POCKET PARK**  
Include public artwork, character planting, shade, seating and small picnic area for greenway users and neighborhood residents. A park also provides opportunities to optimize biodiversity along the greenway.

**EXISTING PLATFORM EXTENSION**  
Extend the existing platform spanning the channel to provide an overlook for views of Walnut Creek.

**NEIGHBORHOOD CONNECTION**  
Convert the county owned parcel west of the channel into a connection between the greenway and adjacent neighborhoods.

