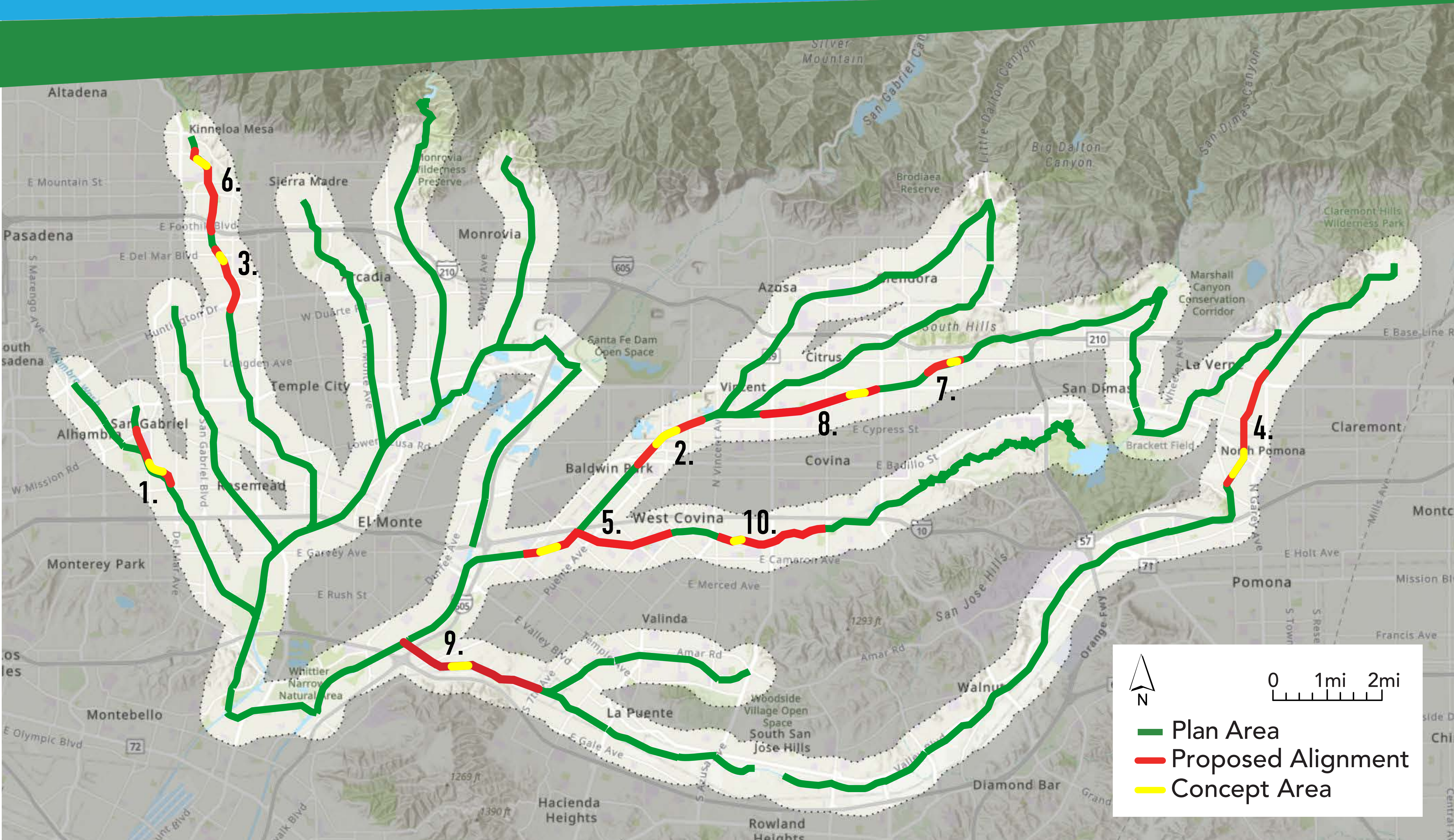


# The San Gabriel Valley Greenway Network

# A PATH FORWARD



## CONCEPT AREAS

1. ALHAMBRA WASH AT VINCENT LUGO PARK
2. BIG DALTON WASH AT HILDA SOLIS PARK
3. EATON WASH AT EATON BLANCHE PARK
4. THOMPSON CREEK AT THE FAIRPLEX
5. WALNUT CREEK AT SYHRE PARK
6. EATON WASH AT SPREADING GROUND SITE
7. SAN DIMAS WASH AT ARROW HIGH SCHOOL
8. SAN DIMAS WASH AT HOLLENBECK PARK
9. SAN JOSE CREEK AT POCKET PARK
10. WALNUT CREEK AT POCKET PARK

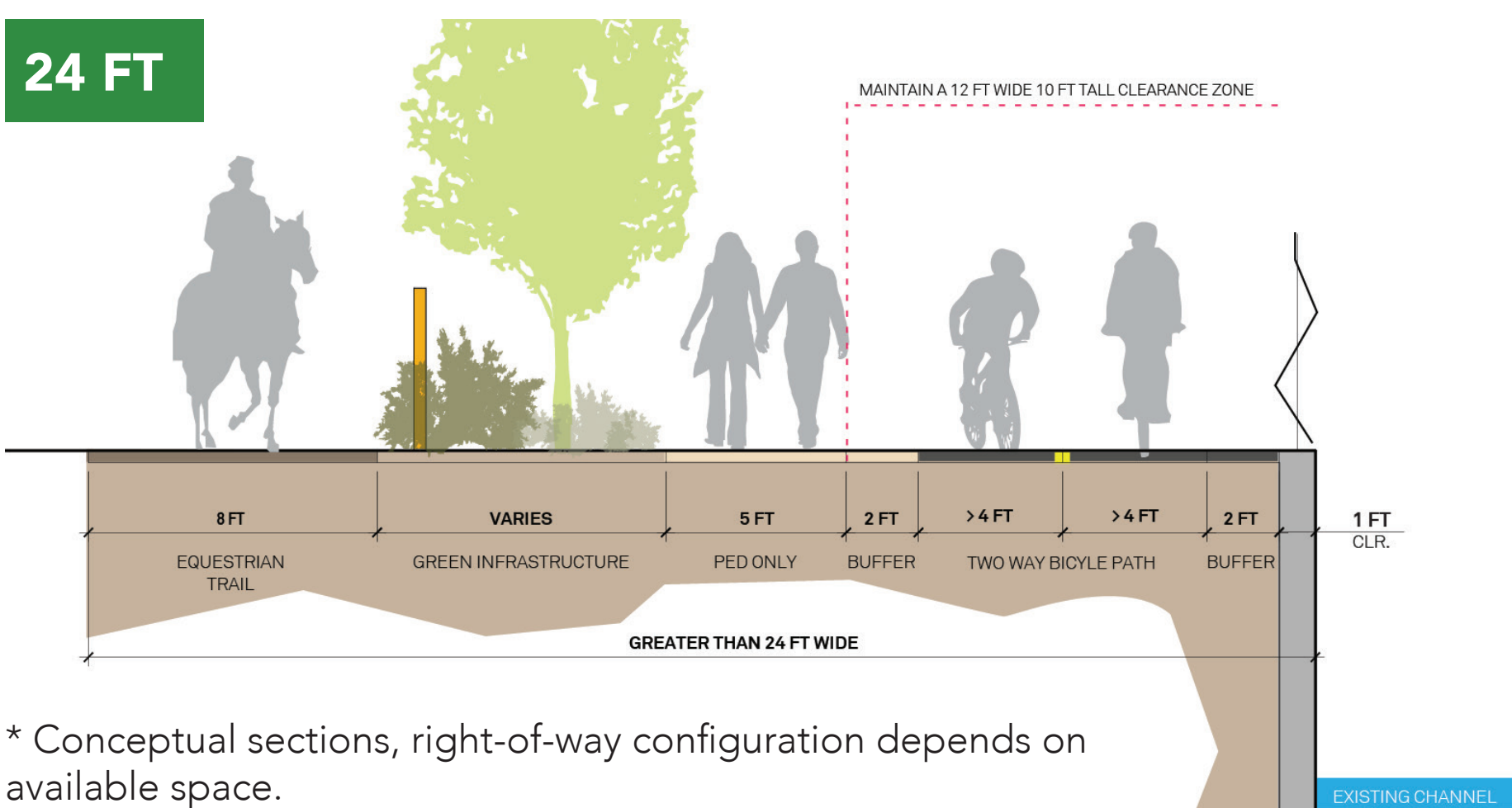
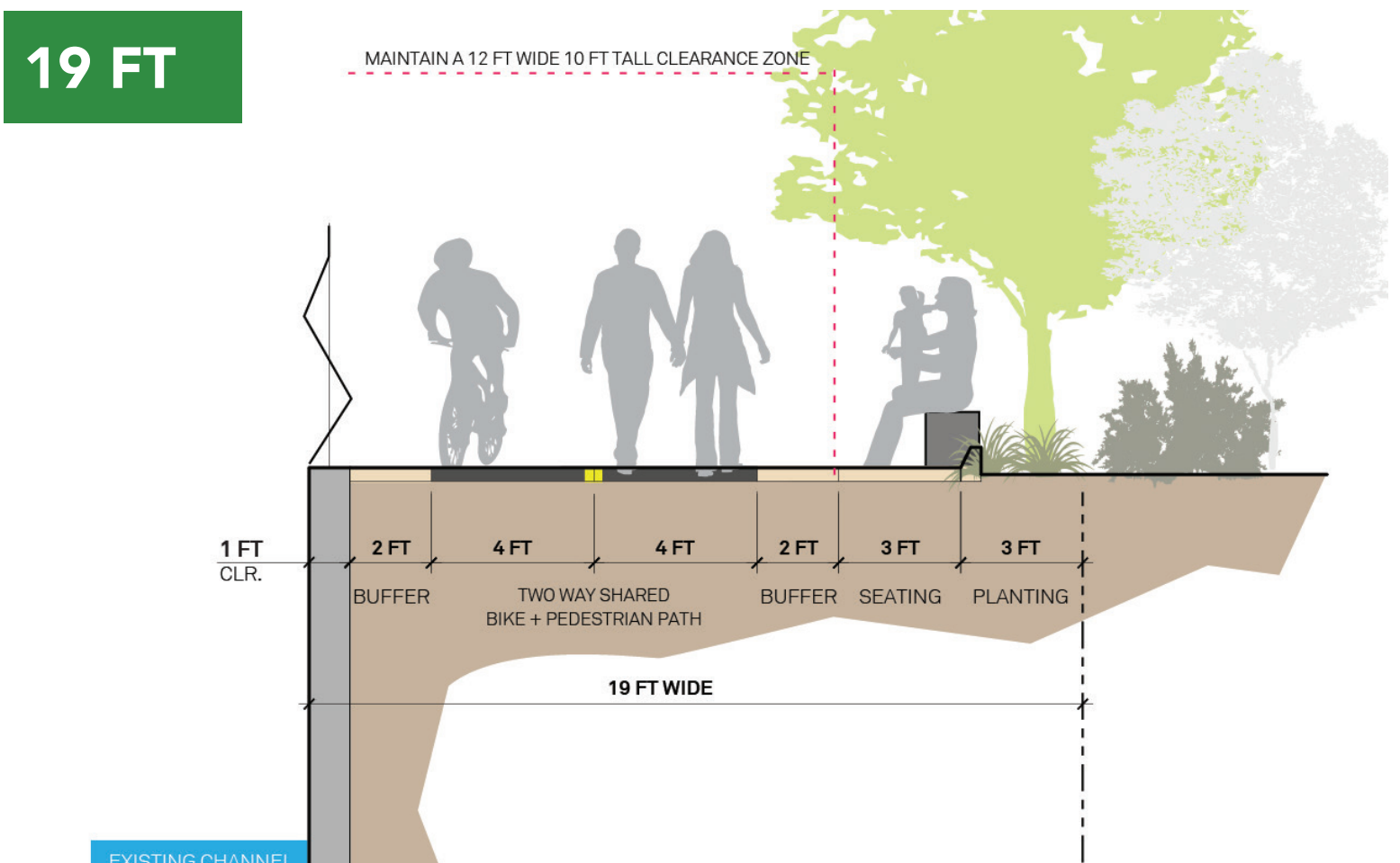
## About the Greenway

The San Gabriel Valley Greenway Network (SGV Greenway) Plan will help transform the San Gabriel River watershed into a world-class greenway—connecting communities and improving access to open space and recreation along the Rio Hondo, San Gabriel River, adjacent tributaries and creeks.

The final Plan will include research, guidelines, conceptual designs, and environmental documentation; serving as a road map for project proponents and a vision for the future of these channels.

Although this plan will not provide access to specific funding sources for implementation, it will help set up reaches for future consideration with supportive analysis.

## Example Pathway Configurations



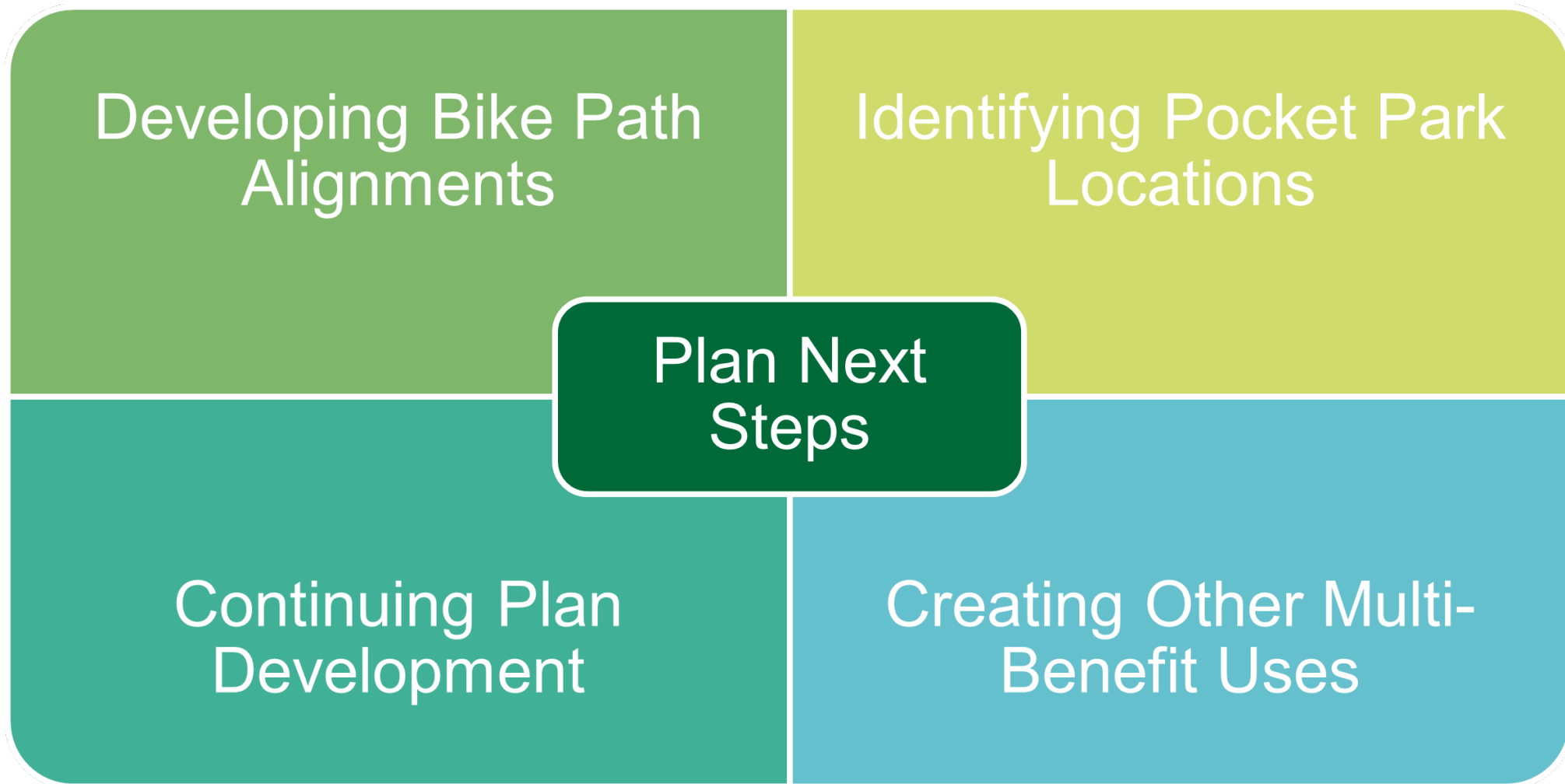
\* Conceptual sections, right-of-way configuration depends on available space.  
\*\*The Greenway may include equestrian usage where appropriate.

## Learn More

For more information, please visit the website at [SGVGreenway.org](https://sgvgreenway.org). To contact someone about technical matters or additional planning issues please email: [sgvgreenway@pw.lacounty.gov](mailto:sgvgreenway@pw.lacounty.gov)

## About the Greenway Concepts

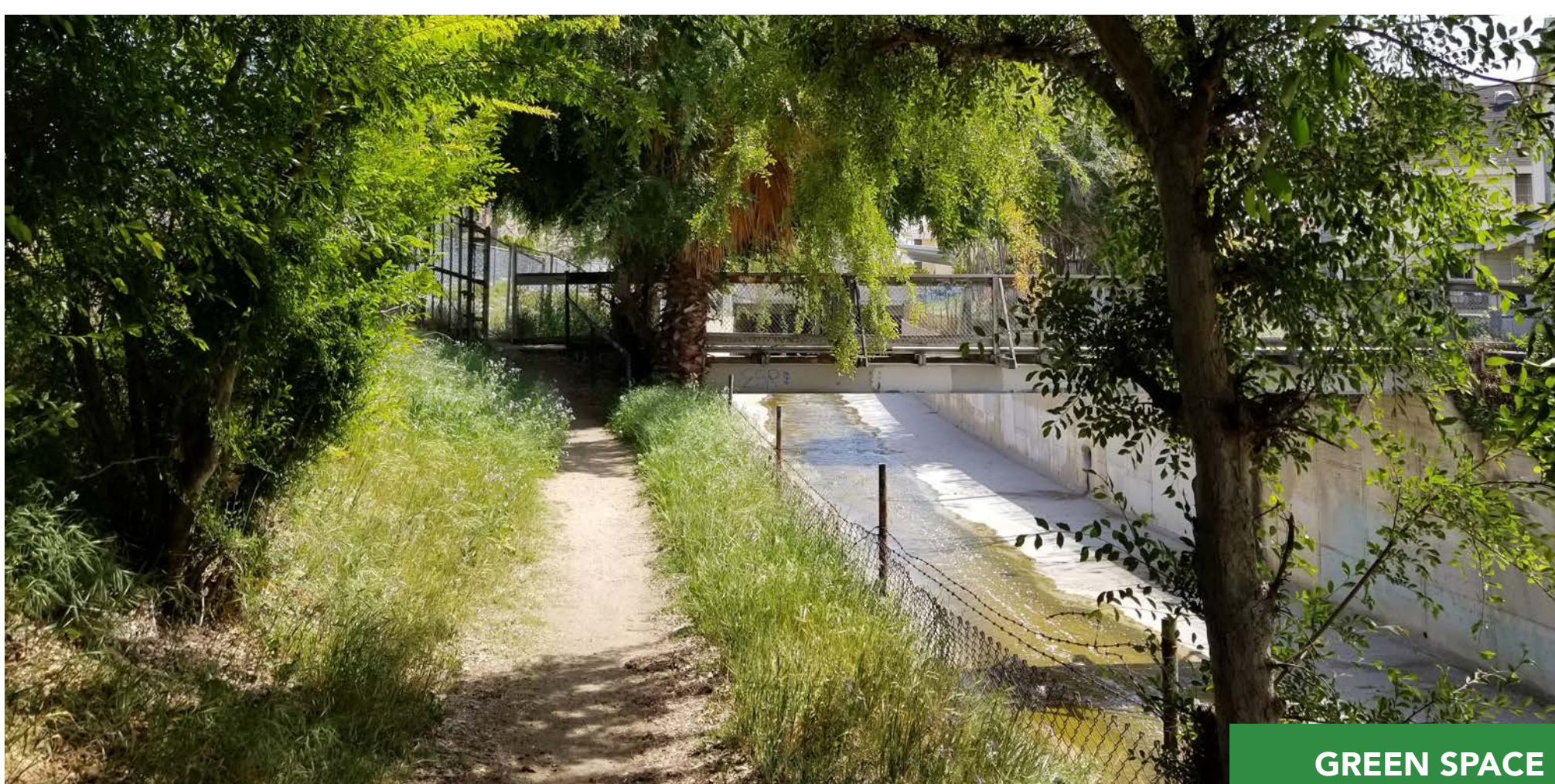
The Team **identified ten potential projects within the Plan area** along Greenway segments and adjacent multi-benefit park opportunities. These concepts are meant to be a starting point as inspiration for future projects development.



## Example Greenway Features



WALKING TRAILS



GREEN SPACE



BIKE PATHS



AMENITIES

## Key Goals

- IMPROVE RECREATION AND MOBILITY** opportunities for all abilities.
- INCREASE ACTIVE TRANSPORTATION** options to help reduce daily vehicle miles traveled (VMT).
- BOLSTER EQUITY** by improving safe access to recreation, jobs, schools, and shopping.
- EXPAND ENVIRONMENTAL BENEFITS** through added green spaces that improve stormwater capture.
- CONNECT TO EXISTING GREENWAYS** and bike lanes, and build upon previous and existing projects.

