

# San Gabriel Valley Greenway Network WORKSHOP 3



Presented by: Los Angeles County Public Works

Dates: June 16, 2022  
June 18, 2022



# Land Acknowledgement





# WELCOME!





# AGENDA

- 01 **Plan Overview** | *The Greenway Network*
- 02 **Community Engagement** | *Key Findings*
- 03 **Conceptual Designs Overview** | *Proposed Projects*
- 04 **Next Steps**
- 05 **Discussion** | *Q and A*
- 06 **Interactive Open House**



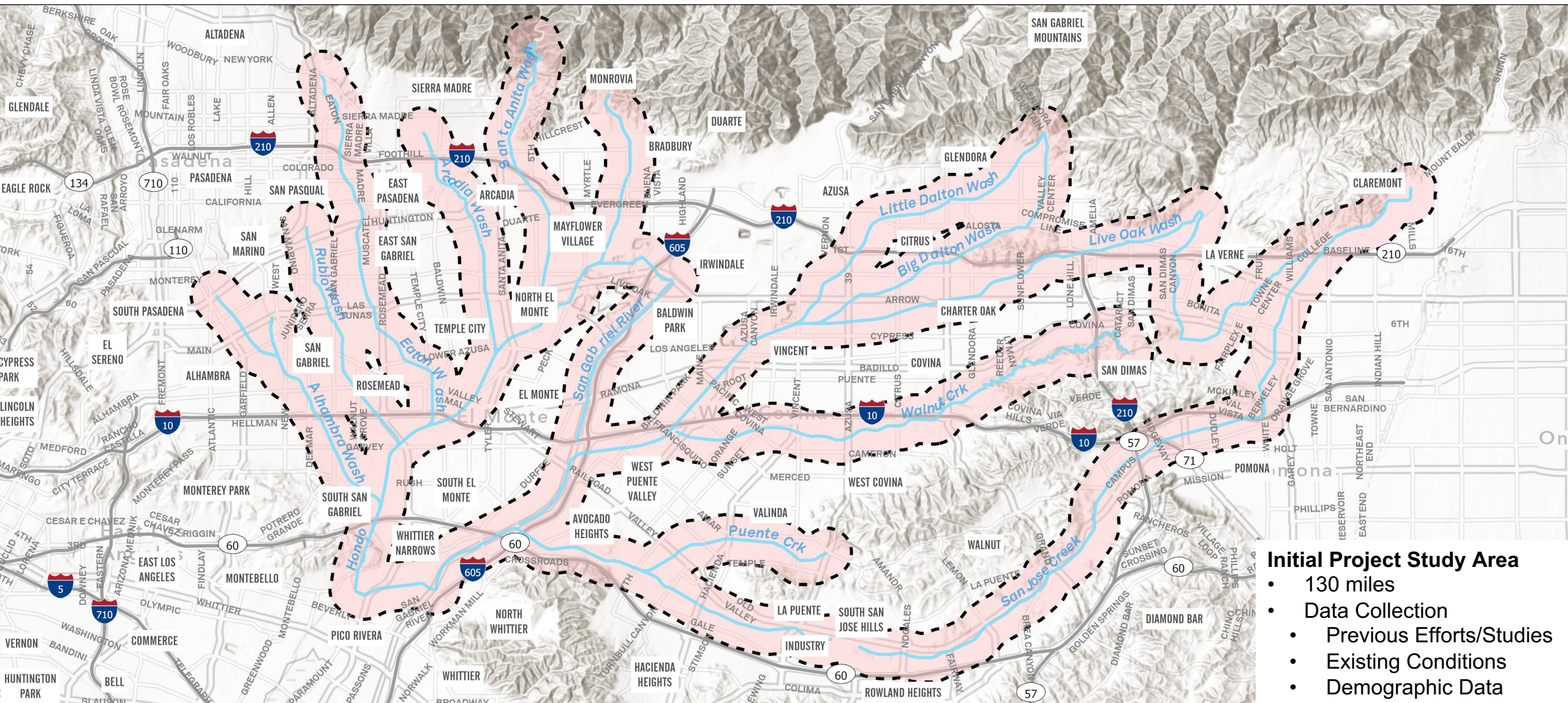
# 1

## Plan Overview





# San Gabriel Valley Planning Area

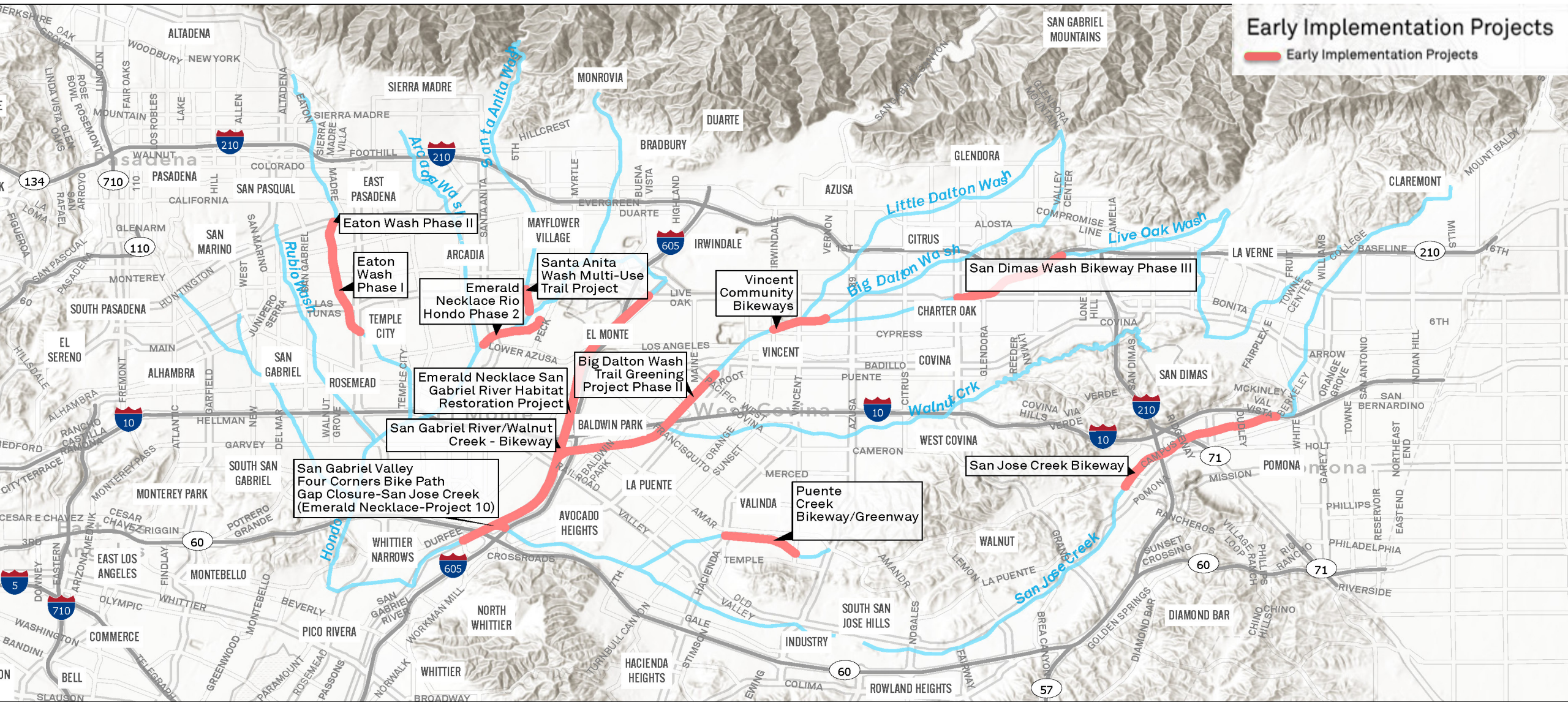


## Initial Project Study Area

- 130 miles
- Data Collection
  - Previous Efforts/Studies
  - Existing Conditions
  - Demographic Data

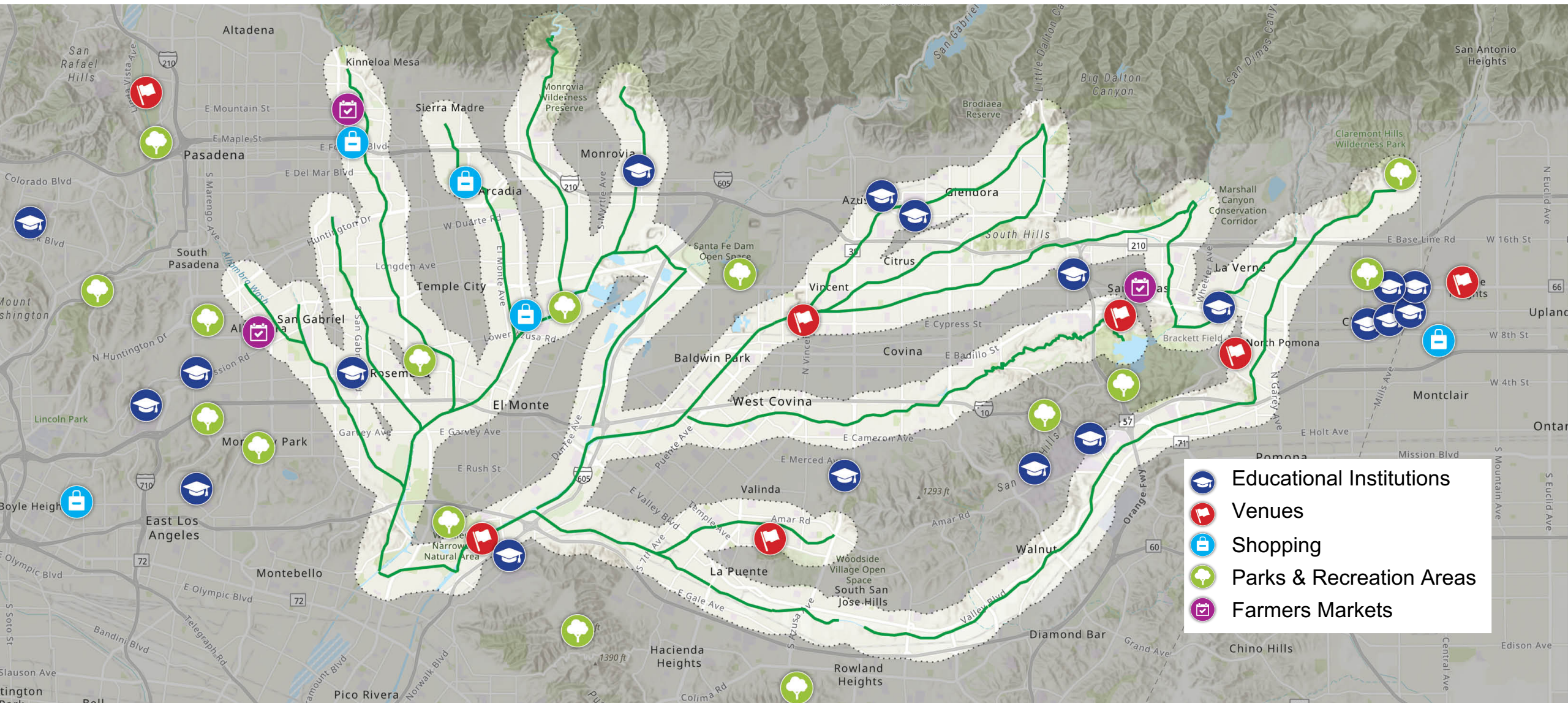


# Work in Progress





# Boosting Connections to Key Destinations



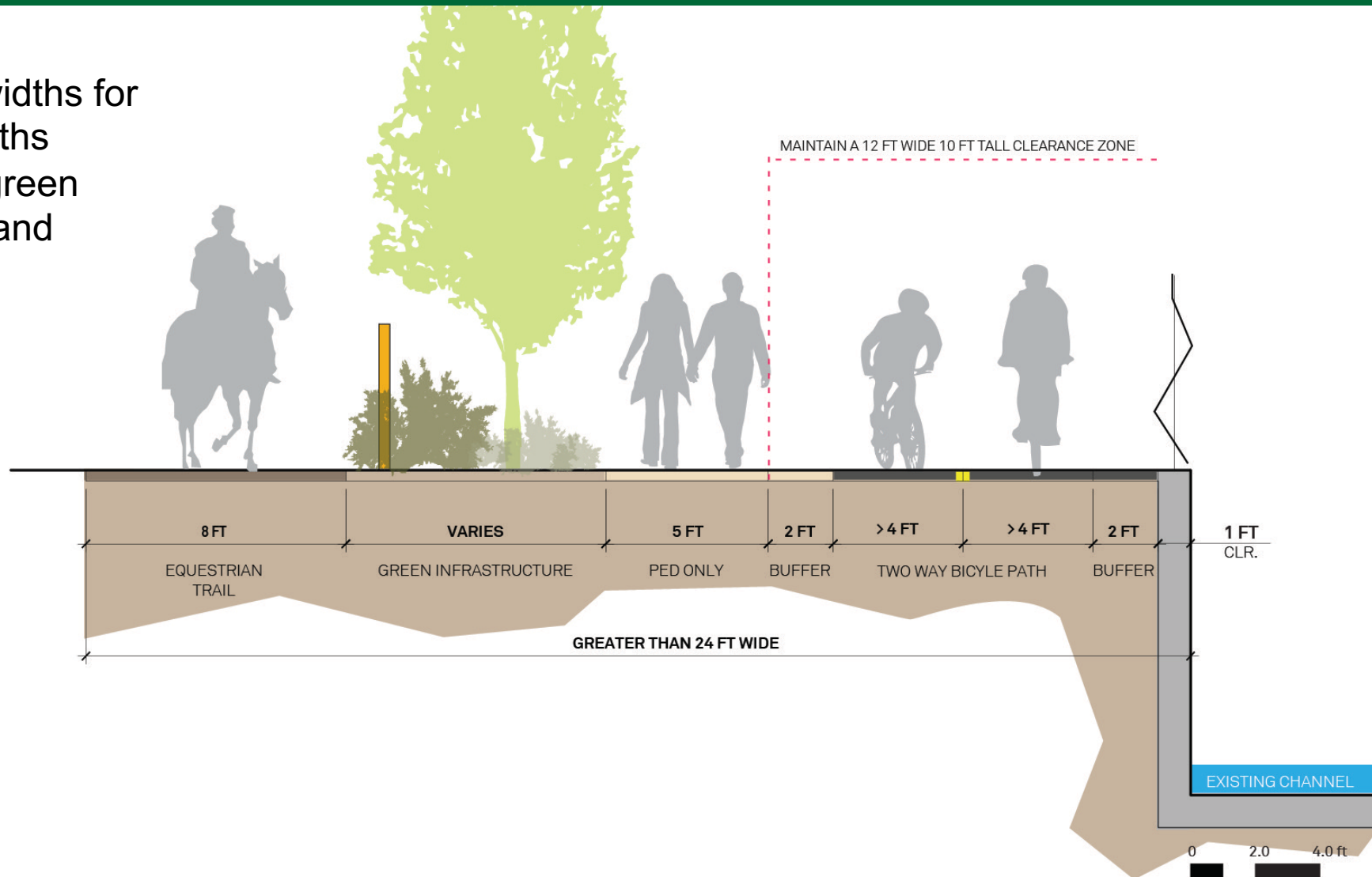


# Determining Greenway Focus Areas



# Example Greenway Layout

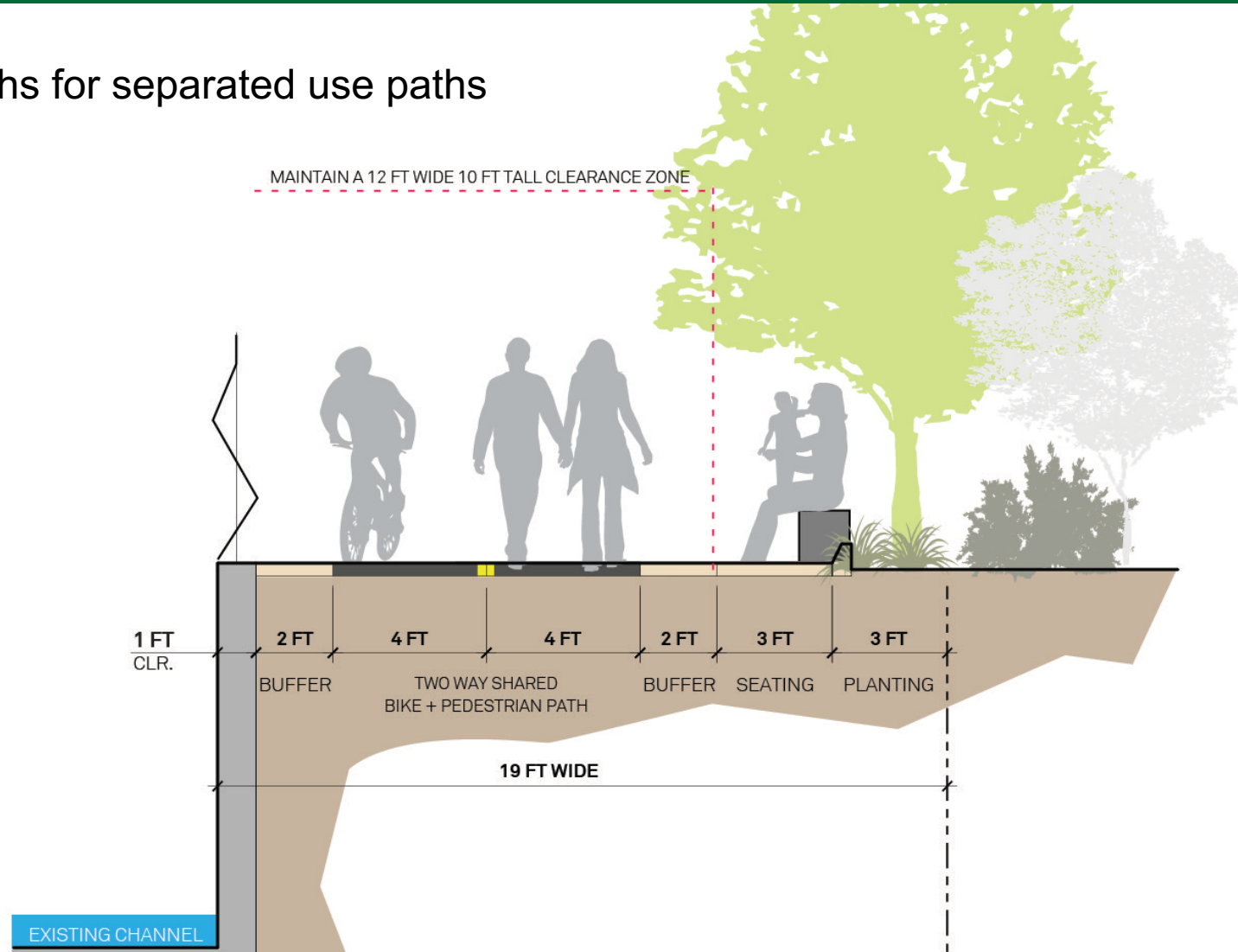
Comfortable widths for shared use paths and possible green infrastructure and landscape





# Example Greenway Layout

Comfortable widths for separated use paths





# Where Are We Now?

An aerial photograph of a park area. In the top left, there's a green field. In the center, a concrete channel runs horizontally. To the right of the channel is a playground with blue equipment on a black rubber mat. Below the channel is a basketball court with green and red markings. In the bottom left, there's a large, circular, grey-roofed structure, possibly a pool or a large storage tank. To the right of the basketball court is a swimming pool with a blue roof. The background shows some houses and trees.

Identified Project  
Focus Areas

Defined Options for  
Different Flood  
Control Channels

Developed  
Bike Path  
Alignments and  
Project Components

Developed  
Conceptual Design  
Projects



2

# Community Engagement





# Key Findings: Workshops, Surveys, and Pop-Up Events

## Safety & Security

- Lighting & signage
- Privacy for neighbors
- People experiencing homelessness

## Environmental Justice

- Avoid green gentrification
- Native plantings
- Restore habitat

## Amenities

- Shade
- Seating
- Water fountains
- Dog bags
- Restrooms

## Connectivity

- Existing bike lanes
- Local and regional parks
- Schools



# Key Findings: Workshops, Surveys, and Pop-Up Events

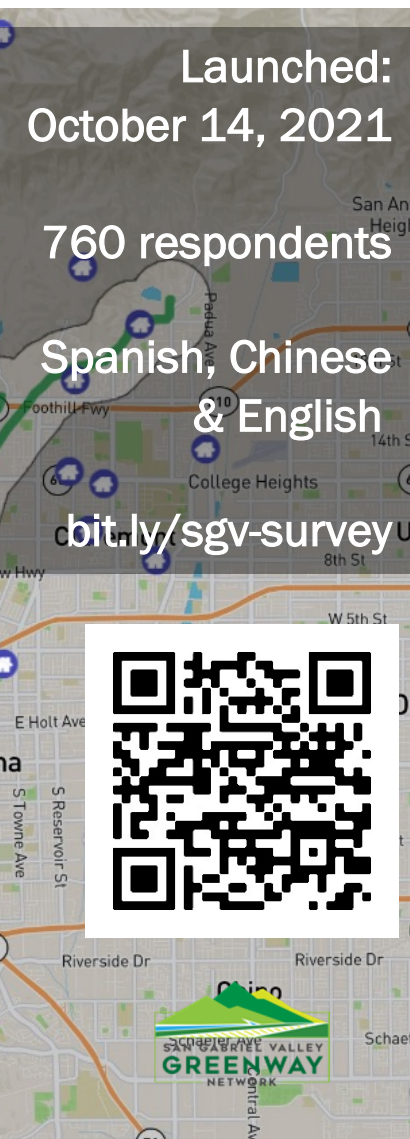
## Accessible to All Ages

- Use network for commuting to school or work
- Bike skills
- Older users and users with different abilities

## Multimodal Use

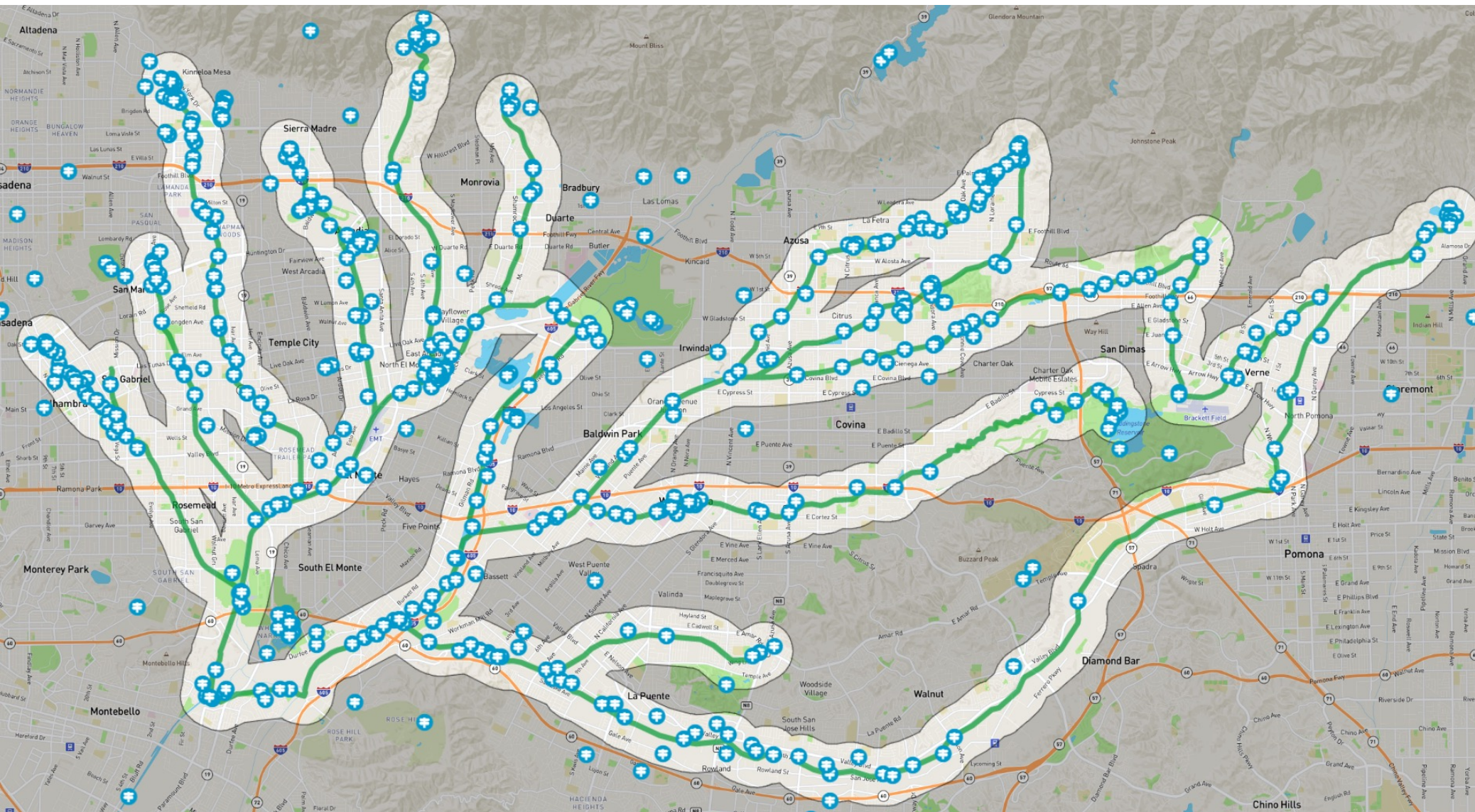
- Walking, biking, running, rollerblading, and skateboarding
- Ensure safe road crossings







# Map-Based Survey



## MAP POINTS

Home: 422

Uses: 735

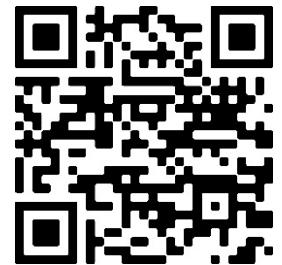
Amenities: 398

Access: 437

Destination: 425

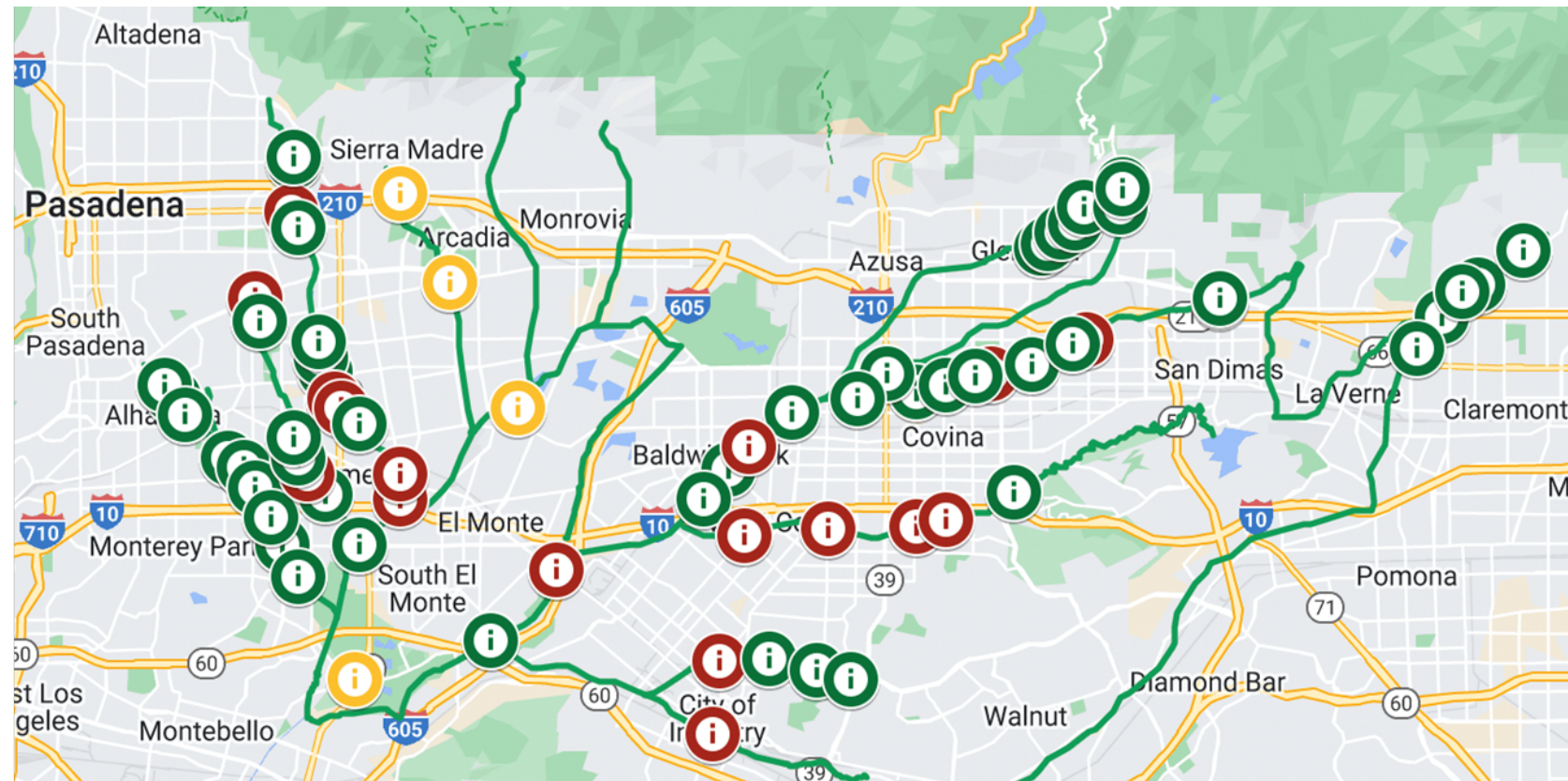
Equestrian: 58

Concerns: 142





# Posting Notices along the Channels





# Pop-Up Events





# Pop-Up Events





# Pop-Up Events

#	Location	Date	Day	Time	Status
1	Whittier Narrows Recreation Area	12/18/2021	Saturday	9:00 AM – 2:00 PM	Completed
2	Peter Schabarum Regional Park	1/8/2022	Saturday	9:00 AM – 2:00 PM	Completed
3	Santa Fe Dam Recreation Area	1/15/2022	Saturday	9:00 AM – 2:00 PM	Completed
4	South Hills Park - City of Glendora	2/5/2022	Saturday	8:00 AM – 1:00 PM	Completed
5	Encanto Park - City of Duarte	3/5/2022	Saturday	8:00 AM - 1:00 PM	Completed
6	Expo Center Trail – City of Industry	3/12/2022	Saturday	8:00 AM - 1:00 PM	Completed
7	West Covina Farmers' Market	4/2/2022	Saturday	9:00 AM – 1:00 PM	Completed
8	Covina Farmers' Market	4/8/2022	Friday	5:00 PM – 9:00 PM	Completed
9	South Pasadena Farmers' Market	4/14/2022	Thursday	4:00 PM – 8:00 PM	Completed
10	Easter Egg Hunt – City of La Puente	4/16/2022	Saturday	10:00 AM – 1:00 PM	Completed



# Pop-Up Events

#	Location	Date	Day	Time	Status
11	Earth Day - Andrews Community Park	4/23/2022	Saturday	9:00 AM – 1:00 PM	Completed
12	Earth Day - Hacienda Heights	4/23/2022	Saturday	11:00 AM – 12:00 PM	Completed
13	Arbor Day – San Dimas	4/30/2022	Saturday	10:00 AM - 1:00 PM	Completed
14	San Gabriel Library	6/16/2022	Thursday	1:00 PM – 5:00 PM	Confirmed
15	Baldwin Park Community Center	6/18/2022	Saturday	8:00 AM – 5:00 PM	Confirmed
16	El Monte Bus Station	6/23/2022	Thursday	12:00 PM – 6:00 PM	Planned
17	Santa Fe Dam - Overnight Camping	6/24/2022	Friday	5:00 PM - 8:00 PM	Planned
18	Bonelli Regional Park	TBD	TBD	TBD	Pending
19	Antonovich Trail	TBD	TBD	TBD	Pending
20	Walnut Creek Park	TBD	TBD	TBD	Pending
21	Peck Road Water Conservation Park	TBD	TBD	TBD	Pending



# Water Conservation Authority (WCA) Engagement

Partnering with:

- Active SGV
- Amigos de Los Rios
- Nature for All
- Women's Clubs

Maximizing meaningful contacts with SGV entities to reach historically underserved communities

- 25 workshops and events from March-June
- Sharing across digital networks
- June-July
  - 3 more bike rides around San Dimas, Big Dalton Wash, Alhambra Wash, and San Jose Creek
  - Final Events Scheduled



# Community Feedback Incorporated into Plan

	Concerns / Requests	Solutions
<b>Safety</b>	Lighting and signage	<ul style="list-style-type: none"> <li>Incorporated in Design Guidelines and Standards. Signage in Section 6, Lighting in Section 8.</li> </ul>
	Privacy for neighbors	<ul style="list-style-type: none"> <li>Incorporated in Design Guidelines and Standards. Fencing, privacy screens, gates in Section 8.</li> </ul>
	Encampments, people experiencing homelessness	<ul style="list-style-type: none"> <li>Refer to the Office of the Homeless Initiative for addressing encampments within the LACFCD (PW coordination with adjacent agencies or property owners, CEO, LAHSA and law enforcement for posting and cleanup). To be addressed in Design Guidelines and Standards.</li> </ul>
<b>Greenway Amenities</b>	Shade from sun, shelters from weather	<ul style="list-style-type: none"> <li>Incorporated in Design Guidelines and Standards, Section 8.</li> </ul>
	Seating and benches, places to rest	<ul style="list-style-type: none"> <li>Incorporated in Design Guidelines and Standards, Section 8.</li> </ul>
	Water fountains/stations	<ul style="list-style-type: none"> <li>Water fountains considered as decorative elements.</li> </ul>
	Access to restrooms	<ul style="list-style-type: none"> <li>Discussed in Design Guidelines and Standards.</li> </ul>
	Educational or historical signage/kiosks	<ul style="list-style-type: none"> <li>Incorporated in Design Guidelines and Standards. Specific signage programs have not been developed but are under consideration.</li> </ul>
<b>Bike Amenities</b>	Racks, bike parking	<ul style="list-style-type: none"> <li>Incorporated in Design Guidelines and Standards, Section 8.</li> </ul>
	Bike rentals, day rental stations	<ul style="list-style-type: none"> <li>Not currently incorporated in Design Guidelines and Standards but are under consideration.</li> </ul>



# Community Feedback Incorporated into Plan

	Concerns / Requests	Solutions
<b>Connectivity</b>	Connections to existing bikeways	• Incorporated in Design Guidelines and Standards, Bike Path Alternatives, and Conceptual Design Projects.
	Signage to key locations, mileage	• Incorporated in Design Guidelines and Standards, Section 8.
	Uniform branding/signage	• Incorporated in Design Guidelines and Standards, Section 8.
	Connections to parks	• Incorporated in Design Guidelines and Standards, Bike Path Alternatives, Project Components, and Conceptual Design Projects.
	Connections to transit	• Discussed in Design Guidelines and Standards.
	Automobile parking	• Discussed in Design Guidelines and Standards.
	Suggested routes to schools	• Incorporation of pedestrian maps or school routes under consideration.
<b>Flora / Fauna</b>	Native plants	• Incorporated in Design Guidelines and Standards.
	Habitat restoration	• Providing habitat is discussed in Design Guidelines and Standards.
	Greenway as wildlife corridors	• Incorporated in Design Guidelines and Standards.
<b>Access</b>	Gateway entrances	• Incorporated in Design Guidelines and Standards, Section 8.
	Parking for cars	• Discussed in Design Guidelines and Standards.
	Safe street crossings	• Incorporated in Design Guidelines and Standards, Section 7.



3

# Conceptual Designs Overview





# Proposed Conceptual Design Projects – Overview Map

Project Code	Location
A15	Vincent Lugo Park
ET13	Eaton Blanche Park
BD21	Hilda Solis
TH10	Fairplex
WC37-38	Syhr Park
ET2	Spreading Grounds
SD23	Arrow High
SD26	Hollenbeck Park
WC47	Pocket Park
SJ5	Pocket Park

# Proposed Conceptual Design Projects – Overview Map

Project Code	Location
A15	Vincent Lugo Park
ET13	Eaton Blanche Park
BD21	Hilda Solis
TH10	Fairplex
WC37-38	Syhr Park
ET2	Spreading Grounds
SD23	Arrow High
SD26	Hollenbeck Park
WC47	Pocket Park
SJ5	Pocket Park

**LEGEND**

- RECOMMENDED MULTI-BENEFIT PROJECT COMPONENTS FOR CONCEPTUAL DESIGN (Orange circle)
- ALTERNATIVE MULTI-BENEFIT PROJECT COMPONENTS FOR CONCEPTUAL DESIGN (Grey circle)
- PROPOSED BIKEWAY EXTENTS PAIRED WITH RECOMMENDED CONCEPTUAL PROJECTS (Black line)
- PROPOSED BIKEWAY ALTERNATIVES**
- ROW WIDTH AVAILABILITY - ON CHANNEL**
- LESS THAN 8 FEET ROW OR ROAD CROSSING (Red line)
- 8-13 (Orange line)
- 13-17 (Yellow line)
- 17-19 (Light green line)
- 19-24 (Green line)
- GREATER THAN OR EQUAL 24 (Dark green line)
- OFF CHANNEL ALIGNMENT (Blue line)
- EARLY IMPLEMENTATION PROJECTS**
- COMPLETE (Pink line)
- DESIGN (Light green line)
- PERMITTING (Blue line)
- PERMITTING/SEEKING CONSTRUCTION FUNDING (Yellow line)
- PLANNING (Purple line)

# Proposed Conceptual Design Projects – Overview Map

Project Code	Park Name
A15	Vincent Lugo Park
ET13	Eaton Blanche Park
BD21	Hilda Solis
TH10	Fairplex
WC37-38	Syhrre Park
ET2	Spreading Grounds
SD23	Arrow High
SD26	Hollenbeck Park
WC47	Pocket Park
SJ5	Pocket Park

**LEGEND**

- RECOMMENDED MULTI-BENEFIT PROJECT COMPONENTS FOR CONCEPTUAL DESIGN (Orange circle)
- ALTERNATIVE MULTI-BENEFIT PROJECT COMPONENTS FOR CONCEPTUAL DESIGN (Grey circle)
- PROPOSED BIKEWAY EXTENTS PAIRED WITH RECOMMENDED CONCEPTUAL PROJECTS (Black line)
- PROPOSED BIKEWAY ALTERNATIVES**
- ROW WIDTH AVAILABILITY - ON CHANNEL**
- LESS THAN 8 FEET ROW OR ROAD CROSSING (Red line)
- 8-13 (Orange line)
- 13-17 (Yellow line)
- 17-19 (Light green line)
- 19-24 (Green line)
- GREATER THAN OR EQUAL 24 (Dark green line)
- OFF CHANNEL ALIGNMENT (Blue line)
- EARLY IMPLEMENTATION PROJECTS**
- COMPLETE (Pink line)
- DESIGN (Light green line)
- PERMITTING (Blue line)
- PERMITTING/SEEKING CONSTRUCTION FUNDING (Yellow line)
- PLANNING (Purple line)



# Bike Path Alignment Example – Alhambra Wash





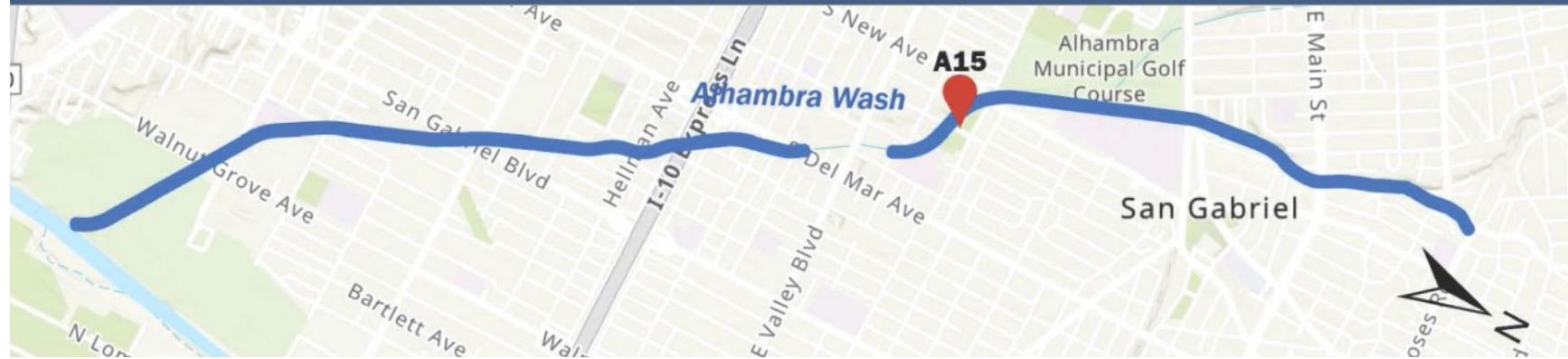
# Project Component Example – Vincent Lugo Park

## Vincent Lugo Park Retrofit and Enhancements

Channel: Alhambra

Reach: Alhambra Wash 2

Project ID: A15



### WEIGHTED FEASIBILITY OF CHANNEL REACH

Army Corps Channel	Community Score	Circulation Score	Environment Score	Synergy Score	Feasibility Score
Yes	1.2	1.4	0.3	0.3	12.1

## Potential Project Elements

- Offsite stormwater management opportunities
- Neighborhood access to Channel ROW





# Multi-use Greenway Development

## Example Amenities



Directional signage doubles as footrest for bicyclists



Informational signage indicating location within overall corridor



Signage with corridor mileage markers

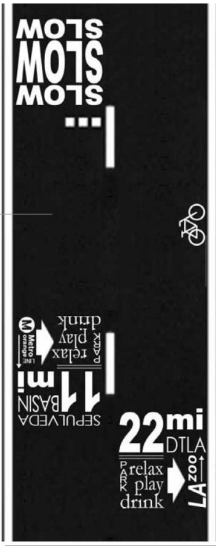


Fig 5.17 Bikeway embedded infographics



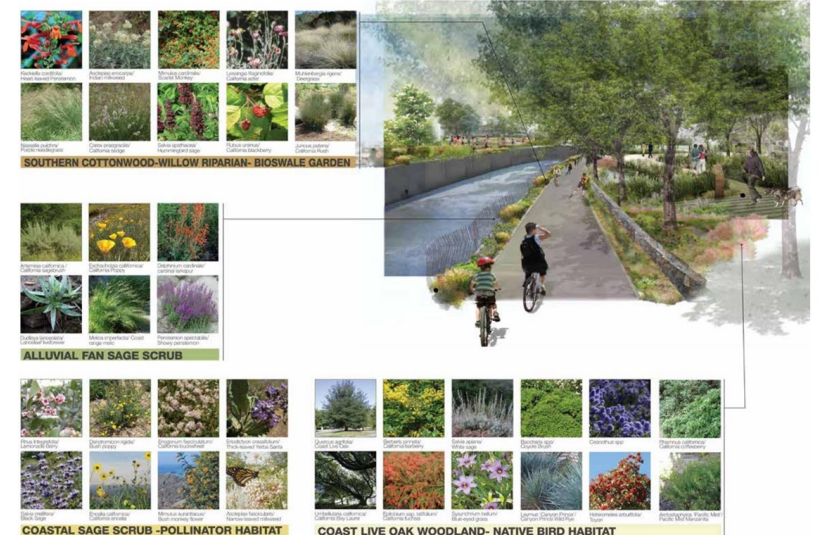
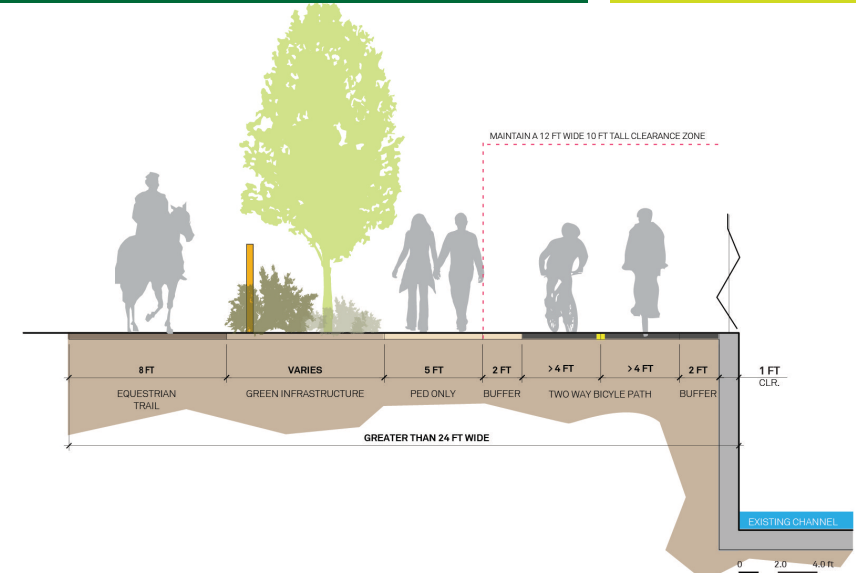
Existing LA River signage with local habitat and ecological information



Corten steel signage with plant species information



Directional signage with distance information





# 4

## Next Steps





# Next Steps for the Plan

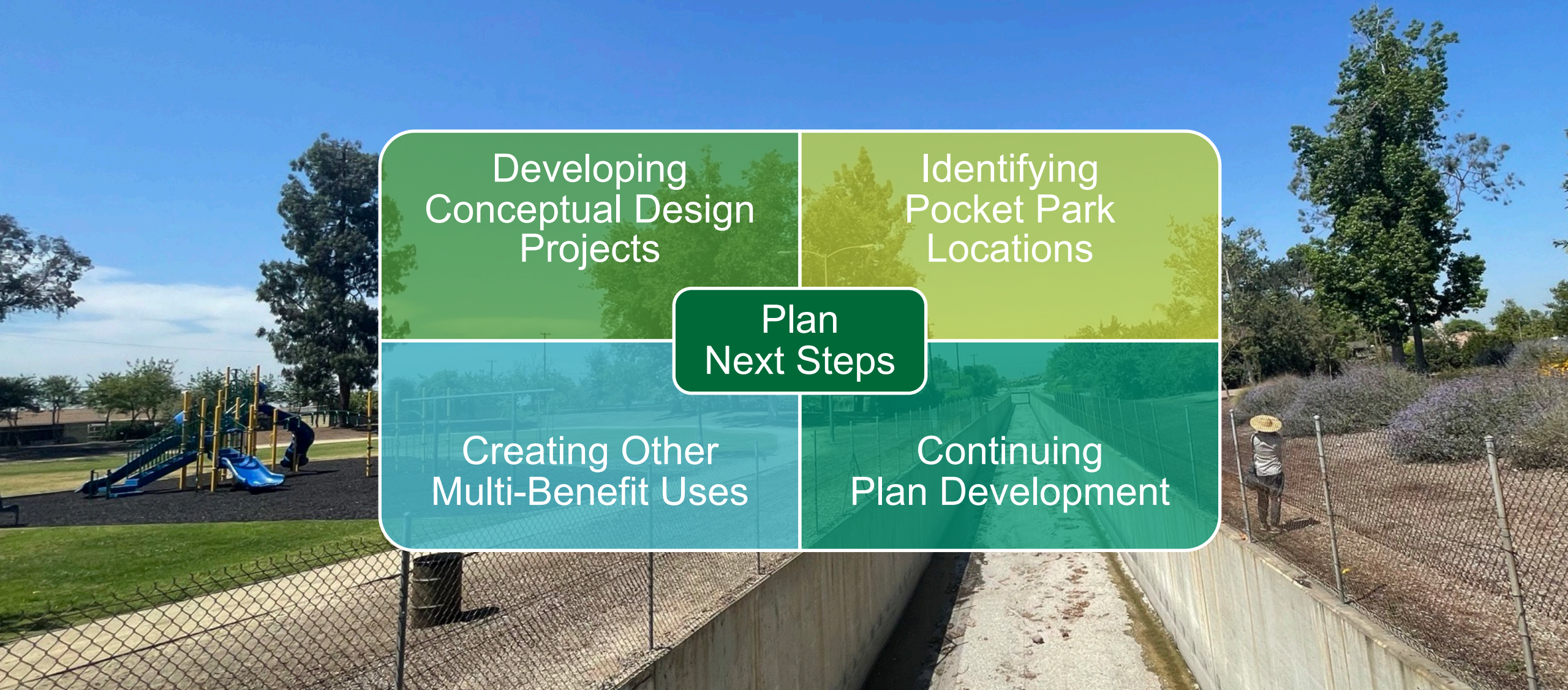
Developing  
Conceptual Design  
Projects

Identifying  
Pocket Park  
Locations

Plan  
Next Steps

Creating Other  
Multi-Benefit Uses

Continuing  
Plan Development





# Next Steps for the Community



Look for our  
Pop-up Events  
throughout  
San Gabriel  
Valley

Community  
Engagement  
Sessions  
with WCA

Environmental  
Public Scoping  
Meetings in  
Summer and  
Winter 2022

Draft Greenway  
Network Plan  
Public Review in  
Winter 2022



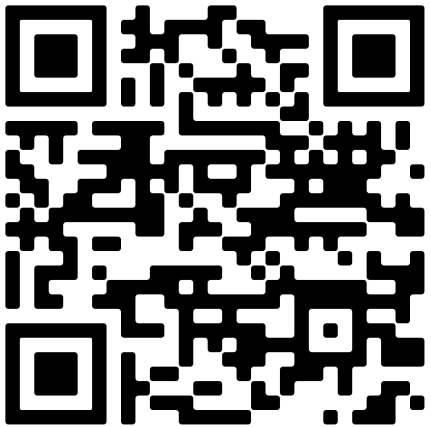


# *Additional Questions or Comments:*

Email: [sgvgreenway@pw.lacounty.gov](mailto:sgvgreenway@pw.lacounty.gov)

Contact: [Julian Juarez](#) at (626) 458-7149

Website: [www.sgvgreenway.org](http://www.sgvgreenway.org)



*Please remember to take the Map-Based Survey!*

<https://bit.ly/sgv-survey>



5

# Discussion

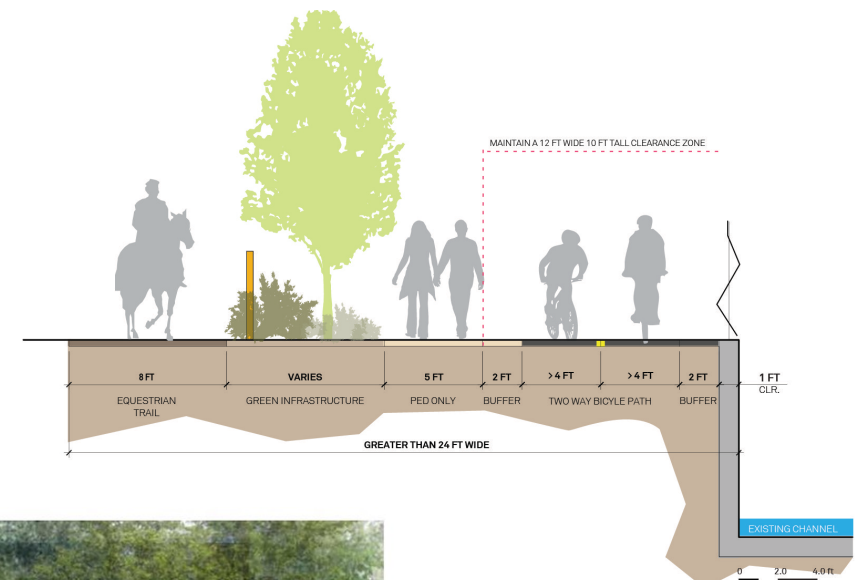




What suggestions  
do you have to  
improve the  
bike path  
alignments?

How would you  
encourage use?

## Proposed Bike Path Alignments





# What would you include as potential parks and greenway amenities?

## Project Components and Potential Park Opportunities





# Discussion Questions

What specific amenities or locations would you recommend for the community at each project site?

## Safety

- What specific **safety amenities or locations** (e.g., lighting and signage or privacy features)?

## Greenway Amenities

- What specific **greenway amenities or locations** (e.g., shade shelters, seating and benches, water foundations, educational or historical signage/kiosks, exercise stations, restrooms, etc.)?

## Bike Amenities

- What specific **bike amenities or locations** (e.g., bike racks, parking, rental stations, etc.)?

## Connectivity

- What specific **connections or locations** (e.g., connections to existing bikeways, parks, equestrian trails, transit, parking)?

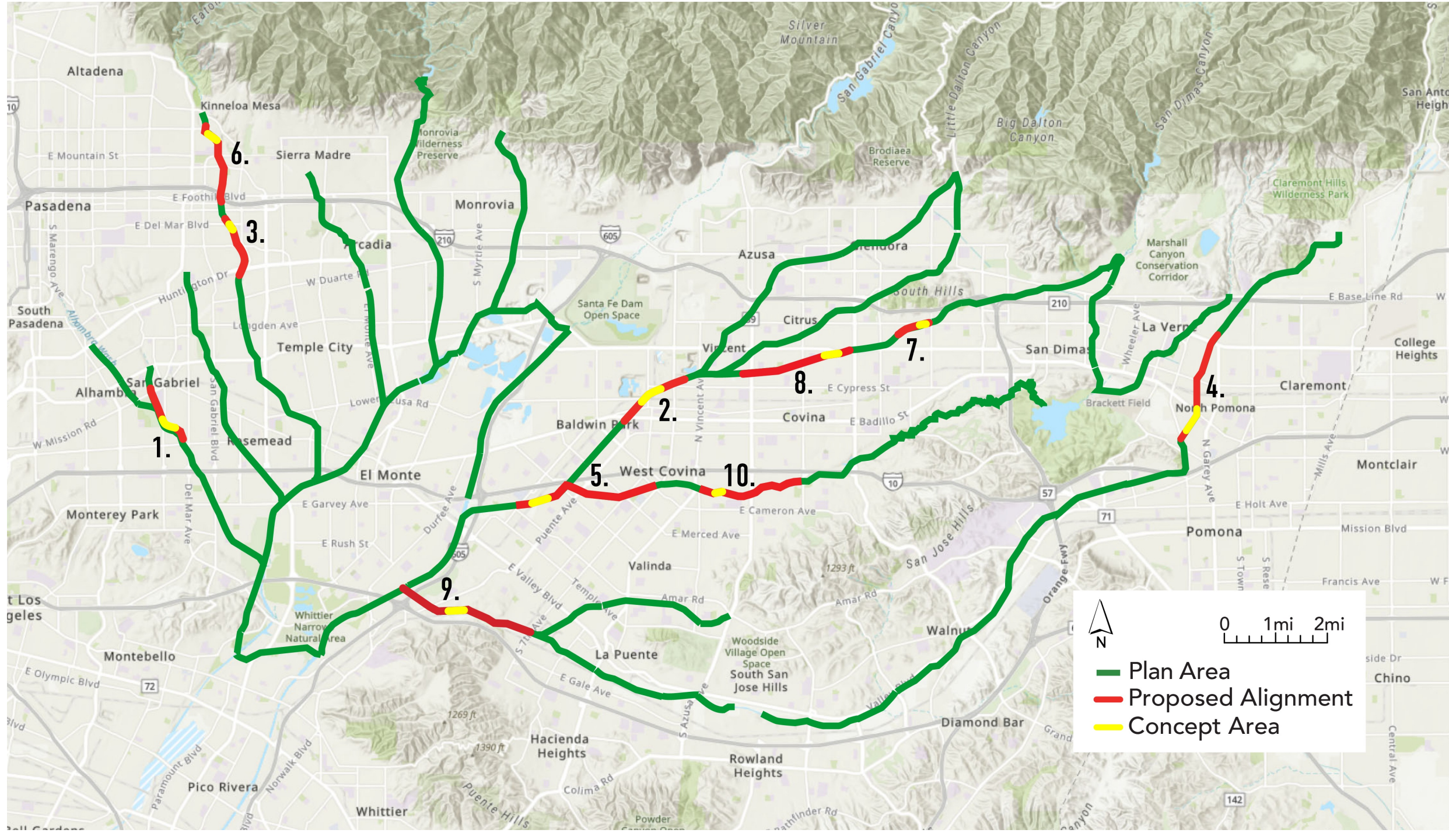
## Flora/Fauna

- What specific **plants or habitat locations** (e.g., native plants, habitat restoration)?

## Access

- What specific **access amenities or locations** (e.g., gateway entrances, parking, street crossings)?

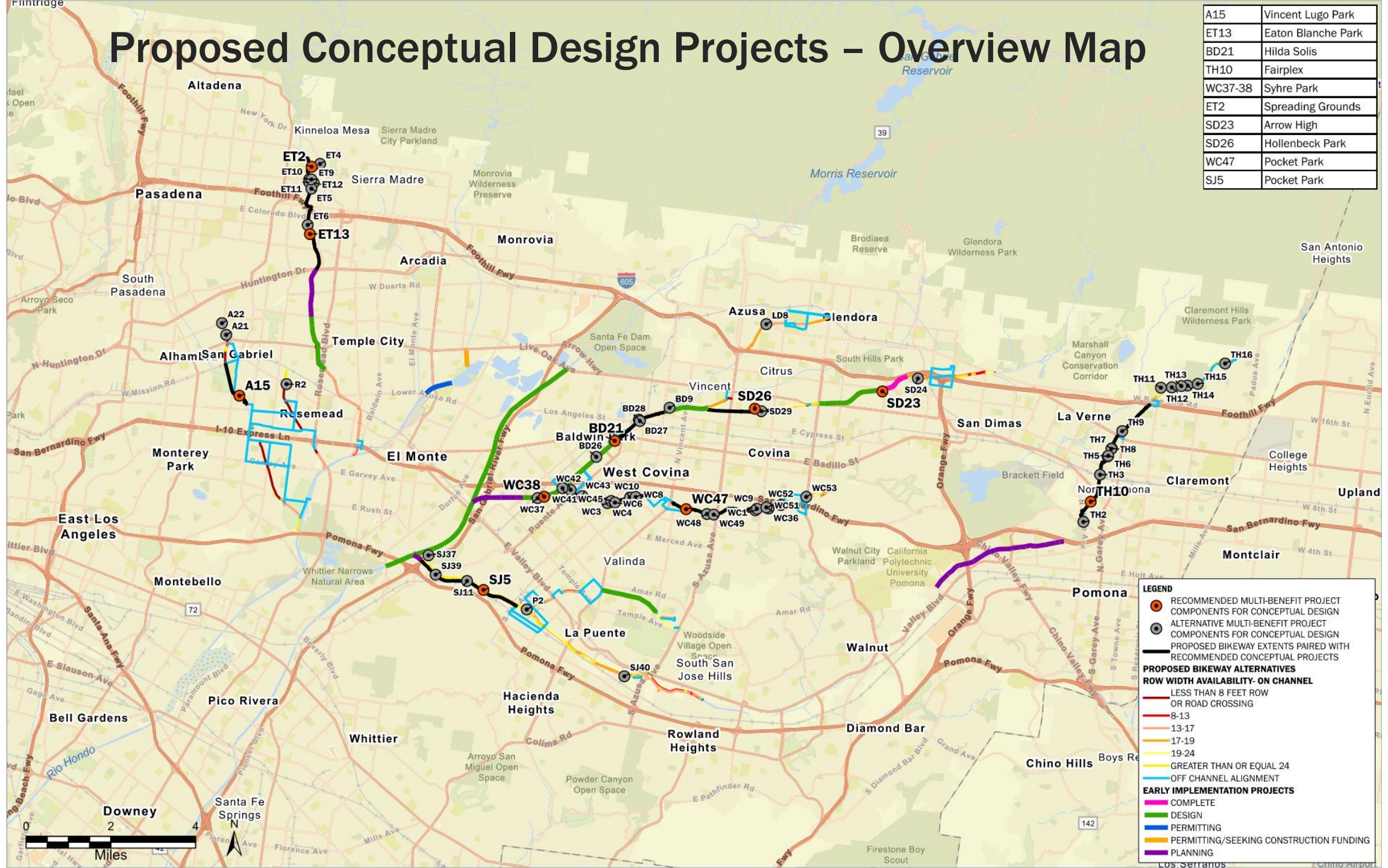






# Proposed Conceptual Design Projects – Overview Map

A15	Vincent Lugo Park
ET13	Eaton Blanche Park
BD21	Hilda Solis
TH10	Fairplex
WC37-38	Sybre Park
ET2	Spreading Grounds
SD23	Arrow High
SD26	Hollenbeck Park
WC47	Pocket Park
SJ5	Pocket Park





6

# Interactive Open House

