

San Gabriel Valley Greenway Network WORKSHOP 2



Presented by: Los Angeles County Public Works

Dates: February 16, 2022
February 22, 2022

Recording

Participants (3)

- A Ana (Me) **Unmute** **More >** **Rename**
- MP MIG Pasadena 2 (Host)
- AP Ana Padilla | MIG (Interpreter) ES

Invite Unmute Me Merge to Meeting Window

RENAME YOURSELF

Chat

To: Everyone **CHAT HERE**

Type message here...

File

✓ Off

- EN English
- ES Spanish

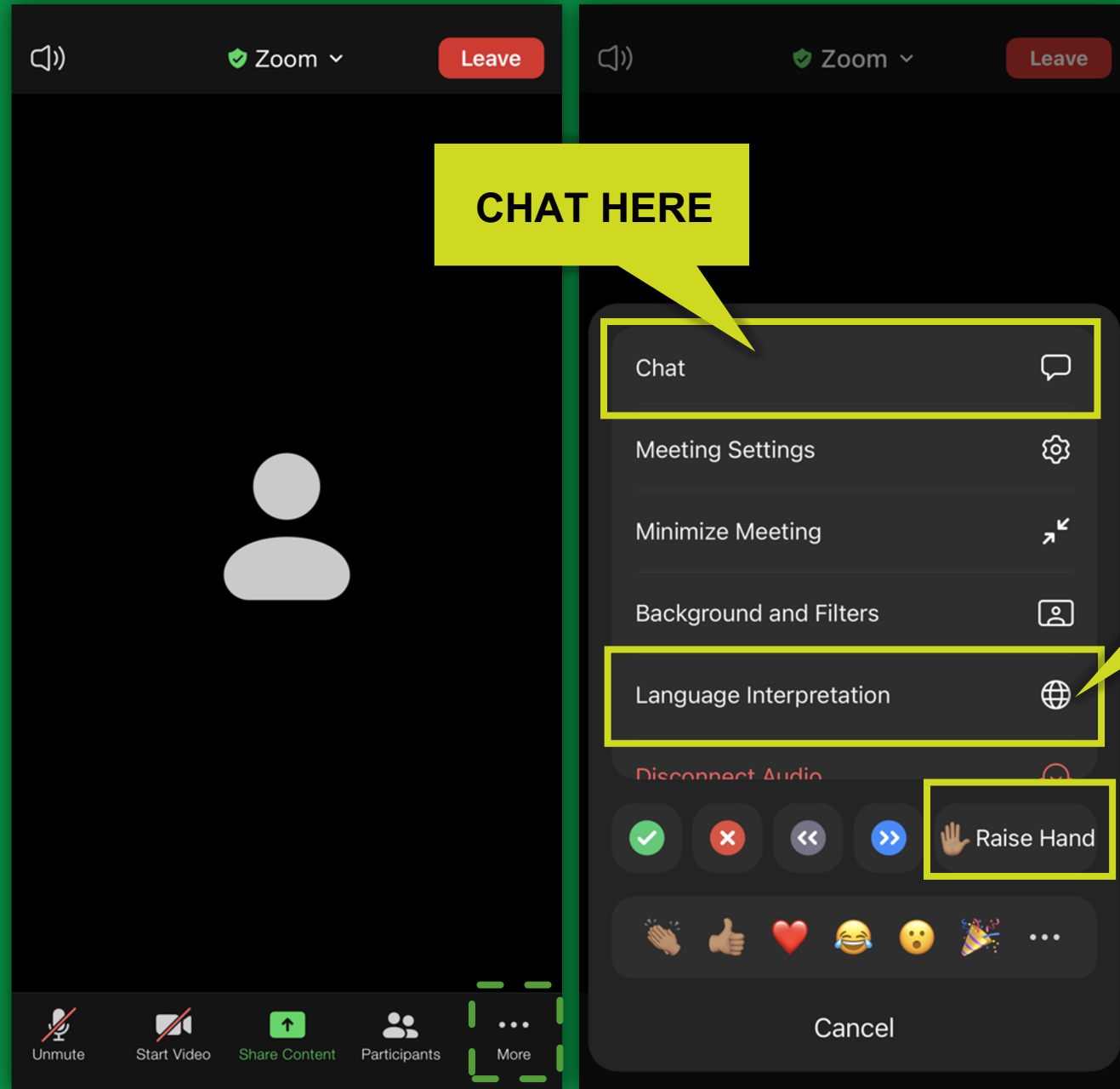
Mute Original Audio

**LANGUAGE INTERPRETATION
INTERPRETACION DE IDIOMAS**

Raise Hand

Unmute Start Video

Participants 3 Chat Share Screen Record Interpretation Reactions Leave



CHAT HERE

**LANGUAGE
INTERPRETATION
INTERPRETACION
DE IDIOMAS**

Raise Hand



Land Acknowledgement



WELCOME!





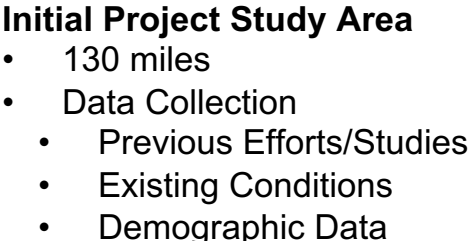
AGENDA

- 01 **Plan Overview** | *The Greenway Network*
- 02 **Community Engagement** | *Key Findings*
- 03 **Bike Path Alignments
and Project Components** | *Design Alternatives*
- 04 **Small Group Discussion** | *By Location*
- 05 **Next Steps**

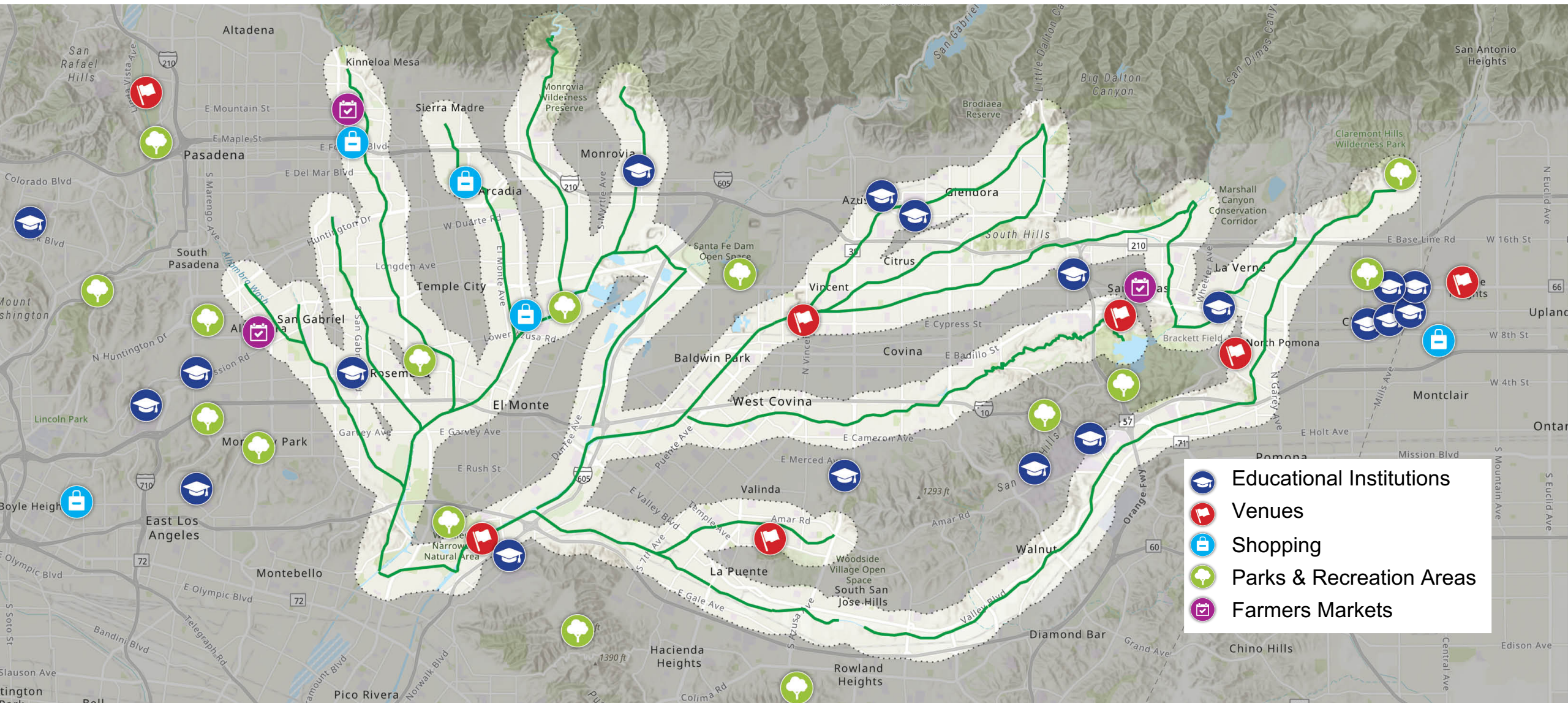
1

Plan Overview





Boosting Connections to Key Destinations

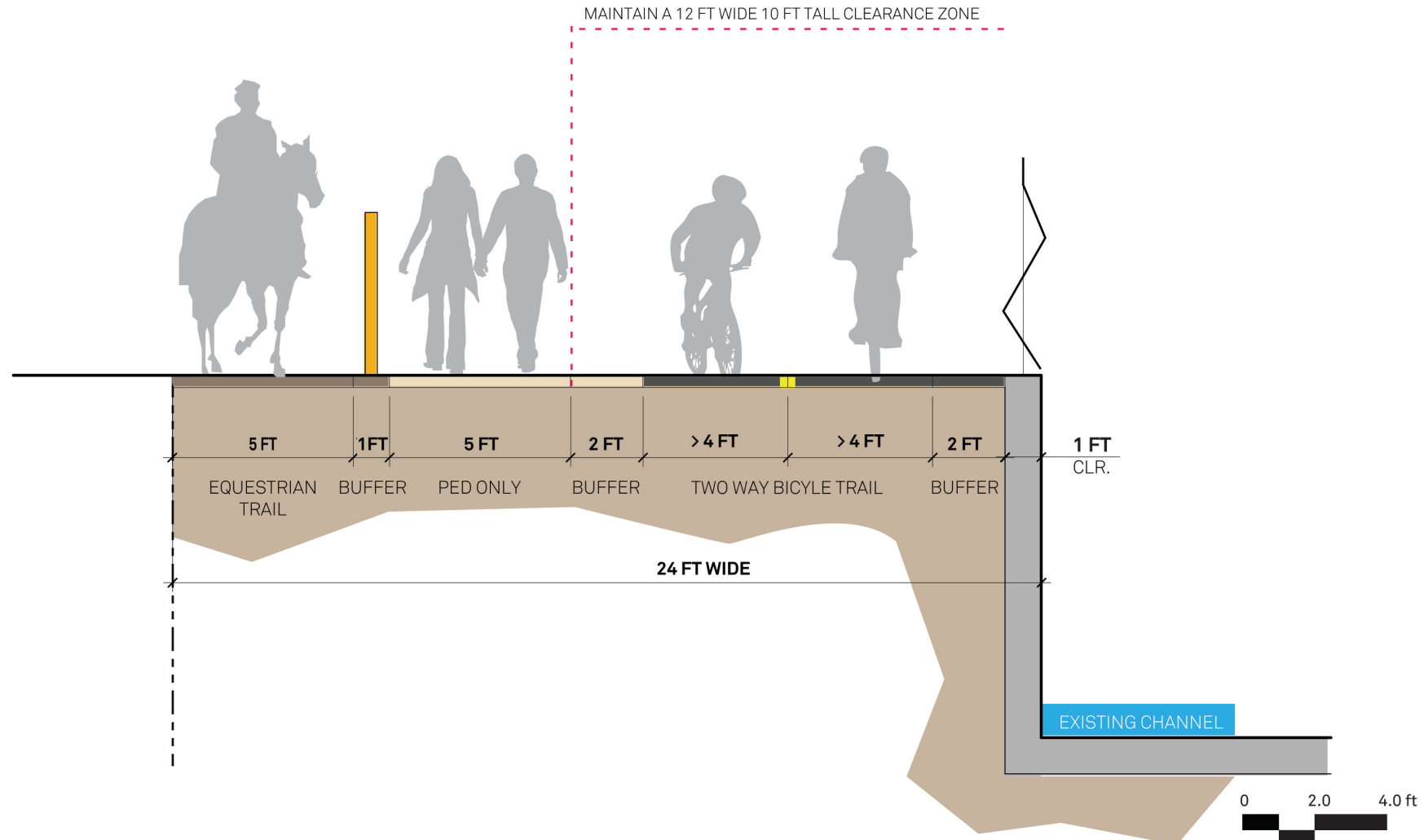


Determining Greenway Focus Areas



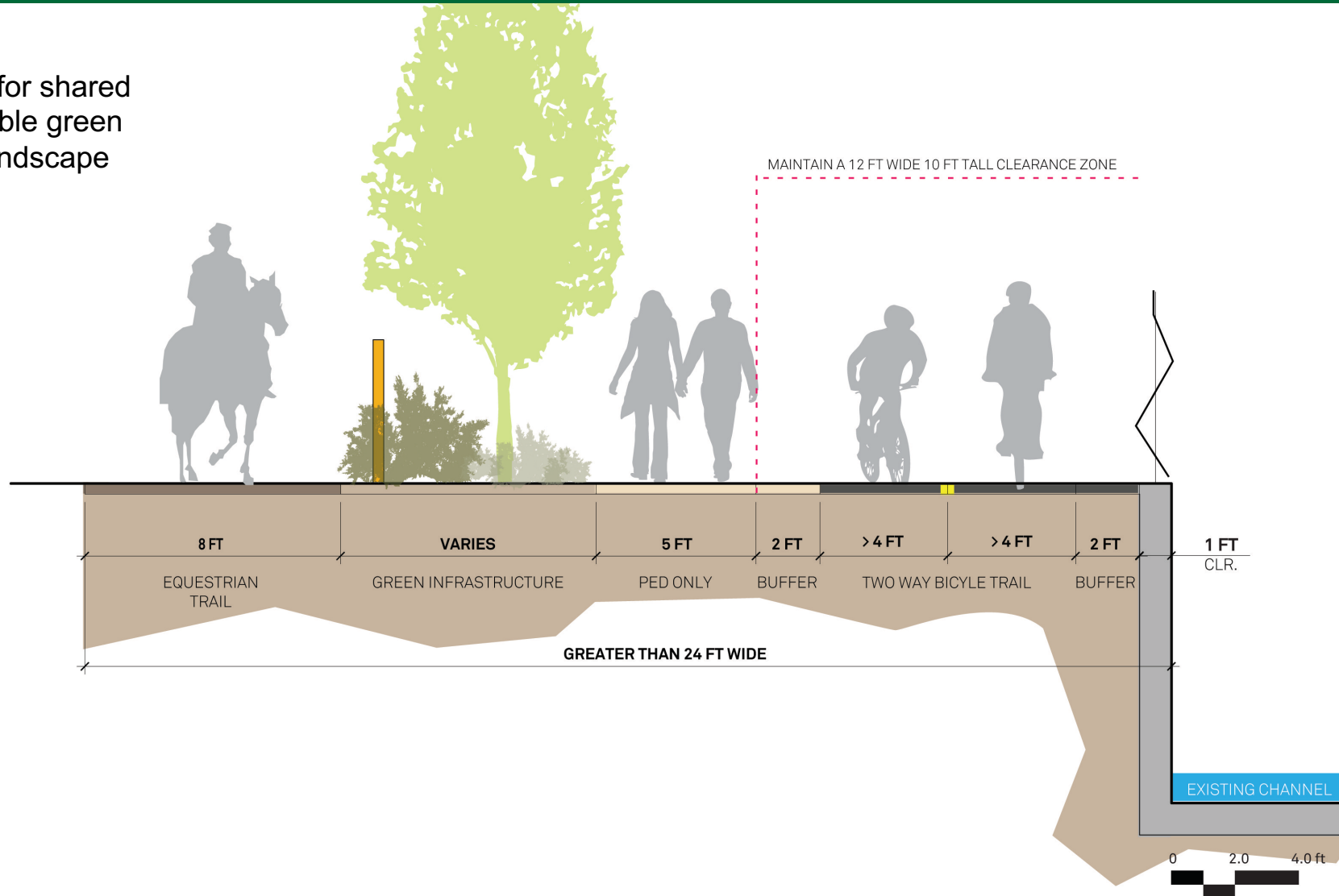
Example Greenway Layout

Comfortable widths for separated use paths




Example Greenway Layout

Comfortable widths for shared use paths and possible green infrastructure and landscape



Where Are We Now?

An aerial photograph of a park area. In the top left, there's a green rectangular area labeled 'Identified Project Focus Areas'. To its right is a larger green rectangular area labeled 'Defined Options for Different Flood Control Channels'. Further right is a teal rectangular area labeled 'Developed Bike Path Alignments'. On the far right is a light blue rectangular area labeled 'Developed Project Components'. The background shows a park with a playground, a basketball court, and a swimming pool.

Identified Project
Focus Areas

Defined Options
for Different
Flood Control
Channels

Developed
Bike Path
Alignments

Developed
Project
Components

2

Community Engagement



Key Findings: Workshops, Surveys, and Pop-Up Events

Safety & Security

- Lighting & signage
- Privacy for neighbors
- People experiencing homelessness

Environmental Justice

- Avoid green gentrification
- Native plantings
- Restore habitat

Amenities

- Shade
- Seating
- Water fountains
- Dog bags
- Restrooms

Connectivity

- Existing bike lanes
- Local and regional parks
- Schools

Key Findings: Workshops, Surveys, and Pop-Up Events

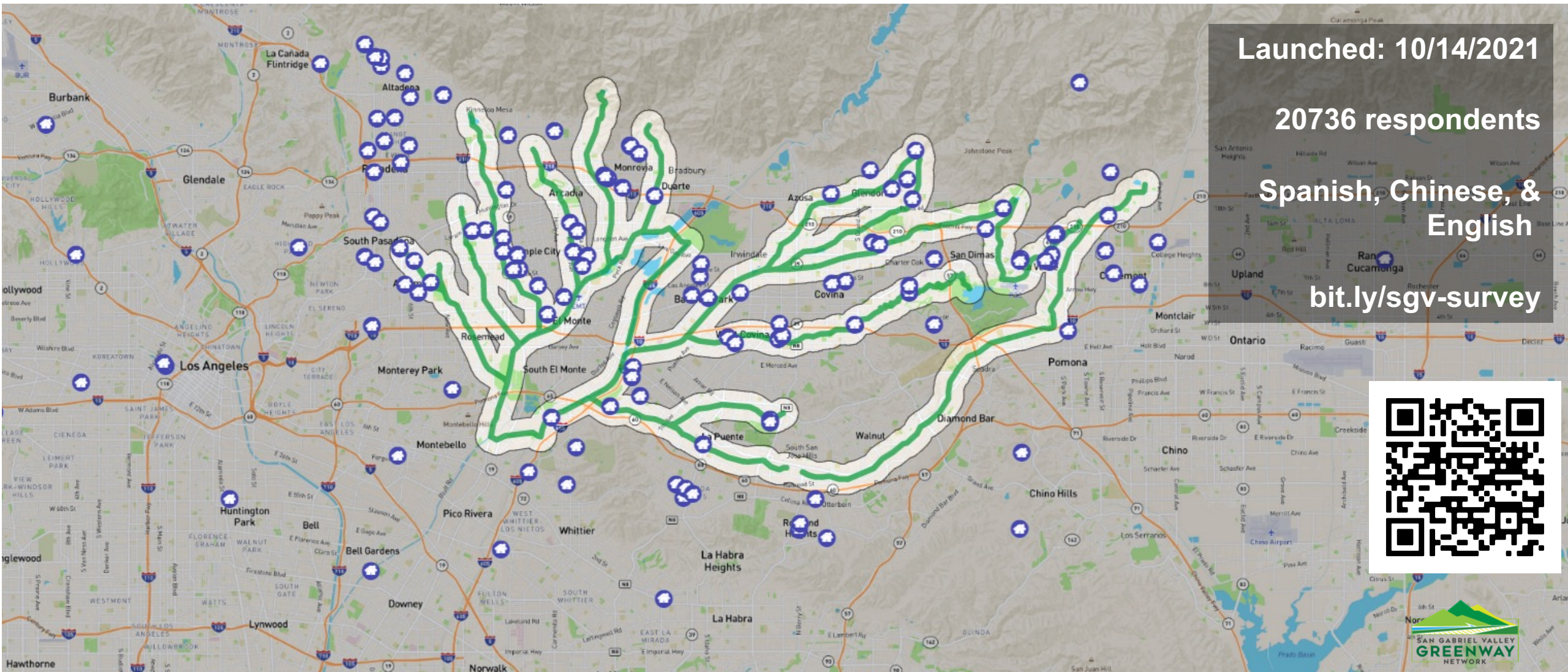
Accessible to All Ages

- Use network for commuting to school or work
- Bike skills
- Older users and users with different abilities

Multimodal Use

- Walking, biking, running, rollerblading, and skateboarding
- Ensure safe road crossings

Map-Based Survey



Pop-Up Events



Pop-Up Events

Location	Date	Day	Time	Status
Whittier Narrows Recreation Area	12/18/2021	Saturday	9:00 AM – 2:00 PM	Completed
Peter Schabarum Regional Park	1/8/2022	Saturday	9:00 AM – 2:00 PM	Completed
Santa Fe Dam Recreation Area	1/15/2022	Saturday	9:00 AM – 2:00 PM	Completed
South Hills Park	2/5/2022	Saturday	8:00 AM – 1:00 PM	Completed
Peck Road Water Conservation Park	2/26/2022	Saturday	8:00 AM - 1:00 PM	Confirmed
Encanto Park	3/5/2022	Saturday	8:00 AM - 1:00 PM	Confirmed
City of Industry Expo Center Trail	3/12/2022	Saturday	8:00 AM - 1:00 PM	Confirmed
Bonelli Regional Park	3/19/2022	Saturday	8:00 AM – 1:00 PM	Postponed
South Pasadena Farmers' Market	4/14/2022	Thursday	4:00 PM – 8:00 PM	Confirmed

Pop-Up Events

Location	Date	Day	Time	Status
Antonovich Trail	TBD	TBD	TBD	TBD
Walnut Creek Park	TBD	TBD	TBD	TBD
Claremont Hills / Thompson Trail	TBD	TBD	TBD	TBD
Rose Bowl Walking Loop	TBD	TBD	TBD	TBD
Arcadia County Park	TBD	TBD	TBD	TBD
Peck Road Water Conservation Park	TBD	TBD	TBD	TBD
Monrovia Farmers Market	TBD	TBD	TBD	TBD
Pasadena Farmers Market	TBD	TBD	TBD	TBD
Alhambra Farmers Market	TBD	TBD	TBD	TBD
San Dimas Farmers Market	TBD	TBD	TBD	TBD

Water Conservation Authority (WCA) Engagement Plan

- Conducting 16 workshops
 - Between February – July 2022
- Maximizing meaningful contacts with SGV entities to reach historically underserved communities
 - Partnering with:
 - Active SGV
 - Amigos de los Rios
 - Nature for All
 - Women's Clubs

3

Bike Path Alignments and Project Components





Bike Path Alignment Example – Walnut Creek



Bike Path Alignment Example – Alhambra Wash



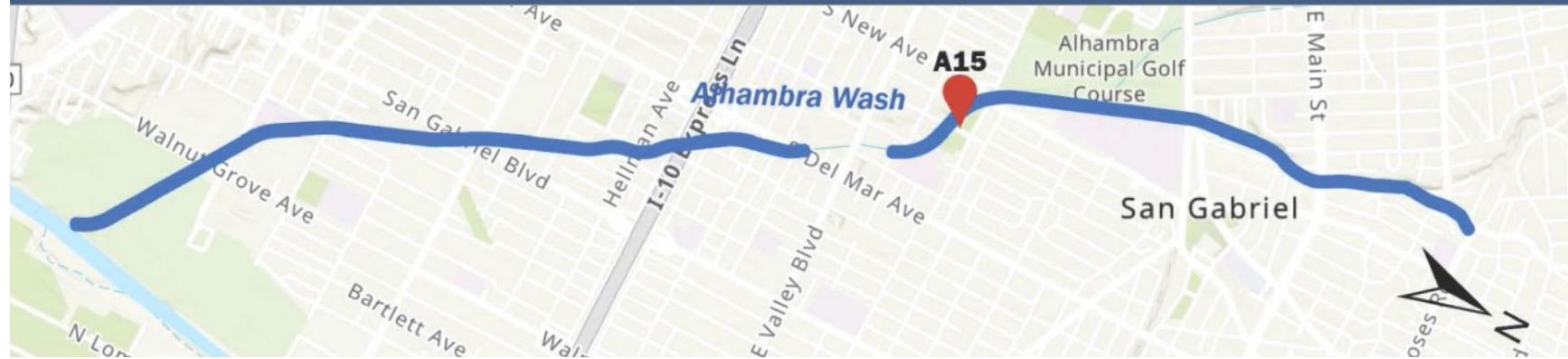
Project Component Example – Vincent Lugo Park

Vincent Lugo Park Retrofit and Enhancements

Channel: Alhambra

Reach: Alhambra Wash 2

Project ID: A15



WEIGHTED FEASIBILITY OF CHANNEL REACH

Army Corps Channel	Community Score	Circulation Score	Environment Score	Synergy Score	Feasibility Score
Yes	1.2	1.4	0.3	0.3	12.1

Potential Project Elements

- Offsite stormwater management opportunities
- Neighborhood access to Channel ROW



Project Component Example – Alhambra Gateway

Future North Alhambra Wash Gateway Park at Alhambra Rd.

Channel: Alhambra

Reach: Alhambra Wash 1

Project ID: A22

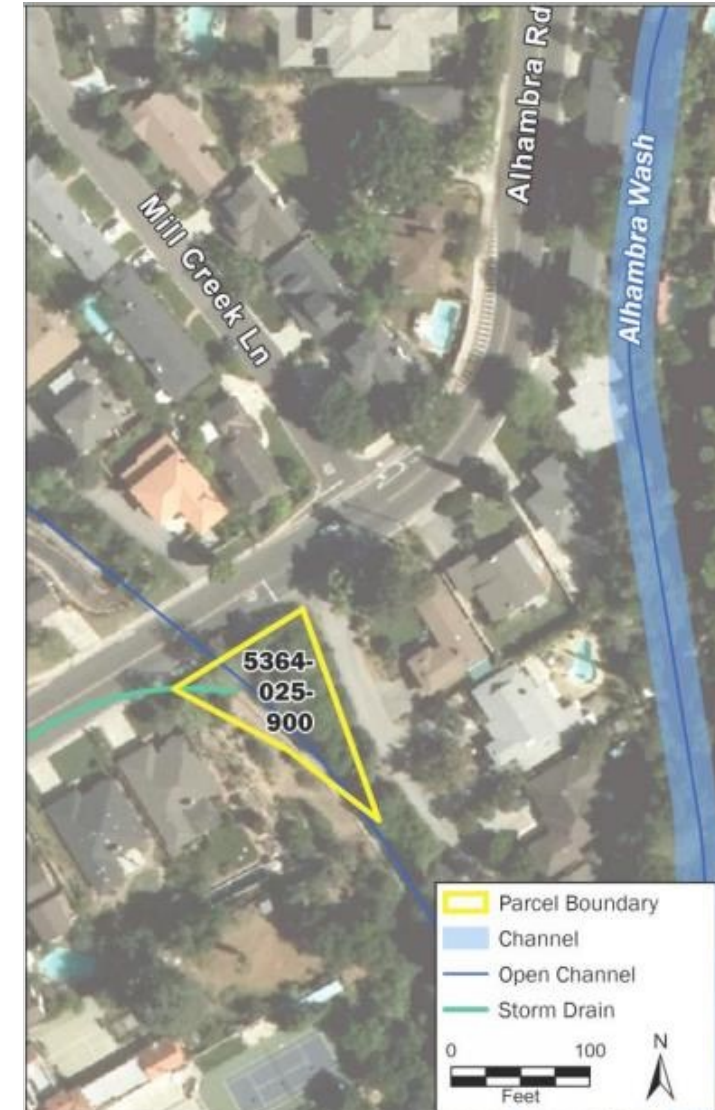


WEIGHTED FEASIBILITY OF CHANNEL REACH

Army Corps Channel	Community Score	Circulation Score	Environment Score	Synergy Score	Feasibility Score
Yes	1.3	1.2	0.15	0.3	10.2

Potential Project Elements

- Park/greenspace construction
- Neighborhood access to Channel ROW



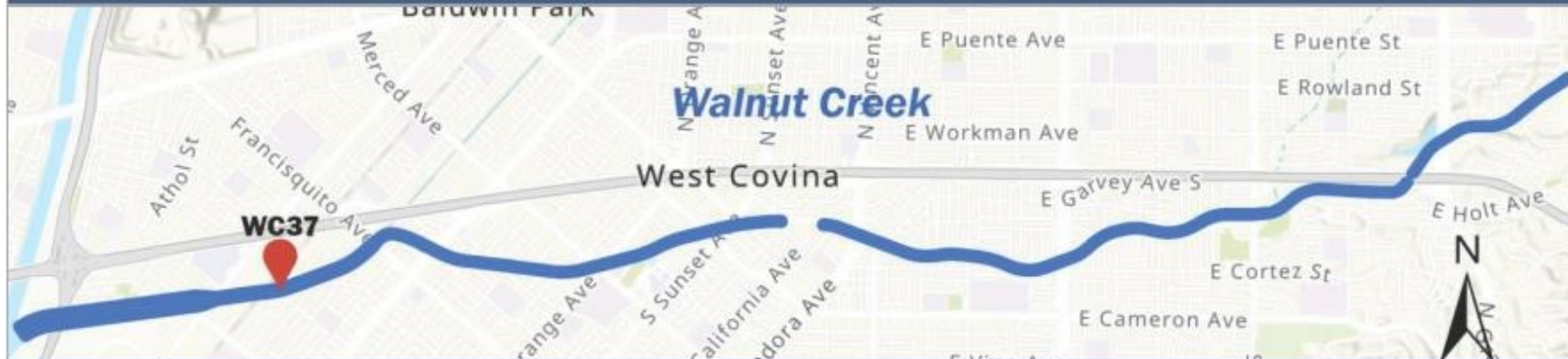
Project Component Example – Walnut Creek Park

Stormwater BMP, West of Syhre Park

Channel: Walnut Creek

Reach: Walnut Creek 1

Project ID: WC37



WEIGHTED FEASIBILITY OF CHANNEL REACH

Army Corps Channel	Community Score	Circulation Score	Environment Score	Synergy Score	Feasibility Score
No	1.2	3.05	0.5	1.1	20.6

Potential Project Elements

- Park/greenspace construction
- Neighborhood access to Channel ROW



4

Discussion



Breakout Rooms

This screenshot shows the Zoom desktop application interface during a breakout session. The main video area displays the text "MIG - PPEC5". A yellow box highlights the "Breakout Rooms - In Progress (00:29:38)" panel on the right, which lists three rooms: "Room 1 - West", "Room 2 - Central", and "Room 3 - South", each with a "Join" button. Another yellow box highlights the "Breakout Rooms" icon in the bottom toolbar. A third yellow box highlights the "Join a breakout room" button in the bottom toolbar.

Breakout Rooms - In Progress (00:29:38)

- Room 1 - West 0 Join
- Room 2 - Central 0 Join
- Room 3 - South 0 Join

MIG - PPEC5

Join a breakout room

Unmute Start Video Participants Chat Share Screen Live Transcript Breakout Rooms Reactions Leave

This screenshot shows the Zoom mobile application interface. The top bar includes a "Leave" button. A yellow box highlights the "Join Breakout Room" icon in the top left. Another yellow box highlights the "Join Breakout Room" screen, which shows "Room 1" selected with a checkmark and a "Join" button. The bottom toolbar shows icons for Unmute, Start Video, Share Content, Participants (2), and More.

Zoom Leave

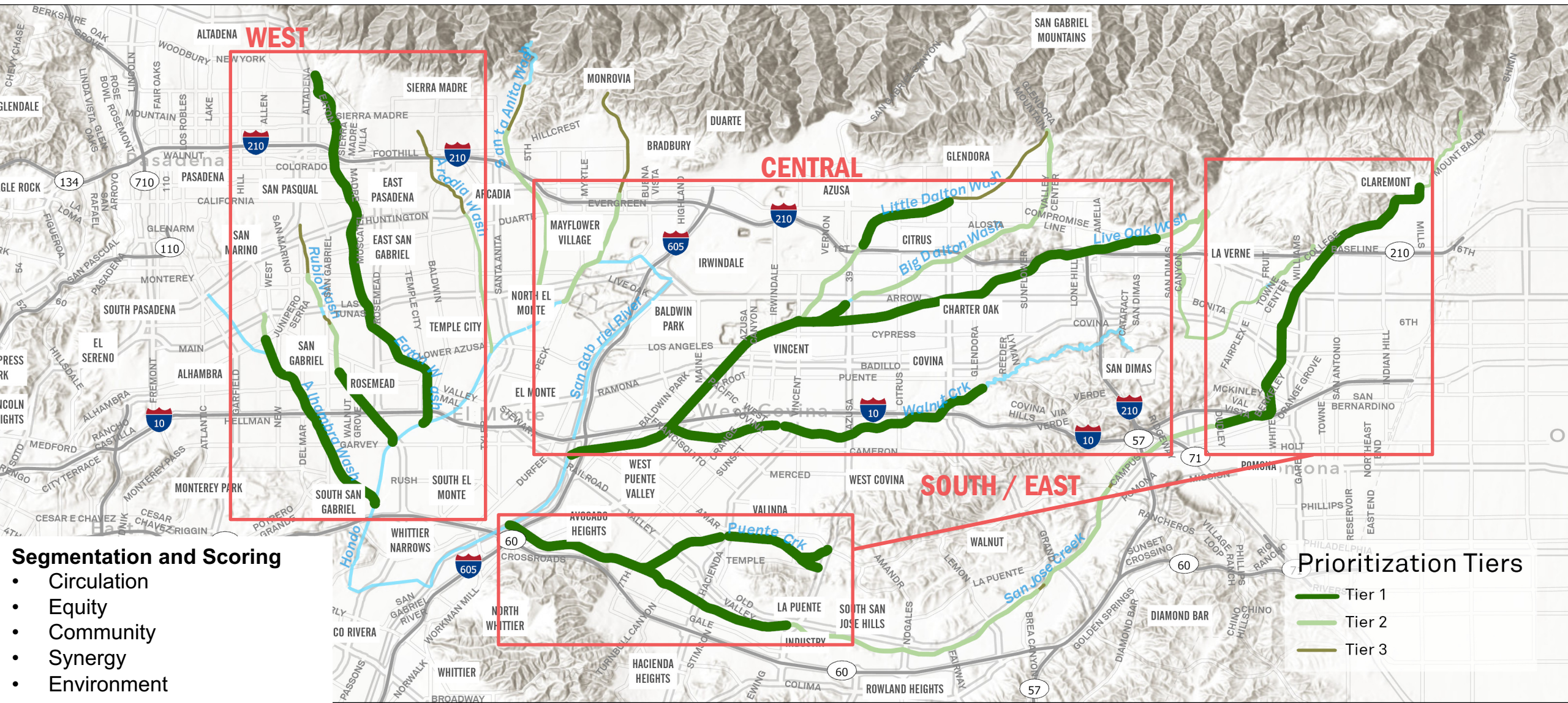
Join Breakout Room

Join Breakout Room

Room 1 ✓

Join

Unmute Start Video Share Content Participants 2 More



**How would the
on-street
alignment
impact your use
of the
greenway?**

Proposed Bike Path Alignments

**What would
you like to see
included as
potential parks
and amenities?**

Project Components and
Potential Park Opportunities

5

Next Steps



Next Steps for the Plan

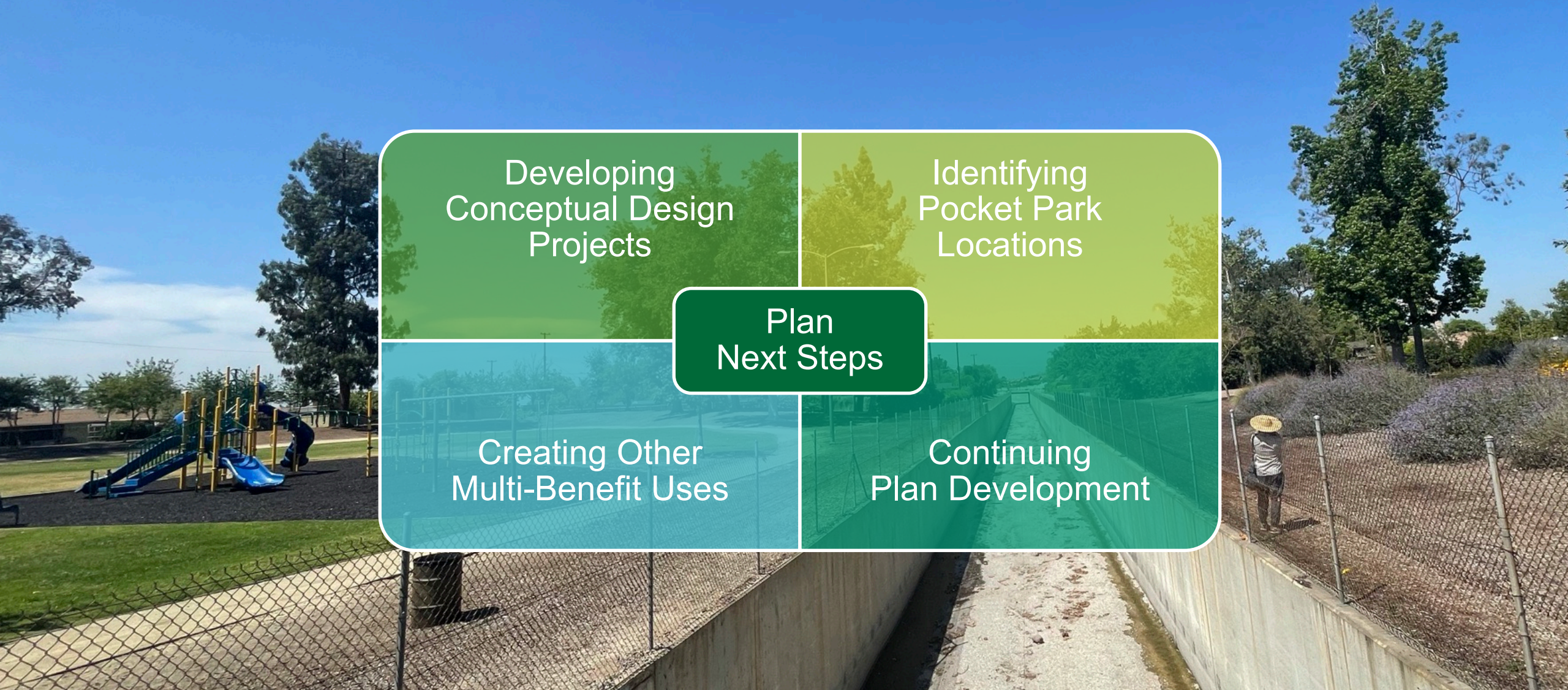
Developing
Conceptual Design
Projects

Identifying
Pocket Park
Locations

Plan
Next Steps

Creating Other
Multi-Benefit Uses

Continuing
Plan Development



Next Steps for the Community



Next Round of
Community
Workshops
Spring 2022

Look for our
Pop-up Events
throughout
San Gabriel Valley

Community
Engagement
Sessions
with WCA



THANK YOU!

Additional Questions or Comments:

Email: sgvgreenway@pw.lacounty.gov

Contact: Julian Juarez at (626) 458-7149

Website: www.sgvgreenway.org



Please remember to take the Map-Based Survey!

<https://bit.ly/sgv-survey>